



QuickDraw® Steam Semi-instantaneous Hot Water Generator with NICKELSHIELD® Nickel-Plated Pressure Vessel

Model Number ▼	Gallon per Minute Recovery and lb/h Steam Flow (15 psi steam to the valve)						Dimensions in Inches					Approximate Shipping Weight (lbs.)
	40 - 120°F		40 - 140°F		40 - 160°F		A Cold Inlet Flanged	B Hot Outlet NPT	C	E * Steam Inlet @15 psig	F ** Condensate Piping Connection	
	gpm	lb/hr	gpm	lb/hr	gpm	lb/hr						

Single-wall

10 N 5A-IS	10	420	8	390	6	350	3	2	83	1	1-1/2	660
20 N 5A-IS	20	840	15	770	12	700	3	2	83	1-1/2	2	680
40 N 5A-IS	40	1680	30	1540	23	1390	3	2	83	2	3	730
60 N 5A-IS	60	2510	45	2300	34	2080	3	2	95	2-1/2	3	880
80 N 5A-IS	80	3350	59	3070	45	2770	3	3	83	2-1/2	4	840
100 N 5A-IS	100	4180	74	3840	56	3460	3	3	95	4	4	1180
125 N 5A-IS	125	5230	92	4800	69	4320	3	3	95	4	4	1490
150 N 5A-IS	150	6270	111	5750	83	5190	3	3	100	6	4	1520

Double-wall

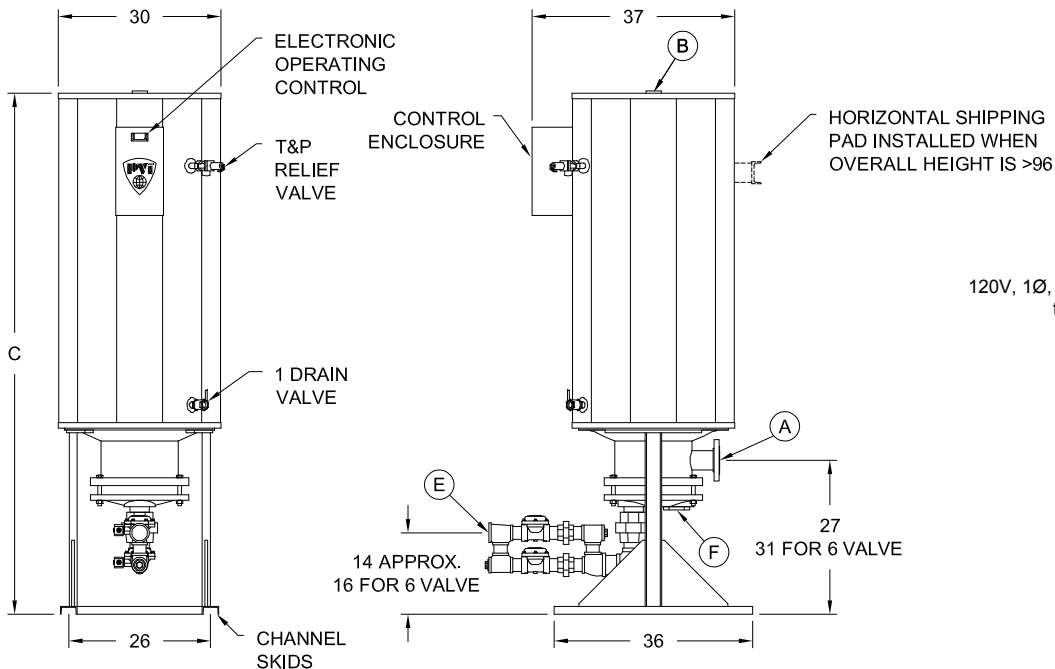
10 N 5A-ISD	10	420	8	390	6	350	3	2	95	1	1-1/2	760
20 N 5A-ISD	20	840	15	770	12	700	3	2	95	1-1/2	2	820
40 N 5A-ISD	40	1680	30	1540	23	1390	3	2	95	2	3	920
60 N 5A-ISD	60	2510	45	2300	34	2080	3	2	83	2-1/2	3	960
80 N 5A-ISD	80	3350	59	3070	45	2770	3	3	95	2-1/2	4	1090
100 N 5A-ISD	100	4180	74	3840	56	3460	3	3	95	4	4	1450
125 N 5A-ISD	125	5230	92	4800	69	4320	3	3	95	4	4	1730
150 N 5A-ISD	150	6270	111	5750	83	5190	3	3	100	6	6	1840

* Steam inlet is NPT through 2-1/2 inches and ANSI 150# flange at 4 and 6 inches. Steam valve configuration vary with input.

** This dimension is the NPT piping connection at the bonnet and requires plumbing to a float and thermostatic trap.

For recoveries, steam flows, valve size, and F&T trap size under differing steam pressures, refer to forms PV 6614 through PV 6617.

For standard and optional equipment, see form PV6608.



Electrical requirements:
120V, 1Ø, 60 Hz., 20 amps maximum,
to a single point connection.

PVI RESERVES THE RIGHT TO CHANGE THE DESIGN AND SPECIFICATION WITHOUT NOTICE.