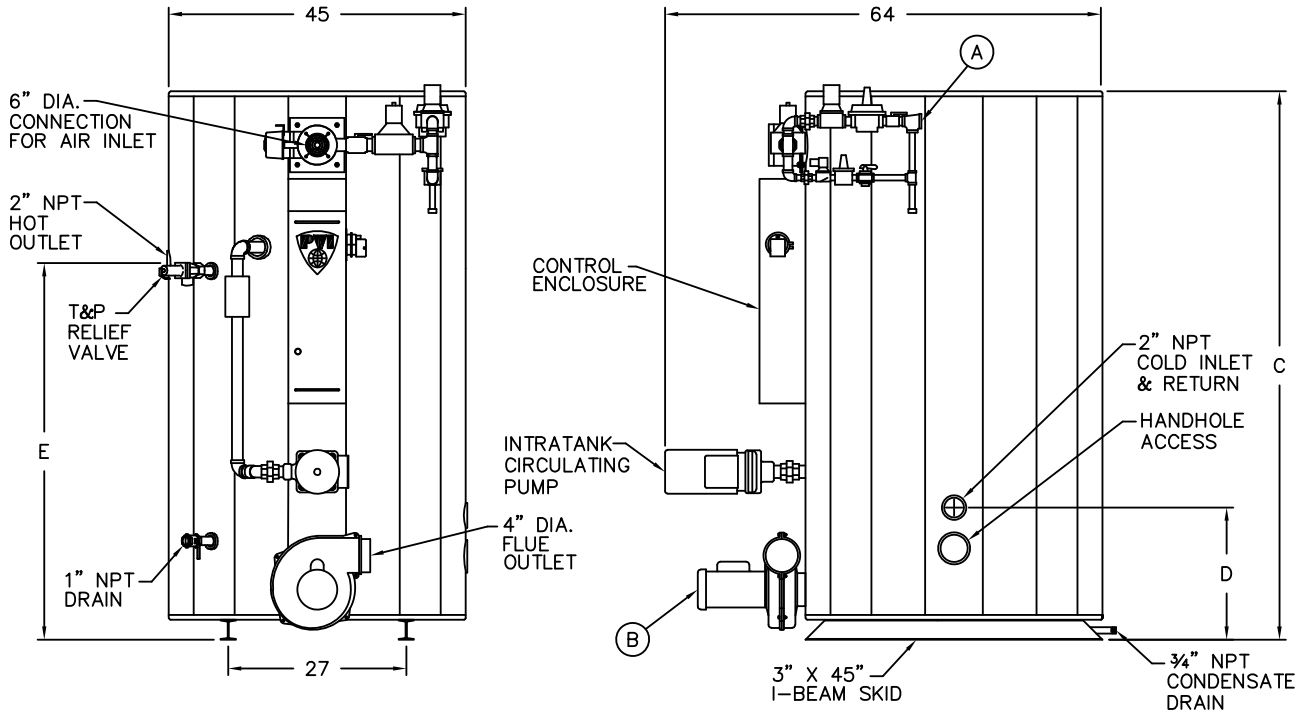


POWER VT® • PACKAGED GAS WATER HEATER
NICKELSHIELD® NICKEL-PLATED STORAGE TANK
250 GALLON TANK SERIES

MODEL NUMBER	560 N 250A-PV	800 N 250A-PV	1060 N 250A-PV	1400 N 250A-PV
GPH Recovery Rate at 40°F to 120°F	560	800	1060	1400
GPH Recovery Rate at 40°F to 140°F	450	640	850	1130
Input Btu/h	399,000	565,000	750,000	1,000,000
Nominal Gallons Storage	250	250	250	250
A Gas Inlet - NPT	3/4"	1"	1"	1"
Minimum Inlet Flow Gas Pressure – " W.C.	4-1/2	4-1/2	4-1/2	4-1/2
B Induced-Draft Blower Motor Horsepower	1/3	1/3	1/2	3/4
C Overall Height	79"	79"	81"	81"
D Floor to Cold Inlet	18"	18"	20"	20"
E Floor to Hot Outlet	55"	55"	57"	57"
Approximate Shipping Weight - lbs	1950	2090	2190	2400

Recoveries based on 94% thermal efficiency. ASHRAE 90.1 compliant.
 Dimensions are in inches unless otherwise noted.
 For standard and optional equipment, see form # PV 6147.



STANDARD GAS PRESSURE REQUIREMENTS:
 SEE TABLE FOR MINIMUM PRESSURE BY MODEL NUMBER.
 MAXIMUM STATIC INLET GAS PRESSURE : 14" W.C.
 FOR GAS PRESSURES OUTSIDE OF THIS RANGE,
 CONTACT YOUR PVI REPRESENTATIVE.

STANDARD ELECTRICAL REQUIREMENTS:
CONTROL VOLTAGE: 120V, 1Ø, 60 HZ., 2 AMPS
INDUCED-DRAFT BLOWER: 1/3 HP, 120V, 1Ø, 60 HZ., 6 AMPS
 1/2 HP, 120V, 1Ø, 60 HZ., 8 AMPS
 3/4 HP, 120V, 1Ø, 60 HZ., 11 AMPS
INTRATANK CIRCULATOR: 1/3 HP, 120V, 1Ø, 60 HZ., 7 AMPS
 (CIRCULATOR OPERATES ONLY WHEN BURNER IS FIRING)

VENTING REQUIREMENTS:
 CATEGORY IV - POSITIVE PRESSURE, CONDENSING.
 UL LISTED FOR CPVC PLASTIC PIPE ON EXHAUST.
 STAINLESS STEEL IS ALSO ACCEPTABLE.
 INLET AIR ON ALL INPUTS RATED FOR 120 EQUIV FEET THRU 6"
399 TO 750 MBH: EXHAUST RATED FOR 100 EQUIV FEET THRU 4"
 EXHAUST RATED FOR 500 EQUIV FEET THRU 6"
1000 MBH: EXHAUST RATED FOR 50 EQUIV FEET THRU 4"
 EXHAUST RATED FOR 390 EQUIV FEET THRU 6"
 SEE INSTALLATION MANUAL FOR DETAILS.

PVI RESERVES THE RIGHT TO CHANGE THE DESIGN AND SPECIFICATION WITHOUT NOTICE.



PVI INDUSTRIES, LLC
 FORT WORTH, TEXAS 76111
 (800) 784-8326 • www.pvi.com