

MAAX SUBMITTAL SPECIFICATIONS

Vivez l'expérience

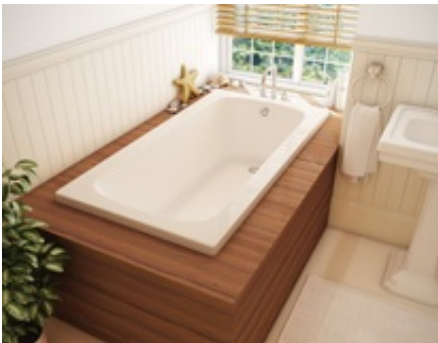
MAAX[®]

Enjoy the experience

CS 32

MODEL NUMBER 103588

DIMENSIONS: 60" x 32" x 20" Acrylic



STANDARD FEATURES

- Compact design with roomy interior. Available in tub only and an array of True Whirlpool Systems, Aeroeffect Air Systems and Combination True Whirlpool and Aeroeffect Air Systems. Options include cable-operated waste and overflow, grab bars, chromotherapy and pillow. Drop-in, undermount or alcove installation.

OPTIONS

- None

UNIQUE FEATURES

- None

SYSTEMS

- None

DOOR SELECTION

Combine with MAAX's complete shower door offering visit www.maax.com

Project :
Contractor :
MAAX Representative : Tel :
Date :

CERTIFICATIONS

Maax products adhere to one or more of the following certifications:

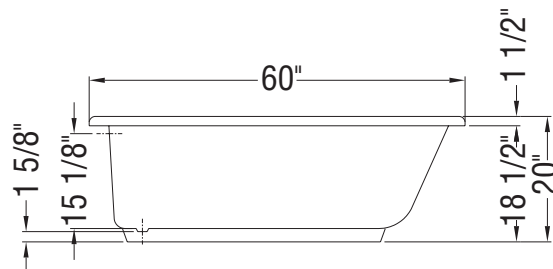
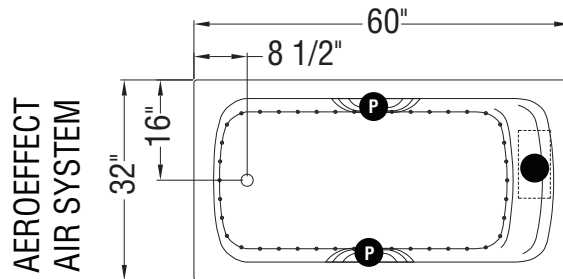
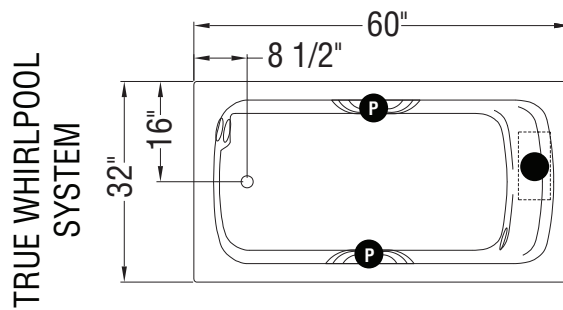


MAAX SUBMITTAL SPECIFICATIONS

CS 32

MODEL NUMBER 103588

TECHNICAL DRAWINGS



- : Indicates pump or blower positioning
- P : Indicates optional grab bars positioning
- (○) : Indicates True Whirlpool jets positioning
- (●) : Indicates Aeroeffect airjets positioning