

VURSA kd SERIES
TUB/SHOWER

Oasis®

TS3P-6030R ABF / 5BAR shown



MULTI-PIECE MODEL

TS3P-6030 (3-piece)

Rough-In Dimensions

60" wide x 31-1/4" deep x 77-1/2" high (w/ 16-inch apron)

Finished Dimensions

60" wide x 30" deep x 76-1/4" high (w/ 16-inch apron)

Unit Features



- Three - Piece Fiberglass Composite Construction
- Sanitary Grade Polyester Gelcoat Surface
- Front-Side Installation With Minimal Sealant Requirements
- 2" Dia. End Drain
- 2-1/2" Dia. Overflow
- Apron Drip Ledge Minimizes Water Migration
- Corner Accessory Ledge
- Generous, Multi-Level Back Wall Shelving
- Wall Design Accommodates Grab Bar Applications
- Textured Floor Pattern
- 1/2-inch Balsa Wood Core Floor Structure

Special Notes

- Optional ABF Model (provides 3-inches of drain clearance)
- UL Listed Whirlpool System Available
- 'QwikClic' Technology (Patents Pending)
- Factory Applied Reinforcement Packages Available (see following pages)
- Factory Applied Bar & Seat Packages Available (see following pages)

Order No.: TS3P-6030R (RH drain / 16" apron)
 TS3P-6030L (LH drain / 16" apron)

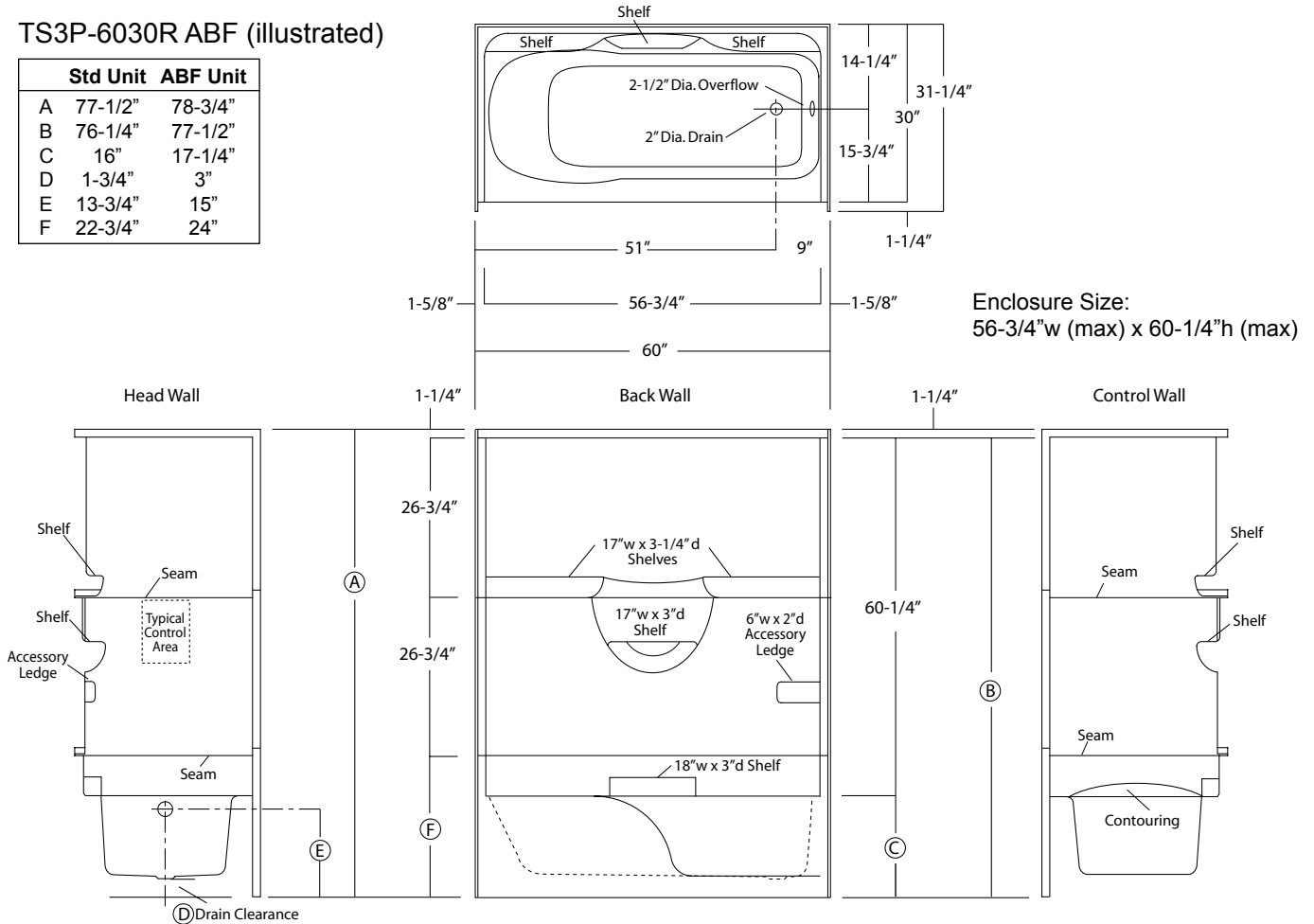
Order No.: TS3P-6030R ABF (RH drain / 17-1/4" apron)
 TS3P-6030L ABF (LH drain / 17-1/4" apron)

60" x 30", 3-piece gelcoated fiberglass tub/shower with 'QuikClic', front side installation, multi-level back wall shelves, corner accessory ledge, contoured neck rest, and drain on end indicated.

NOTE: Base unit provides 1-3/4" drain clearance, ABF unit provides 3" drain clearance.

TS3P-6030R ABF (illustrated)

	Std Unit	ABF Unit
A	77-1/2"	78-3/4"
B	76-1/4"	77-1/2"
C	16"	17-1/4"
D	1-3/4"	3"
E	13-3/4"	15"
F	22-3/4"	24"



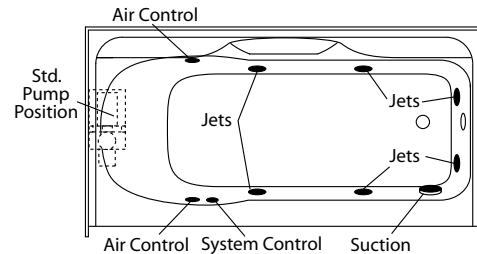
Package Order No.: 6P (whirlpool system)

Package includes: 6, adjustable jets, twin air injection controls, pneumatic on/off control, and 5.5 amp pump/motor.

NOTE: 6P system available with various reinforcement and component packages.

System: In-Line Heater (factory installed) (order code ILH)
 Options: Ozone Generator (factory installed) (order code OZG)

Removable access panel currently not available for this model.

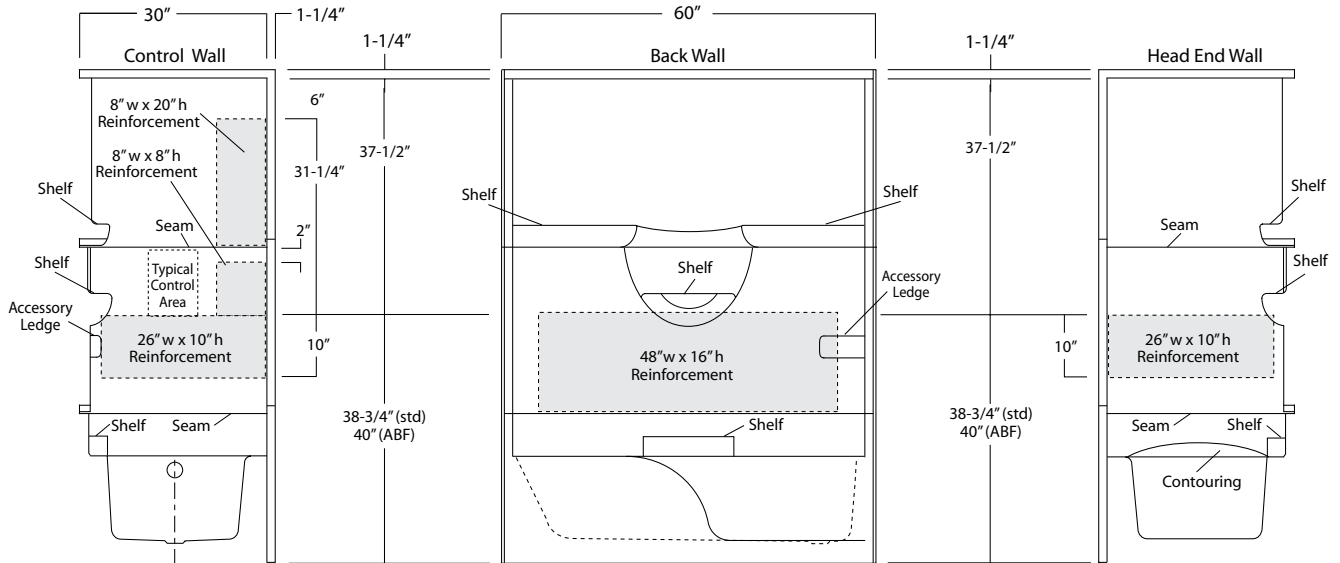


Sump Dimensions: 51" long x 20" wide x 13-1/4" deep
 Sump Capacity: 40 gal. (unoccupied - to overflow)
 Whirlpool Operating: 34 gal.

Package Order No.: FH (Fair Housing wall reinforcement)

Package Includes: Factory applied, HUD-FHA compliant (Fair Housing), structurally reinforced wall areas (as shown) for the independent field application of bars.

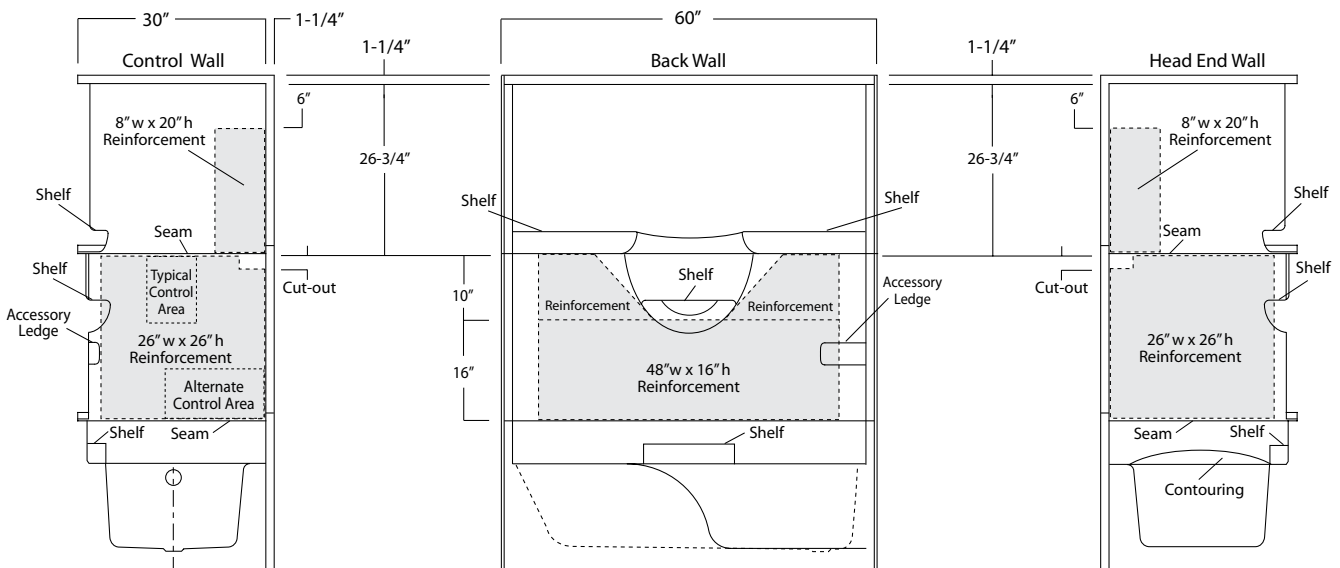
NOTE: Factory installed stainless steel shower curtain rod available.



Package Order No.: 3SM (3-side, mid-level wall reinforcement)

Package Includes: Factory applied, 3-side, mid-level, structurally reinforced wall areas (as shown), exceeding 'Fair Housing' (HUD/FHA) requirements.

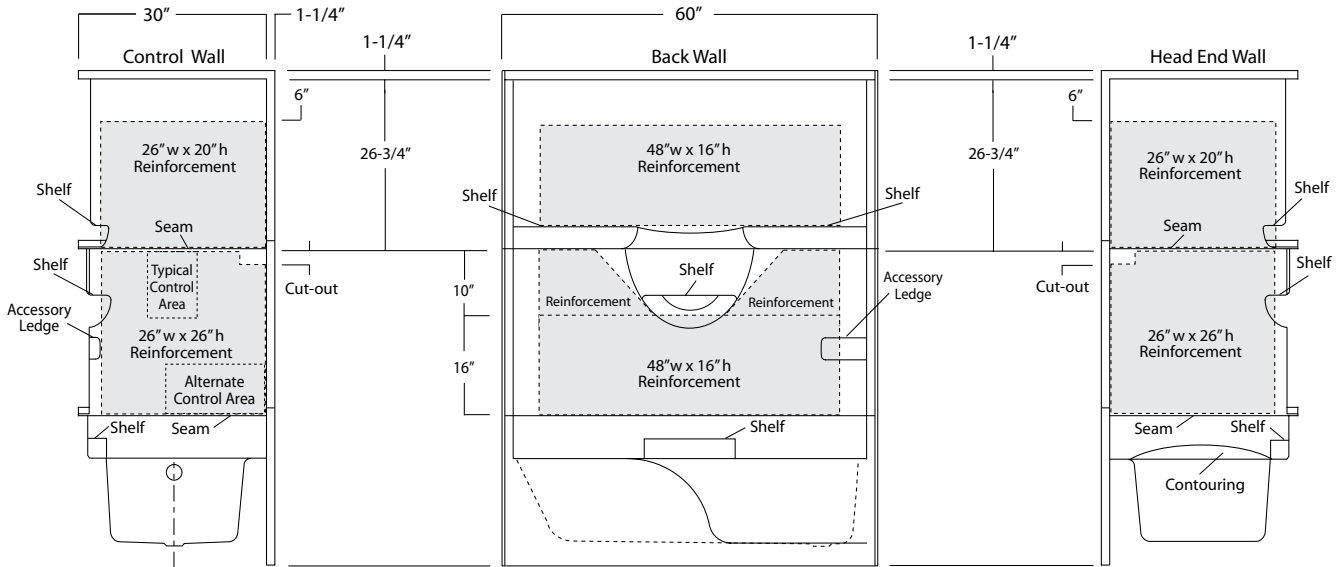
NOTE: Factory installed stainless steel shower curtain rod and bar packages available using 3SM reinforcement.



Package Order No.: 3SF (3-side, full-wall reinforcement)

Package Includes: Factory applied, 3-side, full-wrap, structurally reinforced wall areas (as shown), exceeding 'Fair Housing' (HUD/FHA) requirements, for the independent field application of bars.

NOTE: Factory installed stainless steel shower curtain rod and bar packages available using 3SF reinforcement.

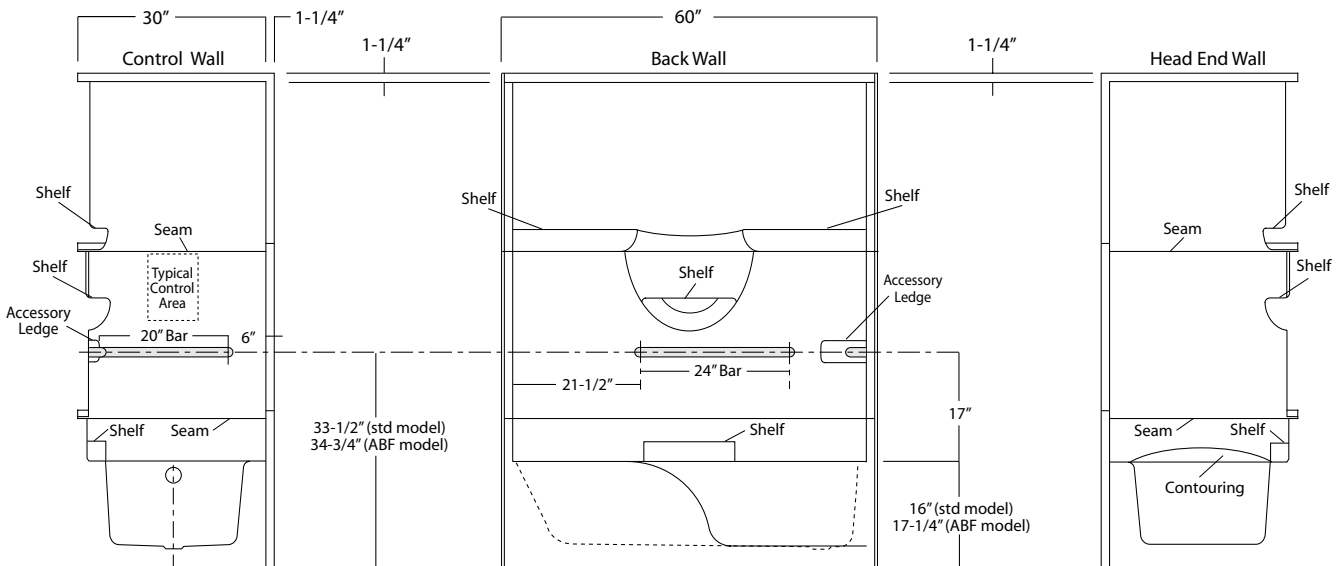


- Package Order No.:** BP1-60 (1-1/2" dia., stainless steel, 2-bar only package)
Upgrade Package No.: BP1-60 WHT (1-1/4" dia., white powder coat, 2-bar only package)
 BP1-60 OFW (1-1/4" dia., off-white powder coat, 2-bar only package)
 BP1-60 SNK (1-1/4" dia., satin nickel, 2-bar only package)

Package Includes: Factory installed, 1-1/2" dia. stainless steel, 2-bar package with basic reinforcement for components (as shown).

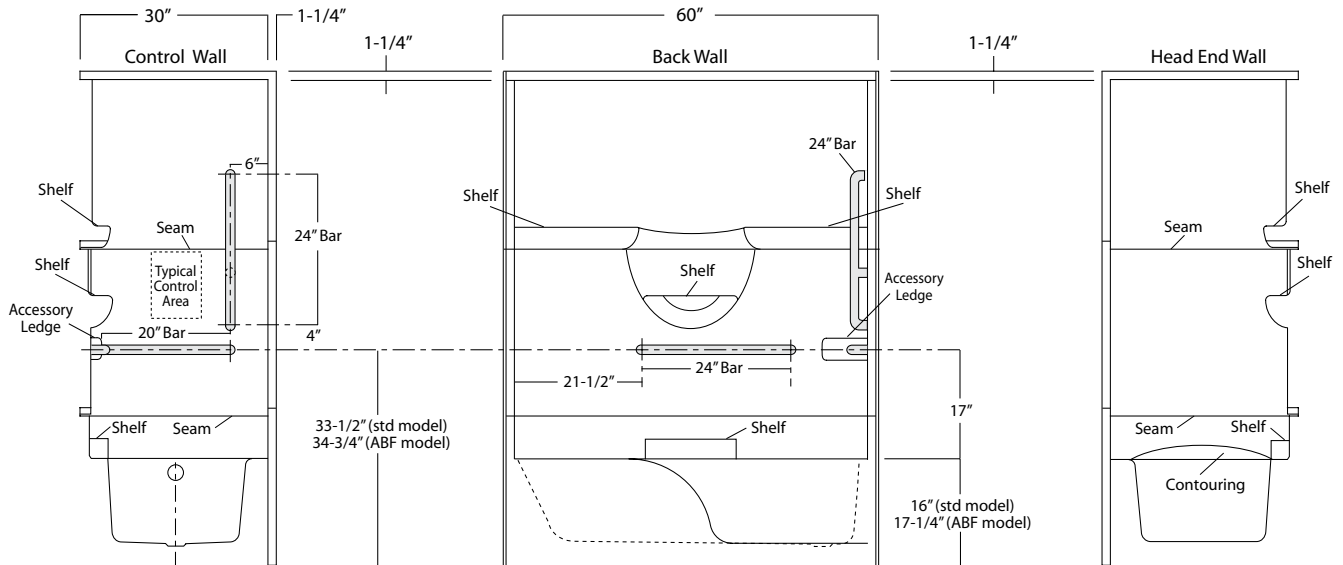
NOTE: Enhanced reinforcement available, see 3SM & 3SF packages.

NOTE: Factory installed stainless steel shower curtain rod available.



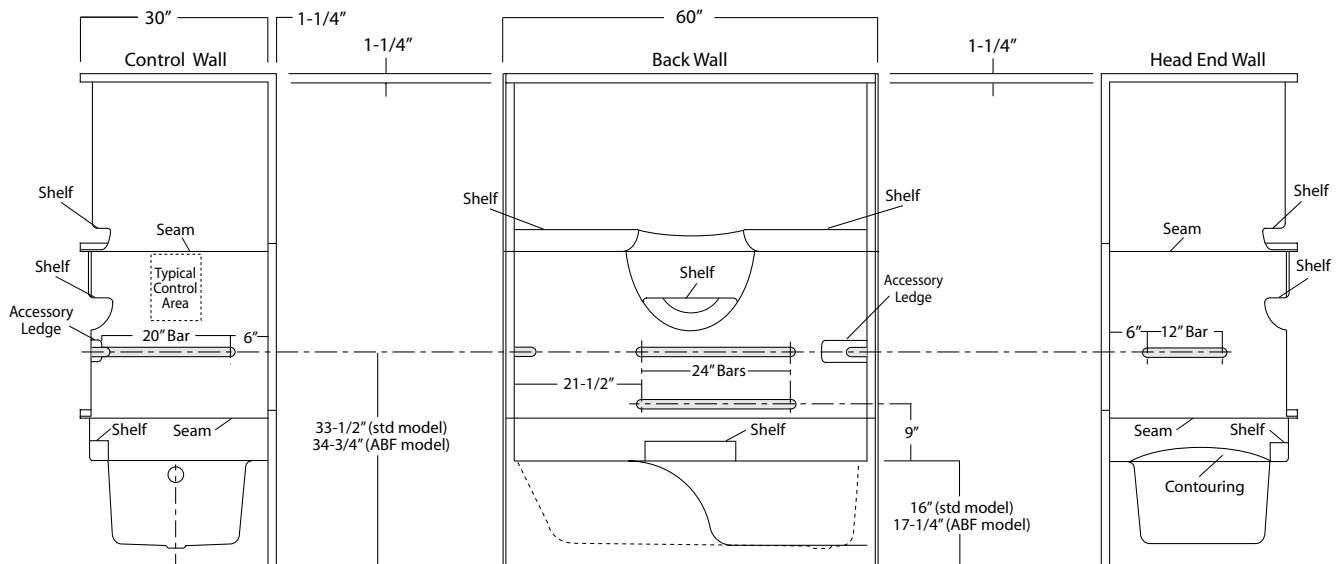
Package Order No.: BP2-60 (3-bar only package)
Upgrade Package No.: BP2-60 WHT (1-1/4" dia., white powder coat, 3-bar only package)
 BP2-60 OFW (1-1/4" dia., off-white powder coat, 3-bar only package)
 BP2-60 SNK (1-1/4" dia., satin nickel, 3-bar only package)

Package Includes: Factory installed, 1-1/2" dia. stainless steel, 3-bar package with basic reinforcement for components (as shown).
 NOTE: Enhanced reinforcement available, see 3SM & 3SF packages.
 NOTE: Factory installed stainless steel shower curtain rod available.



Package Order No.: 4BAR (4-bar only package)
Upgrade Package No.: 4BAR WHT (1-1/4" dia., white powder coat, 4-bar only package)
 4BAR OFW (1-1/4" dia., off-white powder coat, 4-bar only package)
 4BAR SNK (1-1/4" dia., satin nickel, 4-bar only package)

Package Includes: Factory installed, 1-1/2" dia. stainless steel, 4-bar package with basic reinforcement for components (as shown) (replicates ADA10 bar configuration less seat and shower rod).
 NOTE: Enhanced reinforcement available, see 3SM & 3SF packages.
 NOTE: Factory installed stainless steel shower curtain rod available.

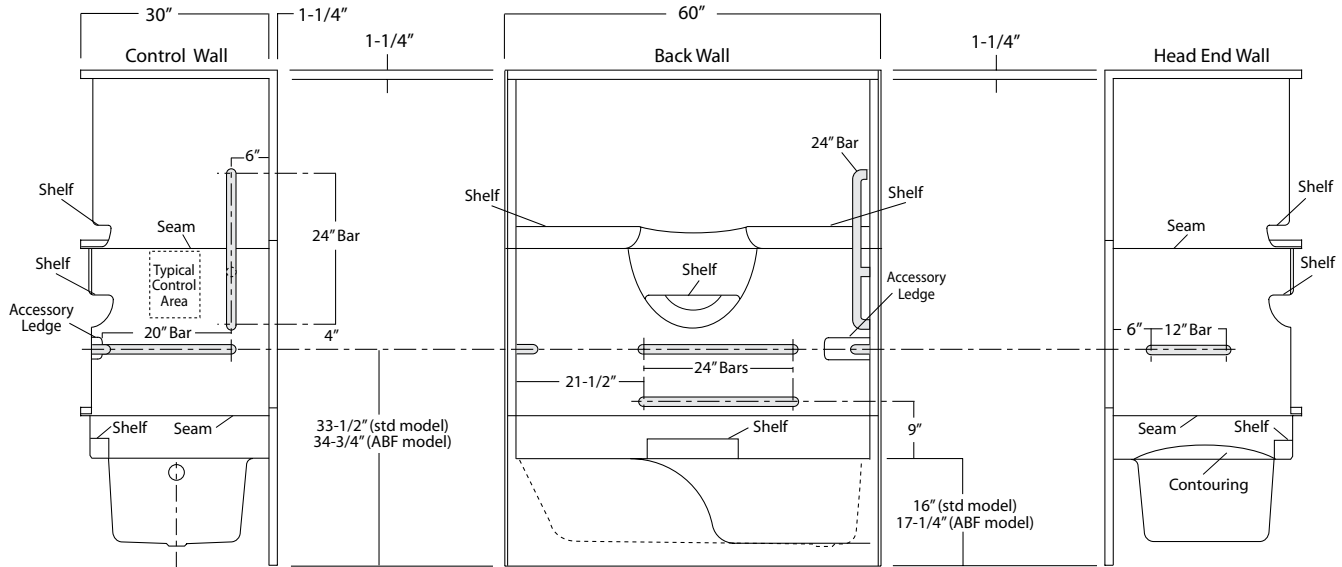


Package Order No.: 5BAR (5-bar only package)
Upgrade Package No.: 5BAR WHT (1-1/4" dia., white powder coat, 5-bar only package)
5BAR OFW (1-1/4" dia., off-white powder coat, 5-bar only package)
5BAR SNK (1-1/4" dia., satin nickel, 5-bar only package)

Package Includes: Factory installed, 1-1/2" dia. stainless steel, 5-bar package with basic reinforcement for components (as shown) (replicates ANS09 bar configuration less seat and shower rod).

NOTE: Enhanced reinforcement available, see 3SM & 3SF packages.

NOTE: Factory installed stainless steel shower curtain rod available.



Package Order No.: ADA10-FLD (folding seat - 2010 ADA Standards compliant pkg) (replaces ADA94)
ADA10-REM (removable seat - 2010 ADA Standards compliant pkg)

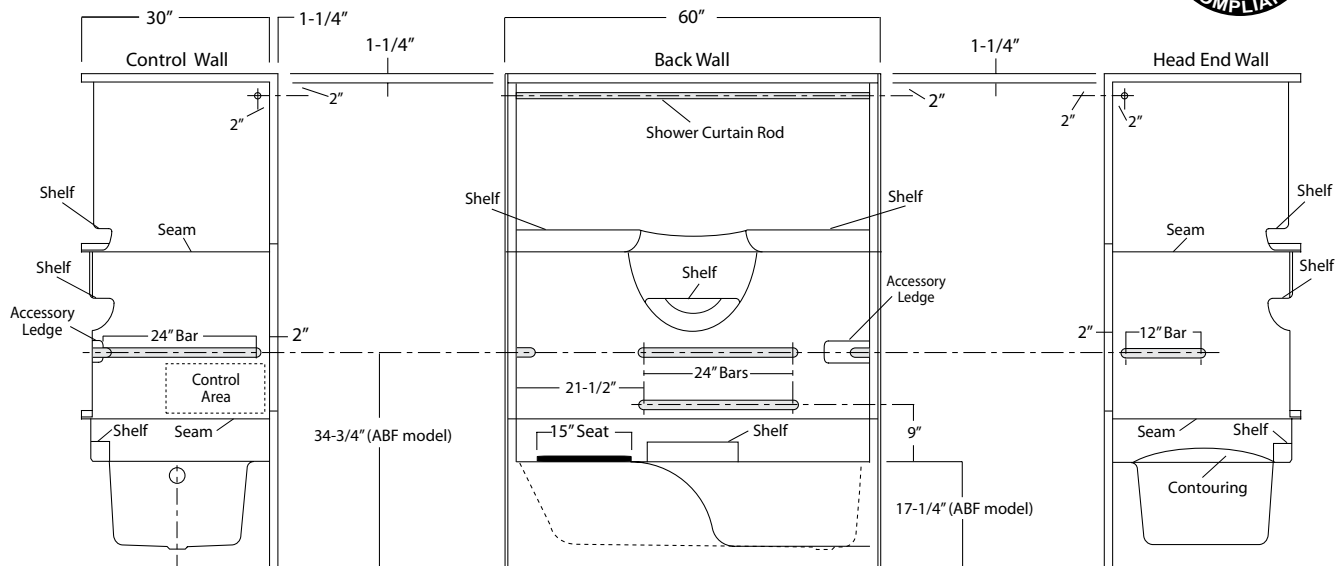
Package Includes: Factory installed seat, 1-1/2" dia. stainless steel bars and shower curtain rod in compliance with 2004 ADA requirements.

NOTE: ADA10 is a 4-bar package. Check installation site regulations for compliance requirements.

NOTE: Enhanced reinforcement available, see 3SM & 3SF packages.

NOTE: Shower curtain rod may be deleted upon request without affecting compliance.

NOTE: Use of ABF unit is required for seat height compliance.



Package Order No.: ANS09-FLD (folding seat - ICC ANSI compliant pkg) (replaces ADA03)
 ANS09-REM (removable seat - ICC ANSI compliant pkg)

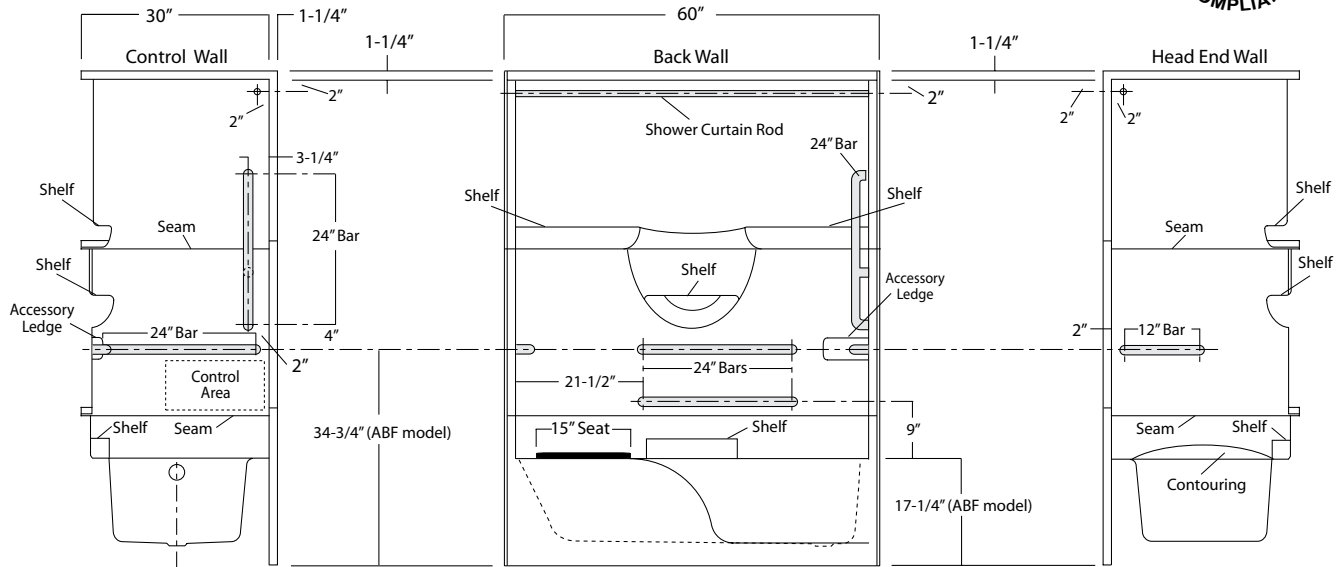
Package Includes: Factory installed seat, 1-1/2" dia. stainless steel bars and shower curtain rod in compliance with ICC ANSI-A117.1-2009 requirements.

NOTE: ANS09 is a 5-bar package. Check installation site regulations for compliance requirements.

NOTE: Enhanced reinforcement available, see 3SM & 3SF packages.

NOTE: Shower curtain rod may be deleted upon request without affecting compliance.

NOTE: Use of ABF unit is required for seat height compliance.



Photographic images may include optional components and appear different than actual product.
 Dimensions shown are maximum. Due to the nature of the materials involved, actual unit dimensions can vary (tolerances: +0 / -3/8 inch).
 Oasis reserves the right to modify or discontinue product and/or associated equipment without prior written or verbal notification or obligation.