

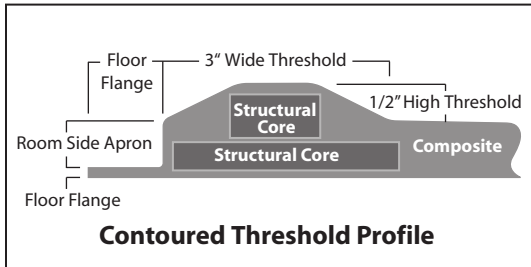
BARRIER-FREE SHOWER

Oasis



ADA Alternate Roll-In Shower Stall

Equipped for compliance with ANSI-A117.1 standards (through current edition).



ADA COMPLIANT PACKAGE

SHFW-6235 / ADA / TL-RS (Right Seat)

ADA COMPLIANT PACKAGE

SHFW-6235 / ADA / TL-LS (Left Seat)

Rough-In Dimensions

62" wide x 36-1/4" deep x 76-3/4" high

Finished Dimensions

62" wide x 35" deep x 75-1/2" high

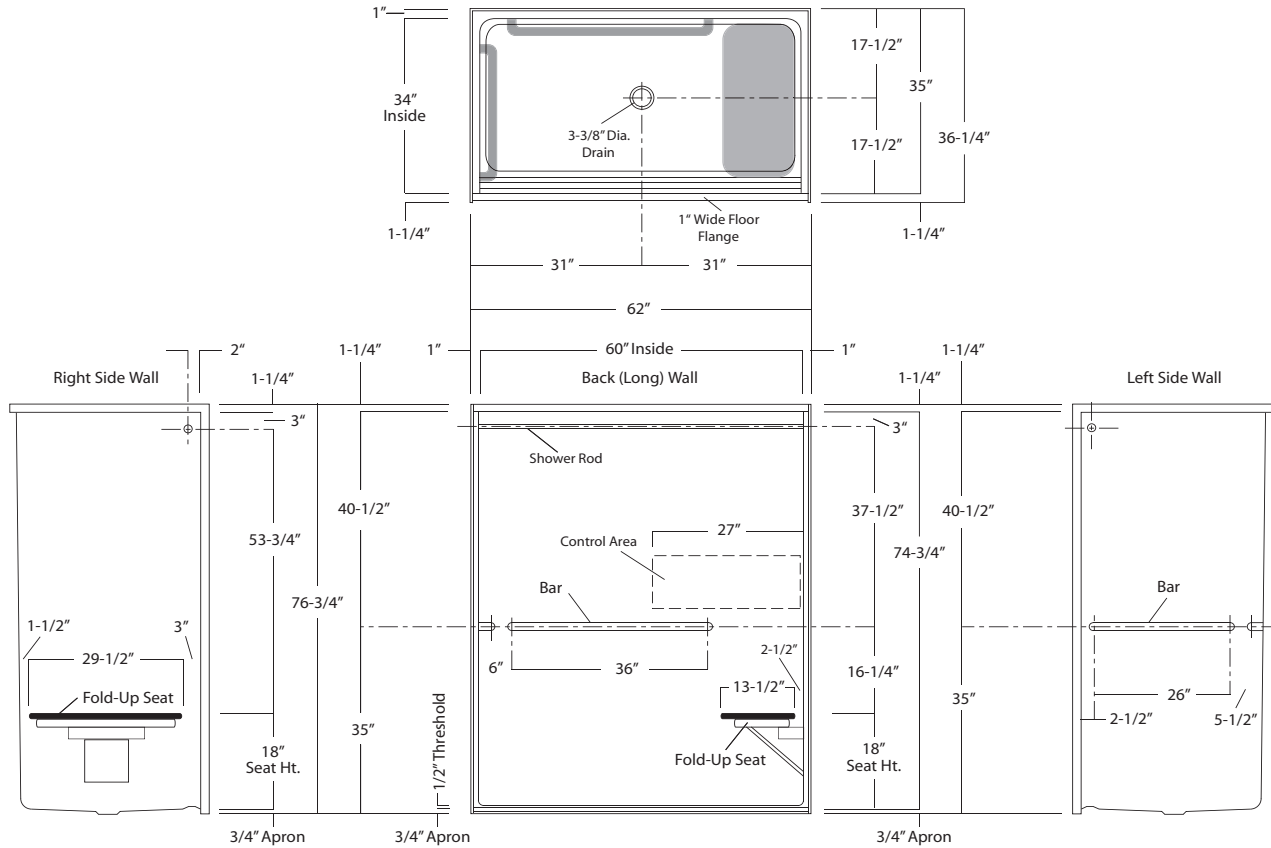
Unit Features

- One - Piece Fiberglass Composite Construction
- Sanitary Grade Polyester Gelcoat Surface
- 3-3/8" Dia. Center Drain (see reverse side for location)
- 1/2" Threshold To Aid In Keeping Water Within Confines of Unit
- Contoured Threshold To Aid Entry And Exit
- 1" Floor Flange To Secure Unit Along Threshold
- Textured Floor Pattern
- Balsa Wood Core Floor Structure

Special Notes

- Factory Applied, Composite Encased Reinforcement
- Factory Installed, ADA Compliant Alternate Roll-In Bar & Seat Package
- Factory Installed, 1" Dia. Stainless Steel Shower Rod
- Concealed, Tamper-Proof Bar, & Rod Attachments
- Package Complies with ANSI A117.1 Standard (ADA Compliance)

SHFW-6235 / ADA-TL
(right seat illustrated)



This package is configured for use with a shower curtain.
This package incorporates flangless, brushed stainless steel bars with concealed tamper-proof connections.

Alternate Roll-In Shower Package

Order No.: SHFW-6235 / ADA / TL-RS (Right seat -
ADA Compliant Alternate Roll-In Pkg)
SHFW-6235 / ADA / TL-LS (Left seat -
ADA Compliant Alternate Roll-In Pkg)

62" x 35", One-piece gelcoated fiberglass shower stall with 1/2" threshold, structurally reinforced wall areas, and factory installed ANSI-A117.1 compliant (ADA) alternate roll-in bar and folding seat package.

Package includes

- ◆ (2), 1-1/2" dia. stainless steel, horizontally mounted bars
- ◆ (1), Rectangular, folding (phenolic) seat with stainless steel frame and white laminate top
- ◆ (1), 1" dia. stainless steel shower rod

Dimensions shown are maximum. Due to the nature of the materials involved, actual unit dimensions can vary (tolerances: +0 / -3/8 inch).