

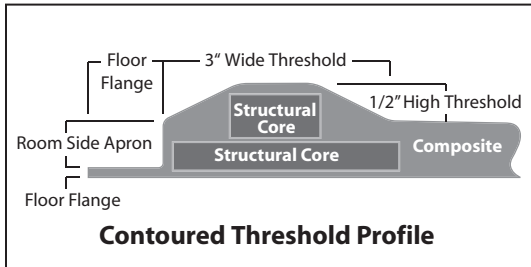
# BARRIER-FREE SHOWER

**Oasis**



## ADA Transfer Shower Stall

Equipped for compliance with ANSI-A117.1-2003 edition (vertical bar requirements).



ADA COMPLIANT PACKAGE

**SHFW-3837 / ADA03-RS (Right Seat)**

ADA COMPLIANT PACKAGE

**SHFW-3837 / ADA03-LS (Left Seat)**

Rough-In Dimensions

38" wide x 38-1/4" deep x 76" high

Finished Dimensions

38" wide x 37" deep x 74-3/4" high

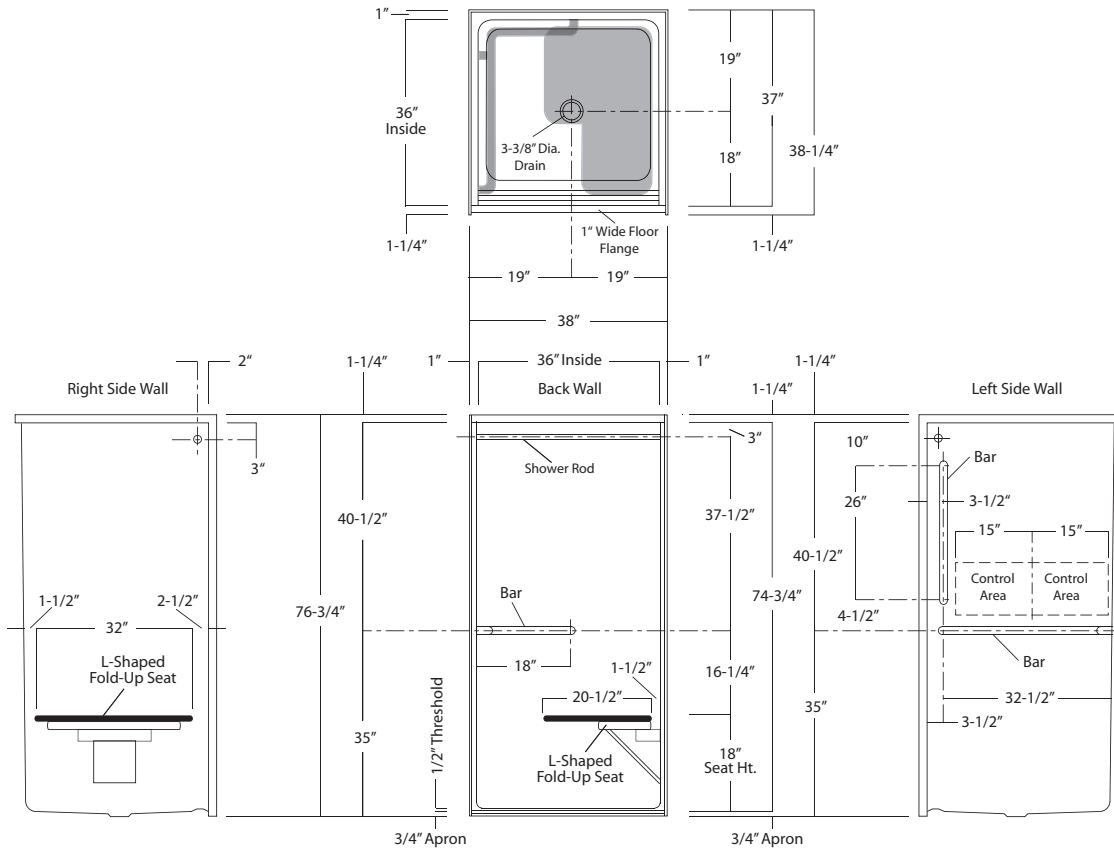
Unit Features

- One - Piece Fiberglass Composite Construction
- Sanitary Grade Polyester Gelcoat Surface
- 3-3/8" Dia. Center Drain (see reverse side for location)
- 1/2" Threshold To Aid In Keeping Water Within Confines of Unit
- 1" Floor Flange To Secure Unit Along Threshold
- Textured Floor Pattern
- Balsa Wood Core Floor Structure

Special Notes

- Factory Applied, Composite Encased Reinforcement
- Factory Installed, ADA Compliant Bar Configuration
- Factory Installed, ADA Compliant Folding Transfer Seat
- Factory Installed, 1" Dia. Stainless Steel Shower Rod
- Concealed, Tamper-Proof Bar & Rod Attachments
- Package Complies with ANSI A117.1-2003 Standard (ADA Compliance)

SHFW-3837 ADA03  
(right seat illustrated)



This package is configured for use with a shower curtain.  
This package incorporates flangless, brushed stainless steel bars with concealed tamper-proof connections.

**Transfer Shower Package**

Order No.: SHFW-3837 / ADA03 - RS  
(Right Seat / ADA Transfer Pkg)  
SHFW-3837 / ADA03 - LS  
(Left Seat / ADA Transfer Pkg)

38" x 37", One-piece gelcoated fiberglass shower stall with 1/2" threshold, structurally reinforced wall area, and factory installed ANSI-A117.1-2003 (ADA) compliant package.

**Package includes**

- ◆ (1), 1-1/2" dia. stainless steel, horizontally mounted, inside corner bar
- ◆ (1), 1-1/2" dia. stainless steel vertical assist bar
- ◆ (1), "L" shaped, folding (phenolic) seat with stainless steel frame and white laminate top
- ◆ (1), 1" dia. stainless steel shower rod

Dimensions shown are maximum. Due to the nature of the materials involved, actual unit dimensions can vary (tolerances: +0 / -3/8 inch).