

# VURSA SERIES SHOWER STALL

Oasis®



60-INCH MODEL

**SH-6036** (single seat)

Rough-In Dimensions

60" wide x 37-1/4" deep x 76-3/4" high (w/ 4-inch dam)

Finished Dimensions

60" wide x 36" deep x 75-1/2" high (w/ 4-inch dam)

Unit Features



- One - Piece Fiberglass Composite Construction
- Sanitary Grade Polyester Gelcoat Surface
- 3-3/8" Dia. Center Drain (see following pages)
- Elevated Corner Accessory Tower
- Generous, Multi-Level Back Wall Shelving
- Single, Ergonomic Seat
- Ergonomic Corner Foot Rest For Shaving
- Flat Wall Design To Accommodate Grab Bar Applications
- Center, Lower Accessory Shelf With Wash Cloth Rod
- Low Profile Dam (standard)
- Textured Floor Pattern
- Balsa Wood Core Floor Structure

Special Notes

- Optional ABF Model (provides 3 Inches of drain clearance)
- Factory Applied Reinforcement Packages Available (see following pages)
- Factory Applied Bar Packages Available (see following pages)

Order No.: SH-6036RS (RH seat / 4" dam)  
SH-6036LS (LH seat / 4" dam)

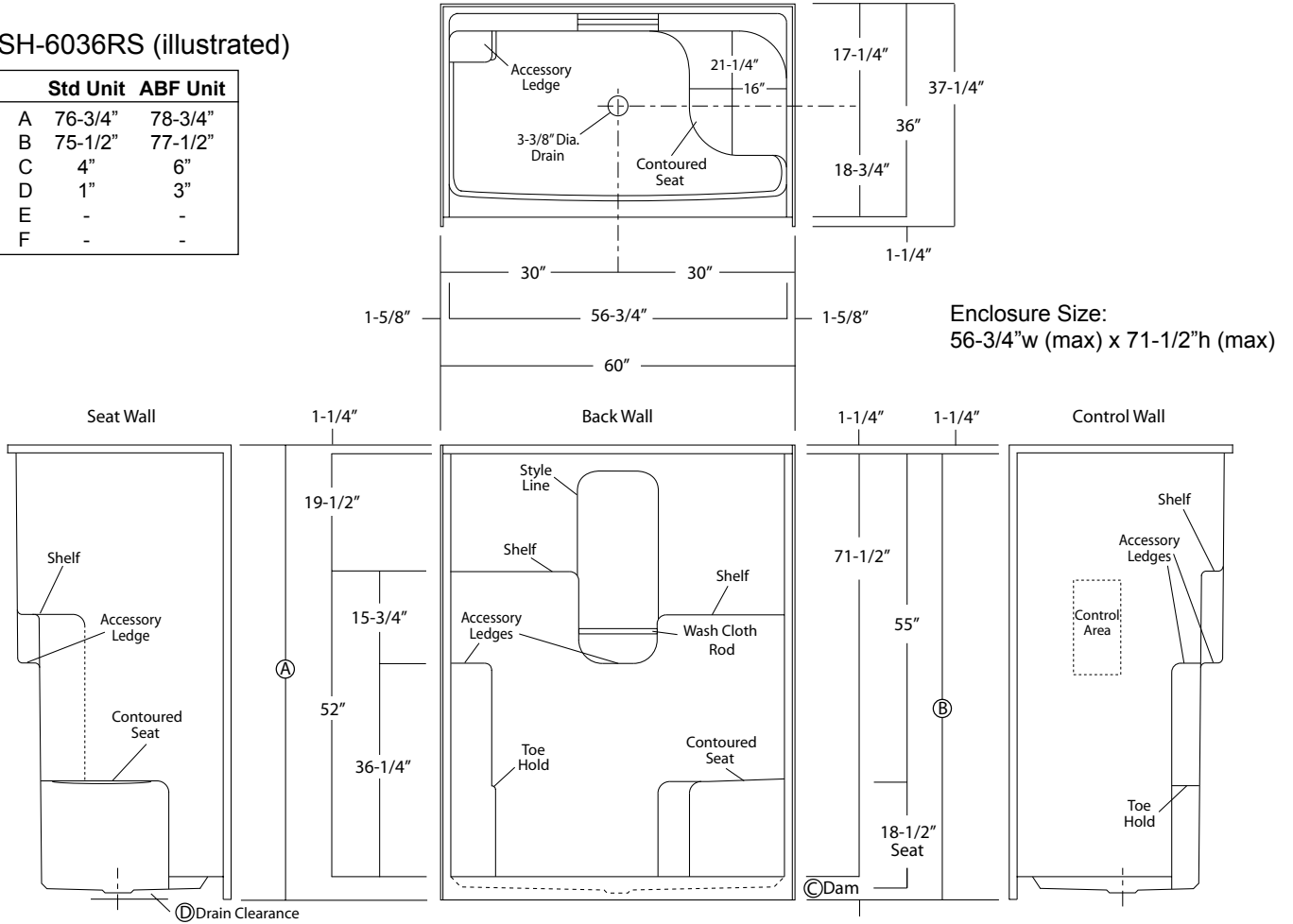
SH-6036RS ABF (RH seat / 6" dam)  
SH-6036LS ABF (LH seat / 6" dam)

60" x 36", one-piece gelcoated fiberglass shower stall with a single right hand or left hand contoured corner seat, 4" low profile dam (1" drain clearance), multi-level shelves, corner accessory ledge, wall surround, and center drain.

NOTE: ABF unit provides 3" drain clearance.

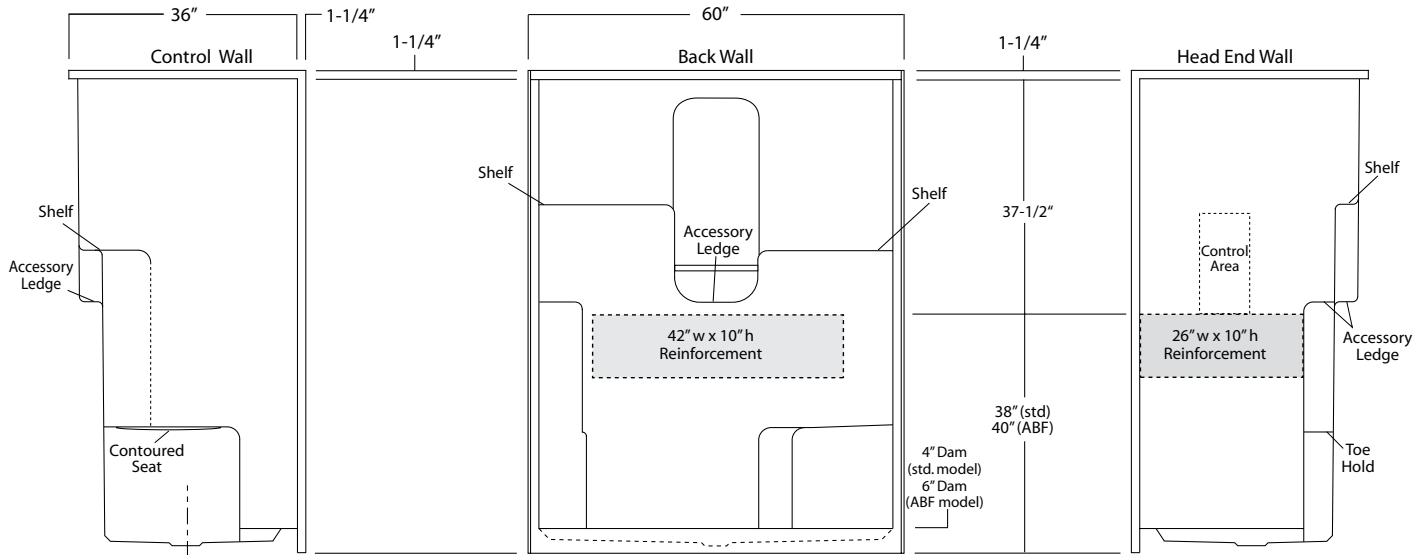
### SH-6036RS (illustrated)

	Std Unit	ABF Unit
A	76-3/4"	78-3/4"
B	75-1/2"	77-1/2"
C	4"	6"
D	1"	3"
E	-	-
F	-	-



**Package Order No.: FH (Fair Housing wall reinforcement)**

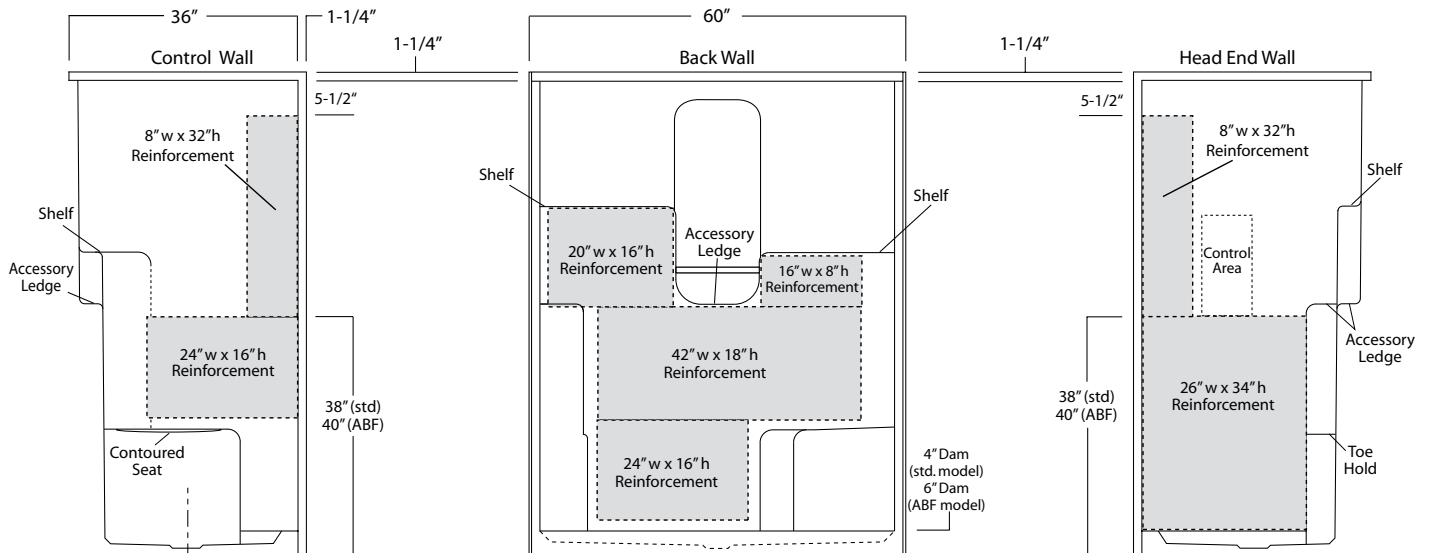
Package Includes: Factory applied, HUD-FHA compliant (Fair Housing), structurally reinforced wall areas (as shown) for the independent field application of bars.



**Package Order No.: 3SM (3-side, mid-level wall reinforcement)**

Package Includes: Factory applied, 3-side, mid-level, structurally reinforced wall areas (as shown), exceeding 'Fair Housing' (HUD/FHA) requirements.

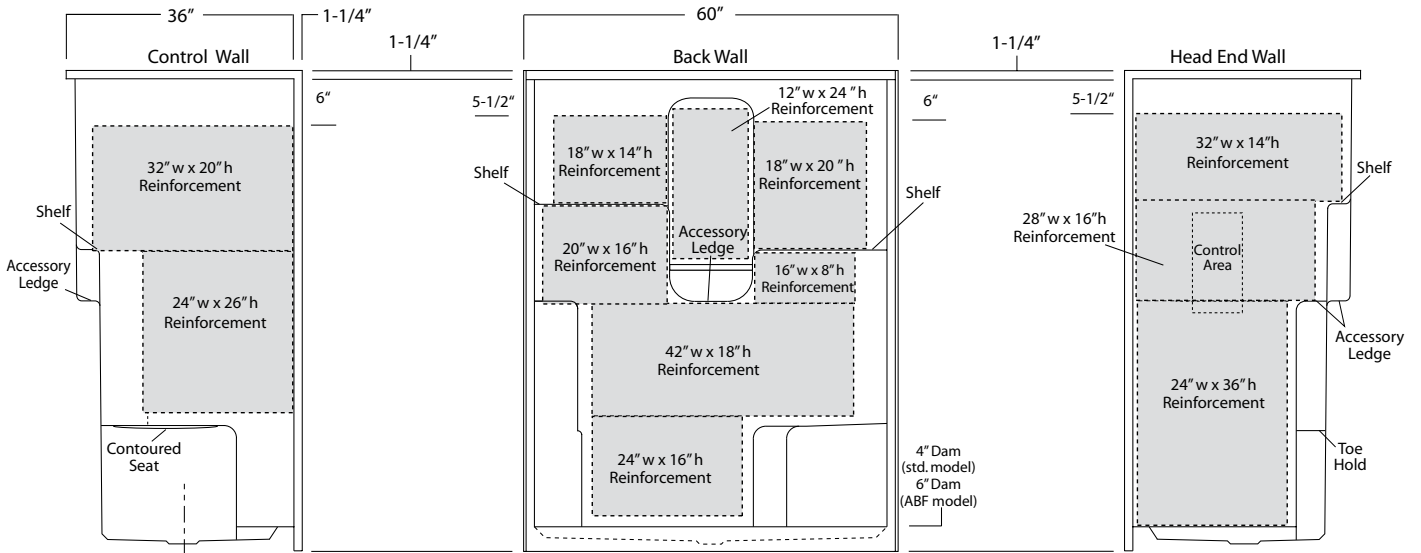
NOTE: Factory installed bar packages available using 3SM reinforcement.



**Package Order No.: 3SF (3-side, full-wall reinforcement)**

Package Includes: Factory applied, 3-side, full-wrap, structurally reinforced wall areas (as shown), exceeding 'Fair Housing' (HUD/FHA) requirements, for the independent field application of bars.

NOTE: Factory installed bar packages available using 3SF reinforcement.



**Package Order No.: BP1-60 (1-1/2" dia., stainless steel, 2-bar only package)**

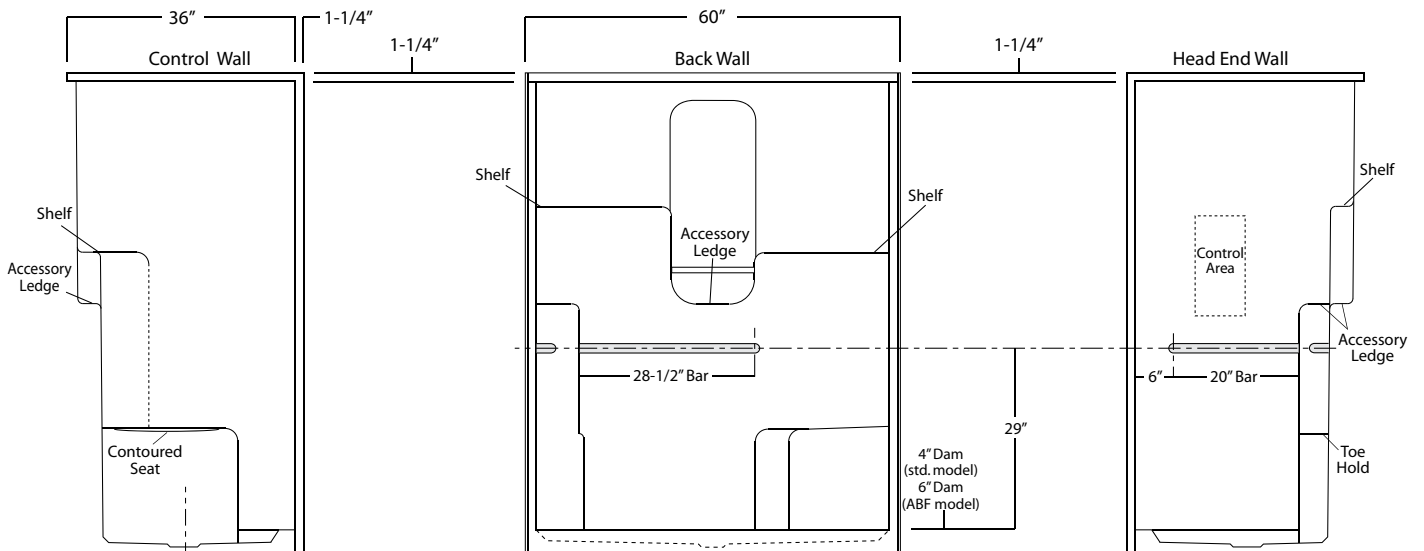
**Upgrade Package No.: BP1-60 WHT (1-1/4" dia., white powder coat, 2-bar only package)**

**BP1-60 OFW (1-1/4" dia., off-white powder coat, 2-bar only package)**

**BP1-60 SNK (1-1/4" dia., satin nickel, 2-bar only package)**

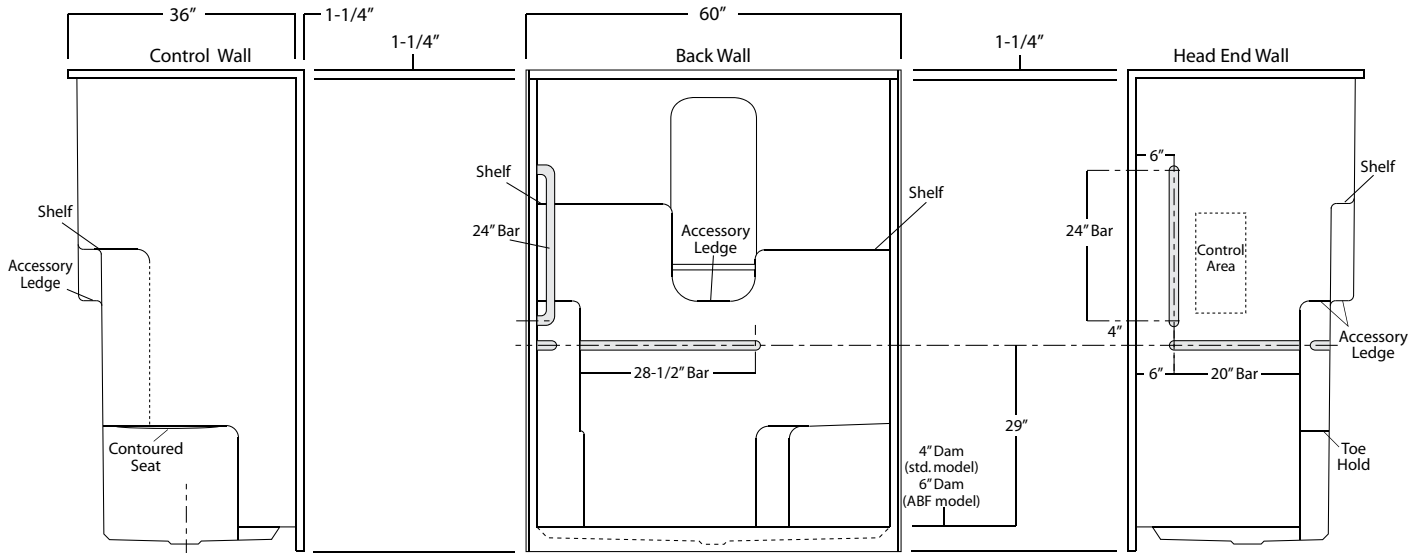
Package Includes: Factory installed, 1-1/2" dia. stainless steel, 2-bar package with basic reinforcement for components (as shown).

NOTE: Enhanced reinforcement available, see 3SM & 3SF packages.



**Package Order No.:** BP2-60 (3-bar only package)  
**Upgrade Package No.:** BP2-60 WHT (1-1/4" dia., white powder coat, 3-bar only package)  
 BP2-60 OFW (1-1/4" dia., off-white powder coat, 3-bar only package)  
 BP2-60 SNK (1-1/4" dia., satin nickel, 3-bar only package)

Package Includes: Factory installed, 1-1/2" dia. stainless steel, 3-bar package with basic reinforcement for components (as shown).  
 NOTE: Enhanced reinforcement available, see 3SM & 3SF packages.



Photographic images may include optional components and appear different than actual product.  
 Dimensions shown are maximum. Due to the nature of the materials involved, actual unit dimensions can vary (tolerances: +0 / -3/8 inch).  
 Oasis reserves the right to modify or discontinue product and/or associated equipment without prior written or verbal notification or obligation.