

VURSA *kd* SERIES SHOWER STALL

Oasis

SH3P-MD-6032R / TL-LS package
shown



MULTI-PIECE MODEL

SH3P-MD-6032 (3-pc / end drain / minimal dam)

Rough-In Dimensions

60" wide x 33-1/4" deep x 78-3/4" high

Finished Dimensions

60" wide x 32" deep x 77-1/2" high

Unit Features



- Three - Piece Fiberglass Composite Construction
- Sanitary Grade Polyester Gelcoat Surface
- Front-Side Installation With Minimal Sealant Requirements
- 3-3/8" Dia. End Drain
- 1/2" Threshold To Aid In Keeping Water Within Confines of Unit
- Contoured Threshold To Aid Entry And Exit
- Corner Accessory Ledge
- Generous, Multi-Level Back Wall Shelving
- Wall Design Accommodates Grab Bar Applications
- 1" Floor Flange To Secure Unit Along Threshold
- Textured Floor Pattern
- Balsa Wood Core Floor Structure

Special Notes

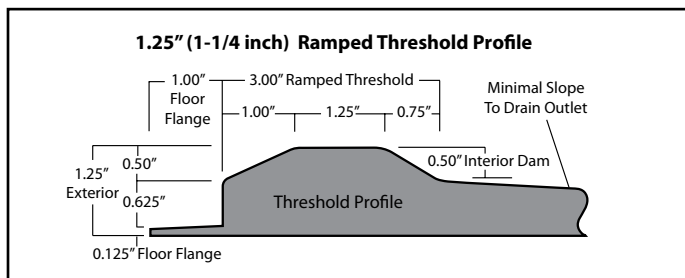
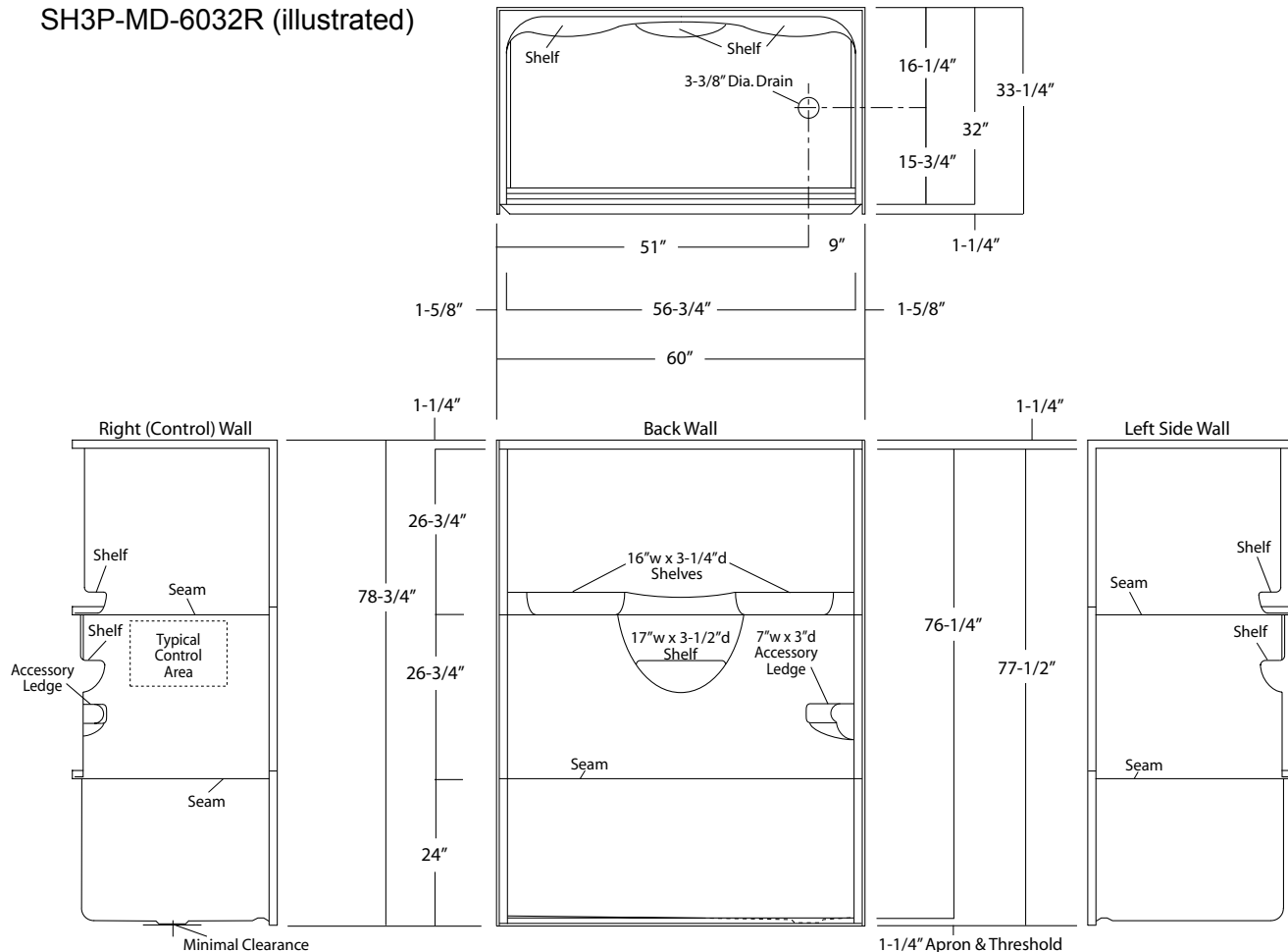
- 'QwikClic' Technology (Patents Pending)
- Factory Applied Reinforcement Packages Available (see following pages)
- Factory Applied Bar & Seat Packages Available (see following pages)

Order No.: SH3P-MD-6032R (RH drain-Minimal Dam)
SH3P-MD-6032L (LH drain-Minimal Dam)

60" x 32", 3-piece gelcoated fiberglass shower with 'QuikClic', front side installation, multi-level back wall shelves, corner accessory ledge, minimal dam for barrier-free entry, and drain on end indicated.

NOTE: This model DOES NOT meet the required interior dimensions for ADA Roll-In Shower compliance.

SH3P-MD-6032R (illustrated)



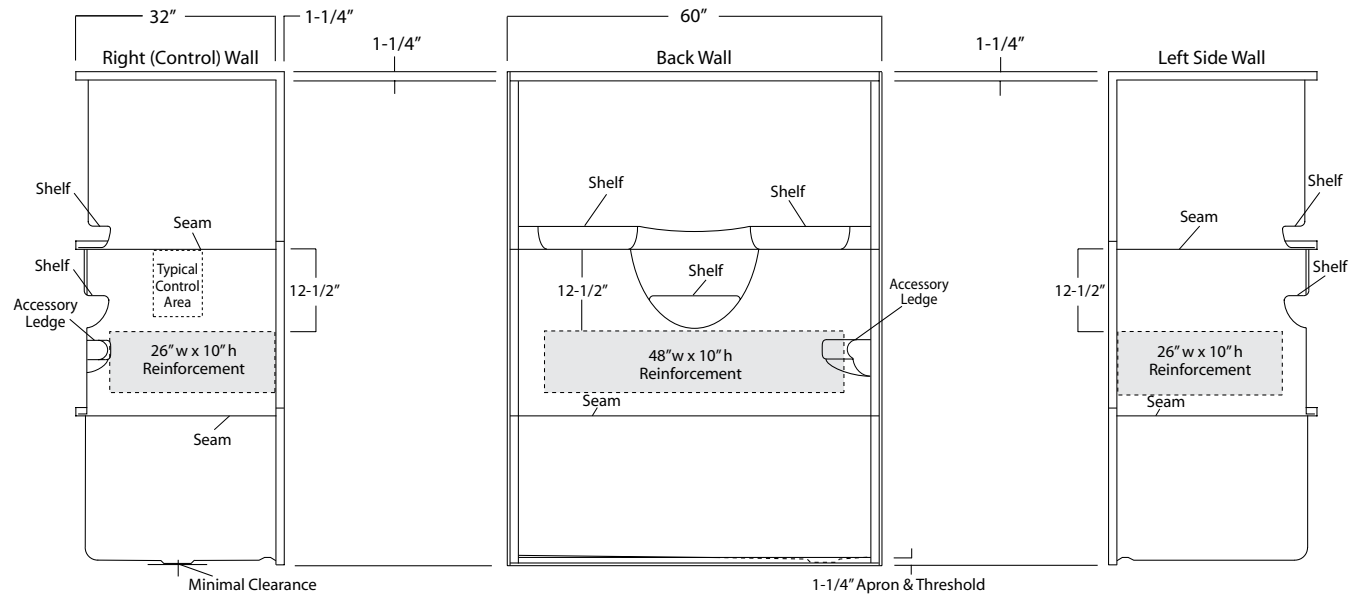
Enclosure Size:
56-3/4"w (max) x 76-1/4"h (max)

NOTE: Due to narrow threshold size and ramped configuration, care must be used in selecting an enclosure.

Package Order No.: FH (Fair Housing wall reinforcement)

Package Includes: Factory applied, HUD-FHA compliant (Fair Housing), structurally reinforced wall areas (as shown) for independent field application of bars.

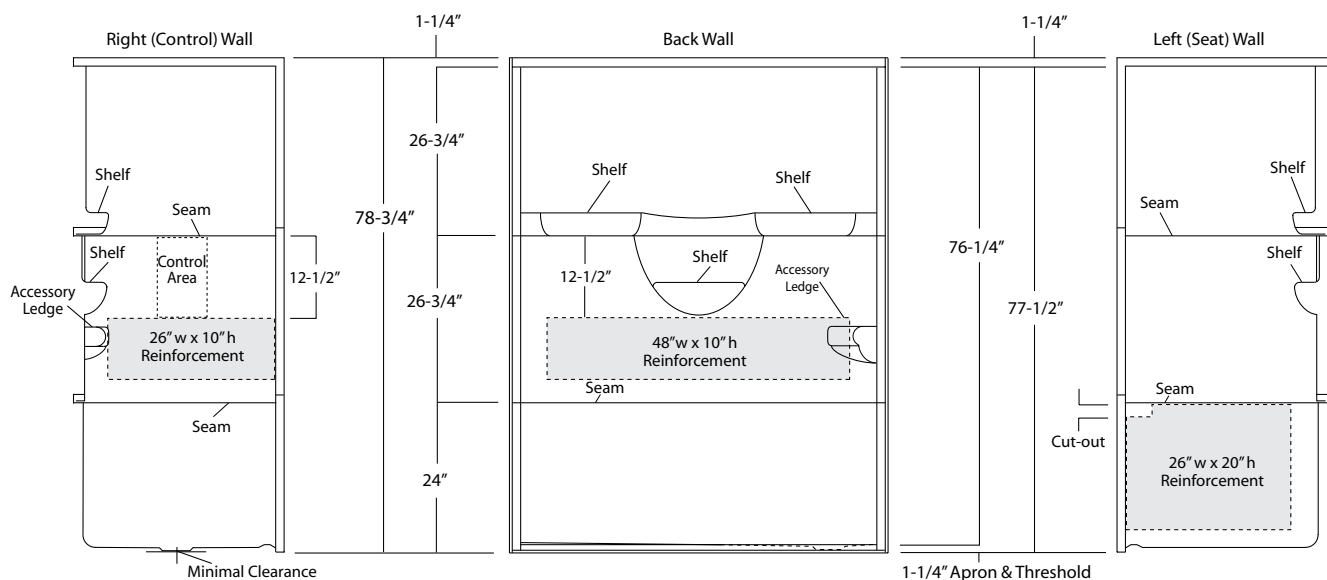
NOTE: Factory installed stainless steel shower curtain rod available.



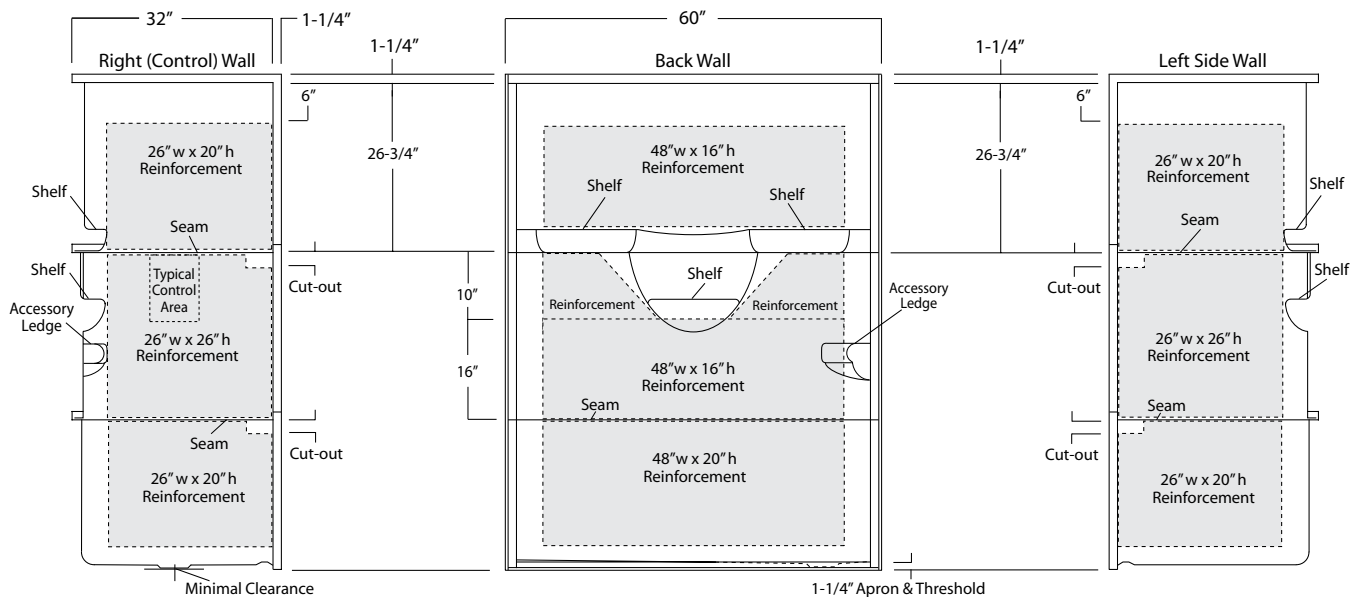
**Package Order No.: TLRF-LS (RH drain-LH seat reinforcement)
TLRF-RS (LH drain-RH seat reinforcement)**

Package Includes: Factory applied, 2-wall horizontal bar reinforcement and single-wall seat reinforcement (RS or LS).

NOTE: Factory installed stainless steel shower curtain rod available.

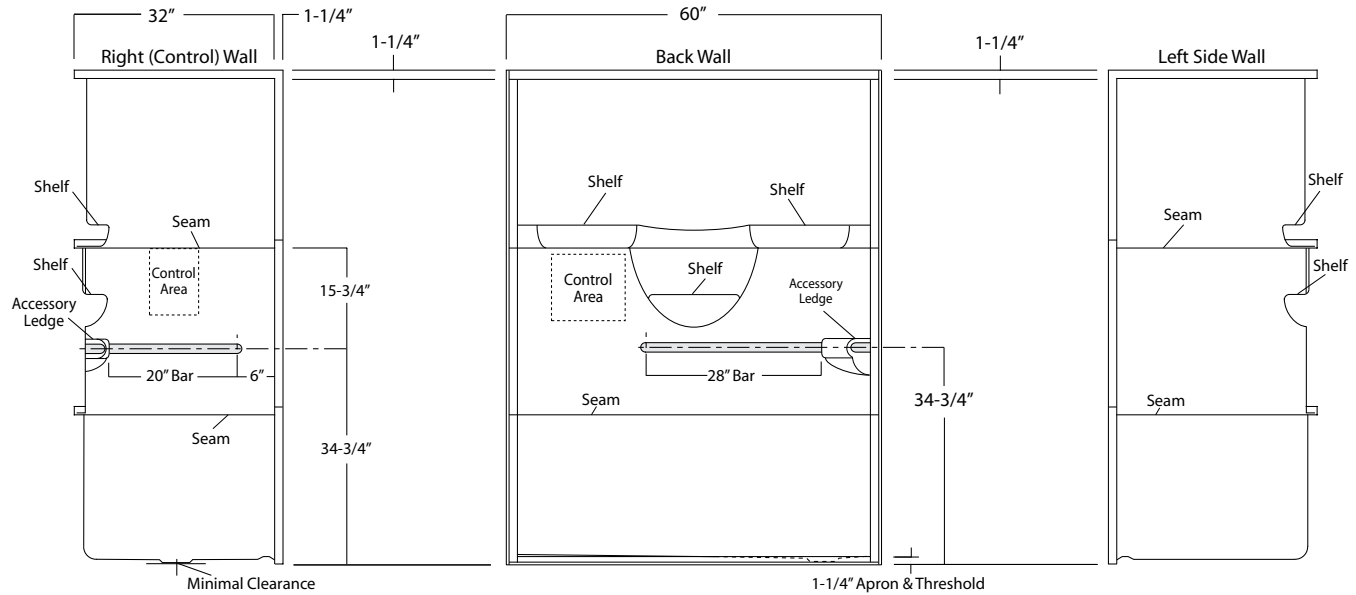


NOTE: Factory installed stainless steel shower curtain rod and bar packages available using 3SM reinforcement.



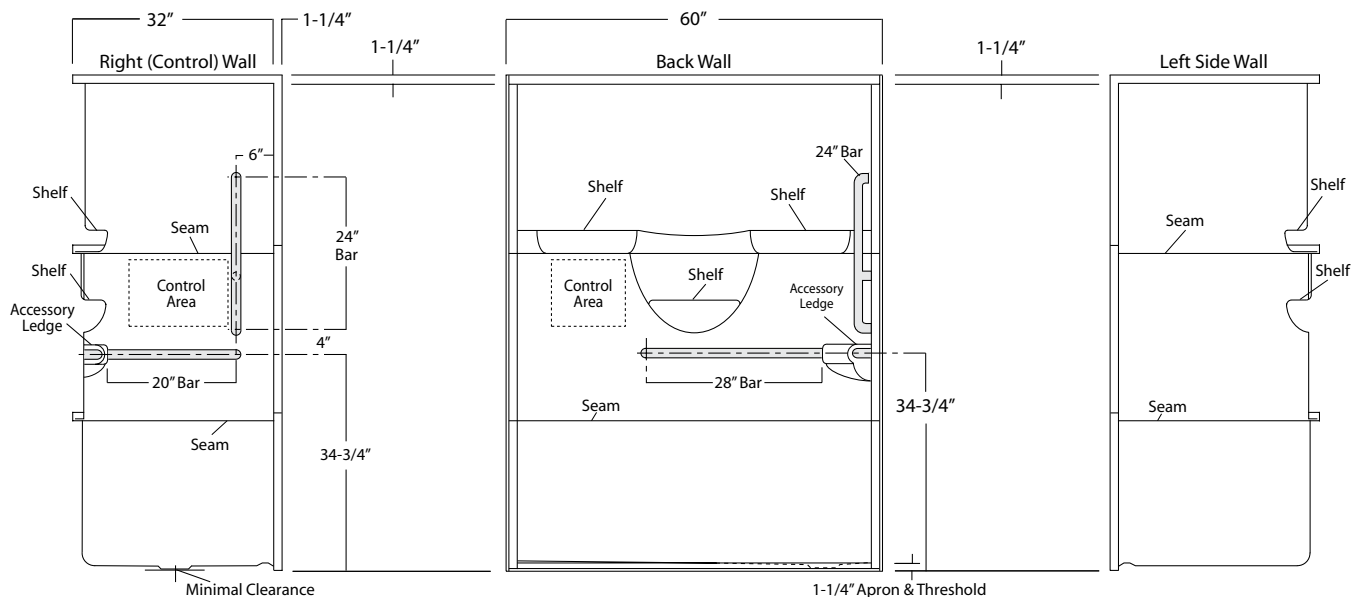
Package Order No.: BP1-60 (2-bar only package)
Upgrade Package No.: BP1-60 WHT (1-1/4" dia., white powder coat, 2-bar only package)
 BP1-60 OFW (1-1/4" dia., off-white powder coat, 2-bar only package)
 BP1-60 SNK (1-1/4" dia., satin nickel, 2-bar only package)

Package Includes: Factory installed, 1-1/2" dia. stainless steel, 2-bar package with basic reinforcement for components (as shown).
 NOTE: Enhanced reinforcement available, see 3SM & 3SF packages.
 NOTE: Factory installed stainless steel shower curtain rod available.

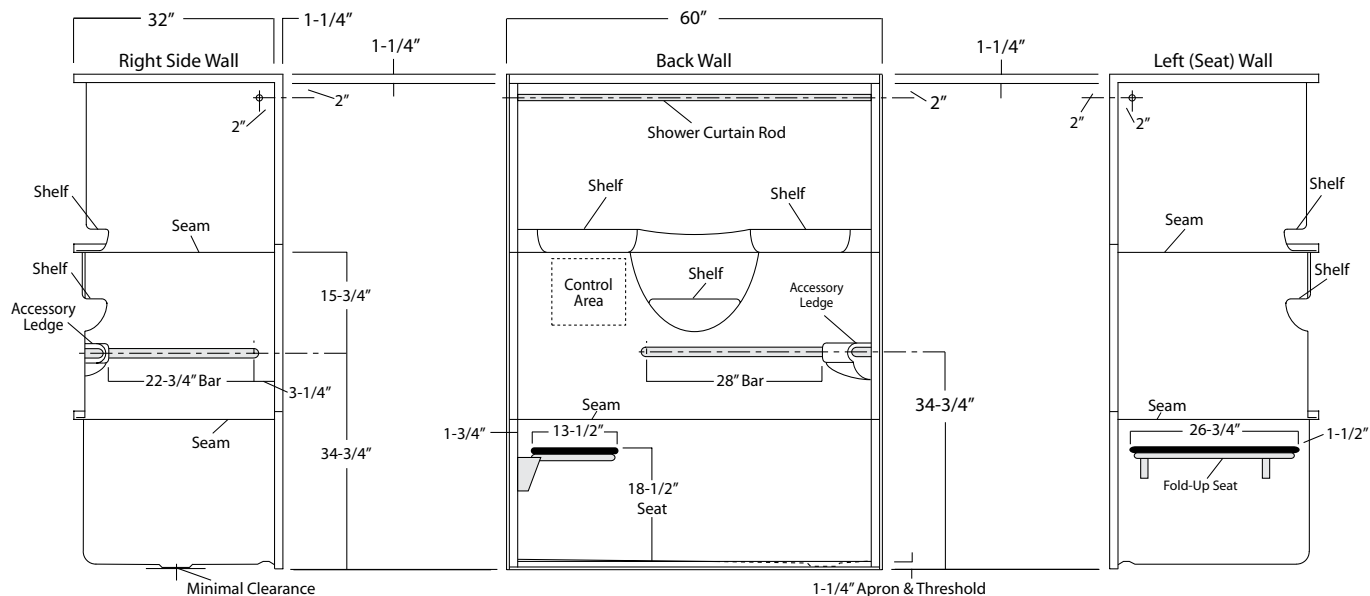


Package Order No.: BP2-60 (3-bar only package)
Upgrade Package No.: BP2-60 WHT (1-1/4" dia., white powder coat, 3-bar only package)
 BP2-60 OFW (1-1/4" dia., off-white powder coat, 3-bar only package)
 BP2-60 SNK (1-1/4" dia., satin nickel, 3-bar only package)

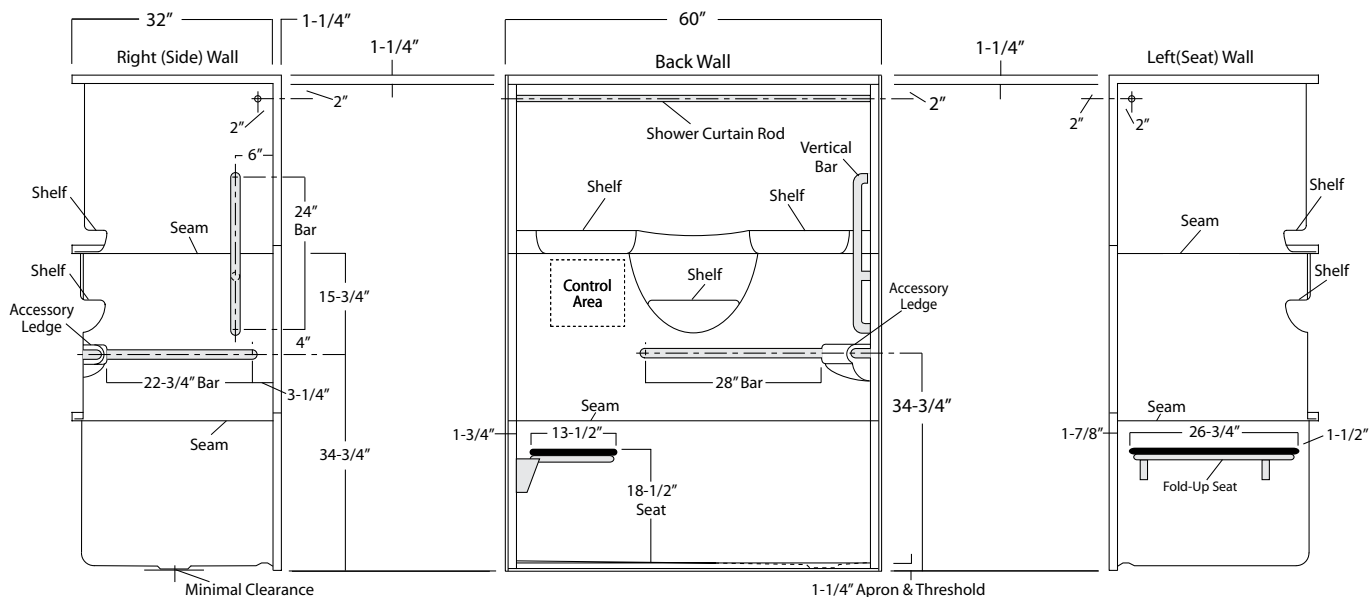
Package Includes: Factory installed, 1-1/2" dia. stainless steel, 3-bar package with basic reinforcement for components (as shown).
 NOTE: Enhanced reinforcement available, see 3SM & 3SF packages.
 NOTE: Factory installed stainless steel shower curtain rod available.



NOTE: Shower curtain rod may be deleted upon request.



NOTE: Shower curtain rod may be deleted upon request.



Oasis reserves the right to modify or discontinue product and/or associated equipment without prior written or verbal notification or obligation.