

**VURSA kd SERIES
SHOWER STALL**

Oasis

SH3P-6030R-LS ABF / BP1-60
shown



MULTI-PIECE MODEL

SH3P-6030 (3-piece / end drain / single seat)

Rough-In Dimensions

60" wide x 31-1/4" deep x 76-3/4" high (w/ 4-inch dam)

Finished Dimensions

60" wide x 30" deep x 75-1/2" high (w/ 4-inch dam)

Unit Features



- Three - Piece Fiberglass Composite Construction
- Sanitary Grade Polyester Gelcoat Surface
- Front-Side Installation With Minimal Sealant Requirements
- 3-3/8" Dia. End Drain
- Anti-Drip Front Dam Ledge
- Corner Accessory Ledge
- Generous, Multi-Level Back Wall Shelving
- Single, Ergonomic Right or Left Hand Seat
- Ergonomic Corner Foot Rest For Shaving
- Wall Design Accommodates Grab Bar Applications
- Textured Floor Pattern
- 1/2-inch Balsa Wood Core Floor Structure

Special Notes

- Optional ABF Model (provides 3-inches of drain clearance)
- 'QwikClic' Technology (Patents Pending)
- Factory Applied Reinforcement Packages Available (see following pages)
- Factory Applied Bar Packages Available (see following pages)

Order No.: SH3P-6030R-LS (RH drain-LH seat / 4" dam)
 SH3P-6030L-RS (LH drain-RH seat / 4" dam)

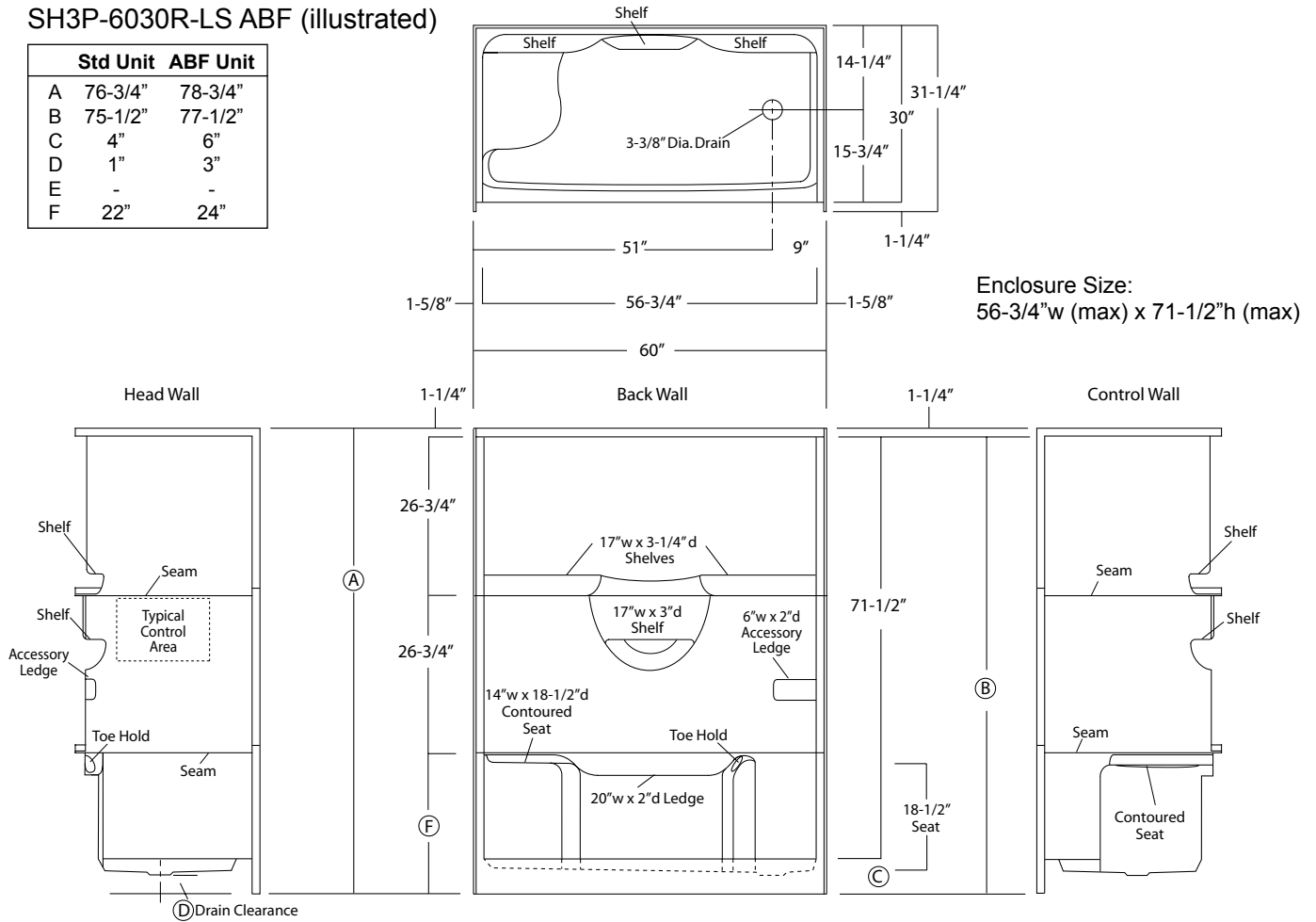
Order No.: SH3P-6030R-LS ABF (RH drain-LH seat / 6" dam)
 SH3P-6030L-RS ABF (LH drain-RH seat / 6" dam)

60" x 30", 3-piece gelcoated fiberglass shower with 'QuikClic', front side installation, multi-level back wall shelves, corner accessory ledge, integrated toe hold/shaving rest, molded end seat, and drain on end indicated.

NOTE: Base unit provides 1" drain clearance, ABF unit provides 3" drain clearance.

SH3P-6030R-LS ABF (illustrated)

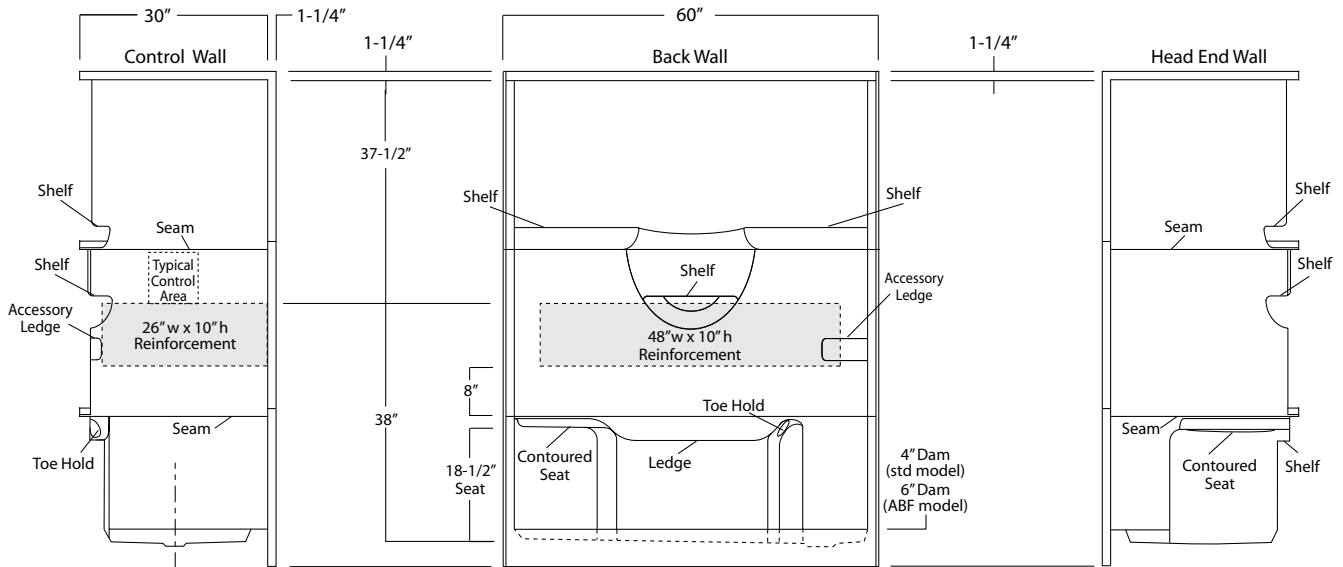
	Std Unit	ABF Unit
A	76-3/4"	78-3/4"
B	75-1/2"	77-1/2"
C	4"	6"
D	1"	3"
E	-	-
F	22"	24"



Package Order No.: FH (Fair Housing wall reinforcement)

Package Includes: Factory applied, HUD-FHA compliant (Fair Housing), structurally reinforced wall areas (as shown) for the independent field application of bars.

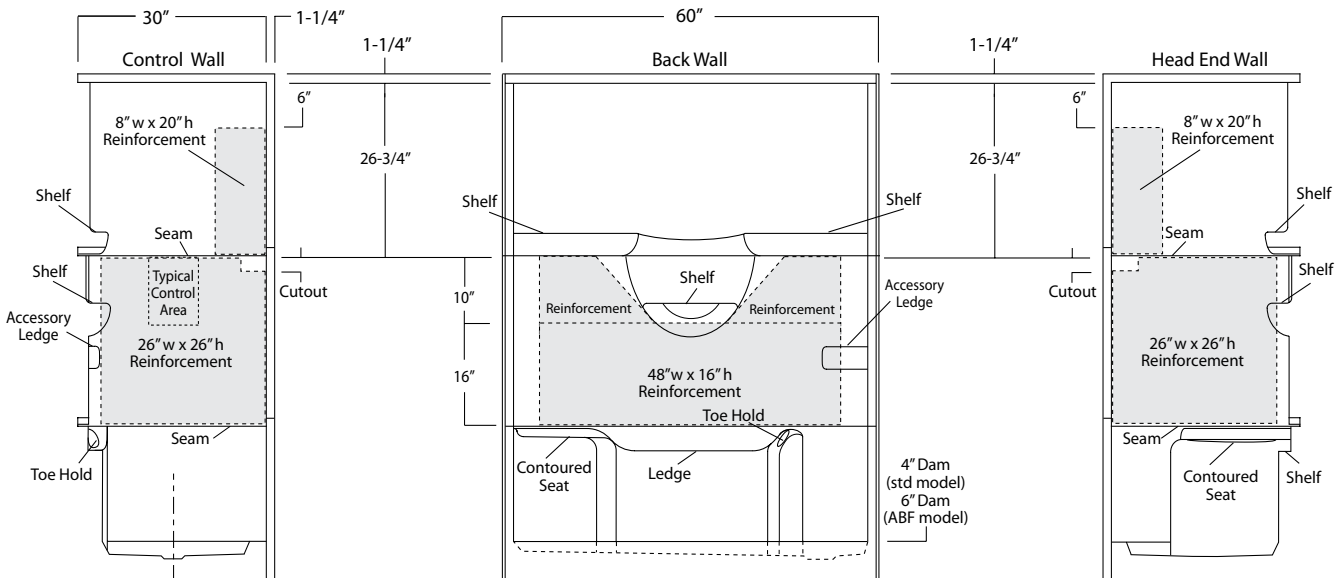
NOTE: Factory installed stainless steel shower curtain rod available.



Package Order No.: 3SM (3-side, mid-level wall reinforcement)

Package Includes: Factory applied, 3-side, mid-level, structurally reinforced wall areas (as shown), exceeding 'Fair Housing' (HUD/FHA) requirements.

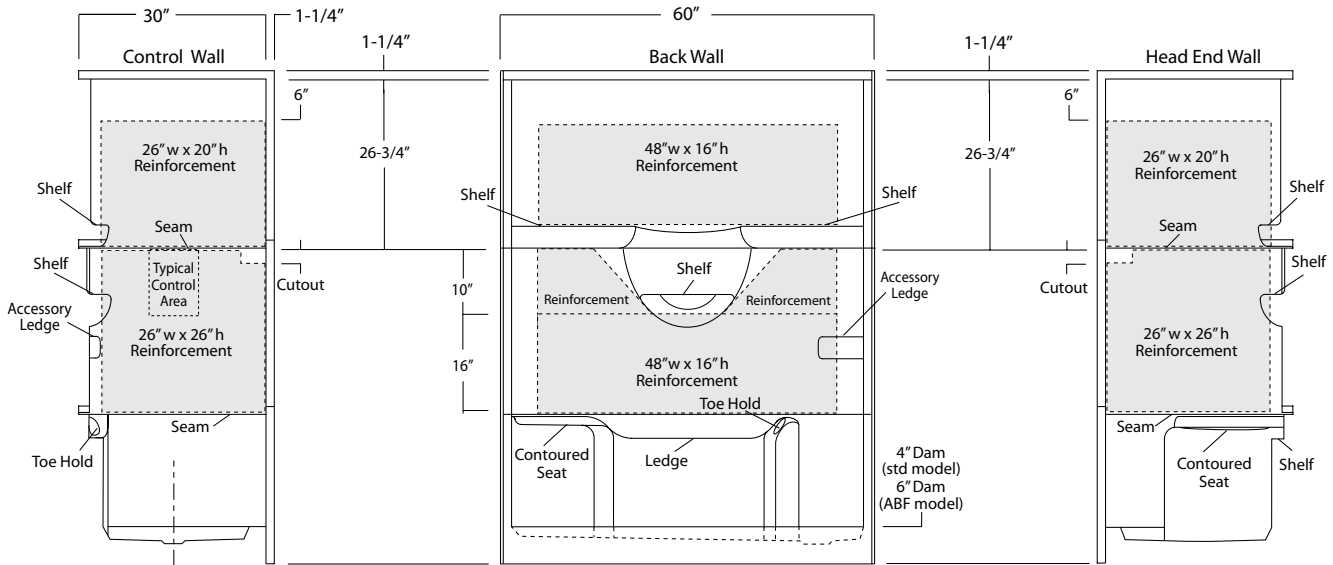
NOTE: Factory installed stainless steel shower curtain rod and bar packages available using 3SM reinforcement.



Package Order No.: 3SF (3-side, full-wall reinforcement)

Package Includes: Factory applied, 3-side, full-wrap, structurally reinforced wall areas (as shown), exceeding 'Fair Housing' (HUD/FHA) requirements, for the independent field application of bars.

NOTE: Factory installed stainless steel shower curtain rod and bar packages available using 3SF reinforcement.

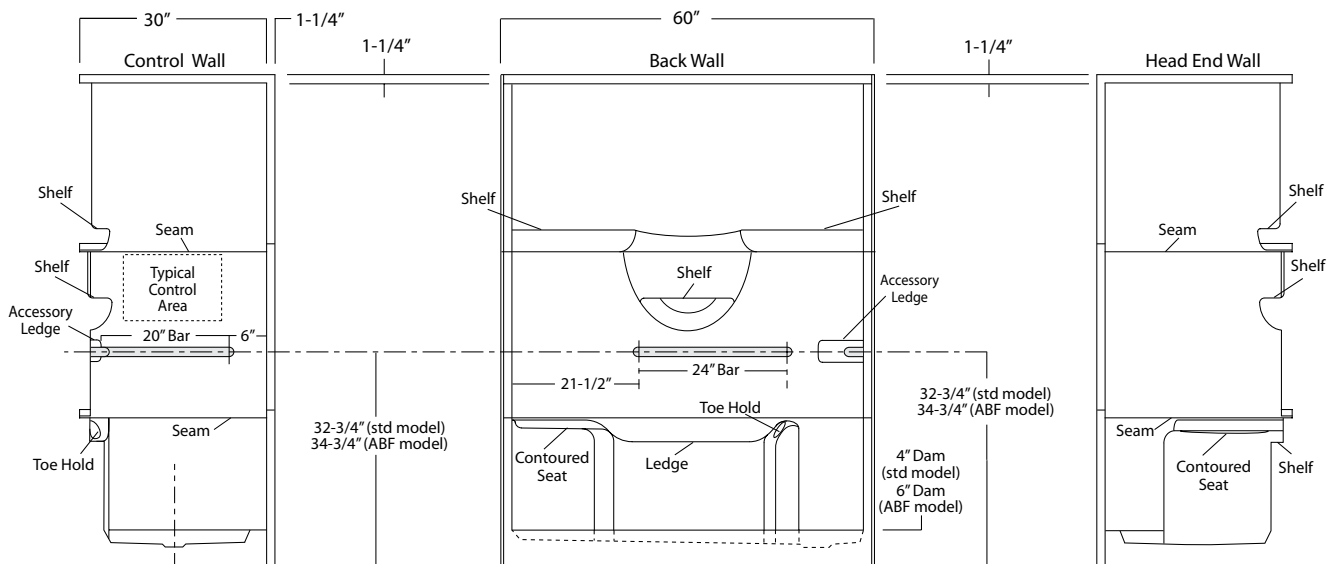


- Package Order No.:** BP1-60 (1-1/2" dia., stainless steel, 2-bar only package)
Upgrade Package No.: BP1-60 WHT (1-1/4" dia., white powder coat, 2-bar only package)
 BP1-60 OFW (1-1/4" dia., off-white powder coat, 2-bar only package)
 BP1-60 SNK (1-1/4" dia., satin nickel, 2-bar only package)

Package Includes: Factory installed, 1-1/2" dia. stainless steel, 2-bar package with basic reinforcement for components (as shown).

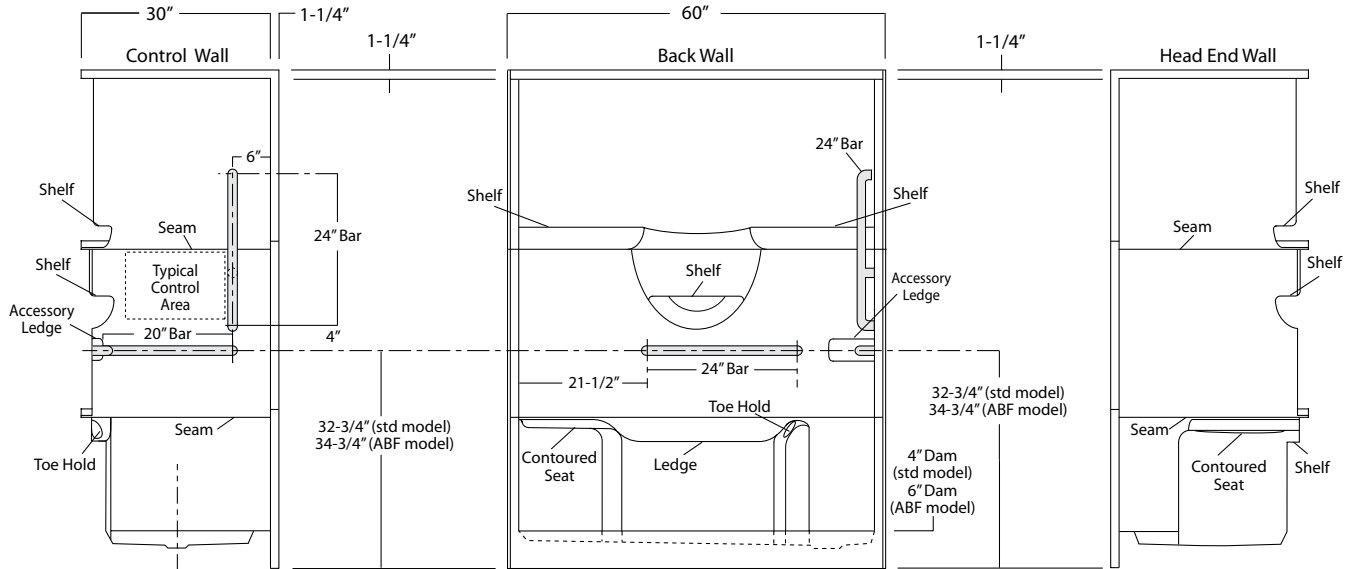
NOTE: Enhanced reinforcement available, see 3SM & 3SF packages.

NOTE: Factory installed stainless steel shower curtain rod available.



Package Order No.: BP2-60 (3-bar only package)
Upgrade Package No.: BP2-60 WHT (1-1/4" dia., white powder coat, 3-bar only package)
 BP2-60 OFW (1-1/4" dia., off-white powder coat, 3-bar only package)
 BP2-60 SNK (1-1/4" dia., satin nickel, 3-bar only package)

Package Includes: Factory installed, 1-1/2" dia. stainless steel, 3-bar package with basic reinforcement for components (as shown).
 NOTE: Enhanced reinforcement available, see 3SM & 3SF packages.
 NOTE: Factory installed stainless steel shower curtain rod available.



Photographic images may include optional components and appear different than actual product.
 Dimensions shown are maximum. Due to the nature of the materials involved, actual unit dimensions can vary (tolerances: +0 / -3/8 inch).
 Oasis reserves the right to modify or discontinue product and/or associated equipment without prior written or verbal notification or obligation.