



BARRIER-FREE VERSACOOLER® II WITH HANDS FREE BOTTLE FILLER P8EBF, PEBF

Suggested Specification

P8EBF shall deliver 8.0 gph of 50° F degree water at 90° F ambient and 80° F inlet water. Model P8EBF shall include P8AC and the VersaFiller Sports Bottle Filler with hands free activation; unit must have front and side push pads to activate the manual flow of water for the cooler. VersaFiller alcove and drip tray contain Freshield, WHICH UTILIZES a silver-based antimicrobial compound that reduces the growth of micro-organisms and mildew to protect the surfaces from discoloration, odors and degradation. Basin shall be designed to eliminate splashing and standing water. Bubbler shall be a Low Flow, one piece construction with flexible guard and operate between 20 and 120 PSI. VersaFiller cabinet finish is Brushed Stainless Steel. P8AC cabinet finish shall be Sandstone Powder Coated paint on galvanized steel or brushed stainless steel. Cooling system shall use R-134a refrigerant.

Models

P8EBF P8AC and PWEBF combination

PEBF PAC and PWEBF non refrigerated combination

Standard Features

- > Built-in 100 micron strainer stops particles before they enter the waterway
- > Waterways Are Lead-Free In Materials & Construction
- > Heavy Duty Galvanized Steel Frame
- > High Efficiency Cooling Tank and Coil
- > Refrigerant R-134a
- > Four Push Pad Manual Activation on water cooler
- > External Stream Height Adjustment on cooler
- > Independent Hands Free Bottle Filler with built in Bottle Counter

Finishes

- > VersaFiller Cabinet Finish is Brushed Stainless Steel
- > Standard Versacooler (bottom unit) Cabinet Finish: Sandstone Powder Coated Paint on Galvanized Steel
- > Optional finishes (at additional cost): Brushed Stainless Steel

Installation

- > Prior to roughing consult with local, state, and federal codes for proper mounting height.
- > Shipped with complete instructions and wall mounting brackets.
- > Removable side and front panels provide easy access for installation



ADA Water Cooler with Hands free, Sensor Activated Bottle Filler with Bottle Counter.

*Shown in Stainless Finish

Options (at additional cost)

- 1 Piece chrome plated brass bubbler (036700-001)
- Oasis Filtration system with flow switch and filter monitor

Powder Coated Finish Warranty (Continental limits of the United States and Canada): Three years on the powder coat finish provided that the water cooler has not been subjected to abuse, misuse, or alteration.

Limited 5-Year Warranty (Continental limits of the United States and Canada): Five years on the sealed refrigeration system and most component parts. Detailed warranty certificate enclosed with each water cooler; sample available upon request.

Export Warranty: One year on component parts. Detailed warranty certificate enclosed with each drinking fountain; sample copy available upon request.

Product Certified to NSF/ANSI Standard 61, Annex G (weighted average lead content of $\leq 0.25\%$) and is in compliance with California's Health & Safety Code Section 116875 (commonly known as AB1953). Models covered by this specification comply with all known Plumbing Codes. Listed by Underwriters' Laboratories to U.S. and Canadian standards.

ADA Compliant when properly installed.

Components in this fountain are lead free as defined by the Safe Drinking Water Act Amendments of 1986, and the Lead Contamination Control Act of 1988.



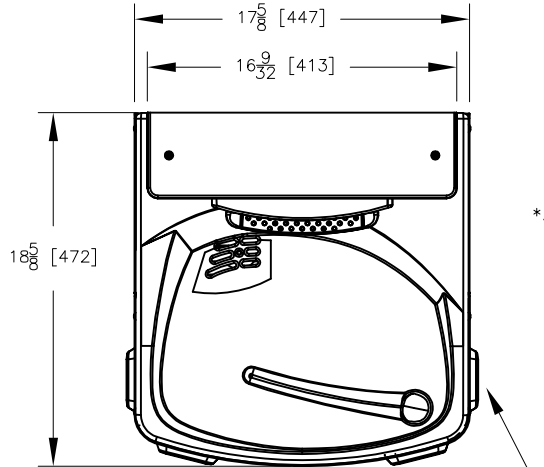
Oasis International Product Certified by NSF to NSF/ANSI Standard 61, G

Model	50° F Drinking Water 90° F Ambient Air Temp*				115 Volts, 60 HZ			Glass Filler Acc. Option	Cabinet Color Finish	Net Wt. Approx.
	Rated Capacity GPH	Base Rate GPH	Pre-Cooler	Hot 'N Cold™ Model	Compr. HP	Full Load Amps	Rated Watts			
P8EBF	8.0	8.0	No	No	1/4	4.6	460	No		63 Lbs.

* Industry Standard Rating Condition 80° F inlet water temperature. *NSF Pending.

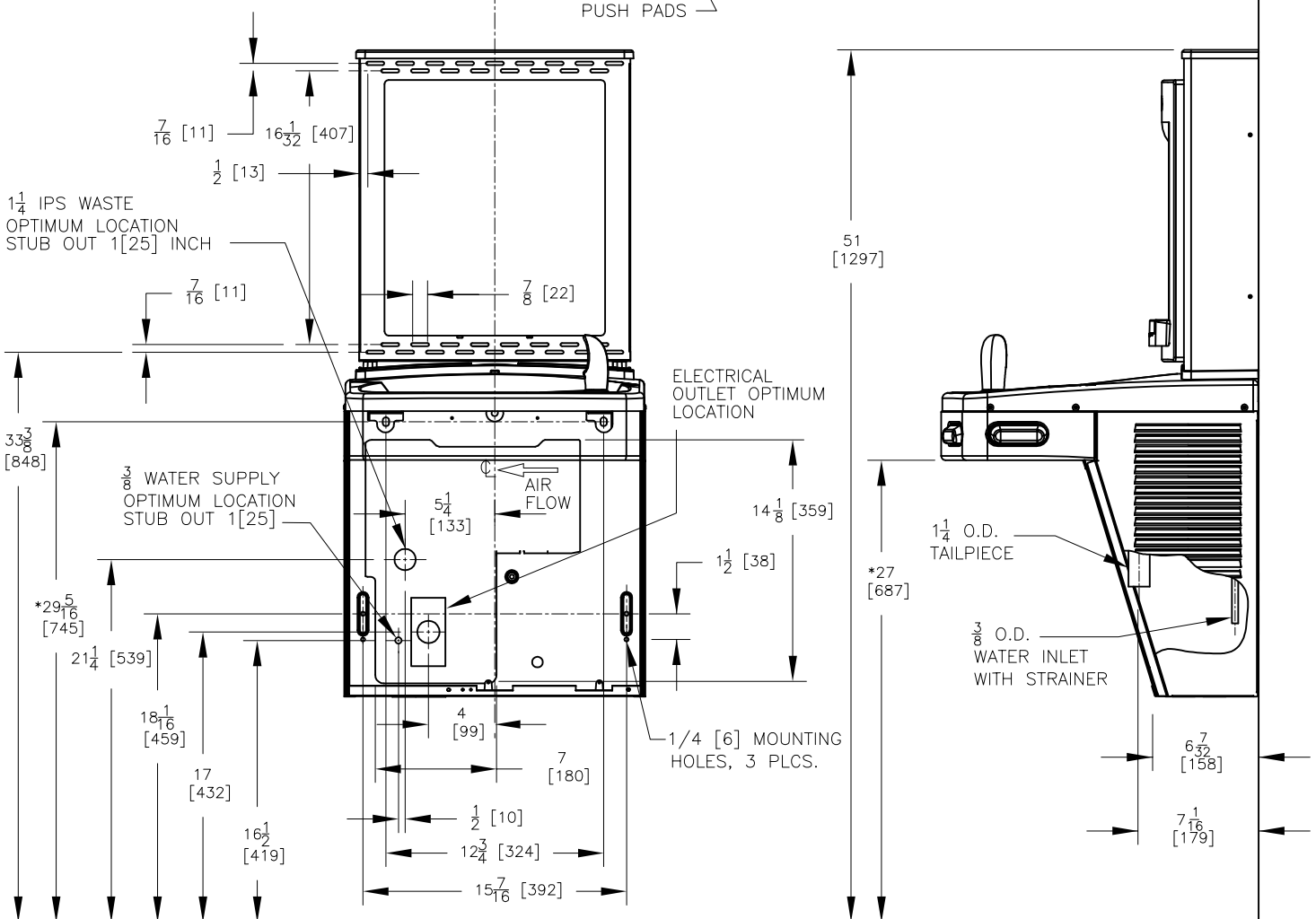
Specifications subject to change without notice

OASIS[®] P8EBF: Versacooler[®] II Model P8AC WITH VersaFiller MODEL PWEBF

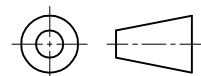


NOTES:

1. TRAP, STOP VALVE AND ELECTRICAL OUTLET NOT FURNISHED.
2. ALLOW 4 INCHES [102 MM] MIN. PER SIDE FOR VENTILATION.
- *3. RECOMMENDED ADULT BARRIER FREE HEIGHT INSTALLATION SHOWN. REDUCE HEIGHT BY 3 INCHES FOR INSTALLATIONS USED PRIMARILY BY CHILDREN AGES 12 AND YOUNGER. UNIT SHALL ALSO HAVE A MINIMUM CLEAR FLOOR SPACE 30[760] BY 48[1220]. ADJUST VERTICAL DIMENSIONS AS REQ'D TO COMPLY WITH FEDERAL, STATE, AND LOCAL CODES.
4. ALL DIMENSIONS ARE IN INCHES. DIMENSIONS IN BRACKETS [] ARE IN MILLIMETERS.



THIRD ANGLE PROJECTION



ROUGHING-IN
AND
DIMENSIONAL DRAWING