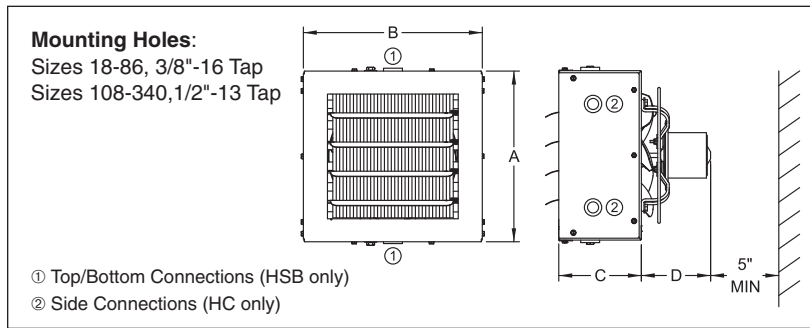


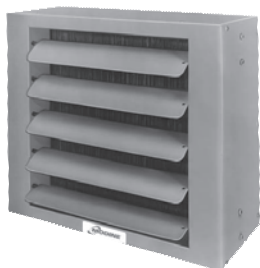
HORIZONTAL AIR DELIVERY MODELS

Dimensions - Models HSB/HC



Model Size	HSB		HC		C	D ③	Approx. Weight (lbs)
	A	B	A	B			
18 & 24	12.38	13.00	11.50	13.00	6.00	5.00	16 & 20
33 & 47	16.38	17.50	15.00	17.50	8.75	6.00	34 & 36
63 & 86	20.44	21.50	18.50	21.50	8.75	7.75	48 & 52
108 & 121	24.44	25.50	22.50	25.50	9.50	6.75	74 & 76
165	30.50	30.50	26.50	29.50	9.25	8.50	92
193	30.50	30.50	30.50	32.50	9.25	8.50	98
258 & 290	38.50	38.50	38.50	38.50	12.50	10.00	162 & 168
340	38.50	44.50	38.50	44.50	12.50	10.00	176

③ Dimensions shown apply to standard 115V/1ph motor (Power Code 01).



Model HSB



Model HC

HSB and HC models feature the following:

- Squared off corners for a clean, smooth appearance.
- HSB models have top and bottom supply and return steel connections.
- HC models have a copper tube and copper coil connections located on the side for low clearance applications.
- A two piece casing for quick access to coil.
- An electric junction box for easy electrical connections.
- Baked on gray-green, electrostatically applied polyester powdercoat, environmentally friendly paint.
- Motors are totally enclosed with thermal overload protection.
- Low outlet temperature models for higher steam pressures or dirty atmospheres.
- Listed by the Canadian Standards Association and CRN registered heat exchanger.



Performance Data (60°F Entering Air Temperature)

Model Number	Motor HP	Standard Models							Low-Outlet Temperature Models						
		Steam (2# Steam)		Hot Water (200°F In, 180°F Out)			CFM	Max. Mtg. Height (Ft)	Heat Throw @ Max. Mtg. Height (Ft)	Steam (2# Steam)					
		Btu/Hr	Final Air Temp. (°F)	Btu/Hr	Water Flow (GPM)	Final Air Temp. (°F)				Model Number	Btu/Hr	CFM	Final Air Temp. (°F)	Max. Mtg. Height (Ft)	Heat Throw @ Max. Mtg. Height (Ft)
HSB/HC 18	1/60	18,000	107	12,560	1.3	94	340	9	18	HSB/HC 18L	15,900	364	100	9	20
HSB/HC 24	1/25	24,000	119	16,250	1.7	100	370	10	19	HSB/HC 24L	19,300	435	100	11	21
HSB/HC 33	1/25	33,000	108	21,680	2.3	91	630	11	22	HSB/HC 33L	29,500	695	99	12	24
HSB/HC 47	1/12	47,000	119	30,940	3.2	98	730	13	30	HSB/HC 47L	32,000	855	94	14	32
HSB/HC 63	1/12	63,000	111	45,580	4.7	97	1120	15	31	HSB/HC 63L	52,500	1170	101	16	33
HSB/HC 86	1/8	86,000	118	60,210	6.3	101	1340	16	33	HSB/HC 86L	61,500	1510	97	17	36
HSB/HC 108	1/8	108,000	109	83,740	8.7	98	2010	18	33	HSB/HC 108L	86,500	2150	97	19	36
HSB/HC 121	1/5	121,000	122	93,000	9.7	108	1775	17	27	HSB/HC 121L	88,000	2070	98	18	29
HSB/HC 165	1/3	165,000	106	130,950	13.6	97	3240	20	43	HSB/HC 165L	143,000	3480	97	21	45
HSB/HC 193	1/3	193,000	121	143,000	14.9	105	2900	19	40	—	—	—	—	—	—
HSB/HC 258	1/2	258,000	111	201,950	21	100	4560	20	47	HSB/HC 258L	190,000	4655	98	22	51
HSB/HC 290	1/2	290,000	117	228,620	23.8	105	4590	21	49	HSB/HC 290L	207,000	5040	94	23	53
HSB/HC 340	1/2	340,000	120	271,110	28.2	108	5130	21	49	HSB/HC 340L	255,000	5575	102	23	53

③ Dimensions shown apply to standard 115V/1ph motor (Power Code 01).