



5180

Back Mounted, Security Lavatory

This Lavatory Fixture is designed for high-security areas with an accessible pipe chase. The fixture is fabricated using 14-gauge type 304 stainless steel, seamlessly welded to form a one piece, vandal resistant unit. Internal piping is stainless steel. Lavatory is furnished with a 4" (102mm) high backsplash and integral ribbed soap tray. The fixture interior is coated with a sound-dampening fire-resistant material. Exposed surfaces are polished to a satin finish. Valves and valve outlets must be specified separately.

INSTALLATION

An accessible pipe chase is required. Four anchor rods are screwed into sockets on back of the fixture. Anchor rods pass through the wall and are secured from the pipe chase using washer lugs and hex nuts provided. The installer must provide wall openings for anchor rods, piping and valve operators per rough-in drawings provided by Metcraft. Valves are installed in the pipe chase. Fixture meets A.D.A. requirements when installed per A.D.A. guidelines.

NOTE: A security frame (wall sleeve) is recommended when installed on a new block (CMU) or poured concrete wall. A security frame is not appropriate for hollow wall construction.

STANDARD FEATURES

- Plated steel concealed anchor rods and fasteners.
- Rectangular lavatory basin with multi-hole fast drain.
- Integral soap tray with ribbed bottom.
- Stainless steel elbow waste with 1 1/4" (32mm) OD plain end extended 4" (102mm) past back of fixture.
- 4" (102mm) high back splash.
- Integrally welded bottom enclosure.



Unit may be pictured with some optional features.

OPTIONS & ACCESSORIES

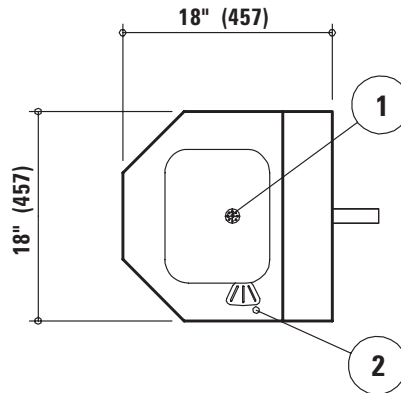
- A120** Security frame (wall sleeve)
- A168** Metal template
- B1** Penal filler/bubbler
- B2** Penal filler/bubbler w/mouthguard
- B3** Filler only
- A311** Single temperature, pneumatic valve
- A312** Hot & cold, pneumatic valve
- A313** Single temperature pneumatic valve, manifolded for 2, 3 or 4 fixtures
- A314** Hot & cold, pneumatic valve, manifolded for 2, 3 or 4 fixtures
- A331** Single temperature, non-metering valve
- A332** Hot & cold, non-metering valve
- HT** Single tension release towel hook
- TB** Toothbrush holder
- EPL** s/s elbow waste w/extension 3" (76mm) into chase w/air vent
- ET2** s/s elbow waste w/1 1/2" (38mm) FIPT outlet w/air vent
- PPE** s/s P-trap waste w/4" (102mm) plain end extension 1 1/4" (32mm) OD outlet w/air vent
- PPL** s/s P-trap waste w/extension 3" (76mm) into chase w/air vent
- PT2** s/s P-trap waste w/1 1/2" (38mm) FIPT outlet w/air vent
- A235** Lavatory trap assembly extension 1 1/2" (38mm)
- A240** Lavatory waste extension 1 1/2" (38mm) with cleanout
- A205-1** Lavatory waste coupling 1 1/4" (32mm) s/s to 1 1/2" (38mm) COPPER
- A205-2** Lavatory waste coupling 1 1/4" (32mm) s/s to 1 1/4" (38mm) PL/STL
- A205-3** Lavatory waste coupling 1 1/4" (32mm) s/s to 2" (51mm) CI

METCRAFT

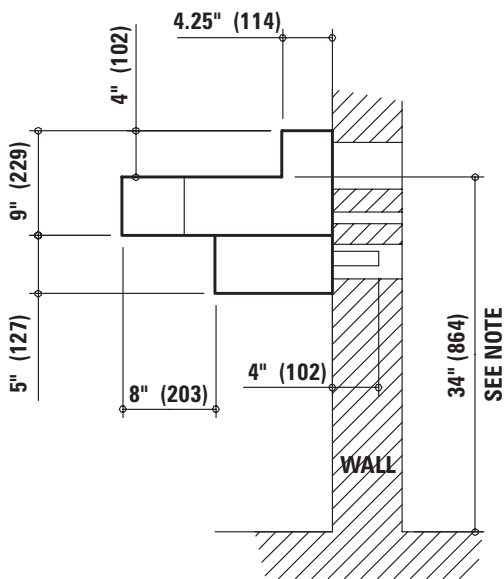
INDUSTRIES INC.



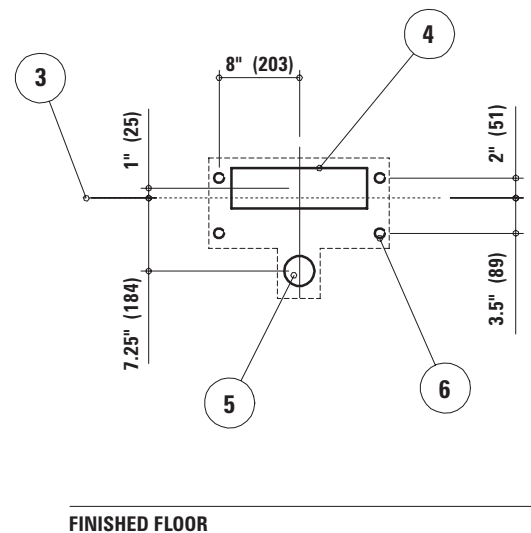
FIXTURE PLAN VIEW



FIXTURE SIDE VIEW



WALL ELEVATION VIEW (fixture side)



ROUGH-IN INFORMATION

- ① Fast drain
- ② Soap dish
- ③ Lavatory rim location
- ④ 4" x 13 1/2" (102mm x 343mm) wall opening for valve plumbing
- ⑤ 3" (76mm) dia. wall opening for sink waste outlet
- ⑥ 1" (25mm) dia. wall opening for anchors (4)

NOTE: To mount lavatory in accordance with "A.D.A." requirements the rim height must be mounted at 34" (864mm) above finished floor.

Due to continuous product improvement Metcraft reserves the right to make changes in design and specifications without prior notice. All dimensions should be verified with the factory for current information.

2004

