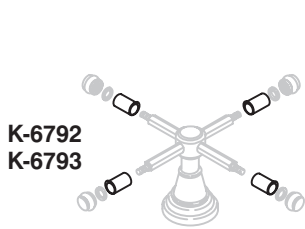


KOHLER®

INSTALLATION INSTRUCTIONS

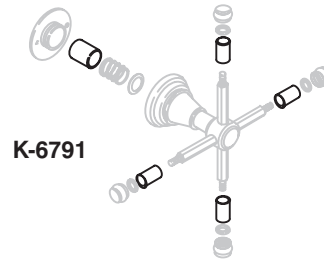
IV GEORGES BRASS™ ACCENT KITS



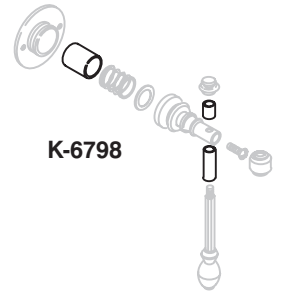
K-6792
K-6793



K-6792
K-6793



K-6791

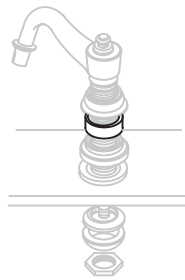


K-6798

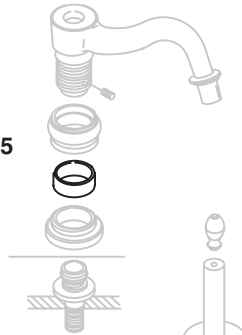


K-6797

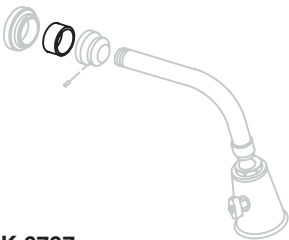
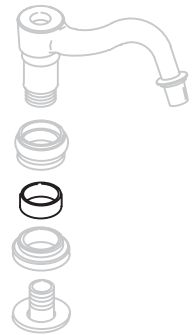
K-6799
K-6793



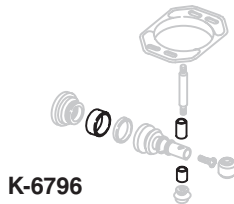
K-6795



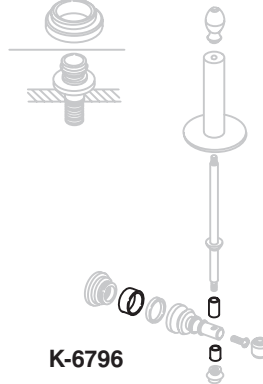
K-6795



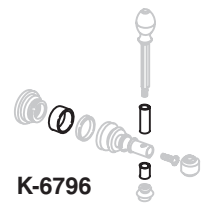
K-6797
K-6792



K-6796



K-6796



K-6796

SPECIFICATIONS

Accent kit for K-6803	K-6795
Accent kit for K-6812, K-6818, K-6819, K-6820	K-6796
Accent kit for K-6805-4, K-6806-4, K-6807-4, K-6814-4	K-6797
Accent kit for K-6804-XX, K-6805-XX, K-6805-3, K-6806-3, K-6807-3, K-6813-3, K-6814-3	K-6792
Accent kit for K-T6808-4D, K-T6809-4D, K-T6810-4D, K-6821	K-6798
Accent kit for K-T6808-3D, K-T6809-3D, K-T6810-3D,	K-6791
Accent kit for K-6811-4	K-6799
Accent kit for K-6811-3	K-6793

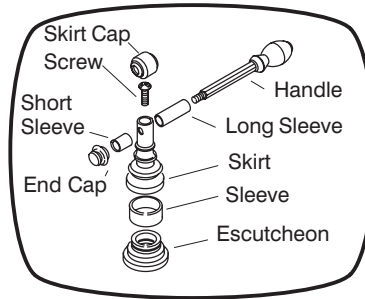
NOTES

BEFORE YOU BEGIN:

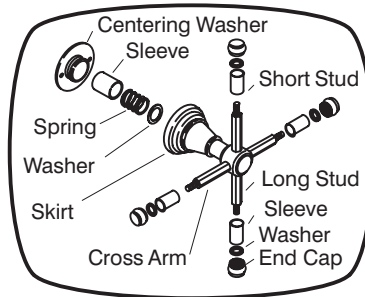
- Observe all local plumbing and building codes.
- Shut off hot and cold water supplies.
- Inspect waste and supply tubing; replace if necessary.

REQUIRED TOOLS & MATERIALS:

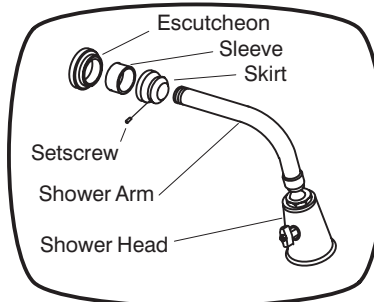
- Screwdriver
- Pipe or strap wrench
- Thread sealant
- Plumbers putty



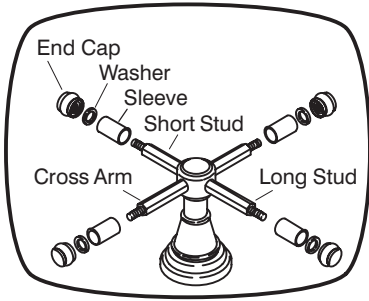
1 LEVER TWO-HANDLE FAUCET: Unscrew end cap and remove short sleeve, long sleeve, and handle. For shower door handles, reassemble at this point with new sleeves. For other handles, remove skirt cap, screw, skirt, and sleeve. Reassemble with new sleeves.



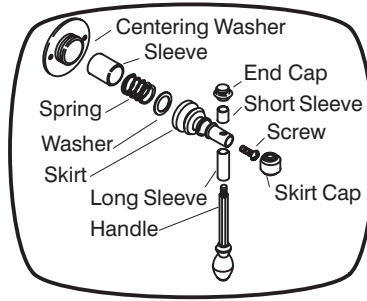
4 CROSS RITE-TEMP FAUCET: Unscrew end caps with washers from each of the handle arms. Remove sleeves. Unscrew short stud from long stud. **NOTE:** Unless the short stud was marked during installation, you may have to attempt to unscrew each of the arms until successful. Remove cross arm from large round holes in cap and hex holes in bonnet. Remove center cap from stem. Remove screw inside bonnet and remove bonnet. Remove washer. Remove spring and spacer. Insert spring into new spacer. Place spacer on centering plate. Continue with installing handle, using new sleeves on handle arms.



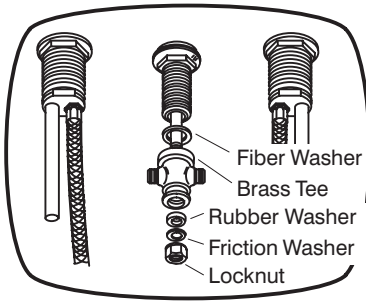
7 SHOWER: Loosen skirt setscrew. Carefully unscrew shower arm with a wrench. Use caution to avoid scratching the finish. Install a new sleeve between skirt and escutcheon. Apply fresh thread sealant if necessary and reattach shower arm. Position skirt setscrew facing upwards and tighten.



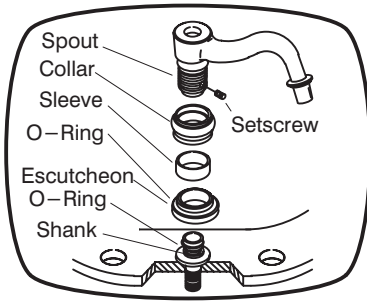
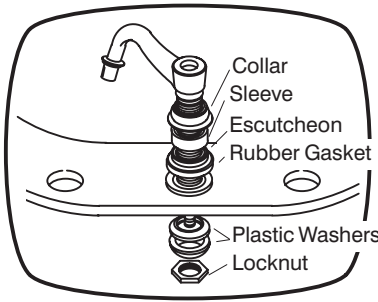
2 CROSS TWO-HANDLE FAUCET: Unscrew end caps with washers from each of the handle arms. Remove and replace sleeves. Screw on end caps with washers.



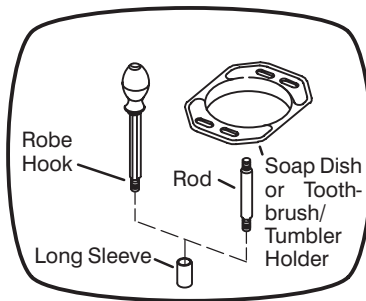
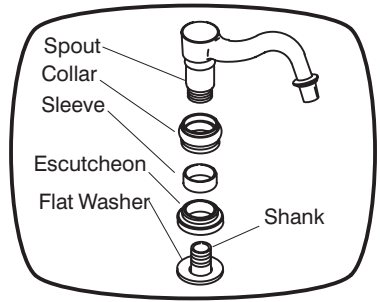
3 LEVER RITE-TEMP FAUCET: With valve in extreme counter-clockwise position, unscrew end cap and remove short sleeve, handle, and long sleeve. Remove skirt cap. Remove screw and remove skirt, washer, sleeve, and spring. Place spring inside new insert. Align sleeve onto centering washer. Reassemble handle with new short and long sleeves.



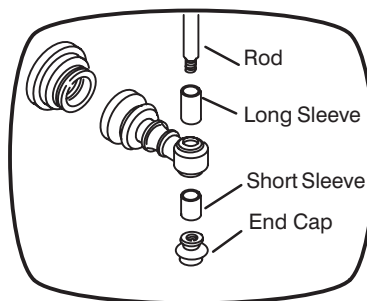
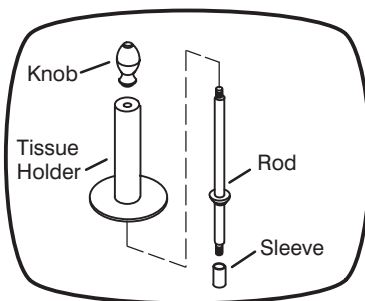
5 LAVATORY SPOUT: From under lavatory, loosen and remove locknut, friction washer, and rubber washer. Flexible hoses can remain attached. Unthread and remove brass tee and fiber washer from spout shank. Loosen and remove locknut and plastic washers. Lift spout out of lav and slip off rubber gasket, escutcheon, and sleeve. Install new sleeve and complete reassembly.



6 BATH SPOUTS: SLIP FIT SPOUT: Loosen setscrew and remove spout assembly from shank. Slip escutcheon off spout. Remove sleeve and replace with new sleeve. Replace escutcheon and complete reassembly. THREADED SPOUT: Rotate spout to loosen from shank. Unthread and remove spout. Remove flat washer, spout escutcheon, and sleeve. Install new sleeve and complete reassembly. Adjust locknut under the deck if necessary to align spout correctly.



8 ACCESSORIES: Unscrew end cap and remove accessory.



9 Remove sleeves from accessory. Remove skirt cap and unthread screw. Slide off skirt, gasket, and sleeve. Install new sleeves and complete reassembly.

