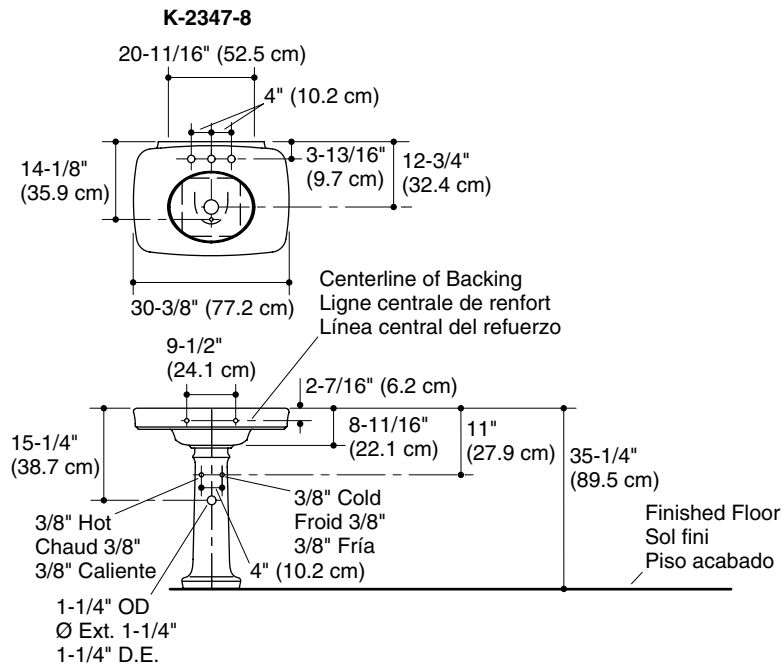
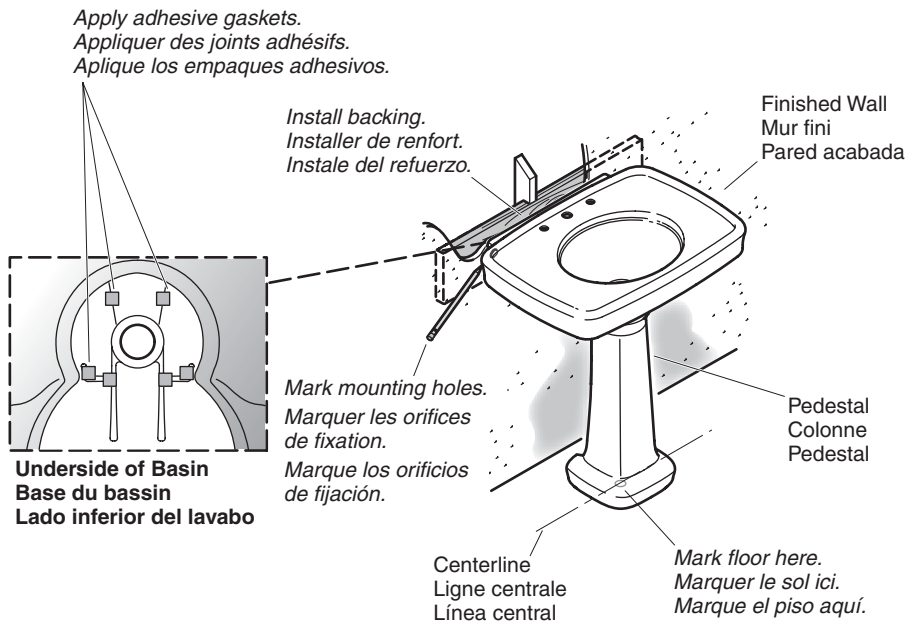


Roughing-In/Plan de raccordement/Diagrama de instalación



1. Preparation



- ☐ Install sufficient backing behind the finished wall to provide adequate support to secure the mounting hardware.
- ☐ Install the water supplies and drain piping according to the roughing-in information. Ensure the supply stop handles will not make contact with the pedestal when the supplies are fully open.
- ☐ Apply six self-adhesive gaskets (provided) to the underside of the basin.
- ☐ Mark the centerline location on the floor; refer to the "Roughing-In" section.
- ☐ Position the pedestal on the marked centerline.

IMPORTANT! The lavatory basin **must** be supported by the pedestal.

- ☐ Carefully lift the basin and position it on the pedestal.
- ☐ Verify the basin is properly supported by the pedestal.
- ☐ Slowly move the pedestal as needed until the basin is positioned against the wall at the installation location.
- ☐ Level the basin by adding additional self-adhesive gaskets as needed.

CAUTION: Risk of personal injury or product damage. Product can break, chip, or cause injury if handled carelessly. Have someone hold the basin while you mark the mounting hole locations.

- ☐ Locate the two basin mounting holes; mark their locations onto the wall.
- ☐ Mark the pedestal hole location onto the floor.
- ☐ Carefully remove the basin from the pedestal and remove both the basin and pedestal from the installation area.