

### Features

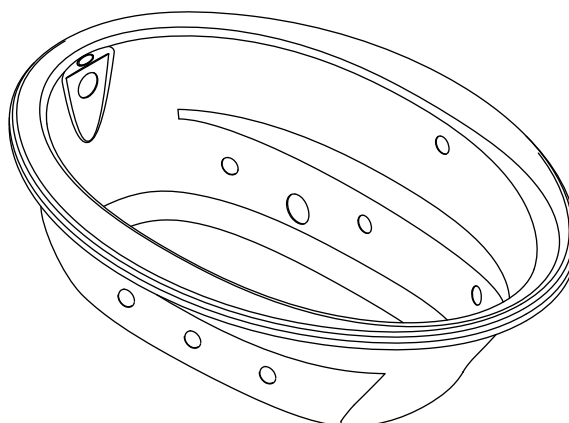
- *ExoCrylic™*
- *Oval shape*
- *Drop-in installation*
- *Six individually adjustable ProFlex® hydro-massage jets*
- *Pump with air switch and grounding-type plug-in cord*
- *In-line heater*
- *Molded lumbar support and armrests for comfort*
- *Optional K-9696 whirlpool trim kit in additional finishes*
- *60" (1524 mm) x 42" (1067 mm) x 20" (508 mm)*

### Codes/Standards Applicable

Specified model meets or exceeds the following:

- *ASME A112.19.7/CSA B45.10*
- *CSA B45.5/IAPMO Z124*
- *UL 1795*

### WHIRLPOOL BATH WITH HEATER K-1162-S1H



### Colors/Finishes

- 0: White
- Other: Refer to Price Book for additional colors/finishes

### Accessories

- CP: Polished Chrome
- PB: Vibrant® Polished Brass
- Other: Refer to Price Book for additional colors/finishes

### Specified Model

Model	Description	Colors/Finishes		
K-1162-S1H	Whirlpool bath with heater	<input type="checkbox"/> 0	<input type="checkbox"/> Other_____	
<b>Recommended Accessories</b>				
K-7213	Clearflo bath cable drain with PVC tubing	<input type="checkbox"/> CP	<input type="checkbox"/> PB	<input type="checkbox"/> Other_____
K-7214	Clearflo bath cable drain without PVC tubing	<input type="checkbox"/> CP	<input type="checkbox"/> PB	<input type="checkbox"/> Other_____
K-11677	Adjustable trip lever drain	<input type="checkbox"/> CP	<input type="checkbox"/> PB	
<b>Optional Accessories</b>				
K-9696	Jet trim kit (metal finishes)	<input type="checkbox"/> CP	<input type="checkbox"/> PB	<input type="checkbox"/> Other_____

### Product Specification

The ExoCrylic whirlpool bath shall be 60" (1524 mm) in length, 42" (1067 mm) in width, and 20" (508 mm) in height. Whirlpool shall be oval shaped and for drop-in installation. Whirlpool shall have six individually adjustable ProFlex hydro-massage jets, pump with air switch and grounding-type plug-in cord, and in-line heater. Whirlpool shall have molded lumbar support and armrests. Whirlpool shall feature optional K-9696 whirlpool trim kit in additional finishes. Whirlpool bath shall be Kohler Model K-1162-S1H-\_\_\_\_\_.

# SUNWARD®

## Technical Information

Fixture*:	
Bathing well:	
Basin area, bottom	43" (1092 mm) x 21-9/16" (548 mm)
Basin area, top	53-1/2" (1359 mm) x 32-1/8" (816 mm)
Weight	110 lbs (50 kg)
To overflow:	
Water depth	15" (381 mm)
Capacity	57 gal (215.9 L)
* Approximate measurements for comparison only.	

Included components:	
Cutout template	1042556-7

Pump:		V	Hz	A
1-speed		120	60	7.5
Heater:	kW	V	Hz	A
	1.5	120	60	12.5

## Required Electrical Service

Two dedicated circuits are required, each protected with a Class A Ground-Fault Circuit-Interrupter (GFCI):

Pump/control	120 V, 15 A, 60 Hz
Heater	120 V, 15 A, 60 Hz

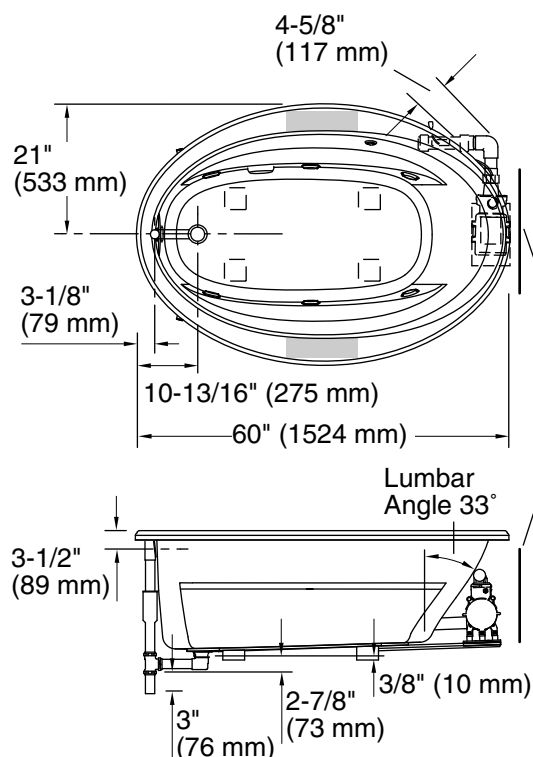
Locate the outlets behind the whirlpool and within 24" (610 mm) of the pump and heater.

## Installation Notes

Install this product according to the installation guide.

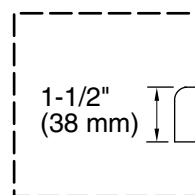
Floor support under whirlpool must provide for a minimum of 35 lbs/square foot (170 kg/square meter) loading.

The suction line extends 4-5/8" (117 mm) beyond the edge of the rim. The pump base extends 1/8" (33 mm) beyond the edge of the rim. Modify the framing as needed.



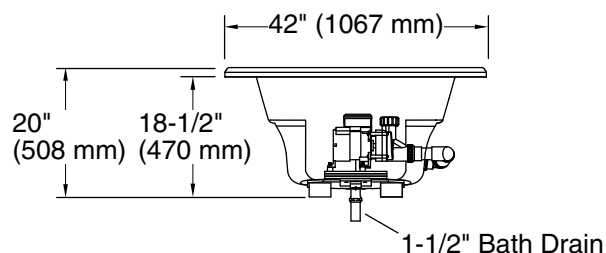
No change in measurements if connected with drain illustrated. (K-11677)

Recommended faucet area



Drop-In Rim Detail

Pump/Control Access  
20" (508 mm) W x 15" (381 mm) H



## Product Diagram