

# KOHLER®

## Roughing-In

K-1107, K-1107-L, K-1107-R  
**PROFLEX® 6032**  
**BATH**

### Product Information

Applicable product:	
Bath – drop-in (shown)	K-1107
Bath – tile flange, left drain	K-1107-L
Bath – tile flange, right drain	K-1107-R
Product is ADA compliant when installed with seat at head end. <b>ADA</b>	
Fixture*:	
Basin area:	
Basin area, bottom	46" (116.8 cm) x 20" (50.8 cm)
Basin area, top	55" (139.7 cm) x 22" (55.9 cm)
Weight	38 lbs (17.2 kg)
To overflow:	
Water depth	12-1/2" (31.8 cm)
Capacity	49 gal (185.5 L)
* Approximate measurements for comparison only.	
Recommended accessories:	
Swiftflo™ bath drain	K-11677
Optional accessories:	
Removable apron	K-1284
Pillow	K-1491

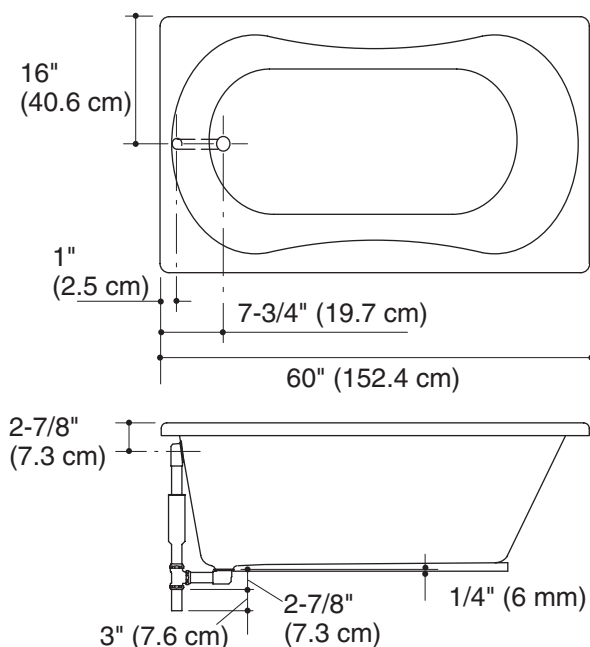
### Installation Notes

Install this product according to the installation guide.

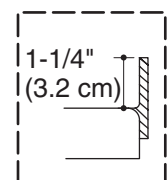
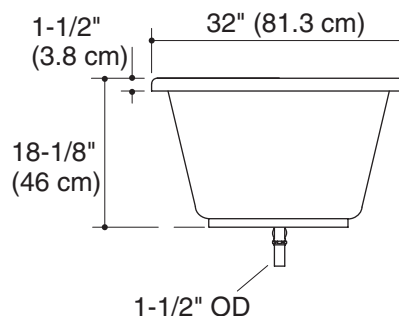
Floor support under bath must provide for a minimum of 36 lbs/square foot (177 kg/square meter) loading.

The apron must be installed before the finished floor and wall materials are installed.

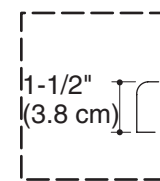
Fixture conforms to ANSI Standard Z124.1.2. All dimensions are nominal.



No change in measurements if connected with drain illustrated. (K-11677 or K-11677M)



**Tile Flange Detail**



**Drop-in Rim Detail**