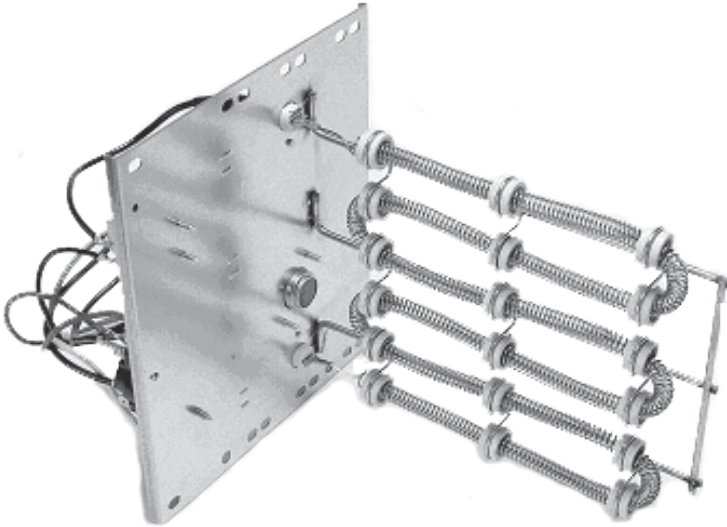




Air Conditioning & Heating

HKR SERIES

ELECTRIC HEAT KITS FOR AIR HANDLERS AND PACKAGED ELECTRIC UNITS



Standard Features

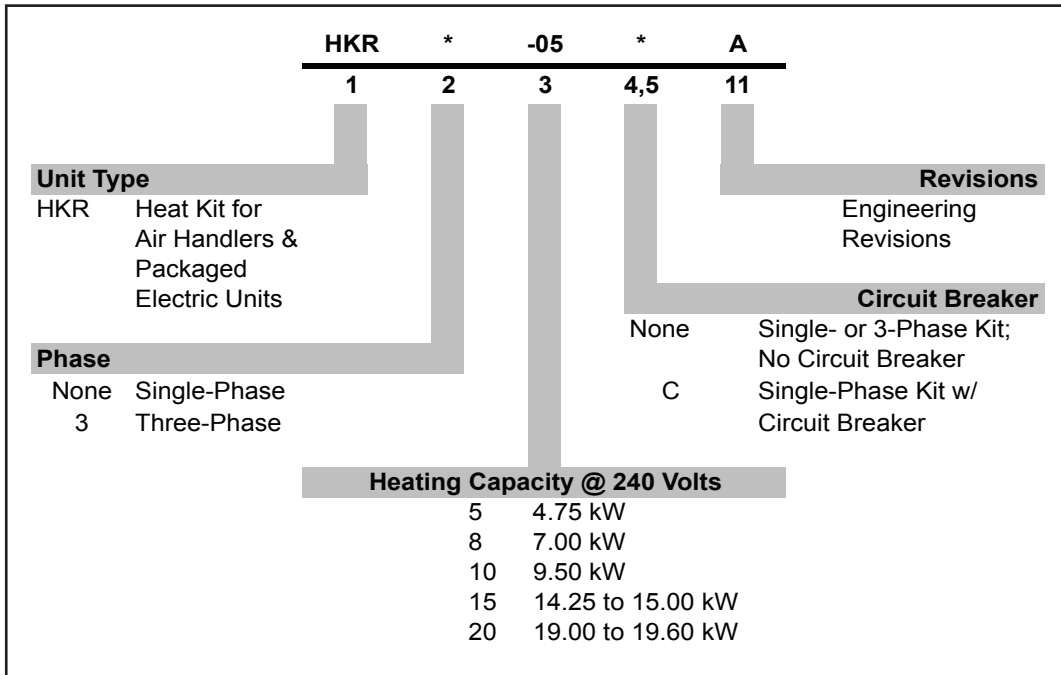
- Sequencers for better temperature control
- Multiple branch circuit capability
- Completely assembled and tested
- Control circuitry arranged to readily permit staging
- Factory-installed circuit breakers available on specific models (See Electrical Data)
- Fuse link secondary high-temperature limit control
- Plug-in wiring harness for ease of installation into air handler
- Rust-resistant nickel chromium heat elements
- ETL Listed



* Complete warranty details available from your local dealer or at www.goodmanmfg.com.



NOMENCLATURE



HEATING kW CORRECTION FACTOR

SUPPLY VOLTAGE	240	230	220	210	208
CORRECTION FACTOR	1.00	0.92	0.84	0.77	0.75

Multiply the 240-volt heating capacity by correction factors.

AIR HANDLER ELECTRICAL DATA — AVPTC

AIR HANDLER MODEL	MOTOR		VOLTS-HERTZ-PHASE	HEATER KIT	CIRCUIT 1			CIRCUIT 2		
	AMP+	HP			HEATER AMPS	MCA ¹	MOP ²	HEATER AMPS	MCA ¹	MOP ²
AVPTC183014AA	3.9	1/2	208/240-60-1	-----	0/0	4.9/4.9	15/15	-----	-----	-----
				HKR-03*	10.8/12.5	18/21	20/25	-----	-----	-----
				HKR-05*/-05C*	17.2/19.8	26/30	30/30	-----	-----	-----
				HKR-06*	21.7/25.0	32/36	35/40	-----	-----	-----
				HKR-08*/-08C*	25.3/29.2	37/41	40/45	-----	-----	-----
				HKR-10*/-10C*	34.3/39.6	48/54	50/60	-----	-----	-----
AVPTC313714AA	5.2	3/4	208/240-60-1	-----	0/0	6.5/6.5	15/15	-----	-----	-----
				HKR03*	10.8/12.5	20/22	25/25	-----	-----	-----
				HKR-05*/05C*	17.2/19.8	28/31	30/35	-----	-----	-----
				HKR-06*	21.7/25.0	34/38	35/40	-----	-----	-----
				HKR-08*/08C*	25.3/29.2	38/43	40/45	-----	-----	-----
				HKR-10*/10C*	34.3/39.6	49/56	50/60	-----	-----	-----
AVPTC426014AA	6.9	1	208/240-60-1	-----	0/0	8.6/8.6	15/15	-----	-----	-----
				HKR-03*	10.8/12.5	22/24	25/25	-----	-----	-----
				HKR-05*/-05C*	17.2/19.8	30/33	35/35	-----	-----	-----
				HKR-06*	21.7/25.0	36/40	40/40	-----	-----	-----
				HKR-08*/-08C*	25/29.2	40/45	45/50	-----	-----	-----
				HKR-10*/-10C*	34.3/39.6	52/58	60/60	-----	-----	-----
				HKR-15C*	34.3/39.6	52/58	60/60	17.2/19.8	21/25	25/25
				HKR-20C*	34.3/39.6	52/58	60/60	34.3/39.6	43/50	45/50
HKR-21C*	37.9/43.8	56/65	60/70	37.9/43.8	48/55	50/60				

¹ Minimum Circuit Ampacity @ 208 / 240 V

² Maximum Overcurrent Protection Device @ 208 / 240 V

* Revision level that may or may not be designated

C Circuit breaker option

^ Heat Kit requires three-phase power supply

Note: All HKR ampacities noted above include air handler motor amps, excluding three-phase models.

AIR HANDLER ELECTRICAL DATA — ARPF

AIR HANDLER MODEL	MOTOR		VOLTS-HERTZ-PHASE	HEATER KIT	CIRCUIT 1			CIRCUIT 2		
	AMP+	HP			HEATER AMPS	MCA ¹	MOP ²	HEATER AMPS	MCA ¹	MOP ²
ARPF182416AA ARPF182416BA	1.7	1/3	208/240-60-1	-----	0/0	2.1/2.1	15/15	----	----	----
				HKR-03*	10.8/12.5	16/18	20/20	----	----	----
				HKR-05*/-05C*	17.1/19.8	24/27	30/30	----	----	----
				HKR-06*	21.6/25.0	30/34	40/40	----	----	----
				HKR-08*/-08C*	25.2/29.1	34/39	40/40	----	----	----
				HKR-10*/-10C*	34.3/39.6	45/52	60/60	----	----	----
				HKR-15C*	34.3/39.6	45/52	60/60	17.1/19.8	22/25	30/30
ARPF182416CA	1.9	1/3	208/240-60-1	-----	0/0	2.4/2.4	15/15	----	----	----
				HKR-03*	10.8/12.5	16/18	20/20	----	----	----
				HKR-05*/-05C*	17.2/19.8	24/27	25/30	----	----	----
				HKR-06*	21.7/25.0	29/34	30/35	----	----	----
				HKR-08*/-08C*	25.3/29.2	34/39	35/40	----	----	----
				HKR-10*/-10C*	34.3/39.6	45/52	50/60	----	----	----
				HKR-15C*	34.3/39.6	45/52	50/60	17.2/19.8	21/25	25/25
ARPF193116AA ARPF193116BA	1.48	1/4	208/240-60-1	-----	0/0	1.9/1.9	15/15	----	----	----
				HKR-03*	10.8/12.5	15/17	20/20	----	----	----
				HKR-05*/-05C*	17.1/19.8	23/27	30/30	----	----	----
				HKR-06*	21.6/25.0	29/33	40/40	----	----	----
				HKR-08*/-08C*	25.2/29.1	33/38	40/40	----	----	----
				HKR-10*/-10C*	34.3/39.6	45/51	60/60	----	----	----
				HKR-15C*	34.3/39.6	45/51	60/60	17.1/19.8	22/25	30/30
ARPF303016AA ARPF303016BA	2.64	1/3	208/240-60-1	-----	0/0	3.3/3.3	15/15	----	----	----
				HKR-03*	10.8/12.5	17/19	20/20	----	----	----
				HKR-05*/-05C*	17.1/19.8	25/28	30/30	----	----	----
				HKR-06*	21.6/25.0	30/35	40/40	----	----	----
				HKR-08*/-08C*	25.2/29.1	35/40	40/40	----	----	----
				HKR-10*/-10C*	34.3/39.6	46/53	60/60	----	----	----
				HKR-15C*	34.3/39.6	46/53	60/60	17.1/19.8	22/25	30/30
				HKR-20C*	34.3/39.6	46/53	60/60	34.3/39.6	43/49	60/60
				HKR-21C*	37.9/43.8	51/58	60/60	37.9/43.8	48/55	60/60
				^HKR3-15*	0/0	3.3/3.3	15/15	31.2/36.1	39/45	60/60
				^HKR3-20*	0/0	3.3/3.3	15/15	40.6/46.9	51/59	60/60
ARPF303016CA	2.64	1/3	208/240-60-1	-----	0/0	3.3/3.3	15/15	----	----	----
				HKR-03*	10.8/12.5	17/19	20/20	----	----	----
				HKR-05*/-05C*	17.2/19.8	25/28	25/30	----	----	----
				HKR-06*	21.7/25.0	30/35	35/35	----	----	----
				HKR-08*/-08C*	25.3/29.2	35/40	35/40	----	----	----
				HKR-10*/-10C*	34.3/39.6	46/53	50/60	----	----	----
				15 HKR-15C*	34.3/39.6	46/53	50/60	17.2/19.8	21/25	25/25
				16 HKR-20C*	34.3/39.6	46/53	50/60	34.3/39.6	47/49	45/50
				17 HKR-21C*	37.9/43.8	51/58	60/60	37.9/43.8	48/55	50/60
				18 ^HKR3-15*	0/0	3.3/3.3	15/15	31.3/36.1	39/45	40/50
				19 ^HKR3-20*	0/0	3.3/3.3	15/15	40.7/46.9	51/59	60/60
ARPF363616AA ARPF363616BA	2.64	1/3	208/240-60-1	-----	0/0	3.3/3.3	15/15	----	----	----
				HKR-03*	10.8/12.5	17/19	20/20	----	----	----
				HKR-05*/-05C*	17.1/19.8	25/28	30/30	----	----	----
				HKR-06*	21.6/25.0	30/35	40/40	----	----	----
				HKR-08*/-08C*	25.2/29.1	35/40	40/40	----	----	----
				HKR-10*/-10C*	34.3/39.6	46/53	60/60	----	----	----
				HKR-15C*	34.3/39.6	46/53	60/60	17.1/19.8	22/25	30/30
^HKR3-15*	0/0	3.3/3.3	15/15	31.2/36.1	39/45	60/60				

See Notes on Page 3.

AIR HANDLER ELECTRICAL DATA — ARPF (CONT.)

AIR HANDLER MODEL	MOTOR		VOLTS-HERTZ-PHASE	HEATER KIT	CIRCUIT 1			CIRCUIT 2		
	AMP+	HP			HEATER AMPS	MCA ¹	MOP ²	HEATER AMPS	MCA ¹	MOP ²
ARPF364216AA	2.95	1/2	208/240-60-1	-----	0/0	3.7/3.7	15/15	----	----	----
ARPF364216AB				HKR-03*	10.8/12.5	17/19	20/20	----	----	----
ARPF364216AC				HKR-05*/-05C*	17.1/19.8	25/28	30/30	----	----	----
ARPF364216BA				HKR-06*	21.6/25.0	31/35	40/40	----	----	----
				HKR-08*/-08C*	25.2/29.1	35/40	40/40	----	----	----
				HKR-10*/-10C*	34.3/39.6	47/53	60/60	----	----	----
				HKR-15C*	34.3/39.6	47/53	60/60	17.1/19.8	22/25	30/30
				HKR-20C*	34.3/39.6	47/53	60/60	34.3/39.6	43/49	60/60
				HKR-21C*	37.9/43.8	51/58	60/60	37.9/43.8	48/55	60/60
				^HKR3-15*	0/0	3.7/3.7	15/15	31.2/36.1	39/45	60/60
	^HKR3-20*	0/0	3.7/3.7	15/15	40.6/46.9	51/59	60/60			
ARPF364216CA	3.12	1/2	208/240-60-1	-----	0/0	3.9/3.9	15/15	----	----	----
				HKR-03*	10.8/12.5	17/20	20/20	----	----	----
				HKR-05*/-05C*	17.2/19.8	25/29	30/30	----	----	----
				HKR-06*	21.7/25.0	31/35	35/40	----	----	----
				HKR-08*/-08C*	25.3/29.2	36/40	40/45	----	----	----
				HKR-10*/-10C*	34.3/39.6	47/53	50/60	----	----	----
				HKR-15C*	34.3/39.6	47/53	50/60	17.2/19.8	21/25	25/25
				HKR-20C*	34.3/39.6	47/53	50/60	34.3/39.6	43/49	45/50
				HKR-21C*	37.9/43.8	51/59	60/60	37.9/43.8	47/55	50/60
				^HKR3-15*	0/0	3.9/3.9	15/15	31.3/36.1	39/45	40/50
	^HKR3-20*	0/0	3.9/3.9	15/15	40.7/46.9	51/59	60/60			
ARPF374316AA	3.39	1/2	208/240-60-1	-----	0/0	4.2/4.2	15/15	----	----	----
ARPF374316 BA				HKR-03*	10.8/12.5	18/20	20/20	----	----	----
				HKR-05*/-05C*	17.1/19.8	26/29	30/30	----	----	----
				HKR-06*	21.6/25.0	31/35	40/40	----	----	----
				HKR-08*/-08C*	25.2/29.1	36/41	40/40	----	----	----
				HKR-10*/-10C*	34.3/39.6	47/54	60/60	----	----	----
				HKR-15C*	34.3/39.6	47/54	60/60	17.1/19.8	22/25	30/30
				HKR-20C*	34.3/39.6	47/54	60/60	34.3/39.6	43/49	60/60
				HKR-21C*	37.9/43.8	52/59	60/60	37.9/43.8	48/55	60/60
				^HKR3-15*	0/0	4.2/4.2	15/15	31.2/36.1	39/45	60/60
	^HKR3-20*	0/0	4.2/4.2	15/15	40.6/46.9	51/59	60/60			
ARPF374316CA	3.39	1/2	208/240-60-1	-----	0/0	4.2/4.2	15/15	----	----	----
				HKR-03*	10.8/12.5	18/20	20/20	----	----	----
				HKR-05*/-05C*	17.2/19.8	26/29	30/30	----	----	----
				HKR-06*	21.7/25.0	31/35	35/40	----	----	----
				HKR-08*/-08C*	25.3/29.2	36/41	40/45	----	----	----
				HKR-10*/-10C*	34.3/39.6	47/54	50/60	----	----	----
				HKR-15C*	34.3/39.6	47/54	50/60	17.2/19.8	21/25	25/25
				HKR-20C*	34.3/39.6	47/54	50/60	34.3/39.6	43/49	45/50
				HKR-21C*	37.9/43.8	52/59	60/60	37.9/43.8	47/55	50/60
				^HKR3-15*	0/0	4.2/4.2	15/15	31.3/36.1	39/45	40/50
	^HKR3-20*	0/0	4.2/4.2	15/15	40.7/46.9	51/59	60/60			

See Notes on Page 7.

AIR HANDLER ELECTRICAL DATA — ARPF (CONT.)

AIR HANDLER MODEL	MOTOR		VOLTS-HERTZ-PHASE	HEATER KIT	CIRCUIT 1			CIRCUIT 2		
	AMP+	HP			HEATER AMPS	MCA ¹	MOP ²	HEATER AMPS	MCA ¹	MOP ²
ARPF486016AA ARPF486016AB ARPF486016BA	4.3	3/4	208/240-60-1	-----	0/0	5.4/5.4	15/15	----	----	----
				HKR-03*	10.8/12.5	19/21	20/20	----	----	----
				HKR-05*/-05C*	17.1/19.8	27/30	30/30	----	----	----
				HKR-06*	21.6/25.0	32/37	40/40	----	----	----
				HKR-08*/-08C*	25.2/29.1	37/39	40/40	----	----	----
				HKR-10*/-10C*	34.3/39.6	48/55	60/60	----	----	----
				HKR-15C*	34.3/39.6	48/55	60/60	17.1/19.8	22/25	30/30
				HKR-20C*	34.3/39.6	48/55	60/60	34.3/39.6	43/49	60/60
				HKR-21C*	37.9/43.8	53/59	60/60	37.9/43.8	48/55	60/60
				^HKR3-15*	0/0	5.4/5.4	15/15	31.2/36.1	39/45	60/60
^HKR3-20*	0/0	5.4/5.4	15/15	40.6/46.9	51/59	60/60				
ARPF486016CA	4.06	3/4	208/240-60-1	-----	0/0	5.1/5.1	15/15	----	----	----
				HKR-03*	10.8/12.5	19/21	20/25	----	----	----
				HKR-05*/-05C*	17.2/19.8	27/30	30/30	----	----	----
				HKR-06*	21.7/25	32/36	35/40	----	----	----
				HKR-08*/-08C*	25.3/29.2	37/42	40/45	----	----	----
				HKR-10*/-10C*	34.3/39.6	48/55	50/60	----	----	----
				HKR-15C*	34.3/39.6	48/55	50/60	17.2/19.8	21/25	25/25
				HKR-20C*	34.3/39.6	48/55	50/60	34.3/39.6	43/49	45/50
				HKR-21C*	37.9/43.8	52/60	60/60	37.9/43.8	47/55	50/60
				^HKR3-15*	0/0	5.1/5.1	15/15	31.3/36.1	39/45	40/50
^HKR3-20*	0/0	5.1/5.1	15/15	40.7/46.9	51/59	60/60				
ARPF496116AA	4.3	3/4	208/240-60-1	-----	0/0	5.4/5.4	15/15	----	----	----
				HKR-03*	10.8/12.5	19/21	20/20	----	----	----
				HKR-05*/-05C*	17.1/19.8	27/30	30/30	----	----	----
				HKR-06*	21.6/25.0	32/37	40/40	----	----	----
				HKR-08*/-08C*	25.2/29.1	37/39	40/40	----	----	----
				HKR-10*/-10C*	34.3/39.6	48/55	60/60	----	----	----
				HKR-15C*	34.3/39.6	48/55	60/60	17.1/19.8	22/25	30/30
				HKR-20C*	34.3/39.6	48/55	60/60	34.3/39.6	43/49	60/60
				HKR-21C*	37.9/43.8	53/59	60/60	37.9/43.8	48/55	60/60
				^HKR3-15*	0/0	5.4/5.4	15/15	31.2/36.1	39/45	60/60
^HKR3-20*	0/0	5.4/5.4	15/15	40.6/46.9	51/59	60/60				
ARPF496116CA	4.06	3/4	208/240-60-1	-----	0/0	5.1/5.1	15/15	----	----	----
				HKR-03*	10.8/12.5	19/21	20/25	----	----	----
				HKR-05*/-05C*	17.2/19.8	27/30	30/30	----	----	----
				HKR-06*	21.7/25.0	32/36	35/40	----	----	----
				HKR-08*/-08C*	25.3/29.2	37/42	40/45	----	----	----
				HKR-10*/-10C*	34.3/39.6	48/55	50/60	----	----	----
				HKR-15C*	34.3/39.6	48/55	50/60	17.2/19.8	21/25	25/25
				HKR-20C*	34.3/39.6	48/55	50/60	34.3/39.6	43/49	45/50
				HKR-21C*	37.9/43.8	52/60	60/60	37.9/43.8	47/55	50/60
				HKR3-15*	0/0	5.1/5.1	15/15	31.3/36.1	39/45	40/50
HKR3-20*	0/0	5.1/5.1	15/15	40.7/46.9	51/59	60/60				

¹ Minimum Circuit Ampacity @ 208 / 240 V

² Maximum Overcurrent Protection Device @ 208 / 240 V

* Revision level that may or may not be designated

C Circuit breaker option

^ Heat Kit requires three-phase power supply

Note: All HKR ampacities noted above include air handler motor amps, excluding three-phase models.

AIR HANDLER ELECTRICAL DATA — ARUF

AIR HANDLER MODEL	MOTOR		VOLTS-HERTZ-PHASE	HEATER KIT	CIRCUIT 1			CIRCUIT 2		
	AMP+	HP			HEATER AMPS	MCA ¹	MOP ²	HEATER AMPS	MCA ¹	MOP ²
ARUF172916AA ARUF172916BA	1.7	1/3	208/240-60-1	----- HKR-03* HKR-05*/-05C* HKR-06* HKR-08*/-08C* HKR-10*/-10C* HKR-15C*	0/0 10.8/12.5 17.1/19.8 21.6/25.0 25.2/29.1 34.3/39.6 34.3/39.6	2.1/2.1 16/18 24/27 30/34 34/39 45/52 45/52	15/15 20/20 30/30 40/40 40/40 60/60 60/60	----- ----- ----- ----- ----- ----- 17.1/19.8	----- ----- ----- ----- ----- ----- 22/25	----- ----- ----- ----- ----- ----- 30/30
ARUF182416AA ARUF182416BA	1.7	1/3	208/240-60-1	----- HKR-03* HKR-05*/-05C* HKR-06* HKR-08*/-08C* HKR-10*/-10C* HKR-15C*	0/0 10.8/12.5 17.1/19.8 21.6/25.0 25.2/29.1 34.3/39.6 34.3/39.6	2.1/2.1 16/18 24/27 30/34 34/39 45/52 45/52	15/15 20/20 30/30 40/40 40/40 60/60 60/60	----- ----- ----- ----- ----- ----- 17.1/19.8	----- ----- ----- ----- ----- ----- 22/25	----- ----- ----- ----- ----- ----- 30/30
ARUF182416CA	1.9	1/3	208/240-60-1	----- HKR-03* HKR-05*/-05C* HKR-06* HKR-08*/-08C* HKR-10*/-10C* HKR-15C*	0/0 10.8/12.5 17.2/19.8 21.7/25.0 25.3/29.2 34.3/39.6 34.3/39.6	2.4/2.4 16/18 24/27 29/34 34/39 45/52 45/52	15/15 20/20 25/30 30/35 35/40 50/60 50/60	----- ----- ----- ----- ----- ----- 17.2/19.8	----- ----- ----- ----- ----- ----- 21/25	----- ----- ----- ----- ----- ----- 25/25
ARUF193116AA ARUF193116BA	1.48	1/4	208/240-60-1	----- HKR-03* HKR-05*/-05C* HKR-06* HKR-08*/-08C* HKR-10*/-10C* HKR-15C*	0/0 10.8/12.5 17.1/19.8 21.6/25.0 25.2/29.1 34.3/39.6 34.3/39.6	1.9/1.9 15/17 23/27 29/33 33/38 45/51 45/51	15/15 20/20 30/30 40/40 40/40 60/60 60/60	----- ----- ----- ----- ----- ----- 17.1/19.8	----- ----- ----- ----- ----- ----- 22/25	----- ----- ----- ----- ----- ----- 30/30
ARUF303016AA ARUF303016BA	2.64	1/3	208/240-60-1	----- HKR-03* HKR-05*/-05C* HKR-06* HKR-08*/-08C* HKR-10*/-10C* HKR-15C* HKR-20C* HKR-21C* ^HKR3-15* ^HKR3-20*	0/0 10.8/12.5 17.1/19.8 21.6/25.0 25.2/29.1 34.3/39.6 34.3/39.6 34.3/39.6 37.9/43.8 0/0 0/0	3.3/3.3 17/19 25/28 30/35 35/40 46/53 46/53 46/53 51/58 3.3/3.3 3.3/3.3	15/15 20/20 30/30 40/40 40/40 60/60 60/60 60/60 60/60 15/15 15/15	----- ----- ----- ----- ----- ----- 17.1/19.8 34.3/39.6 37.9/43.8 31.2/36.1 40.6/46.9	----- ----- ----- ----- ----- ----- 22/25 43/49 48/55 39/45 51/59	----- ----- ----- ----- ----- ----- 30/30 60/60 60/60 60/60 60/60

See Notes on Page 7.

AIR HANDLER ELECTRICAL DATA — ARUF (CONT.)

AIR HANDLER MODEL	MOTOR		VOLTS-HERTZ-PHASE	HEATER KIT	CIRCUIT 1			CIRCUIT 2						
	AMP+	HP			HEATER AMPS	MCA ¹	MOP ²	HEATER AMPS	MCA ¹	MOP ²				
ARUF303016CA	2.64	1/3	208/240-60-1	-----	0/0	3.3/3.3	15/15	----	----	----				
				HKR-03*	10.8/12.5	17/19	20/20	----	----	----				
				HKR-05*/-05C*	17.2/19.8	25/28	25/30	----	----	----				
				HKR-06*	21.7/25.0	30/35	35/35	----	----	----				
				HKR-08*/-08C*	25.3/29.2	35/40	35/40	----	----	----				
				HKR-10*/-10C*	34.3/39.6	46/53	50/60	----	----	----				
				HKR-15C*	34.3/39.6	46/53	50/60	17.2/19.8	21/25	25/25				
				HKR-20C*	34.3/39.6	46/53	50/60	34.3/39.6	43/49	45/50				
				HKR-21C*	37.9/43.8	51/58	60/60	37.9/43.8	47/55	50/60				
				^HKR3-15*	0/0	3.3/3.3	15/15	31.3/36.1	39/45	40/50				
^HKR3-20*	0/0	3.3/3.3	15/15	40.7/46.9	51/59	60/60								
ARUF363616AA	2.64	1/3	208/240-60-1	-----	0/0	3.3/3.3	15/15	----	----	----				
				HKR-03*	10.8/12.5	17/19	20/20	----	----	----				
				HKR-05*/-05C*	17.1/19.8	25/28	30/30	----	----	----				
				HKR-06*	21.6/25.0	30/35	40/40	----	----	----				
				HKR-08*/-08C*	25.2/29.1	35/40	40/40	----	----	----				
				HKR-10*/-10C*	34.3/39.6	46/53	60/60	----	----	----				
				HKR-15C*	34.3/39.6	46/53	60/60	17.1/19.8	22/25	30/30				
				^HKR3-15*	0/0	3.3/3.3	15/15	31.2/36.1	39/45	60/60				
				ARUF363616BA	2.64	1/3	208/240-60-1	-----	0/0	3.3/3.3	15/15	----	----	----
								HKR-03*	10.8/12.5	17/19	20/20	----	----	----
HKR-05*/-05C*	17.1/19.8	25/28	30/30					----	----	----				
HKR-06*	21.6/25.0	30/35	40/40					----	----	----				
HKR-08*/-08C*	25.2/29.1	35/40	40/40					----	----	----				
HKR-10*/-10C*	34.3/39.6	46/53	60/60					----	----	----				
HKR-15C*	34.3/39.6	46/53	60/60					17.1/19.8	22/25	30/30				
^HKR3-15*	0/0	3.3/3.3	15/15					31.2/36.1	39/45	60/60				
ARUF364216AA ARUF364216AB ARUF364216AC	2.95	1/2	208/240-60-1					-----	0/0	3.7/3.7	15/15	----	----	----
								HKR-03*	10.8/12.5	17/19	20/20	----	----	----
				HKR-05*/-05C*	17.1/19.8	25/28	30/30	----	----	----				
				HKR-06*	21.6/25.0	31/35	40/40	----	----	----				
				HKR-08*/-08C*	25.2/29.1	35/40	40/40	----	----	----				
				HKR-10*/-10C*	34.3/39.6	47/53	60/60	----	----	----				
				HKR-15C*	34.3/39.6	47/53	60/60	17.1/19.8	22/25	30/30				
				HKR-20C*	34.3/39.6	47/53	60/60	34.3/39.6	43/49	60/60				
				HKR-21C*	37.9/43.8	51/58	60/60	37.9/43.8	48/55	60/60				
				^HKR3-15*	0/0	3.7/3.7	15/15	31.2/36.1	39/45	60/60				
^HKR3-20*	0/0	3.7/3.7	15/15	40.6/46.9	51/59	60/60								
ARUF364216BA	2.95	1/2	208/240-60-1	-----	0/0	3.7/3.7	15/15	----	----	----				
				HKR-03*	10.8/12.5	17/19	20/20	----	----	----				
				HKR-05*/-05C*	17.1/19.8	25/28	30/30	----	----	----				
				HKR-06*	21.6/25.0	31/35	40/40	----	----	----				
				HKR-08*/-08C*	25.2/29.1	35/40	40/40	----	----	----				
				HKR-10*/-10C*	34.3/39.6	47/53	60/60	----	----	----				
				HKR-15C*	34.3/39.6	47/53	60/60	17.1/19.8	22/25	30/30				
				HKR-20C*	34.3/39.6	47/53	60/60	34.3/39.6	43/49	60/60				
				HKR-21C*	37.9/43.8	51/58	60/60	37.9/43.8	48/55	60/60				
				^HKR3-15*	0/0	3.7/3.7	15/15	31.2/36.1	39/45	60/60				
^HKR3-20*	0/0	3.7/3.7	15/15	40.6/46.9	51/59	60/60								

See Notes on Page 11.

AIR HANDLER ELECTRICAL DATA — ARUF (CONT.)

AIR HANDLER MODEL	MOTOR		VOLTS-HERTZ-PHASE	HEATER KIT	CIRCUIT 1			CIRCUIT 2		
	AMP+	HP			HEATER AMPS	MCA ¹	MOP ²	HEATER AMPS	MCA ¹	MOP ²
ARUF364216CA	3.12	1/2	208/240-60-1	-----	0/0	3.7/3.9	15/15	----	----	----
				HKR-03*	10.8/12.5	17/20	20/20	----	----	----
				HKR-05*/-05C*	17.2/19.8	25/29	30/30	----	----	----
				HKR-06*	21.7/25.0	31/35	35/40	----	----	----
				HKR-08*/-08C*	25.3/29.2	35/40	40/45	----	----	----
				HKR-10*/-10C*	34.3/39.6	47/53	50/60	----	----	----
				HKR-15C*	34.3/39.6	47/53	50/60	17.1/19.8	21/25	25/25
				HKR-20C*	34.3/39.6	47/53	50/60	34.3/39.6	43/49	45/50
				HKR-21C*	37.9/43.8	51/59	60/60	37.9/43.8	47/55	50/60
				^HKR3-15*	0/0	3.7/3.9	15/15	31.3/36.1	39/45	40/50
^HKR3-20*	0/0	3.7/3.9	15/15	40.7/46.9	51/59	60/60				
ARUF374316AA ARUF374316BA	3.39	1/2	208/240-60-1	-----	0/0	4.2/4.2	15/15	----	----	----
				HKR-03*	10.8/12.5	18/20	20/20	----	----	----
				HKR-05*/-05C*	17.1/19.8	26/29	30/30	----	----	----
				HKR-06*	21.6/25.0	31/35	40/40	----	----	----
				HKR-08*/-08C*	25.2/29.1	36/41	40/40	----	----	----
				HKR-10*/-10C*	34.3/39.6	47/54	60/60	----	----	----
				HKR-15C*	34.3/39.6	47/54	60/60	17.1/19.8	22/25	30/30
				HKR-20C*	34.3/39.6	47/54	60/60	34.3/39.6	43/49	60/60
				HKR-21C*	37.9/43.8	52/59	60/60	37.9/43.8	48/55	60/60
				^HKR3-15*	0/0	4.2/4.2	15/15	31.2/36.1	39/45	60/60
^HKR3-20*	0/0	4.2/4.2	15/15	40.6/46.9	51/59	60/60				
ARUF374316CA	3.39	1/2	208/240-60-1	-----	0/0	4.2/4.2	15/15	----	----	----
				HKR-03*	10.8/12.5	18/20	20/20	----	----	----
				HKR-05*/-05C*	17.2/19.8	26/29	30/30	----	----	----
				HKR-06*	21.7/25.0	31/35	35/40	----	----	----
				HKR-08*/-08C*	25.3/29.2	36/41	40/45	----	----	----
				HKR-10*/-10C*	34.3/39.6	47/54	50/60	----	----	----
				HKR-15C*	34.3/39.6	47/54	50/60	17.2/19.8	21/25	25/25
				HKR-20C*	34.3/39.6	47/54	50/60	34.3/39.6	43/49	45/50
				HKR-21C*	37.9/43.8	52/59	60/60	37.9/43.8	47/55	50/60
				^HKR3-15*	0/0	4.2/4.2	15/15	31.3/36.1	39/45	60/60
^HKR3-20*	0/0	4.2/4.2	15/15	40.7/46.9	51/59	60/60				
ARUF486016AA ARUF486016AB ARUF486016BA	4.3	3/4	208/240-60-1	-----	0/0	5.4/5.4	15/15	----	----	----
				HKR-03*	10.8/12.5	19/21	20/20	----	----	----
				HKR-05*/-05C*	17.1/19.8	27/30	30/30	----	----	----
				HKR-06*	21.6/25.0	32/37	40/40	----	----	----
				HKR-08*/-08C*	25.2/29.1	37/39	40/40	----	----	----
				HKR-10*/-10C*	34.3/39.6	48/55	60/60	----	----	----
				HKR-15C*	34.3/39.6	48/55	60/60	17.1/19.8	22/25	30/30
				HKR-20C*	34.3/39.6	48/55	60/60	34.3/39.6	43/49	60/60
				HKR-21C*	37.9/43.8	53/59	60/60	37.9/43.8	48/55	60/60
				^HKR3-15*	0/0	5.4/5.4	15/15	31.2/36.1	39/45	60/60
^HKR3-20*	0/0	5.4/5.4	15/15	40.6/46.9	51/59	60/60				

See Notes on Page 11.

AIR HANDLER ELECTRICAL DATA — ARUF (CONT.)

AIR HANDLER MODEL	MOTOR		VOLTS-HERTZ-PHASE	HEATER KIT	CIRCUIT 1			CIRCUIT 2		
	AMP+	HP			HEATER AMPS	MCA ¹	MOP ²	HEATER AMPS	MCA ¹	MOP ²
ARUF486016CA	4.06	3/4	208/240-60-1	-----	0/0	5.1/5.1	15/15	----	----	----
				HKR-03*	10.8/12.5	19/21	20/25	----	----	----
				HKR-05*/-05C*	17.2/19.8	27/30	30/30	----	----	----
				HKR-06*	21.7/25	32/36	35/40	----	----	----
				HKR-08*/-08C*	25.3/29.2	37/42	40/45	----	----	----
				HKR-10*/-10C*	34.3/39.6	48/55	50/60	----	----	----
				HKR-15C*	34.3/39.6	48/55	50/60	17.2/19.8	21/25	25/25
				HKR-20C*	34.3/39.6	48/55	50/60	34.3/39.6	43/49	45/50
				HKR-21C*	37.9/43.8	52/60	60/60	37.9/43.8	47/55	50/60
^HKR3-15*	0/0	5.1/5.1	15/15	31.3/36.1	39/45	40/50				
ARUF496116AA	4.3	3/4	208/240-60-1	-----	0/0	5.4/5.4	15/15	----	----	----
				HKR-03*	10.8/12.5	19/21	20/20	----	----	----
				HKR-05*/-05C*	17.1/19.8	27/30	30/30	----	----	----
				HKR-06*	21.6/25.0	32/37	40/40	----	----	----
				HKR-08*/-08C*	25.2/29.1	37/39	40/40	----	----	----
				HKR-10*/-10C*	34.3/39.6	48/55	60/60	----	----	----
				HKR-15C*	34.3/39.6	48/55	60/60	17.1/19.8	22/25	30/30
				HKR-20C*	34.3/39.6	48/55	60/60	34.3/39.6	43/49	60/60
				HKR-21C*	37.9/43.8	53/59	60/60	37.9/43.8	48/55	60/60
				HKR3-15*	0/0	5.4/5.4	15/15	31.2/36.1	39/45	60/60
HKR3-20*	0/0	5.4/5.4	15/15	40.6/46.9	51/59	60/60				
ARUF496116CA	4.06	3/4	208/240-60-1	-----	0/0	5.1/5.1	15/15	----	----	----
				HKR-03*	10.8/12.5	19/21	20/25	----	----	----
				HKR-05*/-05C*	17.2/19.8	27/30	30/30	----	----	----
				HKR-06*	21.7/25.0	32/36	35/40	----	----	----
				HKR-08*/-08C*	25.3/29.2	37/42	40/45	----	----	----
				HKR-10*/-10C*	34.3/39.6	48/55	50/60	----	----	----
				HKR-15C*	34.3/39.6	48/55	50/60	17.2/19.8	21/25	25/25
				HKR-20C*	34.3/39.6	48/55	50/60	34.3/39.6	43/49	45/50
				HKR-21C*	37.9/43.8	52/60	60/60	37.9/43.8	47/55	50/60
				^HKR3-15*	0/0	5.1/5.1	15/15	31.3/36.1	39/45	40/50
^HKR3-20*	0/0	5.1/5.1	15/15	40.7/46.9	51/59	60/60				

¹ Minimum Circuit Ampacity @ 208 / 240 V

² Maximum Overcurrent Protection Device @ 208 / 240 V

* Revision level that may or may not be designated

C Circuit breaker option

^ Heat Kit requires three-phase power supply

Note: All HKR ampacities noted above include air handler motor amps, excluding three-phase models.

AIR HANDLER ELECTRICAL DATA — ADPF

AIR HANDLER MODEL	MOTOR		VOLTS-HERTZ-PHASE	HEATER KIT	CIRCUIT 1			CIRCUIT 2		
	AMP+	HP			HEATER AMPS	MCA ¹	MOP ²	HEATER AMPS	MCA ¹	MOP ²
ADPF182416AA ADPF182416BA	1.7	1/3	208/240-60-1	-----	0/0	2.1/2.1	15/15	-----	-----	-----
				HKR-03*	10.8/12.5	16/18	20/20	-----	-----	-----
				HKR-05*/-05C*	17.1/19.8	24/27	30/30	-----	-----	-----
				HKR-06*	21.6/25.0	30/34	40/40	-----	-----	-----
				HKR-08*/-08C*	25.2/29.1	34/39	40/40	-----	-----	-----
				HKR-10*/-10C*	34.3/39.6	45/52	60/60	-----	-----	-----
				HKR-15C*	34.3/39.6	45/52	60/60	17.1/19.8	22/25	30/30
ADPF182416CA	1.9	1/3	208/240-60-1	-----	0/0	2.4/2.4	15/15	-----	-----	-----
				HKR-03*	10.8/12.5	16/18	20/20	-----	-----	-----
				HKR-05*/-05C*	17.2/19.8	24/27	25/30	-----	-----	-----
				HKR-06*	21.7/25	29/34	30/35	-----	-----	-----
				HKR-08*/-08C*	25.3/29.2	34/39	35/40	-----	-----	-----
				HKR-10*/-10C*	34.3/39.6	45/52	50/60	-----	-----	-----
				HKR-15C*	34.3/39.6	45/52	50/60	17.2/19.8	21/25	25/25
ADPF304216AA ADPF304216AB ADPF304216AC ADPF304216BA	2.95	1/2	208/240-60-1	-----	0/0	3.7/3.7	15/15	-----	-----	-----
				HKR-03*	10.8/12.5	17/19	20/20	-----	-----	-----
				HKR-05*/-05C*	17.1/19.8	25/28	30/30	-----	-----	-----
				HKR-06*	21.6/25.0	31/35	40/40	-----	-----	-----
				HKR-08*/-08C*	25.2/29.1	35/40	40/40	-----	-----	-----
				HKR-10*/-10C*	34.3/39.6	47/53	60/60	-----	-----	-----
				HKR-15C*	34.3/39.6	47/53	60/60	17.1/19.8	22/25	30/30
				HKR-20C*	34.3/39.6	47/53	60/60	34.3/39.6	43/49	60/60
				HKR-21C*	37.9/43.8	51/58	60/60	37.9/43.8	48/55	60/60
				^HKR3-15*	0/0	3.7/3.7	15/15	31.2/36.1	39/45	60/60
				^HKR3-20*	0/0	3.7/3.7	15/15	40.6/46.9	51/59	60/60
ADPF304216CA	3.12	1/2	208/240-60-1	-----	0/0	3.9/3.9	15/15	-----	-----	-----
				HKR-03*	10.8/12.5	17/20	20/20	-----	-----	-----
				HKR-05*/-05C*	17.2/19.8	25/29	30/30	-----	-----	-----
				HKR-06*	21.7/25.0	31/35	35/40	-----	-----	-----
				HKR-08*/-08C*	25.3/29.2	36/40	40/45	-----	-----	-----
				HKR-10*/-10C*	34.3/39.6	47/53	50/60	-----	-----	-----
				HKR-15C*	34.3/39.6	47/53	50/60	17.1/19.8	22/25	25/25
				HKR-20C*	34.3/39.6	47/53	50/60	34.3/39.6	43/49	45/50
				HKR-21C*	37.9/43.8	51/59	60/60	37.9/43.8	48/55	50/60
				^HKR3-15*	0/0	3.9/3.9	15/15	31.3/36.1	39/45	40/50
				^HKR3-20*	0/0	3.9/3.9	15/15	40.7/46.9	51/59	60/60
ADPF486016AA ADPF486016AB ADPF486016BA	4.3	3/4	208/240-60-1	-----	0/0	5.4/5.4	15/15	-----	-----	-----
				HKR-03*	10.8/12.5	19/21	20/20	-----	-----	-----
				HKR-05*/-05C*	17.1/19.8	27/30	30/30	-----	-----	-----
				HKR-06*	21.6/25.0	32/37	40/40	-----	-----	-----
				HKR-08*/-08C*	25.2/29.1	37/39	40/40	-----	-----	-----
				HKR-10*/-10C*	34.3/39.6	48/55	60/60	-----	-----	-----
				HKR-15C*	34.3/39.6	48/55	60/60	17.1/19.8	22/25	30/30
				HKR-20C*	34.3/39.6	48/55	60/60	34.3/39.6	43/49	60/60
				HKR-21C*	37.9/43.8	53/59	60/60	37.9/43.8	48/55	60/60
				^HKR3-15*	0/0	5.4/5.4	15/15	31.2/36.1	39/45	60/60
				^HKR3-20*	0/0	5.4/5.4	15/15	40.6/46.9	51/59	60/60
ADPF486016CA	4.06	3/4	208/240-60-1	-----	0/0	5.1/5.1	15/15	-----	-----	-----
				HKR03*	10.8/12.5	17/21	20/25	-----	-----	-----
				HKR-05*/05C*	17.2/19.8	25/30	30/30	-----	-----	-----
				HKR-06*	21.7/25	30/36	35/40	-----	-----	-----
				HKR-08*/08C*	25.3/29.2	35/42	40/45	-----	-----	-----
				HKR-10*/10C*	34.3/39.6	46/55	50/60	-----	-----	-----
				HKR-15C*	34.3/39.6	46/55	50/60	17.2/19.8	21/25	25/25
				HKR-20C*	34.3/39.6	46/55	50/60	34.3/39.6	43/49	45/50
				HKR-21C*	37.9/43.8	51/60	60/60	37.9/43.8	47/55	50/60
				HKR3-15*	0/0	3.1/5.1	15/15	31.3/36.1	39/45	40/50
				HKR3-20*	0/0	3.1/5.1	15/15	40.7/46.9	51/59	60/60

See Notes on Page 11.

AIR HANDLER ELECTRICAL DATA — ASPF

AIR HANDLER MODEL	MOTOR		VOLTS-HERTZ-PHASE	HEATER KIT	CIRCUIT 1			CIRCUIT 2		
	AMP+	HP			HEATER AMPS	MCA ¹	MOP ²	HEATER AMPS	MCA ¹	MOP ²
ASPF183016AA ASPF183016BA	2.5	1/2	208/230-60-1	-----	0/0	3.1/3.1	15/15	-----	-----	-----
				HKR-03*	10.8/12.5	17/19	20/20	-----	-----	-----
				HKR-05*/-05C*	17.1/19.8	27/30	30/30	-----	-----	-----
				HKR-06*	21.6/25.0	32/37	40/40	-----	-----	-----
				HKR-08*/-08C*	25.3/29.2	37/39	40/40	-----	-----	-----
				HKR-10*/-10C*	34.3/39.6	48/55	60/60	-----	-----	-----
				HKR-15C*	34.3/39.6	46/53	60/60	17.2/19.8	21/25	30/30
				^HKR3-15*	0/0	3.1/3.1	15/15	31.2/36.1	39/45	60/60
ASPF183016CA		1/2	208/230-60-1	-----	0/0	3.1/3.1	15/15	-----	-----	-----
				HKR03*	10.8/12.5	17/19	20/25	-----	-----	-----
				HKR-05*/05C*	17.2/19.8	25/28	30/35	-----	-----	-----
				HKR-06*	21.7/25.0	30/34	35/40	-----	-----	-----
				HKR-08*/08C*	25.3/29.2	35/40	40/45	-----	-----	-----
				HKR-10*/10C*	34.3/39.6	46/53	50/60	-----	-----	-----
				HKR-15C*	34.3/39.6	46/53	50/60	17.2/19.8	21/25	25/25
				HKR3-15*	0/0	3.1/3.1	50/60	31.3/36.1	39/45	40/50
ASPF183016DA	2.9	1/2	208/230-60-1	-----	0/0	3.6/3.6	15/15	-----	-----	-----
				HKR-03*	10.8/12.5	17/19	20/20	-----	-----	-----
				HKR-05*/-05C*	17.2/19.8	25/28	30/30	-----	-----	-----
				HKR-06*	21.6/25.0	31/35	35/35	-----	-----	-----
				HKR-08*/-08C*	25.3/29.2	35/40	40/45	-----	-----	-----
				HKR-10*/-10C*	34.3/39.6	47/53	50/60	-----	-----	-----
				HKR-15C*	34.3/39.6	47/53	50/60	17.2/19.8	21/25	25/25
				HKR3-15*	0/0	3.6/3.6	15/15	31.2/36.1	39/45	40/50
ASPF303616AA ASPF303616BA	3.0	3/4	208/230-60-1	-----	0/0	3.8/3.8	15/15	-----	-----	-----
				HKR-03*	10.8/12.5	15/17	20/20	-----	-----	-----
				HKR-05*/-05C*	17.1/19.8	24/27	30/30	-----	-----	-----
				HKR-06*	21.6/25.0	32/37	40/40	-----	-----	-----
				HKR-08*/-08C*	25.3/29.2	35/40	40/40	-----	-----	-----
				HKR-10*/-10C*	34.3/39.6	48/55	60/60	-----	-----	-----
				HKR-15C*	34.3/39.6	46/53	60/60	17.2/19.8	21/25	30/30
				HKR-20C*	34.3/39.6	51/57	60/60	34.3/39.6	43/50	60/60
				HKR-21C*	37.9/43.8	54/60	60/60	37.9/43.8	48/55	60/60
				^HKR3-15*	0/0	3.8/3.8	15/15	31.2/36.1	39/45	60/60
				^HKR3-20*	0/0	3.8/3.8	15/15	40.6/46.9	51/59	60/60
ASPF313716AA	3.0	3/4	208/230-60-1	-----	0/0	3.3/3.8	15/15	-----	-----	-----
				HKR-03*	10.8/12.5	16/19	20/20	-----	-----	-----
				HKR-05*/-05C*	17.1/19.8	25/29	25/30	-----	-----	-----
				HKR-06*	21.6/25.0	30/35	35/40	-----	-----	-----
				HKR-08*/-08C*	25.3/29.2	35/40	35/45	-----	-----	-----
				HKR-10*/-10C*	34.3/39.6	46/53	50/60	-----	-----	-----
				HKR-15C*	34.3/39.6	46/53	60/60	17.2/19.8	21/25	30/30
				HKR-20C*	34.3/39.6	51/57	60/60	34.3/39.6	43/50	60/60
				HKR-21C*	37.9/43.8	54/60	60/60	37.9/43.8	48/55	60/60
				^HKR3-15*	0/0	3.8/3.8	15/15	31.2/36.1	39/45	60/60
				^HKR3-20*	0/0	3.8/3.8	15/15	40.6/46.9	51/59	60/60

See Notes on Page 11.

AIR HANDLER ELECTRICAL DATA — ASPF (CONT.)

AIR HANDLER MODEL	MOTOR		VOLTS-HERTZ-PHASE	HEATER KIT	CIRCUIT 1			CIRCUIT 2		
	AMP+	HP			HEATER AMPS	MCA ¹	MOP ²	HEATER AMPS	MCA ¹	MOP ²
ASPF313716DA	3.1	3/4	208/230-60-1	-----	0/0	3.9/3.9	15/15	-----	-----	-----
				HKR-03*	10.8/12.5	17/20	20/20	-----	-----	-----
				HKR-05*/-05C*	17.2/19.8	25/29	30/30	-----	-----	-----
				HKR-06*	21.6/25.0	31/35	35/40	-----	-----	-----
				HKR-08*/-08C*	25.3/29.2	35/40	40/45	-----	-----	-----
				HKR-10*/-10C*	34.3/39.6	47/53	50/60	-----	-----	-----
				HKR-15C*	34.3/39.6	47/53	50/60	17.2/19.8	21/25	25/25
				HKR-20C*	34.3/39.6	47/53	50/60	34.3/39.6	43/49	45/50
				HKR-21C*	37.9/43.8	51/59	60/60	37.9/43.8	47/55	50/60
				HKR3-15*	0/0	3.9/3.9	15/15	31.2/36.1	39/45	40/50
HKR3-20*	0/0	3.9/3.9	15/15	40.6/46.9	51/59	60/60				
ASPF426016AA ASPF426016BA	4.2	3/4	208/230-60-1	-----	0/0	5.3/5.3	15/15	-----	-----	-----
				HKR-03*	10.8/12.5	15/17	20/20	-----	-----	-----
				HKR-05*/-05C*	17.1/19.8	24/27	30/30	-----	-----	-----
				HKR-06*	21.6/25.0	32/37	40/40	-----	-----	-----
				HKR-08*/-08C*	25.3/29.2	35/40	40/40	-----	-----	-----
				HKR-10*/-10C*	34.3/39.6	46/53	60/60	-----	-----	-----
				HKR-15C*	34.3/39.6	51/57	60/60	17.2/19.8	21/25	30/30
				HKR-20C*	34.3/39.6	51/57	60/60	34.3/39.6	43/50	60/60
				HKR-21C*	37.9/43.8	54/60	60/60	37.9/43.8	48/55	60/60
				^HKR3-15*	0/0	5.3/5.3	15/15	31.2/36.1	39/45	60/60
^HKR3-20*	0/0	5.3/5.3	15/15	40.6/46.9	51/59	60/60				
ASPF426016CA		3/4	208/230-60-1	-----	0/0	5.3/5.3	15/15	-----	-----	-----
				HKR-03*	10.8/12.5	19/21	20/25	-----	-----	-----
				HKR-05*/-05C*	17.2/19.8	27/30	30/35	-----	-----	-----
				HKR-06*	21.7/25.0	32/37	35/40	-----	-----	-----
				HKR-08*/-08C*	25.3/29.2	37/42	45/45	-----	-----	-----
				HKR-10*/-10C*	34.3/39.6	48/55	50/60	-----	-----	-----
				HKR-15C*	34.3/39.6	48/55	50/60	17.2/19.8	21/25	25/25
				HKR-20C*	34.3/39.6	48/55	50/60	34.3/39.6	43/49	45/50
				HKR-21C*	37.9/43.8	53/60	60/60	37.9/43.8	47/55	50/60
				^HKR3-15*	0/0	5.3/5.3	15/15	31.3/36.1	39/45	40/50
^HKR3-20*	0/0	5.3/5.3	15/15	40.7/46.9	51/59	60/60				
ASPF426016DA	5.1	3/4	208/230-60-1	-----	0/0	6.4/6.4	15/15	-----	-----	-----
				HKR-03*	10.8/12.5	20/22	20/25	-----	-----	-----
				HKR-05*/-05C*	17.2/19.8	28/31	30/35	-----	-----	-----
				HKR-06*	21.6/25.0	33/38	35/40	-----	-----	-----
				HKR-08*/-08C*	25.3/29.2	38/43	40/45	-----	-----	-----
				HKR-10*/-10C*	34.3/39.6	49/56	50/60	-----	-----	-----
				HKR-15C*	34.3/39.6	49/56	50/60	17.2/19.8	21/25	25/25
				HKR-20C*	34.3/39.6	49/56	50/60	34.3/39.6	43/49	45/50
				HKR3-15*	0/0	6.4/6.4	15/15	31.2/36.1	39/45	40/50
				HKR3-20*	0/0	6.4/6.4	15/15	40.6/46.9	51/59	60/60

See Notes on Page 15.

AIR HANDLER ELECTRICAL DATA — MBVC

MODEL & HEAT KIT USAGE	CIRCUIT 1			CIRCUIT 2		
	HEATER AMPS	MCA ¹	MOP ²	HEATER AMPS	MCA ¹	MOP ²
MBVC1200AA-1A*	0 / 0	4.3 / 4.3	15 / 15	---	---	---
HKR-03*	10.8 / 12.5	17.8 / 19.9	20 / 20	---	---	---
HKR-05* / 05C*	17.2 / 19.8	25.7 / 29.0	30 / 30	---	---	---
HKR-06*	21.7 / 25.0	31.3 / 35.5	35 / 40	---	---	---
HKR-08* / -08C*	25.3 / 29.2	35.8 / 40.7	40 / 45	---	---	---
HKR-10* / -10C*	34.3 / 39.6	47.1 / 53.7	50 / 60	---	---	---
HKR-15C*	34.3 / 39.6	47.1 / 53.7	50 / 60	17.2 / 19.8	21.4 / 24.7	25 / 25
MBVC1600AA-1A*	0 / 0	6.3 / 6.3	15 / 15	---	---	---
HKR-03*	10.8 / 12.5	19.8 / 21.9	20 / 25	---	---	---
HKR-05* / 05C*	17.2 / 19.8	27.7 / 31.0	30 / 35	---	---	---
HKR-06*	21.7 / 25.0	33.3 / 37.5	35 / 40	---	---	---
HKR-08* / -08C*	25.3 / 29.2	37.8 / 42.7	40 / 45	---	---	---
HKR-10* / -10C*	34.3 / 39.6	49.1 / 55.7	50 / 60	---	---	---
HKR-15C*	34.3 / 39.6	49.1 / 55.7	50 / 60	17.2 / 19.8	21.4 / 24.7	25 / 25
MBVC2000AA-1A*	0 / 0	5.8 / 5.8	15 / 15	---	---	---
HKR-03*	10.8 / 12.5	19.3 / 21.4	20 / 25	---	---	---
HKR-05* / 05C*	17.2 / 19.8	27.2 / 30.5	30 / 35	---	---	---
HKR-06*	21.7 / 25.0	32.8 / 37.0	35 / 40	---	---	---
HKR-08* / -08C*	25.3 / 29.2	37.3 / 42.2	40 / 45	---	---	---
HKR-10* / -10C*	34.3 / 39.6	48.6 / 55.2	50 / 60	---	---	---
HKR-15C*	34.3 / 39.6	48.6 / 55.2	50 / 60	17.2 / 19.8	21.4 / 24.7	25 / 25
HKR-20C*	34.3 / 39.6	48.6 / 55.2	50 / 60	34.3 / 39.6	42.9 / 49.5	45 / 50

¹ Minimum Circuit Ampacity @ 208 / 240 V

² Maximum Overcurrent Protection Device @ 208 / 240 V

* Revision level that may or may not be designated

C Circuit breaker option

^ Heat Kit requires three-phase power supply

Note: All HKR ampacities noted above include air handler motor amps, excluding three-phase models.

AIR HANDLER ELECTRICAL DATA — MBR

MODEL & HEAT KIT USAGE	CIRCUIT 1			CIRCUIT 2		
	HEATER AMPS	MCA ¹	MOP ²	HEATER AMPS	MCA ¹	MOP ²
MBR0800AA-1 **	0 / 0	1.9 / 1.9	15 / 15	---	---	---
HKR-03*	10.8 / 12.5	15 / 17	20 / 20	---	---	---
HKR-05* / 05C*	17.1 / 19.8	23 / 26	30 / 30	---	---	---
HKR-06*	21.6 / 25.0	29 / 33	40 / 40	---	---	---
HKR-08* / -08C*	25.3 / 29.2	33 / 38	40 / 40	---	---	---
HKR-10* / -10C*	34.3 / 39.6	44 / 51	60 / 60	---	---	---
MBR1200AA-1 **	0 / 0	3.0 / 3.0	15 / 15	---	---	---
HKR-03*	10.8 / 12.5	16 / 18	20 / 20	---	---	---
HKR-05* / 05C*	17.1 / 19.8	24 / 27	40 / 40	---	---	---
HKR-06*	21.6 / 25.0	29 / 34	40 / 40	---	---	---
HKR-08* / -08C*	25.3 / 29.2	34 / 39	40 / 40	---	---	---
HKR-10* / -10C*	34.3 / 39.6	45 / 52	60 / 60	---	---	---
HKR-15C*	34.3 / 39.6	45 / 52	60 / 60	17.2 / 19.8	22 / 25	30 / 30
HKR-20C*	34.3 / 39.6	45 / 52	60 / 60	34.3 / 39.6	43 / 50	60 / 60
HKR-21C*	37.9 / 43.8	50 / 57	60 / 60	37.9 / 43.8	47 / 55	60 / 60
^HKR3-15*	0 / 0	3.0 / 3.0	15 / 15	31.2 / 36.1	39 / 45	60 / 60
^HKR3-20*	0 / 0	3.0 / 3.0	15 / 15	40.6 / 46.9	51 / 59	60 / 60
MBR1600AA-1 **	0 / 0	3.8 / 3.8	15 / 15	---	---	---
HKR-03*	10.8 / 12.5	17 / 19	20 / 20	---	---	---
HKR-05* / 05C*	17.1 / 19.8	24 / 28	40 / 40	---	---	---
HKR-06*	21.6 / 25.0	30 / 34	40 / 40	---	---	---
HKR-08* / -08C*	25.3 / 29.2	35 / 39	40 / 40	---	---	---
HKR-10* / -10C*	34.3 / 39.6	46 / 53	60 / 60	---	---	---
HKR-15C*	34.3 / 39.6	46 / 53	60 / 60	17.2 / 19.8	22 / 25	30 / 30
HKR-20C*	34.3 / 39.6	46 / 53	60 / 60	34.3 / 39.6	43 / 50	60 / 60
HKR-21C*	37.9 / 43.8	50 / 58	60 / 60	37.9 / 43.8	47 / 55	60 / 60
^HKR3-15*	0 / 0	3.8 / 3.8	15 / 15	31.26 / 36.1	39 / 45	60 / 60
^HKR3-20*	0 / 0	3.8 / 3.8	15 / 15	40.6 / 46.9	51 / 59	60 / 60
MBR2000AA-1 **	0 / 0	4.9 / 4.9	15 / 15	---	---	---
HKR-03*	10.8 / 12.5	17 / 20	20 / 20	---	---	---
HKR-05* / 05C*	17.1 / 19.8	25 / 29	40 / 40	---	---	---
HKR-06*	21.6 / 25.0	31 / 35	40 / 40	---	---	---
HKR-08* / -08C*	25.3 / 29.2	36 / 40	60 / 60	---	---	---
HKR-10* / -10C*	34.3 / 39.6	47 / 53	60 / 60	---	---	---
HKR-15C*	34.3 / 39.6	47 / 53	60 / 60	17.2 / 19.8	22 / 25	30 / 30
HKR-20C*	34.3 / 39.6	47 / 53	60 / 60	34.3 / 39.6	43 / 50	60 / 60
HKR-21C*	37.9 / 43.8	51 / 59	60 / 60	37.9 / 43.8	47 / 55	60 / 60
^HKR3-15*	0 / 0	4.9 / 4.9	15 / 15	31.2 / 36.1	39 / 45	60 / 60
^HKR3-20*	0 / 0	4.9 / 4.9	15 / 15	40.6 / 46.9	51 / 59	60 / 60

See Notes on Page 15.

ELECTRICAL DATA FOR GPC “H” SERIES PACKAGED UNITS (BLOWER ONLY, HEAT MODE)

MODEL AND HEAT KIT USAGE	CIRCUIT #1		CIRCUIT #2		ACTUAL kW / BTU@ 240V
	MCA ¹	MOP ²	MCA ¹	MOP ²	
GPC1324H21A, AB	1.5 / 1.5	--	--	--	--
HKR-05*, HKR-05C*	24 / 27	30 / 30	--	--	4.75 / 16,200
HKR-08*, HKR-08C*	33 / 38	40 / 40	--	--	7 / 23,800
HKR-10*, HKR-10C*	45 / 51	60 / 60	--	--	9.5 / 32,400
GPC1330H21A, AB	2.4 / 2.4	--	--	--	--
HKR-05*, HKR-05C*	24 / 27	30 / 30	--	--	4.75 / 16,200
HKR-08*, HKR-08C*	34 / 39	40 / 40	--	--	7 / 23,800
HKR-10*, HKR-10C*	45 / 52	60 / 60	--	--	9.5 / 32,400
HKR-15*, HKR-15C*	45 / 52	60 / 60	22 / 25	30 / 30	14.25 / 48,600
GPC1336H21A, AB	2.4 / 2.4	--	--	--	--
HKR-05*, HKR-05C*	24 / 27	30 / 30	--	--	4.75 / 16,200
HKR-08*, HKR-08C*	34 / 39	40 / 40	--	--	7 / 23,800
HKR-10*, HKR-10C*	45 / 52	60 / 60	--	--	9.5 / 32,400
HKR-15*, HKR-15C*	45 / 52	60 / 60	22 / 25	30 / 30	14.25 / 48,600
GPC1342H21A, AB	3.9 / 3.9	--	--	--	--
HKR-05*, HKR-05C*	25 / 27	30 / 30	--	--	4.75 / 16,200
HKR-08*, HKR-08C*	34 / 39	40 / 40	--	--	7 / 23,800
HKR-10*, HKR-10C*	46 / 52	60 / 60	--	--	9.5 / 32,400
HKR-15*, HKR-15C*	46 / 52	60 / 60	22 / 25	30 / 30	14.25 / 48,600
HKR-20*, HKR-20C*	46 / 52	60 / 60	43 / 49	60 / 60	19.5 / 66,500
GPC1348H21A, AB	3.9 / 3.9	--	--	--	--
HKR-05*, HKR-05C*	25 / 28	30 / 30	--	--	4.75 / 16,200
HKR-08*, HKR-08C*	34 / 40	40 / 40	--	--	7 / 23,800
HKR-10*, HKR-10C*	46 / 53	60 / 60	--	--	9.5 / 32,400
HKR-15*, HKR-15C*	46 / 52	60 / 60	22 / 25	30 / 30	14.25 / 48,600
HKR-20*, HKR-20C*	46 / 52	60 / 60	43 / 49	60 / 60	19.5 / 66,500
GPC1360H21A, AA	6.0 / 6.0	--	--	--	--
HKR-05*, HKR-05C*	26 / 30	30 / 30	--	--	4.75 / 16,200
HKR-08*, HKR-08C*	36 / 40	40 / 40	--	--	7 / 23,800
HKR-10*, HKR-10C*	48 / 54	60 / 60	--	--	9.5 / 32,400
HKR-15*, HKR-15C*	48 / 54	60 / 60	22 / 25	30 / 30	14.25 / 48,600
HKR-20*, HKR-20C*	48 / 54	60 / 60	43 / 49	60 / 60	19.5 / 66,500

¹ Minimum Circuit Ampacity @ 208 / 240 V

² Maximum Overcurrent Protection Device @ 208 / 240 V

* Revision level that may or may not be designated

C Circuit breaker option

^ Heat Kit requires three-phase power supply

NOTE: All HKR ampacities noted above include air handler motor amps, excluding three-phase models.

ELECTRICAL DATA FOR GPH “H” SERIES PACKAGED UNITS (BLOWER ONLY, HEAT MODE)

MODEL AND HEAT KIT USAGE	CIRCUIT #1		CIRCUIT #2		ACTUAL KW / BTU@ 240V
	MCA ¹	MOP ²	MCA ¹	MOP ²	
GPH1324H21A, AB	1.5 / 1.5	--	--	--	--
HKR-05*, HKR-05C*	24 / 27	30 / 30	--	--	4.75 / 16,200
HKR-08*, HKR-08C*	33 / 38	40 / 40	--	--	7 / 23,800
HKR-10*, HKR-10C*	45 / 51	60 / 60	--	--	9.5 / 32,400
GPH1330H21A, AB	2.4 / 2.4	--	--	--	--
HKR-05*, HKR-05C*	24 / 27	30 / 30	--	--	4.75 / 16,200
HKR-08*, HKR-08C*	34 / 39	40 / 40	--	--	7 / 23,800
HKR-10*, HKR-10C*	45 / 52	60 / 60	--	--	9.5 / 32,400
HKR-15*, HKR-15C*	45 / 52	60 / 60	22 / 25	30 / 30	14.25 / 48,600
GPH1336H21A, AB	2.4 / 2.4	--	--	--	--
HKR-05*, HKR-05C*	24 / 27	30 / 30	--	--	4.75 / 16,200
HKR-08*, HKR-08C*	34 / 39	40 / 40	--	--	7 / 23,800
HKR-10*, HKR-10C*	45 / 52	60 / 60	--	--	9.5 / 32,400
HKR-15*, HKR-15C*	45 / 52	60 / 60	22 / 25	30 / 30	14.25 / 48,600
GPH1342H21A, AB	3.9 / 3.9	--	--	--	--
HKR-05*, HKR-05C*	25 / 27	30 / 30	--	--	4.75 / 16,200
HKR-08*, HKR-08C*	34 / 39	40 / 40	--	--	7 / 23,800
HKR-10*, HKR-10C*	46 / 52	60 / 60	--	--	9.5 / 32,400
HKR-15*, HKR-15C*	46 / 52	60 / 60	22 / 25	30 / 30	14.25 / 48,600
HKR-20*,HKR-20C*	46 / 52	60 / 60	43 / 49	60 / 60	19.5 / 66,500
GPH1348H21A, AB	3.9 / 3.9	--	--	--	--
HKR-05*, HKR-05C*	25 / 28	30 / 30	--	--	4.75 / 16,200
HKR-08*, HKR-08C*	34 / 40	40 / 40	--	--	7 / 23,800
HKR-10*, HKR-10C*	46 / 53	60 / 60	--	--	9.5 / 32,400
HKR-15*, HKR-15C*	46 / 52	60 / 60	22 / 25	30 / 30	14.25 / 48,600
HKR-20*,HKR-20C*	46 / 52	60 / 60	43 / 49	60 / 60	19.5 / 66,500
GPH1360H21A, AA	6.0 / 6.0	--	--	--	--
HKR-05*, HKR-05C*	26 / 30	30 / 30	--	--	4.75 / 16,200
HKR-08*, HKR-08C*	36 / 40	40 / 40	--	--	7 / 23,800
HKR-10*, HKR-10C*	48 / 54	60 / 60	--	--	9.5 / 32,400
HKR-15*, HKR-15C*	48 / 54	60 / 60	22 / 25	30 / 30	14.25 / 48,600
HKR-20*,HKR-20C*	48 / 54	60 / 60	43 / 49	60 / 60	19.5 / 66,500

¹ Minimum Circuit Ampacity @ 208 / 240 V

² Maximum Overcurrent Protection Device @ 208 / 240 V

* Revision level that may or may not be designated

C Circuit breaker option

^ Heat Kit requires three-phase power supply

Note: All HKR ampacities noted above include air handler motor amps, excluding three-phase models.

ELECTRICAL DATA FOR GPC “M” SERIES PACKAGED UNITS (BLOWER ONLY, HEAT MODE)

MODEL AND HEAT KIT USAGE	CIRCUIT #1		CIRCUIT #2		ACTUAL KW / BTU@ 240V
	MCA ¹	MOP ²	MCA ¹	MOP ²	
GPC1336M21AA	1.9 / 1.9	--	--	--	--
HKR-05*, HKR-05C*	24 / 27	30 / 30	--	--	4.75 / 16,200
HKR-08*, HKR-08C*	34 / 39	40 / 40	--	--	7.0 / 23,800
HKR-10*, HKR-10C*	45 / 52	60 / 60	--	--	9.5 / 32,400
HKR-15*, HKR-15C*	45 / 52	60 / 60	22 / 25	30 / 30	14.25 / 48,600
GPC1348M21AA	5.8 / 5.8	--	--	--	--
HKR-05*, HKR-05C*	25 / 28	30 / 30	--	--	4.75 / 16,200
HKR-08*, HKR-08C*	38 / 40	40 / 40	--	--	7.0 / 23,800
HKR-10*, HKR-10C*	49 / 56	60 / 60	--	--	9.5 / 32,400
HKR-15*, HKR-15C*	49 / 56	60 / 60	22 / 25	30 / 30	14.25 / 48,600
HKR-20*, HKR-20C*	49 / 56	60 / 60	43 / 49	60 / 60	19.5 / 66,500
GPC1360M21AA	7.6 / 7.6	--	--	--	--
HKR-05*, HKR-05C*	29 / 30	30 / 30	--	--	4.75 / 16,200
HKR-08*, HKR-08C*	39 / 40	40 / 40	--	--	7.0 / 23,800
HKR-10*, HKR-10C*	51 / 58	60 / 60	--	--	9.5 / 32,400
HKR-15*, HKR-15C*	51 / 58	60 / 60	22 / 25	30 / 30	14.25 / 48,600
HKR-20*, HKR-20C*	51 / 58	60 / 60	43 / 49	60 / 60	19.5 / 66,500

¹ Minimum Circuit Ampacity @ 208 / 240 V

² Maximum Overcurrent Protection Device @ 208 / 240 V

* Revision level that may or may not be designated

C Circuit breaker option

^ Heat Kit requires three-phase power supply

NOTE: All HKR ampacities noted above include air handler motor amps, excluding three-phase models.

ELECTRICAL DATA FOR GPH “M” SERIES PACKAGED UNITS (BLOWER ONLY, HEAT MODE)

MODEL AND HEAT KIT USAGE	CIRCUIT #1		CIRCUIT #2		ACTUAL kW / BTU@ 240V
	MCA ¹	MOP ²	MCA ¹	MOP ²	
GPH1324M21AA	1.5 / 1.5	--	--	--	--
HKR-05*, HKR-05C*	24 / 27	30 / 30	--	--	4.75 / 16,200
HKR-08*, HKR-08C*	34 / 39	40 / 40	--	--	7.0 / 23,800
HKR-10*, HKR-10C*	45 / 52	60 / 60	--	--	9.5 / 32,400
GPH1330M21AA	1.5 / 1.5	--	--	--	--
HKR-05*, HKR-05C*	24 / 27	30 / 30	--	--	4.75 / 16,200
HKR-08*, HKR-08C*	34 / 39	40 / 40	--	--	7.0 / 23,800
HKR-10*, HKR-10C*	45 / 52	60 / 60	--	--	9.5 / 32,400
HKR-15*, HKR-15C*	45 / 52	60 / 60	22 / 25	30 / 30	14.25 / 48,600
GPH1336M21AA	1.9 / 1.9	--	--	--	--
HKR-05*, HKR-05C*	24 / 27	30 / 30	--	--	4.75 / 16,200
HKR-08*, HKR-08C*	34 / 39	40 / 40	--	--	7.0 / 23,800
HKR-10*, HKR-10C*	45 / 52	60 / 60	--	--	9.5 / 32,400
HKR-15*, HKR-15C*	45 / 52	60 / 60	22 / 25	30 / 30	14.25 / 48,600
GPH1348M21AA	5.8 / 5.8	--	--	--	--
HKR-05*, HKR-05C*	25 / 28	30 / 30	--	--	4.75 / 16,200
HKR-08*, HKR-08C*	38 / 40	40 / 40	--	--	7.0 / 23,800
HKR-10*, HKR-10C*	49 / 56	60 / 60	--	--	9.5 / 32,400
HKR-15*, HKR-15C*	49 / 56	60 / 60	22 / 25	30 / 30	14.25 / 48,600
HKR-20*, HKR-20C*	49 / 56	60 / 60	43 / 49	60 / 60	19.5 / 66,500
GPH1360M21AA	7.6 / 7.6	--	--	--	--
HKR-05*, HKR-05C*	29 / 30	30 / 30	--	--	4.75 / 16,200
HKR-08*, HKR-08C*	39 / 40	40 / 40	--	--	7.0 / 23,800
HKR-10*, HKR-10C*	51 / 58	60 / 60	--	--	9.5 / 32,400
HKR-15*, HKR-15C*	51 / 58	60 / 60	22 / 25	30 / 30	14.25 / 48,600
HKR-20*, HKR-20C*	51 / 58	60 / 60	43 / 49	60 / 60	19.5 / 66,500
GPH1524M41AA	4.1 / 4.1	--	--	--	--
HKR-05*, HKR-05C*	24 / 27	30 / 30	--	--	4.75 / 16,200
HKR-08*, HKR-08C*	34 / 39	40 / 40	--	--	7.0 / 23,800
HKR-10*, HKR-10C*	45 / 52	60 / 60	--	--	9.5 / 32,400
GPH1536M41AA	4.1 / 4.1	--	--	--	--
HKR-05*, HKR-05C*	24 / 27	30 / 30	--	--	4.75 / 16,200
HKR-08*, HKR-08C*	34 / 39	40 / 40	--	--	7.0 / 23,800
HKR-10*, HKR-10C*	45 / 52	60 / 60	--	--	9.5 / 32,400
HKR-15*, HKR-15C*	45 / 52	60 / 60	22 / 25	30 / 30	14.25 / 48,600
GPH1548M41AA	5.8 / 5.8	--	--	--	--
HKR-05*, HKR-05C*	25 / 28	30 / 30	--	--	4.75 / 16,200
HKR-08*, HKR-08C*	38 / 40	40 / 40	--	--	7.0 / 23,800
HKR-10*, HKR-10C*	49 / 56	60 / 60	--	--	9.5 / 32,400
HKR-15*, HKR-15C*	49 / 56	60 / 60	22 / 25	30 / 30	14.25 / 48,600
HKR-20*, HKR-20C*	49 / 56	60 / 60	43 / 49	60 / 60	19.5 / 66,500
GPH1560M41AA	7.6 / 7.6	--	--	--	--
HKR-05*, HKR-05C*	29 / 30	30 / 30	--	--	4.75 / 16,200
HKR-08*, HKR-08C*	39 / 40	40 / 40	--	--	7.0 / 23,800
HKR-10*, HKR-10C*	51 / 58	60 / 60	--	--	9.5 / 32,400
HKR-15*, HKR-15C*	51 / 58	60 / 60	22 / 25	30 / 30	14.25 / 48,600
HKR-20*, HKR-20C*	51 / 58	60 / 60	43 / 49	60 / 60	19.5 / 66,500

See Notes on previous page.

ELECTRICAL DATA FOR GPC-H “M” SERIES THREE-PHASE PACKAGED UNIT (BLOWER ONLY, HEAT MODE)

MODEL AND HEAT KIT USAGE	CIRCUIT #1		CIRCUIT #2		ACTUAL KW / BTU@ 240V
	MCA ¹	MOP ²	MCA ¹	MOP ²	
GPC1336M23AA	1.9 / 1.9	--	--	--	--
^HKR3-15*	39 / 45	60 / 60	--	--	15.0 / 55,100
^HKR3-20*	51 / 55	60 / 60	--	--	19.5 / 66,500
GPC1348M23AA	5.8 / 5.8	--	--	--	--
^HKR3-15*	39 / 45	60 / 60	--	--	15.0 / 55,100
^HKR3-20*	51 / 55	60 / 60	--	--	19.5 / 66,500
GPC1360M23AA	7.6 / 7.6	--	--	--	--
^HKR3-15*	39 / 45	60 / 60	--	--	15.0 / 55,100
^HKR3-20*	51 / 55	60 / 60	--	--	19.5 / 66,500

GPH1336M23AA	1.9 / 1.9	--	--	--	--
^HKR3-15*	39 / 45	60 / 60	--	--	15.0 / 55,100
^HKR3-20*	51 / 55	60 / 60	--	--	19.5 / 66,500
GPH1348M23AA	5.8 / 5.8	--	--	--	--
^HKR3-15*	39 / 45	60 / 60	--	--	15.0 / 55,100
^HKR3-20*	51 / 55	60 / 60	--	--	19.5 / 66,500
GPH1360M23AA	7.6 / 7.6	--	--	--	--
^HKR3-15*	39 / 45	60 / 60	--	--	15.0 / 55,100
^HKR3-20*	51 / 55	60 / 60	--	--	19.5 / 66,500

MODEL AND HEAT KIT USAGE	CIRCUIT #1		CIRCUIT #2		ACTUAL KW / BTU@ 240V
	MCA ¹	MOP ²	MCA ¹	MOP ²	
GPC1336M24AA	1.2 / 1.2	--	--	--	--
^HKR4-15*	23	30	--	--	15.0 / 55,100
^HKR4-20*	30	30	--	--	19.5 / 66,500
GPC1348M24AA	2.9 / 2.9**	--	--	--	--
^HKR4-15*	23	30	--	--	15.0 / 55,100
^HKR4-20*	30	30	--	--	19.5 / 66,500
GPC1360M24AA	3.8 / 3.8**	--	--	--	--
^HKR4-15*	23	30	--	--	15.0 / 55,100
^HKR4-20*	30	30	--	--	19.5 / 66,500

GPH1336M24AA	1.2 / 1.2	--	--	--	--
^HKR4-15*	23	30	--	--	15.0 / 55,100
^HKR4-20*	30	30	--	--	19.5 / 66,500
GPH1348M24AA	2.9 / 2.9	--	--	--	--
^HKR4-15*	23	30	--	--	15.0 / 55,100
^HKR4-20*	30	30	--	--	19.5 / 66,500
GPH1360M24AA	3.8 / 3.8	--	--	--	--
^HKR4-15*	23	30	--	--	15.0 / 55,100
^HKR4-20*	30	30	--	--	19.5 / 66,500

¹ Minimum Circuit Ampacity @ 208 / 240 V

² Maximum Overcurrent Protection device @ 208 / 240 V

³ Minimum Circuit Ampacity @ 460 V

⁴ Maximum Overcurrent Protection device @ 460 V

* Revision level that may or may not be designated

C Circuit Breaker option

^ Heat Kit requires three-phase power supply

Note: All HKR ampacities noted above include unit motor amps. Excluding three-phase models

