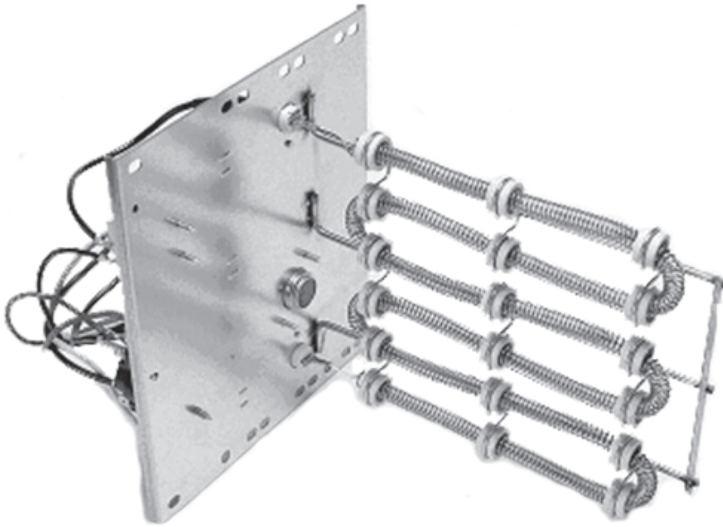




Air Conditioning & Heating

HKR / HKA / HKP / HKS

ELECTRIC HEAT KITS FOR AIR HANDLERS AND PACKAGED ELECTRIC UNITS



Standard Features

- Sequencers for better temperature control
- Multiple branch circuit capability
- Completely assembled and tested
- Control circuitry arranged to readily permit staging
- Factory-installed circuit breakers available on specific models (See Electrical Data)
- Fuse link secondary high-temperature limit control
- Plug-in wiring harness for ease of installation into air handler
- Rust-resistant nickel chromium heat elements
- ETL Listed

Contents

AVPTC	3
ARPT	5
ARPF	7
ARUF-SF with HKS Electric Heat	11
ARUF with HKR Electric Heat	13
ASUF	17
ASPT	18
ASPF	20
MBVC	22
MBR	23
GPC15M	24
GPC13M	25
GPC14H	26
GPC13H	27
GPH15M	28
GPH14H	29
GPH13M	30
GPH13H	31



*Complete warranty details available from your local dealer or at www.goodmanmfg.com.

NOMENCLATURE

		HKR	*	-05	*	A			
		1	2	3	4,5	11			
Unit Type							Revisions		
HKR Air Handlers & Packaged Units							Engineering Revisions		
HKA Air Handlers									
HKP Packaged Units							Circuit Breaker		
							None Single- or 3-Phase Kit; No Circuit Breaker		
Phase							C Single-Phase Kit w/ Circuit Breaker		
None Single-Phase									
3 Three-Phase									
Heating Capacity @ 240 Volts									
5	4.75 kW	15	14.25 to 15.00 kW						
8	7.00 kW	20	19.00 to 19.60 kW						
10	9.50 kW								

		HKS	X	03	X	A	AA		
		1	2	3	4	5	6,7		
Unit Type							Revisions		
HKS Heat Kit for Air Handlers							Engineering Revisions		
Phase							Phase		
X No circuit breaker							A Single Phase 208 V		
C Circuit Breaker							B Single Phase 240 V		
							C Single Phase 208/240 V		
							D Three Phase 208 V		
							E Three Phase 240 V		
							F Three Phase 208/240 V		
							G Three Phase 460 V		
Heating Capacity @ 240 Volts							Cabinet Size (MAX)		
03	3.0 kW								
05	4.5 kW								
06	6.0 kW								
08	8.0 kW								
10	9.6 kW								
15	14.4 kW								
19	19.2 k@ wth 150F limit								
20	19.2 kW with 170F limit								
25	25.0 kW								
							C C Cabinet		
							D D Cabinet		
							X All Cabinet Sizes		

HEATING kW CORRECTION FACTOR

SUPPLY VOLTAGE	240	230	220	210	208
CORRECTION FACTOR	1.00	0.92	0.84	0.77	0.75

Multiply the 240-volt heating capacity by correction factors.



AIR HANDLER ELECTRICAL DATA — AVPTC

MODEL & HEAT KIT USAGE	CIRCUIT 1			CIRCUIT 2			SINGLE-POINT KIT	
	HEATER AMPS	MCA ¹	MOP ²	HEATER AMPS	MCA ¹	MOP ²	MCA ¹	MOP ²
AVPTC24B14A*	0.0/0.0	4.9/4.9	15/15	---	---	---	---	---
HKS*03XC*	10.8/12.5	18/21	20/25	---	---	---	---	---
HKS*05XC*	17.3/20.0	27/30	30/30	---	---	---	---	---
HKS*06XC*	21.7/25.0	32/36	35/40	---	---	---	---	---
HKS*08XC*	28.9/33.3	41/47	45/50	---	---	---	---	---
HKS*10XC*	34.7/40.0	48/55	50/60	---	---	---	---	---
HKSC15*##	34.7/40.0	48/55	50/60	17.3/20.0	22/25	25/25	70/80	70/80
AVPTC30C14A*	0.0/0.0	4.9/4.9	15/15	---	---	---	---	---
HKS*03XC*	10.8/12.5	18/21	20/25	---	---	---	---	---
HKS*05XC*	17.3/20.0	27/30	30/30	---	---	---	---	---
HKS*06XC*	21.7/25.0	32/36	35/40	---	---	---	---	---
HKS*08XC*	28.9/33.3	41/47	45/50	---	---	---	---	---
HKS*10XC*	34.7/40.0	48/55	50/60	---	---	---	---	---
HKSC15*##	34.7/40.0	48/55	50/60	17.3/20.0	22/25	25/25	70/80	70/80
AVPTC36C14A*	0.0/0.0	6.5/6.5	15/15	---	---	---	---	---
HKS*03XC*	10.8/12.5	20/22	20/25	---	---	---	---	---
HKS*05XC*	17.3/20.0	28/32	30/35	---	---	---	---	---
HKS*06XC*	21.7/25.0	34/38	35/40	---	---	---	---	---
HKS*08XC*	28.9/33.3	43/48	45/50	---	---	---	---	---
HKS*10XC*	34.7/40.0	50/57	50/60	---	---	---	---	---
HKSC15*##	34.7/40.0	50/57	50/60	17.3/20.0	22/25	25/25	72/82	80/90
HKSC19C##	34.7/40.0	50/57	50/60	34.7/40	43/50	45/50	93/107	100/110
HKSC15XF*	0.0/0.0	6.5/6.5	15/15	30.0/34.6	38/43	40/45	---	---
HKSC20XF*	0.0/0.0	6.5/6.5	15/15	37.5/43.3	47/54	50/60	---	---
AVPTC42D14A*	0.0/0.0	6.5/6.5	15/15	---	---	---	---	---
HKS*03XC*	10.8/12.5	20/22	20/25	---	---	---	---	---
HKS*05XC*	17.3/20.0	28/32	30/35	---	---	---	---	---
HKS*06XC*	21.7/25.0	34/38	35/40	---	---	---	---	---
HKS*08XC*	28.9/33.3	43/48	45/50	---	---	---	---	---
HKS*10XC*	34.7/40.0	50/57	50/60	---	---	---	---	---
HKSC15*##	34.7/40.0	50/57	50/60	17.3/20.0	22/25	25/25	72/82	80/90
HKSC20D##	34.7/40.0	50/57	50/60	34.7/40	43/50	45/50	93/107	100/110
HKSC15XF*	0.0/0.0	6.5/6.5	15/15	30.0/34.6	38/43	40/45	---	---
HKSC20XF*	0.0/0.0	6.5/6.5	15/15	37.5/43.3	47/54	50/60	---	---

¹ Minimum Circuit Ampacity @ 208 / 240 V

² Maximum Overcurrent Protection Device @ 208 / 240V

^ Heat Kit requires three-phase power supply

* Revision level that may or may not be designated

C Circuit breaker option --- indicates Not Required

NOTES

- All HKR ampacities noted above include air handler motor amps, excluding three-phase models.
- HKA meets the new UL1995 requirements for 15 and 20KW heaters; HKR-21C* is Obsolete; no replacement

AIR HANDLER ELECTRICAL DATA — AVPTC (CONT.)

MODEL & HEAT KIT USAGE	CIRCUIT 1			CIRCUIT 2			SINGLE-POINT KIT	
	HEATER AMPS	MCA ¹	MOP ²	HEATER AMPS	MCA ¹	MOP ²	MCA ¹	MOP ²
AVPTC48D14A*	0.0/0.0	6.5/6.5	15/15	---	---	---	---	---
HK5*03XC*	10.8/12.5	20/22	20/25	---	---	---	---	---
HK5*05XC*	17.3/20.0	28/32	30/35	---	---	---	---	---
HK5*06XC*	21.7/25.0	34/38	35/40	---	---	---	---	---
HK5*08XC*	28.9/33.3	43/48	45/50	---	---	---	---	---
HK5*10XC*	34.7/40.0	50/57	50/60	---	---	---	---	---
HKSC15*##	34.7/40.0	50/57	50/60	17.3/20.0	22/25	25/25	72/82	80/90
HKSC20D##	34.7/40.0	50/57	50/60	34.7/40	43/50	45/50	93/107	100/110
HKSC15XF*	0.0/0.0	6.5/6.5	15/15	30.0/34.6	38/43	40/45	---	---
HKSC20XF*	0.0/0.0	6.5/6.5	15/15	37.5/43.3	47/54	50/60	---	---
AVPTC60D14A*	0.0/0.0	8.6/8.6	15/15	---	---	---	---	---
HK5*03XC*	10.8/12.5	22/24	30/30	---	---	---	---	---
HK5*05XC*	17.3/20.0	30/34	35/40	---	---	---	---	---
HK5*06XC*	21.7/25.0	36/40	40/45	---	---	---	---	---
HK5*08XC*	28.9/33.3	45/50	45/50	---	---	---	---	---
HK5*10XC*	34.7/40.0	52/59	50/60	---	---	---	---	---
HKSC15*##	34.7/40.0	52/59	50/60	17.3/20	22/25	25/25	74/84	80/90
HKSC20D##	34.7/40.0	52/59	50/60	34.7/40.0	43/50	45/50	95/109	100/110
HKSC15XF*	0.0/0.0	8.6/8.6	15/15	30.0/34.6	38/43	40/45	---	---
HKSC20XF*	0.0/0.0	8.6/8.6	15/15	37.5/43.3	47/54	50/60	---	---
HKSC25DC*	34.7/40.0	52/59	60/60	52.0/60.0	65/75	70/80	117/134	125/150

¹ Minimum Circuit Ampacity @ 208 / 240 V

² Maximum Overcurrent Protection Device @ 208 / 240V

^ Heat Kit requires three-phase power supply

* Revision level that may or may not be designated

C Circuit breaker option --- indicates Not Required

NOTES

- All HKR ampacities noted above include air handler motor amps, excluding three-phase models.
- HKA meets the new UL1995 requirements for 15 and 20KW heaters; HKR-21C* is Obsolete; no replacement

AIR HANDLER ELECTRICAL DATA — ARPT

MODEL & HEAT KIT USAGE	CIRCUIT 1			CIRCUIT 2			SINGLE-POINT KIT	
	HEATER AMPS	MCA ¹	MOP ²	HEATER AMPS	MCA ¹	MOP ²	MCA ¹	MOP ²
ARPT18B14AA	0/0	2.4/2.4	15/15	---	---	---	---	---
HKS*03XC*	10.8/12.5	16/18	20/20	---	---	---	---	---
HKS*05XC*	17.3/20	24/27	25/30	---	---	---	---	---
HKS*06XC*	21.7/25	29/34	30/35	---	---	---	---	---
HKS*08XC*	28.9/33.3	34/39	40/45	---	---	---	---	---
HKS*10XC*	34.7/40	45/52	50/60	---	---	---	---	---
ARPT24B14AA	0/0	2.4/2.4	15/15	---	---	---	---	---
HKS*03XC*	10.8/12.5	16/18	20/20	---	---	---	---	---
HKS*05XC*	17.3/20	24/28	25/30	---	---	---	---	---
HKS*06XC*	21.7/25	30/34	30/35	---	---	---	---	---
HKS*08XC*	28.9/33.3	39/44	40/45	---	---	---	---	---
HKS*10XC*	34.7/40	46/53	50/60	---	---	---	---	---
HKSC15*##	34.7/40	46/53	50/60	17.3/20	22/25	25/30	68/78	70/80
ARPT30B14AA	0/0	2.4/2.4	15/15	---	---	---	---	---
HKS*03XC*	10.8/12.5	16/18	20/20	---	---	---	---	---
HKS*05XC*	17.3/20	24/28	25/30	---	---	---	---	---
HKS*06XC*	21.7/25	30/34	30/35	---	---	---	---	---
HKS*08XC*	28.9/33.3	39/44	40/45	---	---	---	---	---
HKS*10XC*	34.7/40	46/53	50/60	---	---	---	---	---
HKSC15*##	34.7/40	46/53	50/60	17.3/20	22/25	25/30	68/78	70/80
ARPT36C14AA	0/0	3.8/3.8	15/15	---	---	---	---	---
HKS*03XC*	10.8/12.5	18/20	20/20	---	---	---	---	---
HKS*05XC*	17.3/20	26/29	30/30	---	---	---	---	---
HKS*06XC*	21.7/25	32/36	35/40	---	---	---	---	---
HKS*08XC*	28.9/33.3	41/46	45/50	---	---	---	---	---
HKS*10XC*	34.7/40	48/54	50/60	---	---	---	---	---
HKSC15*##	34.7/40	48/54	50/60	17.3/20	22/25	25/30	70/80	70/80
HKSC19C##	34.7/40	48/54	50/60	34.7/40	44/50	45/60	91/105	100/110
HKSC15XF*	0/0	3.8/3.8	15/15	30/34.6	38/44	40/50	---	---
HKSC20XF*	0/0	3.8/3.8	15/15	37/43	47/54	50/60	---	---
ARPT36D14AA	0/0	3.8/3.8	15/15	---	---	---	---	---
HKS*03XC*	10.8/12.5	18/20	20/20	---	---	---	---	---
HKS*05XC*	17.3/20	26/29	30/30	---	---	---	---	---
HKS*06XC*	21.7/25	31/35	35/40	---	---	---	---	---
HKS*08XC*	28.9/33.3	40/46	40/50	---	---	---	---	---
HKS*10XC*	34.7/40	48/54	50/60	---	---	---	---	---
HKSC15*##	34.7/40	48/54	50/60	17.3/20	22/25	25/30	70/80	70/80
HKSC20D##	34.7/40	48/54	50/60	34.7/40	44/50	45/60	91/105	100/110
HKSC15XF*	0/0	3.8/3.8	15/15	30/34.6	38/44	40/50	---	---
HKSC20XF*	0/0	3.8/3.8	15/15	37/43	47/54	50/60	---	---

¹ Minimum Circuit Ampacity (Heater Amps + Motor Amps) X 1.25

* Revision level that may or may not be designated

² Maximum Overcurrent Protection = 2.25 X Motor Amps + Heater Amps

--- indicates Not Required

AIR HANDLER ELECTRICAL DATA — ARPT (CONT.)

MODEL & HEAT KIT USAGE	CIRCUIT 1			CIRCUIT 2			SINGLE-POINT KIT	
	HEATER AMPS	MCA ¹	MOP ²	HEATER AMPS	MCA ¹	MOP ²	MCA ¹	MOP ²
ARPT42D14AA	0/0	4.4/4.4	15/15	---	---	---	---	---
HKS*03XC*	10.8/12.5	18/20	20/25	---	---	---	---	---
HKS*05XC*	17.3/20	26/30	30/30	---	---	---	---	---
HKS*06XC*	21.7/25	32/36	35/40	---	---	---	---	---
HKS*08XC*	28.9/33.3	41/46	45/50	---	---	---	---	---
HKS*10XC*	34.7/40	48/55	50/60	---	---	---	---	---
HKSC15*##	34.7/40	48/55	50/60	17.3/20	22/25	25/30	71/81	80/90
HKSC20D##	34.7/40	48/55	50/60	34.7/40	44/50	45/60	92/106	100/110
HKSC15XF*	0/0	4.4/ 4.4	15/15	30/34.6	38/44	40/50	---	---
HKSC20XF*	0/0	4.4/ 4.4	15/15	37/43	47/54	50/60	---	---
ARPT48D14AA	0/0	4.4/4.4	15/15	---	---	---	---	---
HKS*03XC*	10.8/12.5	18/20	20/25	---	---	---	---	---
HKS*05XC*	17.3/20	26/30	30/30	---	---	---	---	---
HKS*06XC*	21.7/25	32/36	35/40	---	---	---	---	---
HKS*08XC*	28.9/33.3	41/46	45/50	---	---	---	---	---
HKS*10XC*	34.7/40	48/55	50/60	---	---	---	---	---
HKSC15*##	34.7/40	48/55	50/60	17.3/20	22/25	25/30	71/81	80/90
HKSC20D##	34.7/40	48/55	50/60	34.7/40	44/50	45/60	92/106	100/110
HKSC15XF*	0/0	4.4/ 4.4	15/15	30/34.6	38/44	40/50	---	---
HKSC20XF*	0/0	4.4/ 4.4	15/15	37/43	47/54	50/60	---	---
ARPT60D14AA	0/0	5.8/5.8	15/15	---	---	---	---	---
HKS*03XC*	10.8/12.5	20/22	20/25	---	---	---	---	---
HKS*05XC*	17.3/20	28/31	30/35	---	---	---	---	---
HKS*06XC*	21.7/25	33/37	35/40	---	---	---	---	---
HKS*08XC*	28.9/33.3	42/48	45/50	---	---	---	---	---
HKS*10XC*	34.7/40	50/56	50/60	---	---	---	---	---
HKSC15*##	34.7/40	50/56	50/60	17.3/20	22/25	25/30	72/82	80/90
HKSC20D##	34.7/40	50/56	50/60	34.7/40	44/50	45/60	94/107	100/110
HKSC15XF*	0/0	5.8/5.8	15/15	30/34.6	38/44	40/50	---	---
HKSC20XF*	0/0	5.8/5.8	15/15	37/43	47/54	50/60	---	---
HKSC25DC*	34.7/40	50/56	50/60	52/60	65/75	70/80	116/133	125/150

¹ Minimum Circuit Ampacity (Heater Amps + Motor Amps) X 1.25

* Revision level that may or may not be designated

² Maximum Overcurrent Protection = 2.25 X Motor Amps + Heater Amps

--- indicates Not Required

AIR HANDLER ELECTRICAL DATA — ARPF

AIR HANDLER MODEL	MOTOR		VOLTS-HERTZ-PHASE	HEATER KIT	CIRCUIT 1			CIRCUIT 2		
	AMP+	HP			HEATER AMPS	MCA ¹	MOP ²	HEATER AMPS	MCA ¹	MOP ²
ARPF182416AA ARPF182416BA	1.7	1/3	208/240-60-1	-----	0/0	2.1/2.1	15/15	----	----	----
				HKR-03*	10.8/12.5	16/18	20/20	----	----	----
				HKR-05*/-05C*	17.1/19.8	24/27	30/30	----	----	----
				HKR-06*	21.6/25.0	30/34	40/40	----	----	----
				HKR-08*/-08C*	25.2/29.1	34/39	40/40	----	----	----
				HKR-10*/-10C*	34.3/39.6	45/52	60/60	----	----	----
ARPF182416CA	1.9	1/3	208/240-60-1	-----	0/0	2.4/2.4	15/15	----	----	----
				HKR-03*	10.8/12.5	16/18	20/20	----	----	----
				HKR-05*/-05C*	17.2/19.8	24/27	25/30	----	----	----
				HKR-06*	21.7/25.0	29/34	30/35	----	----	----
				HKR-08*/-08C*	25.3/29.2	34/39	35/40	----	----	----
				HKR-10*/-10C*	34.3/39.6	45/52	50/60	----	----	----
ARPF193116AA ARPF193116BA	1.48	1/4	208/240-60-1	-----	0/0	1.9/1.9	15/15	----	----	----
				HKR-03*	10.8/12.5	15/17	20/20	----	----	----
				HKR-05*/-05C*	17.1/19.8	23/27	30/30	----	----	----
				HKR-06*	21.6/25.0	29/33	40/40	----	----	----
				HKR-08*/-08C*	25.2/29.1	33/38	40/40	----	----	----
				HKR-10*/-10C*	34.3/39.6	45/51	60/60	----	----	----
ARPF193116CA	1.48	1/4	208/240-60-1	-----	0/0	1.9/1.9	15/15	----	----	----
				HKR-03*	10.8/12.5	15/17	20/20	----	----	----
				HKR-05*/-05C*	17.2/19.8	23/27	25/30	----	----	----
				HKR-06*	21.7/25.0	29/33	30/35	----	----	----
				HKR-08*/-08C*	25.3/29.2	33/38	35/40	----	----	----
				HKR-10*/-10C*	34.3/39.6	45/51	45/60	----	----	----
ARPF303016AA ARPF303016BA	2.64	1/3	208/240-60-1	-----	0/0	3.3/3.3	15/15	----	----	----
				HKR-03*	10.8/12.5	17/19	20/20	----	----	----
				HKR-05*/-05C*	17.1/19.8	25/28	30/30	----	----	----
				HKR-06*	21.6/25.0	30/35	40/40	----	----	----
				HKR-08*/-08C*	25.2/29.1	35/40	40/40	----	----	----
				HKR-10*/-10C*	34.3/39.6	46/53	60/60	----	----	----
				HKR-15C*	34.3/39.6	46/53	60/60	17.1/19.8	22/25	30/30
				HKR-20C*	34.3/39.6	46/53	60/60	34.3/39.6	43/49	60/60
				HKR-21C*	37.9/43.8	51/58	60/60	37.9/43.8	48/55	60/60
				^HKR3-15*	0/0	3.3/3.3	15/15	31.2/36.1	39/45	60/60
^HKR3-20*	0/0	3.3/3.3	15/15	40.6/46.9	51/59	60/60				

¹ Minimum Circuit Ampacity @ 208 / 240 V

² Maximum Overcurrent Protection Device @ 208 / 240V

^ Heat Kit requires three-phase power supply

* Revision level that may or may not be designated

C Circuit breaker option --- indicates Not Required

NOTES

- All HKR ampacities noted above include air handler motor amps, excluding three-phase models.
- HKA meets the new UL1995 requirements for 15 and 20KW heaters; HKR-21C* is Obsolete; no replacement

AIR HANDLER ELECTRICAL DATA — ARPF (CONT.)

AIR HANDLER MODEL	MOTOR		VOLTS-HERTZ-PHASE	HEATER KIT	CIRCUIT 1			CIRCUIT 2						
	AMP+	HP			HEATER AMPS	MCA ¹	MOP ²	HEATER AMPS	MCA ¹	MOP ²				
ARPF303016CA	2.64	1/3	208/240-60-1	-----	0/0	3.3/3.3	15/15	----	----	----				
				HKR-03*	10.8/12.5	17/19	20/20	----	----	----				
				HKR-05*/-05C*	17.2/19.8	25/28	25/30	----	----	----				
				HKR-06*	21.7/25.0	30/35	35/35	----	----	----				
				HKR-08*/-08C*	25.3/29.2	35/40	35/40	----	----	----				
				HKR-10*/-10C*	34.3/39.6	46/53	50/60	----	----	----				
				15 HKR-15C*	34.3/39.6	46/53	50/60	17.2/19.8	21/25	25/25				
				16 HKR-20C*	34.3/39.6	46/53	50/60	34.3/39.6	43/49	45/50				
				17 HKR-21C*	37.9/43.8	51/58	60/60	37.9/43.8	47/55	50/60				
				18 ^HKR3-15*	0/0	3.3/3.3	15/15	31.3/36.1	39/45	40/50				
ARPF363616AA ARPF363616BA	2.64	1/3	208/240-60-1	-----	0/0	3.3/3.3	15/15	----	----	----				
				HKR-03*	10.8/12.5	17/19	20/20	----	----	----				
				HKR-05*/-05C*	17.1/19.8	25/28	30/30	----	----	----				
				HKR-06*	21.6/25.0	30/35	40/40	----	----	----				
				HKR-08*/-08C*	25.2/29.1	35/40	40/40	----	----	----				
				HKR-10*/-10C*	34.3/39.6	46/53	60/60	----	----	----				
				HKR-15C*	34.3/39.6	46/53	60/60	17.1/19.8	22/25	30/30				
				^HKR3-15*	0/0	3.3/3.3	15/15	31.2/36.1	39/45	60/60				
				ARPF363616CA	2.64	1/3	208/240-60-1	-----	0/0	3.3/3.3	15/15	----	----	----
								HKR-03*	10.8/12.5	17/19	20/20	----	----	----
HKR-05*/-05C*	17.2/19.8	25/28	25/30					----	----	----				
HKR-06*	21.7/25.0	30/35	35/35					----	----	----				
HKR-08*/-08C*	25.3/29.2	35/40	35/40					----	----	----				
HKR-10*/-10C*	34.3/39.6	46/53	50/60					----	----	----				
HKR-15C*	34.3/39.6	46/53	50/60					17.2/19.8	21/25	25/25				
^HKR3-15*	0/0	3.3/3.3	15/15					31.3/36.1	39/45	40/50				
ARPF364216AA ARPF364216AB ARPF364216AC ARPF364216BA	2.95	1/2	208/240-60-1					-----	0/0	3.7/3.7	15/15	----	----	----
								HKR-03*	10.8/12.5	17/19	20/20	----	----	----
				HKR-05*/-05C*	17.1/19.8	25/28	30/30	----	----	----				
				HKR-06*	21.6/25.0	31/35	40/40	----	----	----				
				HKR-08*/-08C*	25.2/29.1	35/40	40/40	----	----	----				
				HKR-10*/-10C*	34.3/39.6	47/53	60/60	----	----	----				
				HKR-15C*	34.3/39.6	47/53	60/60	17.1/19.8	22/25	30/30				
				HKR-20C*	34.3/39.6	47/53	60/60	34.3/39.6	43/49	60/60				
				HKR-21C*	37.9/43.8	51/58	60/60	37.9/43.8	48/55	60/60				
				^HKR3-15*	0/0	3.7/3.7	15/15	31.2/36.1	39/45	60/60				
^HKR3-20*	0/0	3.7/3.7	15/15	40.6/46.9	51/59	60/60								

¹ Minimum Circuit Ampacity @ 208 / 240 V

² Maximum Overcurrent Protection Device @ 208 / 240V

^ Heat Kit requires three-phase power supply

* Revision level that may or may not be designated

C Circuit breaker option --- indicates Not Required

NOTES

- All HKR ampacities noted above include air handler motor amps, excluding three-phase models.
- HKA meets the new UL1995 requirements for 15 and 20KW heaters; HKR-21C* is Obsolete; no replacement

AIR HANDLER ELECTRICAL DATA — ARPF (CONT.)

AIR HANDLER MODEL	MOTOR		VOLTS-HERTZ-PHASE	HEATER KIT	CIRCUIT 1			CIRCUIT 2		
	AMP+	HP			HEATER AMPS	MCA ¹	MOP ²	HEATER AMPS	MCA ¹	MOP ²
ARPF364216CA	3.12	1/2	208/240-60-1	-----	0/0	3.9/3.9	15/15	----	----	----
				HKR-03*	10.8/12.5	17/20	20/20	----	----	----
				HKR-05*/-05C*	17.2/19.8	25/29	30/30	----	----	----
				HKR-06*	21.7/25.0	31/35	35/40	----	----	----
				HKR-08*/-08C*	25.3/29.2	36/40	40/45	----	----	----
				HKR-10*/-10C*	34.3/39.6	47/53	50/60	----	----	----
				HKR-15C*	34.3/39.6	47/53	50/60	17.2/19.8	21/25	25/25
				HKR-20C*	34.3/39.6	47/53	50/60	34.3/39.6	43/49	45/50
				HKR-21C*	37.9/43.8	51/59	60/60	37.9/43.8	47/55	50/60
				^HKR3-15*	0/0	3.9/3.9	15/15	31.3/36.1	39/45	40/50
^HKR3-20*	0/0	3.9/3.9	15/15	40.7/46.9	51/59	60/60				
ARPF374316AA ARPF374316BA	3.39	1/2	208/240-60-1	-----	0/0	4.2/4.2	15/15	----	----	----
				HKR-03*	10.8/12.5	18/20	20/20	----	----	----
				HKR-05*/-05C*	17.1/19.8	26/29	30/30	----	----	----
				HKR-06*	21.6/25.0	31/35	40/40	----	----	----
				HKR-08*/-08C*	25.2/29.1	36/41	40/40	----	----	----
				HKR-10*/-10C*	34.3/39.6	47/54	60/60	----	----	----
				HKR-15C*	34.3/39.6	47/54	60/60	17.1/19.8	22/25	30/30
				HKR-20C*	34.3/39.6	47/54	60/60	34.3/39.6	43/49	60/60
				HKR-21C*	37.9/43.8	52/59	60/60	37.9/43.8	48/55	60/60
				^HKR3-15*	0/0	4.2/4.2	15/15	31.2/36.1	39/45	60/60
^HKR3-20*	0/0	4.2/4.2	15/15	40.6/46.9	51/59	60/60				
ARPF374316CA	3.39	1/2	208/240-60-1	-----	0/0	4.2/4.2	15/15	----	----	----
				HKR-03*	10.8/12.5	18/20	20/20	----	----	----
				HKR-05*/-05C*	17.2/19.8	26/29	30/30	----	----	----
				HKR-06*	21.7/25.0	31/35	35/40	----	----	----
				HKR-08*/-08C*	25.3/29.2	36/41	40/45	----	----	----
				HKR-10*/-10C*	34.3/39.6	47/54	50/60	----	----	----
				HKR-15C*	34.3/39.6	47/54	50/60	17.2/19.8	21/25	25/25
				HKR-20C*	34.3/39.6	47/54	50/60	34.3/39.6	43/49	45/50
				HKR-21C*	37.9/43.8	52/59	60/60	37.9/43.8	47/55	50/60
				^HKR3-15*	0/0	4.2/4.2	15/15	31.3/36.1	39/45	40/50
^HKR3-20*	0/0	4.2/4.2	15/15	40.7/46.9	51/59	60/60				
ARPF486016AA ARPF486016AB ARPF486016BA	4.3	3/4	208/240-60-1	-----	0/0	5.4/5.4	15/15	----	----	----
				HKR-03*	10.8/12.5	19/21	20/20	----	----	----
				HKR-05*/-05C*	17.1/19.8	27/30	30/30	----	----	----
				HKR-06*	21.6/25.0	32/37	40/40	----	----	----
				HKR-08*/-08C*	25.2/29.1	37/39	40/40	----	----	----
				HKR-10*/-10C*	34.3/39.6	48/55	60/60	----	----	----
				HKR-15C*	34.3/39.6	48/55	60/60	17.1/19.8	22/25	30/30
				HKR-20C*	34.3/39.6	48/55	60/60	34.3/39.6	43/49	60/60
				HKR-21C*	37.9/43.8	53/59	60/60	37.9/43.8	48/55	60/60
				^HKR3-15*	0/0	5.4/5.4	15/15	31.2/36.1	39/45	60/60
^HKR3-20*	0/0	5.4/5.4	15/15	40.6/46.9	51/59	60/60				

¹ Minimum Circuit Ampacity @ 208 / 240 V

² Maximum Overcurrent Protection Device @ 208 / 240V

^ Heat Kit requires three-phase power supply

* Revision level that may or may not be designated

C Circuit breaker option --- indicates Not Required

NOTES

- All HKR ampacities noted above include air handler motor amps, excluding three-phase models.
- HKA meets the new UL1995 requirements for 15 and 20KW heaters; HKR-21C* is Obsolete; no replacement

AIR HANDLER ELECTRICAL DATA — ARPF (CONT.)

AIR HANDLER MODEL	MOTOR		VOLTS-HERTZ-PHASE	HEATER KIT	CIRCUIT 1			CIRCUIT 2		
	AMP+	HP			HEATER AMPS	MCA ¹	MOP ²	HEATER AMPS	MCA ¹	MOP ²
ARPF486016CA	4.06	3/4	208/240-60-1	-----	0/0	5.1/5.1	15/15	----	----	----
				HKR-03*	10.8/12.5	19/21	20/25	----	----	----
				HKR-05*/-05C*	17.2/19.8	27/30	30/30	----	----	----
				HKR-06*	21.7/25	32/36	35/40	----	----	----
				HKR-08*/-08C*	25.3/29.2	37/42	40/45	----	----	----
				HKR-10*/-10C*	34.3/39.6	48/55	50/60	----	----	----
				HKR-15C*	34.3/39.6	48/55	50/60	17.2/19.8	21/25	25/25
				HKR-20C*	34.3/39.6	48/55	50/60	34.3/39.6	43/49	45/50
				HKR-21C*	37.9/43.8	52/60	60/60	37.9/43.8	47/55	50/60
				^HKR3-15*	0/0	5.1/5.1	15/15	31.3/36.1	39/45	40/50
^HKR3-20*	0/0	5.1/5.1	15/15	40.7/46.9	51/59	60/60				
ARPF496116AA	4.3	3/4	208/240-60-1	-----	0/0	5.4/5.4	15/15	----	----	----
				HKR-03*	10.8/12.5	19/21	20/20	----	----	----
				HKR-05*/-05C*	17.1/19.8	27/30	30/30	----	----	----
				HKR-06*	21.6/25.0	32/37	40/40	----	----	----
				HKR-08*/-08C*	25.2/29.1	37/39	40/40	----	----	----
				HKR-10*/-10C*	34.3/39.6	48/55	60/60	----	----	----
				HKR-15C*	34.3/39.6	48/55	60/60	17.1/19.8	22/25	30/30
				HKR-20C*	34.3/39.6	48/55	60/60	34.3/39.6	43/49	60/60
				HKR-21C*	37.9/43.8	53/59	60/60	37.9/43.8	48/55	60/60
				^HKR3-15*	0/0	5.4/5.4	15/15	31.2/36.1	39/45	60/60
^HKR3-20*	0/0	5.4/5.4	15/15	40.6/46.9	51/59	60/60				
ARPF496116CA	4.06	3/4	208/240-60-1	-----	0/0	5.1/5.1	15/15	----	----	----
				HKR-03*	10.8/12.5	19/21	20/25	----	----	----
				HKR-05*/-05C*	17.2/19.8	27/30	30/30	----	----	----
				HKR-06*	21.7/25.0	32/36	35/40	----	----	----
				HKR-08*/-08C*	25.3/29.2	37/42	40/45	----	----	----
				HKR-10*/-10C*	34.3/39.6	48/55	50/60	----	----	----
				HKR-15C*	34.3/39.6	48/55	50/60	17.2/19.8	21/25	25/25
				HKR-20C*	34.3/39.6	48/55	50/60	34.3/39.6	43/49	45/50
				HKR-21C*	37.9/43.8	52/60	60/60	37.9/43.8	47/55	50/60
				HKR3-15*	0/0	5.1/5.1	15/15	31.3/36.1	39/45	40/50
HKR3-20*	0/0	5.1/5.1	15/15	40.7/46.9	51/59	60/60				

¹ Minimum Circuit Ampacity @ 208 / 240 V

² Maximum Overcurrent Protection Device @ 208 / 240V

^ Heat Kit requires three-phase power supply

* Revision level that may or may not be designated

C Circuit breaker option --- indicates Not Required

NOTES

- All HKR ampacities noted above include air handler motor amps, excluding three-phase models.
- HKA meets the new UL1995 requirements for 15 and 20KW heaters; HKR-21C* is Obsolete; no replacement

AIR HANDLER ELECTRICAL DATA — ARUF-SF WITH HKS ELECTRIC HEAT

MODEL & HEAT KIT USAGE	CIRCUIT 1			CIRCUIT 2			SINGLE-POINT KIT	
	HEATER AMPS	MCA ¹	MOP ²	HEATER AMPS	MCA ¹	MOP ²	MCA ¹	MOP ²
ARUF18B14AA	0/0	2.4/2.4	15/15	---	---	---	---	---
HKS*03XC*	10.8/12.5	16/18	20/20	---	---	---	---	---
HKS*05XC*	17.3/20	24/28	25/30	---	---	---	---	---
HKS*06XC*	21.7/25	30/34	30/35	---	---	---	---	---
HKS*08XC*	28.9/33.3	39/44	40/45	---	---	---	---	---
HKS*10XC*	34.7/40	46/53	50/60	---	---	---	---	---
ARUF24B14AA	0/0	2.4/2.4	15/15	---	---	---	---	---
HKS*03XC*	10.8/12.5	16/18	20/20	---	---	---	---	---
HKS*05XC*	17.3/20	24/28	25/30	---	---	---	---	---
HKS*06XC*	21.7/25	30/34	30/35	---	---	---	---	---
HKS*08XC*	28.9/33.3	39/44	40/45	---	---	---	---	---
HKS*10XC*	34.7/40	46/53	50/60	---	---	---	---	---
ARUF30B14AA	0/0	2.4/2.4	15/15	---	---	---	---	---
HKS*03XC*	10.8/12.5	16/18	20/20	---	---	---	---	---
HKS*05XC*	17.3/20	24/28	25/30	---	---	---	---	---
HKS*06XC*	21.7/25	30/34	30/35	---	---	---	---	---
HKS*08XC*	28.9/33.3	39/44	40/45	---	---	---	---	---
HKS*10XC*	34.7/40	46/53	50/60	---	---	---	---	---
HKSC15*##	34.7/40	46/53	50/60	17.3/20	22/25	25/30	68/78	70/80
ARUF30C14BA	0/0	3.8/3.8	15/15	---	---	---	---	---
HKS*03XC*	10.8/12.5	18/20	20/20	---	---	---	---	---
HKS*05XC*	17.3/20	26/29	30/30	---	---	---	---	---
HKS*06XC*	21.7/25	31/35	35/40	---	---	---	---	---
HKS*08XC*	28.9/33.3	40/46	40/50	---	---	---	---	---
HKS*10XC*	34.7/40	48/54	50/60	---	---	---	---	---
HKSC15*##	34.7/40	48/54	50/60	17.3/20	22/25	25/30	70/80	70/80
HKSC19C##	34.7/40	48/54	50/60	34.7/40	44/50	45/60	91/105	100/110
HKSC15XF*	0/0	3.8/3.8	15/15	30/34.6	38/44	40/50	---	---
HKSC20XF*	0/0	3.8/3.8	15/15	37/43	47/54	50/60	---	---
ARUF36C14AA	0/0	3.8/3.8	15/15	---	---	---	---	---
HKS*03XC*	10.8/12.5	18/20	20/20	---	---	---	---	---
HKS*05XC*	17.3/20	26/29	30/30	---	---	---	---	---
HKS*06XC*	21.7/25	31/35	35/40	---	---	---	---	---
HKS*08XC*	28.9/33.3	40/46	40/50	---	---	---	---	---
HKS*10XC*	34.7/40	48/54	50/60	---	---	---	---	---
HKSC15*##	34.7/40	48/54	50/60	17.3/20	22/25	25/30	70/80	70/80
HKSC19C##	34.7/40	48/54	50/60	34.7/40	44/50	45/60	91/105	100/110
HKSC15XF*	0/0	3.8/3.8	15/15	30/34.6	38/44	40/50	---	---
HKSC20XF*	0/0	3.8/3.8	15/15	37/43	47/54	50/60	---	---

¹ Minimum Circuit Ampacity (Heater Amps + Motor Amps) X 1.25

² Maximum Overcurrent Protection = 2.25 X Motor Amps + Heater Amps

* Revision level that may or may not be designated

--- indicates Not Required

AIR HANDLER ELECTRICAL DATA — ARUF-SF WITH HKS ELECTRIC HEAT (CONT.)

MODEL & HEAT KIT USAGE	CIRCUIT 1			CIRCUIT 2			SINGLE-POINT KIT	
	HEATER AMPS	MCA ¹	MOP ²	HEATER AMPS	MCA ¹	MOP ²	MCA ¹	MOP ²
ARUF42C14AA	0/0	3.8/3.8	15/15	---	---	---	---	---
HKS*03XC*	10.8/12.5	18/20	20/20	---	---	---	---	---
HKS*05XC*	17.3/20	26/29	30/30	---	---	---	---	---
HKS*06XC*	21.7/25	32/36	35/40	---	---	---	---	---
HKS*08XC*	28.9/33.3	41/46	45/50	---	---	---	---	---
HKS*10XC*	34.7/40	48/54	50/60	---	---	---	---	---
HKSC15*##	34.7/40	48/54	50/60	17.3/20	22/25	25/30	70/80	70/80
HKSC19C##	34.7/40	48/54	50/60	34.7/40	44/50	45/60	92/105	100/110
HKSC15XF*	0/0	3.8/3.8	15/15	30/34.6	38/44	40/50	---	---
HKSC20XF*	0/0	3.8/3.8	15/15	37/43	47/54	50/60	---	---
ARUF48D14AA	0/0	4.4/ 4.4	15/15	---	---	---	---	---
HKS*03XC*	10.8/12.5	18/20	20/25	---	---	---	---	---
HKS*05XC*	17.3/20	26/30	30/30	---	---	---	---	---
HKS*06XC*	21.7/25	32/36	35/40	---	---	---	---	---
HKS*08XC*	28.9/33.3	41/46	45/50	---	---	---	---	---
HKS*10XC*	34.7/40	48/55	50/60	---	---	---	---	---
HKSC15*##	34.7/40	48/55	50/60	17.3/20	22/25	25/30	71/81	80/90
HKSC20D##	34.7/40	48/55	50/60	34.7/40	44/50	45/60	92/106	100/110
HKSC15XF*	0/0	4.4/ 4.4	15/15	30/34.6	38/44	40/50	---	---
HKSC20XF*	0/0	4.4/ 4.4	15/15	37/43	47/54	50/60	---	---
ARUF60D14AA	0/0	5.8/5.8	15/15	---	---	---	---	---
HKS*03XC*	10.8/12.5	20/22	20/25	---	---	---	---	---
HKS*05XC*	17.3/20	28/31	30/35	---	---	---	---	---
HKS*06XC*	21.7/25	33/37	35/40	---	---	---	---	---
HKS*08XC*	28.9/33.3	42/48	45/50	---	---	---	---	---
HKS*10XC*	34.7/40	50/56	50/60	---	---	---	---	---
HKSC15*##	34.7/40	50/56	50/60	17.3/20	22/25	25/30	72/82	80/90
HKSC20D##	34.7/40	50/56	50/60	34.7/40	44/50	45/60	94/107	100/110
HKSC15XF*	0/0	5.8/5.8	15/15	30/34.6	38/44	40/50	---	---
HKSC20XF*	0/0	5.8/5.8	15/15	37/43	47/54	50/60	---	---
HKSC25DC*	34.7/40	50/56	50/60	52/60	65/75	70/80	116/133	125/150

¹ Minimum Circuit Ampacity (Heater Amps + Motor Amps) X 1.25

² Maximum Overcurrent Protection = 2.25 X Motor Amps + Heater Amps

* Revision level that may or may not be designated

--- indicates Not Required

AIR HANDLER ELECTRICAL DATA — ARUF WITH HKR ELECTRIC HEAT

AIR HANDLER MODEL	MOTOR		VOLTS-HERTZ-PHASE	HEATER KIT	CIRCUIT 1			CIRCUIT 2		
	AMP+	HP			HEATER AMPS	MCA ¹	MOP ²	HEATER AMPS	MCA ¹	MOP ²
ARUF172916AA ARUF172916BA	1.7	1/3	208/240-60-1	-----	0/0	2.1/2.1	15/15	-----	-----	-----
				HKR-03*	10.8/12.5	16/18	20/20	-----	-----	-----
				HKR-05*/-05C*	17.1/19.8	24/27	30/30	-----	-----	-----
				HKR-06*	21.6/25.0	30/34	40/40	-----	-----	-----
				HKR-08*/-08C*	25.2/29.1	34/39	40/40	-----	-----	-----
				HKR-10*/-10C*	34.3/39.6	45/52	60/60	-----	-----	-----
ARUF172916CA	1.9	1/3	208/240-60-1	-----	0/0	2.4/2.4	15/15	-----	-----	-----
				HKR-03*	10.8/12.5	16/18	20/20	-----	-----	-----
				HKR-05*/-05C*	17.2/19.8	24/27	25/30	-----	-----	-----
				HKR-06*	21.7/25.0	29/34	30/35	-----	-----	-----
				HKR-08*/-08C*	25.3/29.2	34/39	35/40	-----	-----	-----
				HKR-10*/-10C*	34.3/39.6	45/52	50/60	-----	-----	-----
ARUF182416AA ARUF182416BA	1.7	1/3	208/240-60-1	-----	0/0	2.1/2.1	15/15	-----	-----	-----
				HKR-03*	10.8/12.5	16/18	20/20	-----	-----	-----
				HKR-05*/-05C*	17.1/19.8	24/27	30/30	-----	-----	-----
				HKR-06*	21.6/25.0	30/34	40/40	-----	-----	-----
				HKR-08*/-08C*	25.2/29.1	34/39	40/40	-----	-----	-----
				HKR-10*/-10C*	34.3/39.6	45/52	60/60	-----	-----	-----
ARUF182416CA	1.9	1/3	208/240-60-1	-----	0/0	2.4/2.4	15/15	-----	-----	-----
				HKR-03*	10.8/12.5	16/18	20/20	-----	-----	-----
				HKR-05*/-05C*	17.2/19.8	24/27	25/30	-----	-----	-----
				HKR-06*	21.7/25.0	29/34	30/35	-----	-----	-----
				HKR-08*/-08C*	25.3/29.2	34/39	35/40	-----	-----	-----
				HKR-10*/-10C*	34.3/39.6	45/52	50/60	-----	-----	-----
ARUF193116AA ARUF193116BA	1.48	1/4	208/240-60-1	-----	0/0	1.9/1.9	15/15	-----	-----	-----
				HKR-03*	10.8/12.5	15/17	20/20	-----	-----	-----
				HKR-05*/-05C*	17.1/19.8	23/27	30/30	-----	-----	-----
				HKR-06*	21.6/25.0	29/33	40/40	-----	-----	-----
				HKR-08*/-08C*	25.2/29.1	33/38	40/40	-----	-----	-----
				HKR-10*/-10C*	34.3/39.6	45/51	60/60	-----	-----	-----
ARUF193116CA	1.48	1/4	208/240-60-1	-----	0/0	1.9/1.9	15/15	-----	-----	-----
				HKR-03*	10.8/12.5	15/17	20/20	-----	-----	-----
				HKR-05*/-05C*	17.2/19.8	23/27	25/30	-----	-----	-----
				HKR-06*	21.7/25.0	29/33	30/35	-----	-----	-----
				HKR-08*/-08C*	25.3/29.2	33/38	35/40	-----	-----	-----
				HKR-10*/-10C*	34.3/39.6	45/51	45/60	-----	-----	-----
ARUF303016AA ARUF303016BA	2.64	1/3	208/240-60-1	-----	0/0	3.3/3.3	15/15	-----	-----	-----
				HKR-03*	10.8/12.5	17/19	20/20	-----	-----	-----
				HKR-05*/-05C*	17.1/19.8	25/28	30/30	-----	-----	-----
				HKR-06*	21.6/25.0	30/35	40/40	-----	-----	-----
				HKR-08*/-08C*	25.2/29.1	35/40	40/40	-----	-----	-----
				-----	-----	-----	-----	-----	-----	-----

See Notes on Page 11.

AIR HANDLER ELECTRICAL DATA — ARUF WITH HKR ELECTRIC HEAT (CONT.)

AIR HANDLER MODEL	MOTOR		VOLTS-HERTZ-PHASE	HEATER KIT	CIRCUIT 1			CIRCUIT 2		
	AMP+	HP			HEATER AMPS	MCA ¹	MOP ²	HEATER AMPS	MCA ¹	MOP ²
ARUF303016AA ARUF303016BA	2.64	1/3	208/240-60-1	HKR-10*/-10C*	34.3/39.6	46/53	60/60	----	----	----
				HKR-15C*	34.3/39.6	46/53	60/60	17.1/19.8	22/25	30/30
				HKR-20C*	34.3/39.6	46/53	60/60	34.3/39.6	43/49	60/60
				HKR-21C*	37.9/43.8	51/58	60/60	37.9/43.8	48/55	60/60
				^HKR3-15*	0/0	3.3/3.3	15/15	31.2/36.1	39/45	60/60
				^HKR3-20*	0/0	3.3/3.3	15/15	40.6/46.9	51/59	60/60
ARUF303016CA	2.64	1/3	208/240-60-1	-----	0/0	3.3/3.3	15/15	----	----	----
				HKR-03*	10.8/12.5	17/19	20/20	----	----	----
				HKR-05*/-05C*	17.2/19.8	25/28	25/30	----	----	----
				HKR-06*	21.7/25.0	30/35	35/35	----	----	----
				HKR-08*/-08C*	25.3/29.2	35/40	35/40	----	----	----
				HKR-10*/-10C*	34.3/39.6	46/53	50/60	----	----	----
				HKR-15C*	34.3/39.6	46/53	50/60	17.2/19.8	21/25	25/25
				HKR-20C*	34.3/39.6	46/53	50/60	34.3/39.6	43/49	45/50
				HKR-21C*	37.9/43.8	51/58	60/60	37.9/43.8	47/55	50/60
				^HKR3-15*	0/0	3.3/3.3	15/15	31.3/36.1	39/45	40/50
ARUF363616AA	2.64	1/3	208/240-60-1	-----	0/0	3.3/3.3	15/15	----	----	----
				HKR-03*	10.8/12.5	17/19	20/20	----	----	----
				HKR-05*/-05C*	17.1/19.8	25/28	30/30	----	----	----
				HKR-06*	21.6/25.0	30/35	40/40	----	----	----
				HKR-08*/-08C*	25.2/29.1	35/40	40/40	----	----	----
				HKR-10*/-10C*	34.3/39.6	46/53	60/60	----	----	----
				HKR-15C*	34.3/39.6	46/53	60/60	17.1/19.8	22/25	30/30
				^HKR3-15*	0/0	3.3/3.3	15/15	31.2/36.1	39/45	60/60
ARUF363616BA	2.64	1/3	208/240-60-1	-----	0/0	3.3/3.3	15/15	----	----	----
				HKR-03*	10.8/12.5	17/19	20/20	----	----	----
				HKR-05*/-05C*	17.1/19.8	25/28	30/30	----	----	----
				HKR-06*	21.6/25.0	30/35	40/40	----	----	----
				HKR-08*/-08C*	25.2/29.1	35/40	40/40	----	----	----
				HKR-10*/-10C*	34.3/39.6	46/53	60/60	----	----	----
				HKR-15C*	34.3/39.6	46/53	60/60	17.1/19.8	22/25	30/30
				^HKR3-15*	0/0	3.3/3.3	15/15	31.2/36.1	39/45	60/60
ARUF363616CA	2.64	1/3	208/240-60-1	-----	0/0	3.3/3.3	15/15	----	----	----
				HKR-03*	10.8/12.5	17/19	20/20	----	----	----
				HKR-05*/-05C*	17.2/19.8	25/28	25/30	----	----	----
				HKR-06*	21.7/25.0	30/35	35/35	----	----	----
				HKR-08*/-08C*	25.3/29.2	35/40	35/40	----	----	----
				HKR-10*/-10C*	34.3/39.6	46/53	50/60	----	----	----
				HKR-15C*	34.3/39.6	46/53	50/60	17.2/19.8	21/25	25/25
				^HKR3-15*	0/0	3.3/3.3	15/15	31.3/36.1	39/45	40/50
ARUF364216AA ARUF364216AB ARUF364216AC	2.95	1/2	208/240-60-1	-----	0/0	3.7/3.7	15/15	----	----	----
				HKR-03*	10.8/12.5	17/19	20/20	----	----	----
				HKR-05*/-05C*	17.1/19.8	25/28	30/30	----	----	----
				HKR-06*	21.6/25.0	31/35	40/40	----	----	----
				HKR-08*/-08C*	25.2/29.1	35/40	40/40	----	----	----
HKR-10*/-10C*	34.3/39.6	47/53	60/60	----	----	----				

See Notes on Page 11.

AIR HANDLER ELECTRICAL DATA — ARUF WITH HKR ELECTRIC HEAT (CONT.)

AIR HANDLER MODEL	MOTOR		VOLTS-HERTZ-PHASE	HEATER KIT	CIRCUIT 1			CIRCUIT 2		
	AMP+	HP			HEATER AMPS	MCA ¹	MOP ²	HEATER AMPS	MCA ¹	MOP ²
ARUF364216AA	2.95	1/2	208/240-60-1	HKR-15C*	34.3/39.6	47/53	60/60	17.1/19.8	22/25	30/30
ARUF364216AB				HKR-20C*	34.3/39.6	47/53	60/60	34.3/39.6	43/49	60/60
ARUF364216AC				HKR-21C*	37.9/43.8	51/58	60/60	37.9/43.8	48/55	60/60
				^HKR3-15*	0/0	3.7/3.7	15/15	31.2/36.1	39/45	60/60
				^HKR3-20*	0/0	3.7/3.7	15/15	40.6/46.9	51/59	60/60
ARUF364216BA	2.95	1/2	208/240-60-1	-----	0/0	3.7/3.7	15/15	-----	-----	-----
				HKR-03*	10.8/12.5	17/19	20/20	-----	-----	-----
				HKR-05*/-05C*	17.1/19.8	25/28	30/30	-----	-----	-----
				HKR-06*	21.6/25.0	31/35	40/40	-----	-----	-----
				HKR-08*/-08C*	25.2/29.1	35/40	40/40	-----	-----	-----
				HKR-10*/-10C*	34.3/39.6	47/53	60/60	-----	-----	-----
				HKR-15C*	34.3/39.6	47/53	60/60	17.1/19.8	22/25	30/30
				HKR-20C*	34.3/39.6	47/53	60/60	34.3/39.6	43/49	60/60
				HKR-21C*	37.9/43.8	51/58	60/60	37.9/43.8	48/55	60/60
				^HKR3-15*	0/0	3.7/3.7	15/15	31.2/36.1	39/45	60/60
				^HKR3-20*	0/0	3.7/3.7	15/15	40.6/46.9	51/59	60/60
ARUF364216CA	3.12	1/2	208/240-60-1	-----	0/0	3.7/3.9	15/15	-----	-----	-----
				HKR-03*	10.8/12.5	17/20	20/20	-----	-----	-----
				HKR-05*/-05C*	17.2/19.8	25/29	30/30	-----	-----	-----
				HKR-06*	21.7/25.0	31/35	35/40	-----	-----	-----
				HKR-08*/-08C*	25.3/29.2	35/40	40/45	-----	-----	-----
				HKR-10*/-10C*	34.3/39.6	47/53	50/60	-----	-----	-----
				HKR-15C*	34.3/39.6	47/53	50/60	17.1/19.8	21/25	25/25
				HKR-20C*	34.3/39.6	47/53	50/60	34.3/39.6	43/49	45/50
				HKR-21C*	37.9/43.8	51/59	60/60	37.9/43.8	47/55	50/60
				^HKR3-15*	0/0	3.7/3.9	15/15	31.3/36.1	39/45	40/50
				^HKR3-20*	0/0	3.7/3.9	15/15	40.7/46.9	51/59	60/60
ARUF374316AA	3.39	1/2	208/240-60-1	-----	0/0	4.2/4.2	15/15	-----	-----	-----
ARUF374316BA				HKR-03*	10.8/12.5	18/20	20/20	-----	-----	-----
				HKR-05*/-05C*	17.1/19.8	26/29	30/30	-----	-----	-----
				HKR-06*	21.6/25.0	31/35	40/40	-----	-----	-----
				HKR-08*/-08C*	25.2/29.1	36/41	40/40	-----	-----	-----
				HKR-10*/-10C*	34.3/39.6	47/54	60/60	-----	-----	-----
				HKR-15C*	34.3/39.6	47/54	60/60	17.1/19.8	22/25	30/30
				HKR-20C*	34.3/39.6	47/54	60/60	34.3/39.6	43/49	60/60
				HKR-21C*	37.9/43.8	52/59	60/60	37.9/43.8	48/55	60/60
				^HKR3-15*	0/0	4.2/4.2	15/15	31.2/36.1	39/45	60/60
				^HKR3-20*	0/0	4.2/4.2	15/15	40.6/46.9	51/59	60/60
ARUF374316CA	3.39	1/2	208/240-60-1	-----	0/0	4.2/4.2	15/15	-----	-----	-----
				HKR-03*	10.8/12.5	18/20	20/20	-----	-----	-----
				HKR-05*/-05C*	17.2/19.8	26/29	30/30	-----	-----	-----
				HKR-06*	21.7/25.0	31/35	35/40	-----	-----	-----
				HKR-08*/-08C*	25.3/29.2	36/41	40/45	-----	-----	-----
				HKR-10*/-10C*	34.3/39.6	47/54	50/60	-----	-----	-----

See Notes on Page 16.

AIR HANDLER ELECTRICAL DATA — ARUF WITH HKR ELECTRIC HEAT (CONT.)

AIR HANDLER MODEL	MOTOR		VOLTS-HERTZ-PHASE	HEATER KIT	CIRCUIT 1			CIRCUIT 2		
	AMP+	HP			HEATER AMPS	MCA ¹	MOP ²	HEATER AMPS	MCA ¹	MOP ²
ARUF374316CA	3.39	1/2	208/240-60-1	HKR-15C*	34.3/39.6	47/54	50/60	17.2/19.8	21/25	25/25
				HKR-20C*	34.3/39.6	47/54	50/60	34.3/39.6	43/49	45/50
				HKR-21C*	37.9/43.8	52/59	60/60	37.9/43.8	47/55	50/60
				^HKR3-15*	0/0	4.2/4.2	15/15	31.3/36.1	39/45	40/50
				^HKR3-20*	0/0	4.2/4.2	15/15	40.7/46.9	51/59	60/60
ARUF486016AA ARUF486016AB ARUF486016BA	4.3	3/4	208/240-60-1	-----	0/0	5.4/5.4	15/15	-----	-----	-----
				HKR-03*	10.8/12.5	19/21	20/20	-----	-----	-----
				HKR-05*/-05C*	17.1/19.8	27/30	30/30	-----	-----	-----
				HKR-06*	21.6/25.0	32/37	40/40	-----	-----	-----
				HKR-08*/-08C*	25.2/29.1	37/39	40/40	-----	-----	-----
				HKR-10*/-10C*	34.3/39.6	48/55	60/60	-----	-----	-----
				HKR-15C*	34.3/39.6	48/55	60/60	17.1/19.8	22/25	30/30
				HKR-20C*	34.3/39.6	48/55	60/60	34.3/39.6	43/49	60/60
				HKR-21C*	37.9/43.8	53/59	60/60	37.9/43.8	48/55	60/60
				^HKR3-15*	0/0	5.4/5.4	15/15	31.2/36.1	39/45	60/60
				^HKR3-20*	0/0	5.4/5.4	15/15	40.6/46.9	51/59	60/60
ARUF486016CA	4.06	3/4	208/240-60-1	-----	0/0	5.1/5.1	15/15	-----	-----	-----
				HKR-03*	10.8/12.5	19/21	20/25	-----	-----	-----
				HKR-05*/-05C*	17.2/19.8	27/30	30/30	-----	-----	-----
				HKR-06*	21.7/25	32/36	35/40	-----	-----	-----
				HKR-08*/-08C*	25.3/29.2	37/42	40/45	-----	-----	-----
				HKR-10*/-10C*	34.3/39.6	48/55	50/60	-----	-----	-----
				HKR-15C*	34.3/39.6	48/55	50/60	17.2/19.8	21/25	25/25
				HKR-20C*	34.3/39.6	48/55	50/60	34.3/39.6	43/49	45/50
				HKR-21C*	37.9/43.8	52/60	60/60	37.9/43.8	47/55	50/60
				^HKR3-15*	0/0	5.1/5.1	15/15	31.3/36.1	39/45	40/50
				^HKR3-20*	0/0	5.1/5.1	15/15	40.7/46.9	51/59	60/60
ARUF496116AA	4.3	3/4	208/240-60-1	-----	0/0	5.4/5.4	15/15	-----	-----	-----
				HKR-03*	10.8/12.5	19/21	20/20	-----	-----	-----
				HKR-05*/-05C*	17.1/19.8	27/30	30/30	-----	-----	-----
				HKR-06*	21.6/25.0	32/37	40/40	-----	-----	-----
				HKR-08*/-08C*	25.2/29.1	37/39	40/40	-----	-----	-----
				HKR-10*/-10C*	34.3/39.6	48/55	60/60	-----	-----	-----
				HKR-15C*	34.3/39.6	48/55	60/60	17.1/19.8	22/25	30/30
				HKR-20C*	34.3/39.6	48/55	60/60	34.3/39.6	43/49	60/60
				HKR-21C*	37.9/43.8	53/59	60/60	37.9/43.8	48/55	60/60
				HKR3-15*	0/0	5.4/5.4	15/15	31.2/36.1	39/45	60/60
				HKR3-20*	0/0	5.4/5.4	15/15	40.6/46.9	51/59	60/60
ARUF496116CA	4.06	3/4	208/240-60-1	-----	0/0	5.1/5.1	15/15	-----	-----	-----
				HKR-03*	10.8/12.5	19/21	20/25	-----	-----	-----
				HKR-05*/-05C*	17.2/19.8	27/30	30/30	-----	-----	-----
				HKR-06*	21.7/25.0	32/36	35/40	-----	-----	-----
				HKR-08*/-08C*	25.3/29.2	37/42	40/45	-----	-----	-----
				HKR-10*/-10C*	34.3/39.6	48/55	50/60	-----	-----	-----
				HKR-15C*	34.3/39.6	48/55	50/60	17.2/19.8	21/25	25/25
				HKR-20C*	34.3/39.6	48/55	50/60	34.3/39.6	43/49	45/50
				HKR-21C*	37.9/43.8	52/60	60/60	37.9/43.8	47/55	50/60
				^HKR3-15*	0/0	5.1/5.1	15/15	31.3/36.1	39/45	40/50
				^HKR3-20*	0/0	5.1/5.1	15/15	40.7/46.9	51/59	60/60

See Notes on the following page.

AIR HANDLER ELECTRICAL DATA — ASUF

MODEL & HEAT KIT USAGE	CIRCUIT 1			CIRCUIT 2			SINGLE-POINT KIT	
	HEATER AMPS	MCA ¹	MOP ²	HEATER AMPS	MCA ¹	MOP ²	MCA ¹	MOP ²
ASUF29B14	0 / 0	3 / 3	15 / 15	---	---	---	---	---
HKS*03XC*	10.8 / 12.5	16 / 18	20 / 20	---	---	---	--	--
HKS*05XC*	17.3 / 20.0	24 / 28	25 / 30	---	---	---	--	--
HKS*06XC*	21.7 / 25.0	30 / 34	30 / 35	---	---	---	--	--
HKS*08XC*	28.9 / 33.3	39 / 44	40 / 45	---	---	---	--	--
HKS*10XC*	34.7 / 40.0	46 / 53	50 / 60	---	---	---	--	--
HKSC15*##	34.7 / 40.0	46 / 53	50 / 60	17.3 / 20	22 / 25	25 / 25	68 / 78	70 / 80
ASUF39C14	0 / 0	4 / 4	15 / 15	---	---	---	--	--
HKS*03XC*	10.8 / 12.5	17 / 20	20 / 20	---	---	---	--	--
HKS*05XC*	17.3 / 20.0	26 / 29	30 / 30	---	---	---	--	--
HKS*06XC*	21.7 / 25.0	31 / 35	35 / 40	---	---	---	--	--
HKS*08XC*	28.9 / 33.3	40 / 46	45 / 50	---	---	---	--	--
HKS*10XC*	34.7 / 40.0	47 / 54	50 / 60	---	---	---	--	--
HKSC15*##	34.7 / 40.0	47 / 54	50 / 60	17.3 / 20	22 / 25	25 / 25	69 / 79	70 / 80
HKSC19*##	34.3 / 40.0	47 / 54	50 / 60	34.7 / 40	43 / 50	45 / 50	91 / 104	100 / 110
HKSC15XF*	0/0	4 / 4	15/15	30/34.6	38/43	40/45	--	--
HKSC20XF*	0/0	4 / 4	15/15	37/43	46/54	50/60	--	--
ASUF49C14	0 / 0	7 / 7	15 / 15	---	---	---	--	--
HKS*03XC*	10.8 / 12.5	20 / 22	20 / 25	---	---	---	--	--
HKS*05XC*	17.3 / 20.0	28 / 32	30 / 35	---	---	---	--	--
HKS*06XC*	21.7 / 25.0	34 / 38	35 / 40	---	---	---	--	--
HKS*08XC*	28.9 / 33.3	43 / 48	45 / 50	---	---	---	--	--
HKS*10XC*	34.7 / 40.0	50 / 57	60 / 60	---	---	---	--	--
HKSC15*##	34.7 / 40.0	50 / 57	60 / 60	17.3 / 20	22 / 25	25 / 25	72 / 82	80 / 90
HKSC19C#*	34.3 / 40.0	50 / 57	60 / 60	34.7 / 40	43 / 50	45 / 50	93 / 107	100 / 110
HKSC15XF*	0/0	7 / 7	15/15	30/34.6	38/43	40/50	--	--
HKSC20XF*	0/0	7 / 7	15/15	37/43	46/54	50/60	--	--
ASUF59D14	0 / 0	8 / 8	15 / 15	---	---	---	--	--
HKS*03XC*	10.8 / 12.5	22 / 24	25 / 25	---	---	---	--	--
HKS*05XC*	17.3 / 20.0	30 / 33	30 / 35	---	---	---	--	--
HKS*06XC*	21.7 / 25.0	35 / 40	40 / 40	---	---	---	--	--
HKS*08XC*	28.9 / 33.3	44 / 50	45 / 50	---	---	---	--	--
HKS*10XC*	34.7 / 40.0	52 / 58	60 / 60	---	---	---	--	--
HKSC15*##	34.7 / 40.0	52 / 58	60 / 60	17.3 / 20	22 / 25	25 / 25	73 / 83	80 / 90
HKSC20D#*	34.3 / 39.6	52 / 58	60 / 60	34.7 / 40	43 / 50	45 / 50	95 / 108	100 / 110
HKSC15XF*	0/0	8 / 8	15/15	30/34.6	38 / 43	40 / 50	--	--
HKSC20XF*	0/0	8 / 8	15/15	37/43	46 / 54	50 / 60	--	--
HKSC25DC*	34.7 40	52 / 58	60 / 60	52 / 60	69 / 75	70 / 80	117 / 133	125 / 150

¹ Minimum Circuit Ampacity (Heater Amps + Motor Amps) X 1.25

² Maximum Overcurrent Protection = 2.25 X Motor Amps + Heater Amps

[^] Circuit 1: Single-phase for Air Handlers Circuit 2: Three-phase for HKR3 Heater Kits

* Revision level that may or may not be designated

C = Circuit Breaker Option

--- indicates Not Required

AIR HANDLER ELECTRICAL DATA — ASPT

MODEL & HEAT KIT USAGE	CIRCUIT 1			CIRCUIT 2			SINGLE-POINT KIT	
	HEATER AMPS	MCA ¹	MOP ²	HEATER AMPS	MCA ¹	MOP ²	MCA ¹	MOP ²
ASPT24B14	0 / 0	3.1 / 3.1	15 / 15	---	---	---	---	---
HKS*03XC*	10.8 / 12.5	17 / 19	20 / 20	---	---	---	--	--
HKS*05XC*	17.3 / 20.0	25 / 28	30 / 30	---	---	---	--	--
HKS*06XC*	21.6 / 25.0	30 / 34	35 / 35	---	---	---	--	--
HKS*08XC*	25.3 / 33.3	39 / 45	40 / 45	---	---	---	--	--
HKS*10XC*	34.7 / 40.0	46 / 53	50 / 60	---	---	---	--	--
HKSC15*##	34.7 / 40.0	46 / 53	50 / 60	17.2 / 19.8	22 / 25	25 / 25	68 / 78	70 / 80
ASPT30C14	0 / 0	3.9 / 3.9	15 / 15	---	---	---	---	---
HKS*03XC*	10.8 / 12.5	17 / 20	20 / 20	---	---	---	--	--
HKS*05XC*	17.3 / 20.0	26 / 29	30 / 30	---	---	---	--	--
HKS*06XC*	21.6 / 25.0	31 / 35	35 / 40	---	---	---	--	--
HKS*08XC*	25.3 / 33.3	40 / 46	40 / 50	---	---	---	--	--
HKS*10XC*	34.7 / 40.0	47 / 54	50 / 60	---	---	---	--	--
HKSC15*##	34.7 / 40.0	47 / 54	50 / 60	17.2 / 19.8	22 / 25	25 / 25	69 / 79	70 / 80
ASPT36C14	0 / 0	3.9 / 3.9	15 / 15	---	---	---	--	--
HKS*03XC*	10.8 / 12.5	17 / 20	20 / 20	---	---	---	--	--
HKS*05XC*	17.3 / 20.0	26 / 29	30 / 30	---	---	---	--	--
HKS*06XC*	21.6 / 25.0	31 / 35	40 / 40	---	---	---	--	--
HKS*08XC*	25.3 / 33.3	40 / 46	40 / 40	---	---	---	--	--
HKS*10XC*	34.7 / 40.0	47 / 54	60 / 60	---	---	---	--	--
HKSC15*##	34.7 / 40.0	47 / 54	60 / 60	17.2 / 19.8	22 / 25	25 / 25	69 / 79	70 / 80
HKSC19*##	34.3 / 39.6	47 / 54	60 / 60	34.3 / 39.6	43 / 50	45 / 50	91 / 104	100 / 110
HKSC15XF*	0/0	3.9 / 3.9	15/15	30/34.6	38/44	40/50	--	--
HKSC20XF*	0/0	3.9 / 3.9	15/15	37/43	47/54	50/60	--	--
ASPT42D14	0 / 0	6.1 / 6.1	15 / 15	---	---	---	--	--
HKS*03XC*	10.8 / 12.5	20 / 22	20 / 25	---	---	---	--	--
HKS*05XC*	17.3 / 20.0	28 / 31	30 / 35	---	---	---	--	--
HKS*06XC*	21.6 / 25.0	33 / 37	35 / 40	---	---	---	--	--
HKS*08XC*	25.3 / 33.3	42 / 48	45 / 50	---	---	---	--	--
HKS*10XC*	34.7 / 40.0	49 / 56	50 / 60	---	---	---	--	--
HKSC15*##	34.7 / 40.0	49 / 56	50 / 60	17.2 / 19.8	22 / 25	25 / 25	71 / 81	80 / 90
HKSC20*##	34.3 / 39.6	49 / 56	50 / 60	34.3 / 39.6	43 / 50	45 / 50	93 / 106	100 / 110
HKSC15XF*	0/0	6.1 / 6.1	15/15	30/34.6	38/44	40/50	--	--
HKSC20XF*	0/0	6.1 / 6.1	15/15	37/43	47/54	50/60	--	--

¹ Minimum Circuit Ampacity (Heater Amps + Motor Amps) X 1.25
² Maximum Overcurrent Protection = 2.25 X Motor Amps + Heater Amps
[^] Circuit 1: Single-phase for Air Handlers Circuit 2: Three-phase for HKR3 Heater Kits
* Revision level that may or may not be designated
C = Circuit Breaker Option
--- indicates Not Required

AIR HANDLER ELECTRICAL DATA — ASPT (CONT.)

MODEL & HEAT KIT USAGE	CIRCUIT 1			CIRCUIT 2			SINGLE-POINT KIT	
	HEATER AMPS	MCA ¹	MOP ²	HEATER AMPS	MCA ¹	MOP ²	MCA ¹	MOP ²
ASPT48D14	0 / 0	8.3 / 8.3	15 / 15	---	---	---	--	--
HKS*03XC*	10.8 / 12.5	22 / 24	25 / 25	---	---	---	--	--
HKS*05XC*	17.3 / 20.0	30 / 33	30 / 35	---	---	---	--	--
HKS*06XC*	21.6 / 25.0	35 / 40	40 / 40	---	---	---	--	--
HKS*08XC*	25.3 / 33.3	44 / 50	45 / 50	---	---	---	--	--
HKS*10XC*	34.7 / 40.0	52 / 58	60 / 60	---	---	---	--	--
HKSC15*##	34.7 / 40.0	52 / 58	60 / 60	17.2 / 19.8	22 / 25	25 / 25	73 / 83	80 / 90
HKSC20*##	34.3 / 39.6	52 / 58	60 / 60	34.3 / 39.6	43 / 50	45 / 50	95 / 108	100 / 110
HKSC15XF*	0/0	8.3 / 8.3	15/15	30/34.6	38/44	40/50	--	--
HKSC20XF*	0/0	8.3 / 8.3	15/15	37/43	47/54	50/60	--	--
HKSC25*##	52 / 60	73 / 83	80 / 90	34.7 / 40	43 / 50	45 / 50	117 / 133	125 / 150
ASPT60D14	0 / 0	8.3 / 8.3	15 / 15	---	---	---	--	--
HKS*03XC*	10.8 / 12.5	22 / 24	25 / 25	---	---	---	--	--
HKS*05XC*	17.3 / 20.0	30 / 33	30 / 35	---	---	---	--	--
HKS*06XC*	21.6 / 25.0	35 / 40	40 / 40	---	---	---	--	--
HKS*08XC*	25.3 / 33.3	44 / 50	45 / 50	---	---	---	--	--
HKS*10XC*	34.7 / 40.0	52 / 58	60 / 60	---	---	---	--	--
HKSC15*##	34.7 / 40.0	52 / 58	60 / 60	17.2 / 19.8	22 / 25	25 / 25	73 / 83	80 / 90
HKSC20*##	34.3 / 39.6	52 / 58	60 / 60	34.3 / 39.6	43 / 50	45 / 50	95 / 108	100 / 110
HKSC15XF*	0/0	8.3 / 8.3	15/15	30/34.6	38/44	40/50	--	--
HKSC20XF*	0/0	8.3 / 8.3	15/15	37/43	47/54	50/60	--	--
HKSC25*##	52 / 60	73 / 83	80 / 90	34.7 / 40	43 / 50	45 / 50	117 / 133	125 / 150

¹ Minimum Circuit Ampacity (Heater Amps + Motor Amps) X 1.25

² Maximum Overcurrent Protection = 2.25 X Motor Amps + Heater Amps

[^] Circuit 1: Single-phase for Air Handlers Circuit 2: Three-phase for HKR3 Heater Kits

* Revision level that may or may not be designated

C = Circuit Breaker Option

--- indicates Not Required

AIR HANDLER ELECTRICAL DATA — ASPF

MODEL & HEAT KIT USAGE	CIRCUIT 1			CIRCUIT 2			SINGLE-POINT KIT	
	HEATER AMPS	MCA ¹	MOP ²	HEATER AMPS	MCA ¹	MOP ²	MCA ¹	MOP ²
ASPF183016B*	0 / 0	3.1 / 3.1	15 / 15	---	---	---	---	---
HKR-03*	10.8 / 12.5	17 / 19	20 / 20	---	---	---	--	--
HKR-05* / -05C*	17.1 / 19.8	27 / 30	30 / 30	---	---	---	--	--
HKR-06*	21.6 / 25.0	32 / 37	40 / 40	---	---	---	--	--
HKR-08* / -08C*	25.3 / 29.2	37 / 39	40 / 40	---	---	---	--	--
HKR-10* / -10C*	34.3 / 39.6	48 / 55	60 / 60	---	---	---	--	--
HKA-15C*	34.3 / 39.6	46 / 53	60 / 60	17.2 / 19.8	21 / 25	30 / 30	67/77	70 / 80
^HKR3-15*	0 / 0	3.1 / 3.1	15 / 15	31.2 / 36.1	39 / 45	60 / 60	--	--
ASPF183016D*	0 / 0	3.6 / 3.6	15 / 15	---	---	---	---	---
HKR-03*	10.8 / 12.5	17 / 19	20 / 20	---	---	---	--	--
HKR-05* / -05C*	17.2 / 19.8	25 / 28	30 / 30	---	---	---	--	--
HKR-06*	21.6 / 25.0	31 / 35	35 / 35	---	---	---	--	--
HKR-08* / -08C*	25.3 / 29.2	35 / 40	40 / 45	---	---	---	--	--
HKR-10* / -10C*	34.3 / 39.6	47 / 53	50 / 60	---	---	---	--	--
HKA-15C*	34.3 / 39.6	47 / 53	50 / 60	17.2 / 19.8	21 / 25	25 / 25	68/78	70 / 80
^HKR3-15*	0 / 0	3.6 / 3.6	15 / 15	31.2 / 36.1	39 / 45	40 / 50	--	--
ASPF303616**	0 / 0	3.8 / 3.8	15 / 15	---	---	---	--	--
HKR-03*	10.8 / 12.5	15 / 17	20 / 20	---	---	---	--	--
HKR-05* / -05C*	17.1 / 19.8	24 / 27	30 / 30	---	---	---	--	--
HKR-06*	21.6 / 25.0	32 / 37	40 / 40	---	---	---	--	--
HKR-08* / -08C*	25.3 / 29.2	35 / 40	40 / 40	---	---	---	--	--
HKR-10* / -10C*	34.3 / 39.6	48 / 55	60 / 60	---	---	---	--	--
HKA-15C*	34.3 / 39.6	46 / 53	60 / 60	17.2 / 19.8	21 / 25	30 / 30	68/78	70 / 80
HKA-20C*	34.3 / 39.6	51 / 57	60 / 60	34.3 / 39.6	43 / 50	60 / 60	90/103	90 / 110
^HKR3-15*	0 / 0	3.8 / 3.8	15 / 15	31.2 / 36.1	39 / 45	60 / 60	--	--
^HKR3-20*	0 / 0	3.8 / 3.8	15 / 15	40.6 / 46.9	51 / 59	60 / 60	--	--
ASPF313716A*	0 / 0	3.8 / 3.8	15 / 15	---	---	---	---	---
HKR-03*	10.8 / 12.5	15 / 17	20 / 20	---	---	---	---	---
HKR-05* / -05C*	17.1 / 19.8	24 / 27	30 / 30	---	---	---	---	---
HKR-06*	21.6 / 25.0	32 / 37	40 / 40	---	---	---	---	---
HKR-08* / -08C*	25.3 / 29.2	35 / 40	40 / 40	---	---	---	---	---
HKR-10* / -10C*	34.3 / 39.6	48 / 55	60 / 60	---	---	---	---	---
HKA-15C*	34.3 / 39.6	46 / 53	60 / 60	17.2 / 19.8	21 / 25	30 / 30	68/78	70 / 80
HKA-20C*	34.3 / 39.6	51 / 57	60 / 60	34.3 / 39.6	43 / 50	60 / 60	90/103	90 / 110
^HKR3-15*	0 / 0	3.8 / 3.8	15 / 15	31.2 / 36.1	39 / 45	60 / 60	--	--
^HKR3-20*	0 / 0	3.8 / 3.8	15 / 15	40.6 / 46.9	51 / 59	60 / 60	--	--

¹ Minimum Circuit Ampacity @ 208 / 240 V

² Maximum Overcurrent Protection Device @ 208 / 240 V

* Revision level that may or may not be designated

C Circuit breaker option CA is for 208V and CB is for 240V

--- indicates Not Required

^ Heat Kit requires three-phase power supply

Note: All HKR ampacities noted above include air handler motor amps, excluding three-phase models.

AIR HANDLER ELECTRICAL DATA — ASPF (CONT.)

MODEL & HEAT KIT USAGE	CIRCUIT 1			CIRCUIT 2			SINGLE-POINT KIT	
	HEATER AMPS	MCA ¹	MOP ²	HEATER AMPS	MCA ¹	MOP ²	MCA ¹	MOP ²
ASPF313716D*	0 / 0	3.9 / 3.9	15 / 15	---	---	---	---	---
HKR-03*	10.8 / 12.5	17 / 20	20 / 20	---	---	---	---	---
HKR-05* / -05C*	17.2 / 19.8	25 / 29	30 / 30	---	---	---	---	---
HKR-06*	21.6 / 25.0	31 / 35	35 / 40	---	---	---	---	---
HKR-08* / -08C*	25.3 / 29.2	35 / 40	40 / 45	---	---	---	---	---
HKR-10* / -10C*	34.3 / 39.6	47 / 53	50 / 60	---	---	---	---	---
HKA-15C*	34.3 / 39.6	47 / 53	50 / 60	17.2 / 19.8	21 / 25	25 / 25	68/78	70 / 80
HKA-20C*	34.3 / 39.6	47 / 53	50 / 60	34.3 / 39.6	43 / 49	45 / 50	90/103	90 / 110
^HKR3-15*	0 / 0	3.9 / 3.9	15 / 15	31.2 / 36.1	39 / 45	40 / 50	--	--
^HKR3-20*	0 / 0	3.9 / 3.9	15 / 15	40.6 / 46.9	51 / 59	60 / 60	--	--
ASPF426016B*	0 / 0	5.3 / 5.3	15 / 15	---	---	---	---	---
HKR-03*	10.8 / 12.5	15 / 17	20 / 20	---	---	---	---	---
HKR-05* / -05C*	17.1 / 19.8	24 / 27	30 / 30	---	---	---	---	---
HKR-06*	21.6 / 25.0	32 / 37	40 / 40	---	---	---	---	---
HKR-08* / -08C*	25.3 / 29.2	35 / 40	40 / 40	---	---	---	---	---
HKR-10* / -10C*	34.3 / 39.6	46 / 53	60 / 60	---	---	---	---	---
HKA-15C*	34.3 / 39.6	51 / 57	60 / 60	17.2 / 19.8	21 / 25	30 / 30	70/80	70 / 80
HKA-20C*	34.3 / 39.6	51 / 57	60 / 60	34.3 / 39.6	43 / 50	60 / 60	91/104	100 / 110
^HKR3-15*	0 / 0	5.3 / 5.3	15 / 15	31.2 / 36.1	39 / 45	60 / 60	--	--
^HKR3-20*	0 / 0	5.3 / 5.3	15 / 15	40.6 / 46.9	51 / 59	60 / 60	--	--
ASPF426016D*	0 / 0	6.4 / 6.4	15 / 15	---	---	---	---	---
HKR-03*	10.8 / 12.5	20 / 22	20 / 25	---	---	---	---	---
HKR-05* / -05C*	17.2 / 19.8	28 / 31	30 / 35	---	---	---	---	---
HKR-06*	21.6 / 25.0	33 / 38	35 / 40	---	---	---	---	---
HKR-08* / -08C*	25.3 / 29.2	38 / 43	40 / 45	---	---	---	---	---
HKR-10* / -10C*	34.3 / 39.6	49 / 56	50 / 60	---	---	---	---	---
HKA-15C*	34.3 / 39.6	49 / 56	50 / 60	17.2 / 19.8	21 / 25	25 / 25	71/81	80 / 90
HKA-20C*	34.3 / 39.6	49 / 56	50 / 60	34.3 / 39.6	43 / 49	45 / 50	92/105	100 / 110
^HKR3-15*	0 / 0	6.4 / 6.4	15 / 15	31.2 / 36.1	39 / 45	40 / 50	--	--
^HKR3-20*	0 / 0	6.4 / 6.4	15 / 15	40.6 / 46.9	51 / 59	60 / 60	--	--

¹ Minimum Circuit Ampacity @ 208 / 240 V

² Maximum Overcurrent Protection Device @ 208 / 240 V

* Revision level that may or may not be designated

C Circuit breaker option CA is for 208V and CB is for 240V

--- indicates Not Required

^ Heat Kit requires three-phase power supply

Note: HKA meets the new UL1995 requirements for 15 and 20KW heaters

AIR HANDLER ELECTRICAL DATA — MBVC

MODEL & HEAT KIT USAGE	CIRCUIT 1			CIRCUIT 2			SINGLE-POINT KIT	
	HEATER AMPS	MCA ¹	MOP ²	HEATER AMPS	MCA ¹	MOP ²	MCA ¹	MOP ²
MBVC1200AA-1A*	0 / 0	4.3 / 4.3	15 / 15	---	---	---	---	---
HKR-03*	10.8 / 12.5	17.8 / 19.9	20 / 20	---	---	---	---	---
HKR-05* / 05C*	17.2 / 19.8	25.7 / 29.0	30 / 30	---	---	---	---	---
HKR-06*	21.7 / 25.0	31.3 / 35.5	35 / 40	---	---	---	---	---
HKR-08* / -08C*	25.3 / 29.2	35.8 / 40.7	40 / 45	---	---	---	---	---
HKR-10* / -10C*	34.3 / 39.6	47.1 / 53.7	50 / 60	---	---	---	---	---
HKA-15C*	34.3 / 39.6	47.1 / 53.7	50 / 60	17.2 / 19.8	21.4 / 24.7	25 / 25	69/79	70 / 80
MBVC1600AA-1A*	0 / 0	6.3 / 6.3	15 / 15	---	---	---	---	---
HKR-03*	10.8 / 12.5	19.8 / 21.9	20 / 25	---	---	---	---	---
HKR-05* / 05C*	17.2 / 19.8	27.7 / 31.0	30 / 35	---	---	---	---	---
HKR-06*	21.7 / 25.0	33.3 / 37.5	35 / 40	---	---	---	---	---
HKR-08* / -08C*	25.3 / 29.2	37.8 / 42.7	40 / 45	---	---	---	---	---
HKR-10* / -10C*	34.3 / 39.6	49.1 / 55.7	50 / 60	---	---	---	---	---
HKA-15C*	34.3 / 39.6	49.1 / 55.7	50 / 60	17.2 / 19.8	21.4 / 24.7	25 / 25	71/81	80 / 90
MBVC2000AA-1A*	0 / 0	5.8 / 5.8	15 / 15	---	---	---	---	---
HKR-03*	10.8 / 12.5	19.3 / 21.4	20 / 25	---	---	---	---	---
HKR-05* / 05C*	17.2 / 19.8	27.2 / 30.5	30 / 35	---	---	---	---	---
HKR-06*	21.7 / 25.0	32.8 / 37.0	35 / 40	---	---	---	---	---
HKR-08* / -08C*	25.3 / 29.2	37.3 / 42.2	40 / 45	---	---	---	---	---
HKR-10* / -10C*	34.3 / 39.6	48.6 / 55.2	50 / 60	---	---	---	---	---
HKA-15C*	34.3 / 39.6	48.6 / 55.2	50 / 60	17.2 / 19.8	21.4 / 24.7	25 / 25	70/80	80 / 90
HKA-20C*	34.3 / 39.6	48.6 / 55.2	50 / 60	34.3 / 39.6	42.9 / 49.5	45 / 50	92/105	100 / 110

¹ Minimum Circuit Ampacity @ 208 / 240 V

² Maximum Overcurrent Protection Device @ 208 / 240 V

* Revision level that may or may not be designated

C = Circuit Breaker Option CA is for 208V and CB is for 240V

^ Heat Kit requires three-phase power supply

--- indicates Not Required

Note: All HKR ampacities noted above include air handler motor amps, excluding three-phase models.

AIR HANDLER ELECTRICAL DATA — MBR

MODEL & HEAT KIT USAGE	CIRCUIT 1			CIRCUIT 2			SINGLE-POINT KIT	
	HEATER AMPS	MCA ¹	MOP ²	HEATER AMPS	MCA ¹	MOP ²	MCA ¹	MOP ²
MBR0800AA-1 **	0 / 0	1.9 / 1.9	15 / 15	---	---	---	---	---
HKR-03*	10.8 / 12.5	15 / 17	20 / 20	---	---	---	---	---
HKR-05* / 05C*	17.1 / 19.8	23 / 26	30 / 30	---	---	---	---	---
HKR-06*	21.6 / 25.0	29 / 33	40 / 40	---	---	---	---	---
HKR-08* / -08C*	25.3 / 29.2	33 / 38	40 / 40	---	---	---	---	---
HKR-10* / -10C*	34.3 / 39.6	44 / 51	60 / 60	---	---	---	---	---
MBR1200AA-1 **	0 / 0	3.0 / 3.0	15 / 15	---	---	---	---	---
HKR-03*	10.8 / 12.5	16 / 18	20 / 20	---	---	---	---	---
HKR-05* / 05C*	17.1 / 19.8	24 / 27	40 / 40	---	---	---	---	---
HKR-06*	21.6 / 25.0	29 / 34	40 / 40	---	---	---	---	---
HKR-08* / -08C*	25.3 / 29.2	34 / 39	40 / 40	---	---	---	---	---
HKR-10* / -10C*	34.3 / 39.6	45 / 52	60 / 60	---	---	---	---	---
HKA-15C*	34.3 / 39.6	45 / 52	60 / 60	17.2 / 19.8	22 / 25	30 / 30	67/77	70 / 80
HKA-20C*	34.3 / 39.6	45 / 52	60 / 60	34.3 / 39.6	43 / 50	60 / 60	89/102	90 / 110
^HKR3-15*	0 / 0	3.0 / 3.0	15 / 15	31.2 / 36.1	39 / 45	60 / 60	---	---
^HKR3-20*	0 / 0	3.0 / 3.0	15 / 15	40.6 / 46.9	51 / 59	60 / 60	---	---
MBR1600AA-1 **	0 / 0	3.8 / 3.8	15 / 15	---	---	---	---	---
HKR-03*	10.8 / 12.5	17 / 19	20 / 20	---	---	---	---	---
HKR-05* / 05C*	17.1 / 19.8	24 / 28	40 / 40	---	---	---	---	---
HKR-06*	21.6 / 25.0	30 / 34	40 / 40	---	---	---	---	---
HKR-08* / -08C*	25.3 / 29.2	35 / 39	40 / 40	---	---	---	---	---
HKR-10* / -10C*	34.3 / 39.6	46 / 53	60 / 60	---	---	---	---	---
HKA-15C*	34.3 / 39.6	46 / 53	60 / 60	17.2 / 19.8	22 / 25	30 / 30	68/78	70 / 80
HKA-20C*	34.3 / 39.6	46 / 53	60 / 60	34.3 / 39.6	43 / 50	60 / 60	90/103	90 / 110
^HKR3-15*	0 / 0	3.8 / 3.8	15 / 15	31.26 / 36.1	39 / 45	60 / 60	---	---
^HKR3-20*	0 / 0	3.8 / 3.8	15 / 15	40.6 / 46.9	51 / 59	60 / 60	---	---
MBR2000AA-1 **	0 / 0	4.9 / 4.9	15 / 15	---	---	---	---	---
HKR-03*	10.8 / 12.5	17 / 20	20 / 20	---	---	---	---	---
HKR-05* / 05C*	17.1 / 19.8	25 / 29	40 / 40	---	---	---	---	---
HKR-06*	21.6 / 25.0	31 / 35	40 / 40	---	---	---	---	---
HKR-08* / -08C*	25.3 / 29.2	36 / 40	60 / 60	---	---	---	---	---
HKR-10* / -10C*	34.3 / 39.6	47 / 53	60 / 60	---	---	---	---	---
HKA-15C*	34.3 / 39.6	47 / 53	60 / 60	17.2 / 19.8	22 / 25	30 / 30	69/79	70 / 80
HKA-20C*	34.3 / 39.6	47 / 53	60 / 60	34.3 / 39.6	43 / 50	60 / 60	91/104	100 / 110
^HKR3-15*	0 / 0	4.9 / 4.9	15 / 15	31.2 / 36.1	39 / 45	60 / 60	---	---
^HKR3-20*	0 / 0	4.9 / 4.9	15 / 15	40.6 / 46.9	51 / 59	60 / 60	---	---

¹ Minimum Circuit Ampacity @ 208 / 240 V

² Maximum Overcurrent Protection Device @ 208 / 240 V

* Revision level that may or may not be designated

C = Circuit Breaker Option CA is for 208V and CB is for 240V

^ Heat Kit requires three-phase power supply

--- indicates Not Required

Note: All HKR ampacities noted above include air handler motor amps, excluding three-phase models.

ELECTRICAL DATA FOR GPC15M PACKAGED UNITS (BLOWER ONLY, HEAT MODE)

MODEL AND HEAT KIT USAGE	CIRCUIT #1		CIRCUIT #2		ACTUAL kW / BTU@ 240V
	MCA ¹	MOP ²	MCA ¹	MOP ²	
GPC1524M41	2.4	---	---	---	---
HKR-05*, HKR-05C*	21 / 25	25 / 25	---	---	4.75 / 16,200
HKR-08*, HKR-08C*	32 / 36	35 / 40	---	---	7.00 / 23,800
HKR-10*, HKR-10C*	43 / 49	45 / 50	---	---	9.50 / 32,400
GPC1530M41	2.4	---	---	---	---
HKR-05*, HKR-05C*	21 / 25	25 / 25	---	---	4.75 / 16,200
HKR-08*, HKR-08C*	32 / 36	35 / 40	---	---	7.0 / 23,800
HKR-10*, HKR-10C*	43 / 49	45 / 50	---	---	9.5 / 32,400
HKP-15C*	43 / 49	45 / 50	21 / 25	25 / 25	14.25 / 48,600
GPC1536M41	2.4	---	---	---	---
HKR-05*, HKR-05C*	21 / 25	25 / 25	---	---	4.75 / 16,200
HKR-08*, HKR-08C*	32 / 36	35 / 40	---	---	7.00 / 23,800
HKR-10*, HKR-10C*	43 / 49	45 / 50	---	---	9.50 / 32,400
HKP-15C*	43 / 49	45 / 50	21 / 25	25 / 25	14.25 / 48,600
GPC1542M41	3.6	---	---	---	---
HKR-05*, HKR-05C*	21 / 25	25 / 25	---	---	4.75 / 16,200
HKR-08*, HKR-08C*	32 / 36	35 / 40	---	---	7.0 / 23,800
HKR-10*, HKR-10C*	43 / 49	45 / 50	---	---	9.5 / 32,400
HKP-15C*	43 / 49	45 / 50	21 / 25	25 / 25	14.25 / 48,600
GPC1548M41	3.6	---	---	---	---
HKR-05*, HKR-05C*	21 / 25	25 / 25	---	---	4.75 / 16,200
HKR-08*, HKR-08C*	32 / 36	35 / 40	---	---	7.00 / 23,800
HKR-10*, HKR-10C*	43 / 49	45 / 50	---	---	9.50 / 32,400
HKP-15C*	43 / 49	45 / 50	21 / 25	25 / 25	14.25 / 48,600
HKP-20C*	43 / 49	45 / 50	43 / 49	45 / 50	19.0 / 64,800

¹ Minimum Circuit Ampacity @ 208 / 240 V

² Maximum Overcurrent Protection Device @ 208 / 240 V

* Revision level that may or may not be designated

C Circuit breaker option

^ Heat Kit requires three-phase power supply

NOTE: HKP-15C* and HKP-20C* replace HKR-15C and HKR-20C respectively to meet new UL1995 requirements.

ELECTRICAL DATA FOR GPC13M PACKAGED UNITS (BLOWER ONLY, HEAT MODE)

MODEL AND HEAT KIT USAGE	CIRCUIT #1		CIRCUIT #2		SINGLE-POINT KIT		ACTUAL KW / BTU@ 240V
	MCA ¹	MOP ²	MCA ¹	MOP ²	MCA ¹	MOP ²	
GPC1336M41**	1.9	---	---	---	--	--	---
HKR-05*, HKR-05C*	21 / 25	25 / 25	---	---	25	40	4.75 / 16,200
HKR-08*, HKR-08C*	32 / 36	35 / 40	---	---	34 / 39	40 / 40	7.0 / 23,800
HKR-10*, HKR-10C*	43 / 49	45 / 50	---	---	45 / 52	60 / 60	9.5 / 32,400
HKP-15C*	43 / 49	45 / 50	21 / 25	25 / 25	66 / 76	70 / 80	14.25 / 48,600
GPC1348M41**	7.3	---	---	---	--	--	---
HKR-05*, HKR-05C*	21 / 25	25 / 25	---	---	32	50	4.75 / 16,200
HKR-08*, HKR-08C*	32 / 36	35 / 40	---	---	38 / 40	50	7.0 / 23,800
HKR-10*, HKR-10C*	43 / 49	45 / 50	---	---	49 / 56	60 / 60	9.5 / 32,400
HKP-15C*	43 / 49	45 / 50	21 / 25	25 / 25	70 / 80	80 / 90	14.25 / 48,600
HKP-20C	43 / 49	45 / 50	43 / 49	45 / 50	92 / 105	100 / 110	19.0 / 64,800
GPC1360M41**	9.5	---	---	---	--	--	---
HKR-05*, HKR-05C*	21 / 25	25 / 25	---	---	42	60	4.75 / 16,200
HKR-08*, HKR-08C*	32 / 36	35 / 40	---	---	42	60	7.0 / 23,800
HKR-10*, HKR-10C*	43 / 49	45 / 50	---	---	51 / 58	60 / 60	9.5 / 32,400
HKP-15C*	43 / 49	45 / 50	21 / 25	25 / 25	72 / 82	80 / 90	14.25 / 48,600
HKP-20C	43 / 49	45 / 50	43 / 49	45 / 50	93 / 107	100 / 110	19.0 / 64,800

¹ Minimum Circuit Ampacity @ 208 / 240 V

² Maximum Overcurrent Protection Device @ 208 / 240 V

* Revision level that may or may not be designated

C Circuit breaker option

^ Heat Kit requires three-phase power supply

NOTE: HKP-15C* and HKP-20C* replace HKR-15C and HKR-20C respectively to meet new UL1995 requirements.

ELECTRICAL DATA FOR GPC14H PACKAGED UNITS (BLOWER ONLY, HEAT MODE)

MODEL AND HEAT KIT USAGE	CIRCUIT #1		CIRCUIT #2		SINGLE-POINT KIT		ACTUAL kW / BTU@ 240V
	MCA ¹	MOP ²	MCA ¹	MOP ²	MCA ¹	MOP ²	
GPC1424H41**	1.9	---	---	---	--	--	---
HKR-05*, HKR-05C*	21 / 25	25 / 25	---	---	24 / 27	30 / 30	4.75 / 16,200
HKR-08*, HKR-08C*	32 / 36	35 / 40	---	---	33 / 38	40 / 40	7 / 23,800
HKR-10*, HKR-10C*	43 / 49	45 / 50	---	---	45 / 51	60 / 60	9.5 / 32,400
GPC1430H41**	2.3	---	---	---	--	--	---
HKR-05*, HKR-05C*	21 / 25	25 / 25	---	---	24 / 27	30 / 30	4.75 / 16,200
HKR-08*, HKR-08C*	32 / 36	35 / 40	---	---	34 / 39	40 / 40	7 / 23,800
HKR-10*, HKR-10C*	43 / 49	45 / 50	---	---	45 / 52	60 / 60	9.5 / 32,400
HKP-15C*	43 / 49	45 / 50	21 / 25	25 / 25	67 / 77	70 / 80	14.25 / 48,600
GPC1436H41**	2.3	---	---	---	--	--	---
HKR-05*, HKR-05C*	21 / 25	25 / 25	---	---	24 / 27	40 / 40	4.75 / 16,200
HKR-08*, HKR-08C*	32 / 36	35 / 40	---	---	34 / 39	40 / 40	7 / 23,800
HKR-10*, HKR-10C*	43 / 49	45 / 50	---	---	45 / 52	60 / 60	9.5 / 32,400
HKP-15C*	43 / 49	45 / 50	21 / 25	25 / 25	67 / 77	70 / 80	14.25 / 48,600
GPC1442H41**	3.6	---	---	---	--	--	---
HKR-05*, HKR-05C*	21 / 25	25 / 25	---	---	27	40 / 40	4.75 / 16,200
HKR-08*, HKR-08C*	32 / 36	35 / 40	---	---	34 / 39	40 / 40	7 / 23,800
HKR-10*, HKR-10C*	43 / 49	45 / 50	---	---	46 / 52	60 / 60	9.5 / 32,400
HKP-15C*	43 / 49	45 / 50	21 / 25	25 / 25	68 / 78	70 / 80	14.25 / 48,600
HKP-20C	43 / 49	45 / 50	43 / 49	45 / 50	90 / 103	90 / 110	19.0 / 64,800
GPC1448H41**	3.6	---	---	---	--	--	---
HKR-05*, HKR-05C*	21 / 25	25 / 25	---	---	29	45	4.75 / 16,200
HKR-08*, HKR-08C*	32 / 36	35 / 40	---	---	34 / 40	45	7 / 23,800
HKR-10*, HKR-10C*	43 / 49	45 / 50	---	---	46 / 53	60 / 60	9.5 / 32,400
HKP-15C*	43 / 49	45 / 50	21 / 25	25 / 25	68 / 78	70 / 80	14.25 / 48,600
HKP-20C	43 / 49	45 / 50	43 / 49	45 / 50	90 / 103	90 / 110	19.0 / 64,800
GPC1460H41**	7.5	---	---	---	--	--	---
HKR-05*, HKR-05C*	21 / 25	25 / 25	---	---	37.3	60	4.75 / 16,200
HKR-08*, HKR-08C*	32 / 36	35 / 40	---	---	37/40	60	7 / 23,800
HKR-10*, HKR-10C*	43 / 49	45 / 50	---	---	48 / 54	60 / 60	9.5 / 32,400
HKP-15C*	43 / 49	45 / 50	21 / 25	25 / 25	70 / 80	80 / 90	14.25 / 48,600
HKP-20C	43 / 49	45 / 50	43 / 49	45 / 50	92 / 105	100 / 110	19.0 / 64,800

¹ Minimum Circuit Ampacity @ 208 / 240 V

² Maximum Overcurrent Protection Device @ 208 / 240 V

* Revision level that may or may not be designated

C Circuit breaker option

^ Heat Kit requires three-phase power supply

NOTE: HKP-15C* and HKP-20C* replace HKR-15C and HKR-20C respectively to meet new UL1995 requirements.

ELECTRICAL DATA FOR GPC13H PACKAGED UNITS (BLOWER ONLY, HEAT MODE)

MODEL AND HEAT KIT USAGE	CIRCUIT #1		CIRCUIT #2		SINGLE-POINT KIT		ACTUAL KW / BTU@ 240V
	MCA ¹	MOP ²	MCA ¹	MOP ²	MCA ¹	MOP ²	
GPC1324H41**	1.9	---	---	---	--	--	---
HKR-05*, HKR-05C*	21 / 25	25 / 25	---	---	24 / 27	25 / 30	4.75 / 16,200
HKR-08*, HKR-08C*	32 / 36	35 / 40	---	---	33 / 38	35 / 40	7 / 23,800
HKR-10*, HKR-10C*	43 / 49	45 / 50	---	---	45 / 51	50 / 60	9.5 / 32,400
GPC1330H41**	2.3	---	---	---	--	--	---
HKR-05*, HKR-05C*	21 / 25	25 / 25	---	---	24 / 27	30 / 30	4.75 / 16,200
HKR-08*, HKR-08C*	32 / 36	35 / 40	---	---	34 / 39	40 / 40	7 / 23,800
HKR-10*, HKR-10C*	43 / 49	45 / 50	---	---	45 / 52	60 / 60	9.5 / 32,400
HKP-15C*	43 / 49	45 / 50	21 / 25	25 / 25	67 / 77	70 / 80	14.25 / 48,600
GPC1336H41**	2.3	---	---	---	--	--	---
HKR-05*, HKR-05C*	21 / 25	25 / 25	---	---	24 / 27	40 / 40	4.75 / 16,200
HKR-08*, HKR-08C*	32 / 36	35 / 40	---	---	34 / 39	40 / 40	7 / 23,800
HKR-10*, HKR-10C*	43 / 49	45 / 50	---	---	45 / 52	60 / 60	9.5 / 32,400
HKP-15C*	43 / 49	45 / 50	21 / 25	25 / 25	67 / 77	70 / 80	14.25 / 48,600
GPC1342H41**	3.6	---	---	---	--	--	---
HKR-05*, HKR-05C*	21 / 25	25 / 25	---	---	27	40 / 40	4.75 / 16,200
HKR-08*, HKR-08C*	32 / 36	35 / 40	---	---	34 / 39	40 / 40	7 / 23,800
HKR-10*, HKR-10C*	43 / 49	45 / 50	---	---	46 / 52	60 / 60	9.5 / 32,400
HKP-15C*	43 / 49	45 / 50	21 / 25	25 / 25	68 / 78	70 / 80	14.25 / 48,600
HKP-20C	43 / 49	45 / 50	43 / 49	45 / 50	90 / 103	90 / 110	19.0 / 64,800
GPC1349H41**	3.6	---	---	---	--	--	---
HKR-05*, HKR-05C*	21 / 25	25 / 25	---	---	29	45	4.75 / 16,200
HKR-08*, HKR-08C*	32 / 36	35 / 40	---	---	34 / 40	45	7 / 23,800
HKR-10*, HKR-10C*	43 / 49	45 / 50	---	---	46 / 53	60 / 60	9.5 / 32,400
HKP-15C	43 / 49	45 / 50	21 / 25	25 / 25	68 / 78	70 / 80	14.25 / 48,600
HKP-20C	43 / 49	45 / 50	43 / 49	45 / 50	90 / 103	90 / 110	19.0 / 64,800
GPC1360H41**	7.5	---	---	---	--	--	---
HKR-05*, HKR-05C*	21 / 25	25 / 25	---	---	40	60	4.75 / 16,200
HKR-08*, HKR-08C*	32 / 36	35 / 40	---	---	40	60	7 / 23,800
HKR-10*, HKR-10C*	43 / 49	45 / 50	---	---	48 / 54	60 / 60	9.5 / 32,400
HKP-15C	43 / 49	45 / 50	21 / 25	25 / 25	70 / 80	80 / 90	14.25 / 48,600
HKP-20C	43 / 49	45 / 50	43 / 49	45 / 50	92 / 105	100 / 110	19.0 / 64,800

¹ Minimum Circuit Ampacity @ 208 / 240 V

² Maximum Overcurrent Protection Device @ 208 / 240 V

* Revision level that may or may not be designated

C Circuit breaker option

^ Heat Kit requires three-phase power supply

NOTE: HKP-15C* and HKP-20C* replace HKR-15C and HKR-20C respectively to meet new UL1995 requirements.

ELECTRICAL DATA FOR GPH15M PACKAGED UNITS (BLOWER ONLY, HEAT MODE)

MODEL AND HEAT KIT USAGE	CIRCUIT #1		CIRCUIT #2		SINGLE-POINT KIT		ACTUAL kW / BTU@ 240V
	MCA ¹	MOP ²	MCA ¹	MOP ²	MCA ¹	MOP ²	
APH1524M41A*	5.4	---	---	---	--	--	---
HKR-05*, HKR-05C*	21 / 25	25 / 25	---	---	46	50	4.75 / 16,200
HKR-08*, HKR-08C*	32 / 36	35 / 40	---	---	58	60	7.0 / 23,800
HKR-10*, HKR-10C*	43 / 49	45 / 50	---	---	71	80	9.5 / 32,400
APH1530M41A*	5.4	---	---	---	--	--	---
HKR-05*, HKR-05C*	21 / 25	25 / 25	---	---	48	50	4.75 / 16,200
HKR-08*, HKR-08C*	32 / 36	35 / 40	---	---	60	60	7.0 / 23,800
HKR-10*, HKR-10C*	43 / 49	45 / 50	---	---	73	80	9.5 / 32,400
HKP-15C*	43 / 49	45 / 50	21 / 25	25 / 25	97	100	14.25 / 48,600
APH1536M41A*	5.4	---	---	---	--	--	---
HKR-05*, HKR-05C*	21 / 25	25 / 25	---	---	51	60	4.75 / 16,200
HKR-08*, HKR-08C*	32 / 36	35 / 40	---	---	63	70	7.0 / 23,800
HKR-10*, HKR-10C*	43 / 49	45 / 50	---	---	76	80	9.5 / 32,400
HKP-15C*	43 / 49	45 / 50	21 / 25	25 / 25	101	110	14.25 / 48,600
APH1543M41A*	3.6	---	---	---	--	--	---
HKR-05*, HKR-05C*	21 / 25	25 / 25	---	---	51	60	4.75 / 16,200
HKR-08*, HKR-08C*	32 / 36	35 / 40	---	---	63	70	7.0 / 23,800
HKR-10*, HKR-10C*	43 / 49	45 / 50	---	---	76	80	9.5 / 32,400
HKP-15C*	43 / 49	45 / 50	21 / 25	25 / 25	101	110	14.25 / 48,600
APH1549M41A*	3.6	---	---	---	--	--	---
HKR-05*, HKR-05C*	21 / 25	25 / 25	---	---	56	70	4.75 / 16,200
HKR-08*, HKR-08C*	32 / 36	35 / 40	---	---	67	80	7.00 / 23,800
HKR-10*, HKR-10C*	43 / 49	45 / 50	---	---	80	90	9.50 / 32,400
HKP-15C*	43 / 49	45 / 50	21 / 25	25 / 25	105	110	14.25 / 48,600
HKP-20C*	43 / 49	45 / 50	43 / 49	45 / 50	132	150	19.0 / 64,800
APH1560M41A*	8.8	---	---	---	--	--	---
HKR-05*, HKR-05C*	21 / 25	25 / 25	---	---	67	80	4.75 / 16,200
HKR-08*, HKR-08C*	32 / 36	35 / 40	---	---	79	90	7.0 / 23,800
HKR-10*, HKR-10C*	43 / 49	45 / 50	---	---	92	100	9.5 / 32,400
HKP-15C*	43 / 49	45 / 50	21 / 25	25 / 25	116	125	14.25 / 48,600
HKP-20C*	43 / 49	45 / 50	43 / 49	45 / 50	144	150	19.0 / 64,800

¹ Minimum Circuit Ampacity @ 208 / 240 V

² Maximum Overcurrent Protection Device @ 208 / 240 V

* Revision level that may or may not be designated

C Circuit breaker option

^ Heat Kit requires three-phase power supply

NOTE: HKP-15C* and HKP-20C* replace HKR-15C and HKR-20C respectively to meet new UL1995 requirements.

ELECTRICAL DATA FOR GPH14H PACKAGED UNITS (BLOWER ONLY, HEAT MODE)

MODEL AND HEAT KIT USAGE	CIRCUIT #1		CIRCUIT #2		SINGLE-POINT KIT		ACTUAL kW / BTU@ 240V
	MCA ¹	MOP ²	MCA ¹	MOP ²	MCA ¹	MOP ²	
GPH1424H41A*	1.9	---	---	---	--	--	---
HKR-05*, HKR-05C*	21 / 25	25 / 25	---	---	43	50	4.75 / 16,200
HKR-08*, HKR-08C*	32 / 36	35 / 40	---	---	55	60	7 / 23,800
HKR-10*, HKR-10C*	43 / 49	45 / 50	---	---	68	70	9.5 / 32,400
GPH1430H41A*	2.3	---	---	---	--	--	---
HKR-05*, HKR-05C*	21 / 25	25 / 25	---	---	45	50	4.75 / 16,200
HKR-08*, HKR-08C*	32 / 36	35 / 40	---	---	57	60	7 / 23,800
HKR-10*, HKR-10C*	43 / 49	45 / 50	---	---	70	80	9.5 / 32,400
HKP-15C*	43 / 49	45 / 50	21 / 25	25 / 25	95	100	14.25 / 48,600
GPH1436H41A*	2.3	---	---	---	--	--	---
HKR-05*, HKR-05C*	21 / 25	25 / 25	---	---	49	60	4.75 / 16,200
HKR-08*, HKR-08C*	32 / 36	35 / 40	---	---	61	70	7 / 23,800
HKR-10*, HKR-10C*	43 / 49	45 / 50	---	---	74	80	9.5 / 32,400
HKP-15C*	43 / 49	45 / 50	21 / 25	25 / 25	98	100	14.25 / 48,600
GPH1442H41A*	3.6	---	---	---	--	--	---
HKR-05*, HKR-05C*	21 / 25	25 / 25	---	---	51	60	4.75 / 16,200
HKR-08*, HKR-08C*	32 / 36	35 / 40	---	---	63	70	7 / 23,800
HKR-10*, HKR-10C*	43 / 49	45 / 50	---	---	76	80	9.5 / 32,400
HKP-15C*	43 / 49	45 / 50	21 / 25	25 / 25	101	110	14.25 / 48,600
HKP-20C*	43 / 49	45 / 50	43 / 49	45 / 50	128	150	19.0 / 64,800
GPH1348H41A*	3.6	---	---	---	--	--	---
HKR-05*, HKR-05C*	21 / 25	25 / 25	---	---	54	60	4.75 / 16,200
HKR-08*, HKR-08C*	32 / 36	35 / 40	---	---	66	70	7 / 23,800
HKR-10*, HKR-10C*	43 / 49	45 / 50	---	---	79	80	9.5 / 32,400
HKP-15C*	43 / 49	45 / 50	21 / 25	25 / 25	103	110	14.25 / 48,600
HKP-20C*	43 / 49	45 / 50	43 / 49	45 / 50	131	150	19.0 / 64,800
GPH1460H41A*	7.5	---	---	---	--	--	---
HKR-05*, HKR-05C*	21 / 25	25 / 25	---	---	62	80	4.75 / 16,200
HKR-08*, HKR-08C*	32 / 36	35 / 40	---	---	74	90	7 / 23,800
HKR-10*, HKR-10C*	43 / 49	45 / 50	---	---	87	100	9.5 / 32,400
HKP-15C*	43 / 49	45 / 50	21 / 25	25 / 25	112	125	14.25 / 48,600
HKP-20C*	43 / 49	45 / 50	43 / 49	45 / 50	139	150	19.0 / 64,800

¹ Minimum Circuit Ampacity @ 208 / 240 V

² Maximum Overcurrent Protection Device @ 208 / 240 V

* Revision level that may or may not be designated

C Circuit breaker option

^ Heat Kit requires three-phase power supply

NOTE: HKP-15C* and HKP-20C* replace HKR-15C and HKR-20C respectively to meet new UL1995 requirements.

ELECTRICAL DATA FOR GPH13M PACKAGED UNITS (BLOWER ONLY, HEAT MODE)

MODEL AND HEAT KIT USAGE	CIRCUIT #1		CIRCUIT #2		SINGLE-POINT KIT		ACTUAL kW / BTU@ 240V
	MCA ¹	MOP ²	MCA ¹	MOP ²	MCA ¹	MOP ²	
GPH1324M41**	1.9	---	---	---	--	--	---
HKR-05*, HKR-05C*	21 / 25	25 / 25	---	---	44	50	4.75 / 16,200
HKR-08*, HKR-08C*	32 / 36	35 / 40	---	---	55	60	7.0 / 23,800
HKR-10*, HKR-10C*	43 / 49	45 / 50	---	---	68	70	9.5 / 32,400
GPH1330M41**	1.9	---	---	---	--	--	---
HKR-05*, HKR-05C*	21 / 25	25 / 25	---	---	48	50	4.75 / 16,200
HKR-08*, HKR-08C*	32 / 36	35 / 40	---	---	59	60	7.0 / 23,800
HKR-10*, HKR-10C*	43 / 49	45 / 50	---	---	72	80	9.5 / 32,400
HKP-15C*	43 / 49	45 / 50	21 / 25	25 / 25	97	100	14.25 / 48,600
GPH1336M41**	1.9	---	---	---	--	--	---
HKR-05*, HKR-05C*	21 / 25	25 / 25	---	---	50	60	4.75 / 16,200
HKR-08*, HKR-08C*	32 / 36	35 / 40	---	---	62	70	7.0 / 23,800
HKR-10*, HKR-10C*	43 / 49	45 / 50	---	---	75	80	9.5 / 32,400
HKP-15C*	43 / 49	45 / 50	21 / 25	25 / 25	100	100	14.25 / 48,600
GPH1342M41**	3.6	---	---	---	--	--	---
HKR-05*, HKR-05C*	21 / 25	25 / 25	---	---	52	60	4.75 / 16,200
HKR-08*, HKR-08C*	32 / 36	35 / 40	---	---	63	70	7.0 / 23,800
HKR-10*, HKR-10C*	43 / 49	45 / 50	---	---	76	80	9.5 / 32,400
HKP-15C*	43 / 49	45 / 50	21 / 25	25 / 25	101	110	14.25 / 48,600
GPH1348M41**	7.3	---	---	---	--	--	---
HKR-05*, HKR-05C*	21 / 25	25 / 25	---	---	59	70	4.75 / 16,200
HKR-08*, HKR-08C*	32 / 36	35 / 40	---	---	71	80	7.0 / 23,800
HKR-10*, HKR-10C*	43 / 49	45 / 50	---	---	84	90	9.5 / 32,400
HKP-15C*	43 / 49	45 / 50	21 / 25	25 / 25	109	110	14.25 / 48,600
HKP-20C*	43 / 49	45 / 50	43 / 49	45 / 50	136	150	19.0 / 64,800
GPH1360M41**	9.5	---	---	---	--	--	---
HKR-05*, HKR-05C*	21 / 25	25 / 25	---	---	67	80	4.75 / 16,200
HKR-08*, HKR-08C*	32 / 36	35 / 40	---	---	78	90	7.0 / 23,800
HKR-10*, HKR-10C*	43 / 49	45 / 50	---	---	91	100	9.5 / 32,400
HKP-15C*	43 / 49	45 / 50	21 / 25	25 / 25	116	125	14.25 / 48,600
HKP-20C*	43 / 49	45 / 50	43 / 49	45 / 50	144	150	19.0 / 64,800

¹ Minimum Circuit Ampacity @ 208 / 240 V

² Maximum Overcurrent Protection Device @ 208 / 240 V

* Revision level that may or may not be designated

C Circuit breaker option

^ Heat Kit requires three-phase power supply

NOTE: HKP-15C* and HKP-20C* replace HKR-15C and HKR-20C respectively to meet new UL1995 requirements.

ELECTRICAL DATA FOR GPH13H PACKAGED UNITS (BLOWER ONLY, HEAT MODE)

MODEL AND HEAT KIT USAGE	CIRCUIT #1		CIRCUIT #2		SINGLE-POINT KIT		ACTUAL kW / BTU@ 240V
	MCA ¹	MOP ²	MCA ¹	MOP ²	MCA ¹	MOP ²	
GPH1324H41**	1.9	---	---	---	--	--	---
HKR-05*, HKR-05C*	21 / 25	25 / 25	---	---	43	50	4.75 / 16,200
HKR-08*, HKR-08C*	32 / 36	35 / 40	---	---	55	60	7 / 23,800
HKR-10*, HKR-10C*	43 / 49	45 / 50	---	---	68	70	9.5 / 32,400
GPH1330H41**	2.3	---	---	---	--	--	---
HKR-05*, HKR-05C*	21 / 25	25 / 25	--	--	45	50	4.75 / 16,200
HKR-08*, HKR-08C*	32 / 36	35 / 40	--	--	57	60	7 / 23,800
HKR-10*, HKR-10C*	43 / 49	45 / 50	--	--	70	80	9.5 / 32,400
HKP-15C*	43 / 49	45 / 50	21 / 25	25 / 25	95	100	14.25 / 48,600
GPH1336H41**	2.3	---	---	---	--	--	---
HKR-05*, HKR-05C*	21 / 25	25 / 25	---	---	49	60	4.75 / 16,200
HKR-08*, HKR-08C*	32 / 36	35 / 40	---	---	61	70	7 / 23,800
HKR-10*, HKR-10C*	43 / 49	45 / 50	---	---	74	80	9.5 / 32,400
HKP-15C*	43 / 49	45 / 50	21 / 25	25 / 25	98	100	14.25 / 48,600
GPH1342H41**	3.6	---	---	---	--	--	---
HKR-05*, HKR-05C*	21 / 25	25 / 25	--	--	51	60	4.75 / 16,200
HKR-08*, HKR-08C*	32 / 36	35 / 40	--	--	63	70	7 / 23,800
HKR-10*, HKR-10C*	43 / 49	45 / 50	--	--	76	80	9.5 / 32,400
HKP-15C*	43 / 49	45 / 50	21 / 25	25 / 25	101	110	14.25 / 48,600
HKP-20C*	43 / 49	45 / 50	43 / 49	45 / 50	128	150	19.0 / 64,800
GPH1348H41**	3.6	---	---	---	--	--	---
HKR-05*, HKR-05C*	21 / 25	25 / 25	---	---	54	60	4.75 / 16,200
HKR-08*, HKR-08C*	32 / 36	35 / 40	---	---	66	70	7 / 23,800
HKR-10*, HKR-10C*	43 / 49	45 / 50	---	---	79	80	9.5 / 32,400
HKP-15C*	43 / 49	45 / 50	21 / 25	25 / 25	103	110	14.25 / 48,600
HKP-20C*	43 / 49	45 / 50	43 / 49	45 / 50	131	150	19.0 / 64,800
GPH1360H41**	7.5	---	---	---	--	--	---
HKR-05*, HKR-05C*	21 / 25	25 / 25	---	---	65	80	4.75 / 16,200
HKR-08*, HKR-08C*	32 / 36	35 / 40	---	---	77	90	7 / 23,800
HKR-10*, HKR-10C*	43 / 49	45 / 50	---	---	90	100	9.5 / 32,400
HKP-15C*	43 / 49	45 / 50	21 / 25	25 / 25	114	125	14.25 / 48,600
HKP-20C*	43 / 49	45 / 50	43 / 49	45 / 50	142	150	19.0 / 64,800

¹ Minimum Circuit Ampacity @ 208 / 240 V

² Maximum Overcurrent Protection Device @ 208 / 240 V

* Revision level that may or may not be designated

C Circuit breaker option

^ Heat Kit requires three-phase power supply

NOTE: HKP-15C* and HKP-20C* replace HKR-15C and HKR-20C respectively to meet new UL1995 requirements.

NOTES