

GMNT SERIES
92.6% AFUE

**4-Way, Multi-Position
Condensing Gas Furnace**



The GMNT multi-position condensing gas furnace is equipped to be installed in a utility room, attic, basement or closet.

Standard Features

- Corrosion-resistant, 29-4C secondary heat exchanger that extracts energy from the gas and converts it to usable heat
- Energy saving Hot Surface Ignition system
- Capable of multi-position installation – upflow, downflow or horizontal
- Completely assembled, factory run-tested furnace for heating or combination heating/cooling application
- Energy-saving PSC, multi-speed, direct drive blower motor
- Quiet, corrosion-resistant, plastic-induced blower motor assembly
- Vertical or horizontal venting with 2" PVC for 40k and 60k; 3" PVC for 80k, 100k and 120k
- For direct vent (2 pipe) or non-direct vent (1 pipe) installations
- All model design certified by ITS to be in compliance with ANSI Z21.47 and CAN/CGA 2.3 (Canada) safety standards
- Complies with California NOX Standards
- 40VA transformer for heating and air conditioning control service
- Tubular heat exchanger (primary)
- Aluminized-steel inshot burners
- Combination redundant gas valve and regulator
- Integrated furnace control with diagnostics
- Blower door safety switch
- Multiple-flame roll-out switches
- Outlet air limit switch
- Pressure switch for proof of combustion air
- Drain kit contains vent screens, drain trap, hoses and clamps

Cabinet Construction

- Heavy-gauge, reinforced, wrap-around insulated steel cabinet with durable baked enamel finish
- Bottom or side air inlet
- Completely insulated cabinet
- Convenient left- or right-hand connection for gas, electric service, combustion air and vent
- Removable solid bottom block-off

Optional Equipment

- L.P. Conversion Kit (LPT-01)
- Concentric Vent Kit (CVK-00)



PRODUCT SPECIFICATIONS

Performance Ratings

Model	Natural Gas Input BTUH	Natural Gas Output BTUH	Propane Gas Input BTUH	Propane Gas Output BTUH	DOE AFUE	Temperature Rise (°F)
GMNT040-3B	40,000	37,000	37,000	34,000	92.6	25 - 55
GMNT060-3B	60,000	55,000	55,000	51,000	92.6	35 - 65
GMNT080-4B	80,000	73,500	73,000	67,000	92.6	35 - 65
GMNT100-4B	100,000	92,000	92,000	85,000	92.6	40 - 70
GMNT120-5D	120,000	110,000	111,000	102,000	92.6	40 - 70

Specifications

Model	Circulator Blower			Vent Diameter ¹	Filter Size (in. ²)		Minimum Circuit Ampacity ² (amps)	Maximum Overcurrent Protection ³ (amps)	Shipping Weight (lbs.)
	Size (D x W)	HP	Speeds		Perm.	Disp.			
GMNT040-3B	10" x 6"	1/3	4	2"	290	580	8.1	15	170
GMNT060-3B	10" x 6"	1/3	4	2"	290	580	8.1	15	180
GMNT080-4B	10" x 8"	1/2	4	3"	385	770	12.5	15	205
GMNT100-4B	10" x 10"	1/2	4	3"	385	770	12.5	15	225
GMNT120-5D	10" x 10"	3/4	4	3"	480	960	14.7	15	265

1) Vent and combustion air diameters may vary depending on vent length. Refer to furnace installation instructions.

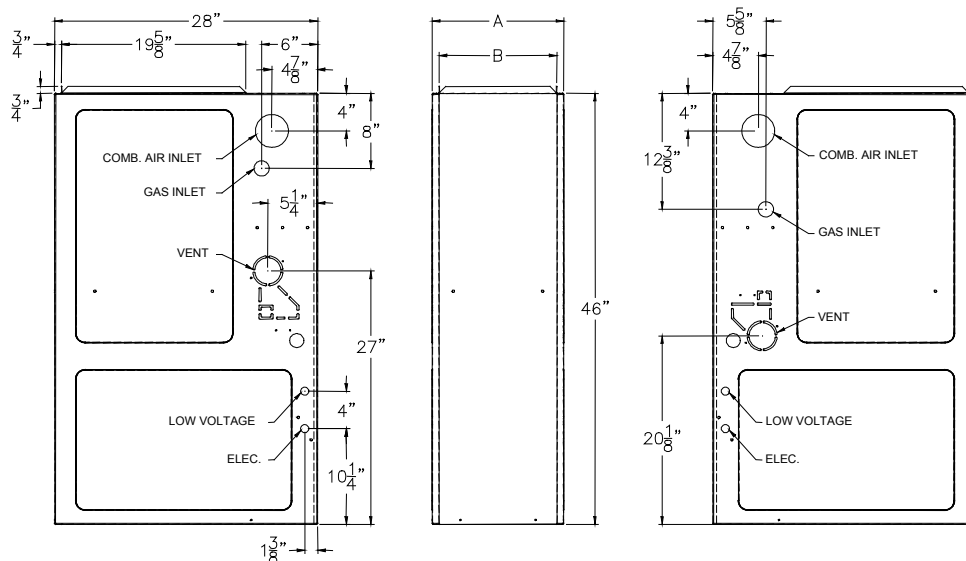
2) Minimum Circuit Ampacity = (1.25 x Circulator Blower Amps) + ID Blower amps.

3) Maximum Overcurrent Protection refers to maximum recommended fuse or circuit breaker size.

NOTES:

- All furnaces are manufactured for use on 115 VAC, 60 Hz, single-phase electrical supply.
- Gas Service Connection ½" FPT.
- IMPORTANT:** It is required to size fuses and wires properly and make electrical connections in accordance with the National Electrical Code and/or all existing local codes.

Dimensions



Model	A	B	Combustible Floor Base
GMNT040-3B	14"	12½"	SBT14
GMNT060-3B	14"	12½"	SBT14
GMNT080-4B	17½"	16"	SBT17
GMNT100-4B	21"	19½"	SBT21
GMNT120-5D	24½"	23"	SBT24

Clearances from Combustible Materials

Sides	Rear	Front*	Vent	Top
1"	0"	3"	0"	1"

Approved for line contact in the horizontal position.

*36" clearance for serviceability recommended.

Blower Performance Specifications

CFM & Temperature Rise vs. External Static Pressure															
Model (Heating Speed as Shipped)	Motor Speed	Tons AC @ 0.5" ESP	External Static Pressure, (Inches Water Column)												
			0.1		0.2		0.3		0.4		0.5		0.6	0.7	0.8
			CFM	Rise	CFM	Rise	CFM	Rise	CFM	Rise	CFM	Rise	CFM	CFM	CFM
GMNT040-3B (MED-LO)	HIGH	3.0	1,395	-----	1,340	25	1,282	27	1,227	28	1,163	29	1,096	1,015	940
	MED	2.5	1,132	30	1,103	31	1,089	31	1,048	33	1,005	34	954	897	817
	MED-LO	2.0	905	38	913	37	897	38	880	39	854	40	814	762	701
	LOW	1.5	718	47	702	49	693	49	668	51	640	53	617	576	526
GMNT060-3B (MED)	HIGH	3.0	1,352	37	1,293	39	1,239	41	1,185	43	1,126	45	1,062	980	907
	MED	2.5	1,084	47	1,081	47	1,054	48	1,016	50	971	52	921	867	796
	MED-LO	2.0	894	57	860	59	867	58	847	60	807	63	777	734	688
	LOW	1.5	680	-----	666	-----	658	-----	635	-----	607	-----	575	548	502
GMNT080-4B (MED-LO)	HIGH	4.0	1,911	35	1,823	37	1,747	39	1,638	41	1,546	44	1,464	1,355	1,264
	MED	3.5	1,686	40	1,623	42	1,531	44	1,473	46	1,412	48	1,342	1,247	1,160
	MED-LO	3.0	1,419	48	1,385	49	1,350	50	1,306	52	1,230	55	1,197	1,131	1,040
	LOW	2.5	1,153	59	1,147	59	1,126	60	1,099	62	1,069	63	1,015	957	879
GMNT100-4B (MED)	HIGH	4.0	2,222	38	2,146	40	2,035	42	1,954	43	1,810	47	1,671	1,533	1,422
	MED	3.5	1,734	49	1,717	49	1,672	51	1,618	52	1,547	55	1,463	1,354	1,257
	MED-LO	3.0	1,426	59	1,405	60	1,407	60	1,357	62	1,327	64	1,266	1,203	1,120
	LOW	2.5	1,231	69	1,186	-----	1,130	-----	1,087	-----	1,029	-----	945	870	787
GMNT120-5D (MED)	HIGH	5.0	2,407	43	2,329	44	2,214	47	2,088	49	1,994	52	1,806	1,645	1,445
	MED	4.0	1,825	57	1,764	59	1,703	61	1,646	63	1,598	65	1,486	1,336	1,058
	MED-LO	3.5	1,493	69	1,486	70	1,453	-----	1,433	-----	1,385	-----	1,034	1,023	900
	LOW	3.0	1,274	-----	1,285	-----	1,251	-----	1,224	-----	1,182	-----	1,035	916	784

1. CFM in chart is without filter(s). Filters do not ship with this furnace, but they must be provided by the installer. If the furnace requires two return filters, this chart assumes both filters are installed.
2. All furnaces ship as high-speed cooling. Installer must adjust the blower cooling speed as needed.
3. For most jobs, about 400 CFM per ton when cooling is desirable.
4. INSTALLATION IS TO BE ADJUSTED TO OBTAIN TEMPERATURE RISE WITHIN THE RANGE SPECIFIED ON THE RATING PLATE.
5. The chart is for information only. For satisfactory operation, external static pressure must not exceed value shown on the rating plate. The shaded area indicates ranges in excess of maximum static pressure allowed when heating.
6. The dashed (----) areas indicate a temperature rise not recommended for this model.
7. The above chart is for U.S. furnaces installed at 0-2000 feet. At higher altitudes, a properly de-rated unit will have approximately the same temperature rise at a particular CFM, while ESP at the CFM will be lower.

PRODUCT SPECIFICATIONS

Cased U Coil Application Options

Coil Model Number	Furnace Model Number	GMNT040-3 GMNT060-3	GMNT080-4	GMNT100-4	GMNT120-5
	Furnace Width	14"	17½"	21"	24½"
	Coil Width				
U-18	14"	X			
U-29	14"	X			
U-30	17½"	X ⁽¹⁾	X ⁽²⁾		
U-31	14"	X			
U-32	17½"	X ⁽¹⁾	X ⁽²⁾		
U-35	14"	X			
U-36	17½"	X ⁽¹⁾	X ⁽²⁾		
U-42	17½"	X ⁽¹⁾	X ⁽²⁾		
U-47	17½"		X		
U-49	21"		X ⁽¹⁾	X ⁽²⁾	
U-59	21"		X ⁽¹⁾	X ⁽²⁾	
U-60	24½"			X ⁽¹⁾	X ⁽²⁾
U-61	24½"			X ⁽¹⁾	X ⁽²⁾
U-62	21"		X ⁽¹⁾	X ⁽²⁾	

(1) Using the factory installed bottom cabinet filler plates

(2) Discard bottom cabinet filler plates

Due to the rating mix/match of various coils with outdoor units, it is important to match the furnace airflow for the total system capacity. Refer to furnace, heat pump and/or condensing unit specification sheets.

