



Air Conditioning & Heating



1 1/2 TO 5 TON

## PRODUCT SPECIFICATIONS

### CPLJ SERIES 12 SEER

SPLIT SYSTEM  
HEAT PUMP

COOLING CAPACITY:  
16,400 TO 56,000 BTU/H

HEATING CAPACITY:  
16,000 TO 56,000 BTU/H



The CPLJ features an attractive louvered metal guard that protect the coil from damage and strengthens the unit. Designed for ground-level or rooftop mount, the base pan elevates the unit above the slab for good water drainage.

#### Standard Features

- Energy-efficient compressor with internal high-pressure relief
- Quiet operating top discharge
- Totally enclosed, permanently lubricated condenser motor
- Copper tube/aluminum fin coil
- Brass liquid and suction service valves with sweat connections
- Fully charged for 15' of tubing length
- Factory-installed bi-flow liquid line filter dryer
- Discharge line muffler
- Suction line accumulator
- Check-flowrater expansion device
- Time-initiated, temperature-terminate defrost
- Low-pressure control for loss of charge protection
- Crankcase heater (where indicated)

#### Cabinet Features

- Designed for ground-level or rooftop mount
- Polyester powder-paint finish provides premium durability and improved UV protection
- Heavy-gauge, galvanized-steel cabinet
- Louvered guard protects coil from damage and adds strength to unit
- Bottom pan rails elevate unit above slab
- When properly anchored, meets 2001 Florida Building Code unit integrity requirements for hurricane-type winds

#### Air Handler and Coil Compatibilities

- ARUF, ARPF, and AEPF multi-position electric heat air handlers
- ADPF/ARPF dedicated downflow electric heat air handler
- AWUF vertical wall-mounted electric heat air handler
- ACNF ceiling-mounted electric heat air handler
- MBR/MBE modular blowers
- CA, CH and CS indoor coils



# PRODUCT SPECIFICATIONS

## SPECIFICATIONS

Model	Nominal Cooling Capacity (BTU/h)	Nominal Heating Capacity (BTU/h)	Service Valve			Compressor			Condenser Fan		dBs	Ship Weight (lbs)
			Liquid	Suction	Type	RLA	LRA	Type	HP	FLA		
CPLJ18-1B	18,000	18,000	3/8"	3/4"	Sweat	8.6	49	Reciprocating	1/6	0.9	72	127
CPLJ24-1B	23,000	23,000	3/8"	3/4"	Sweat	9.8	56	Reciprocating	1/6	0.9	73	147
CPLJ30-1B	30,000	30,000	3/8"	3/4"	Sweat	13.5	72.5	Scroll	1/6	1.1	80	142
CPLJ36-1B	35,000	35,000	3/8"	3/4"	Sweat	14.7	83	Scroll	1/6	0.9	80	152
CPLJ42-1B	41,000	40,000	3/8"	7/8"	Sweat	18.4	95	Scroll	1/4	1.8	80	162
CPLJ48-1B	46,000	46,000	3/8"	7/8"	Sweat	18.3	109	Scroll	1/4	1.8	80	178
CPLJ60-1B	56,000	56,000	3/8"	7/8"	Sweat	25	148	Scroll	1/3	2.5	80	182

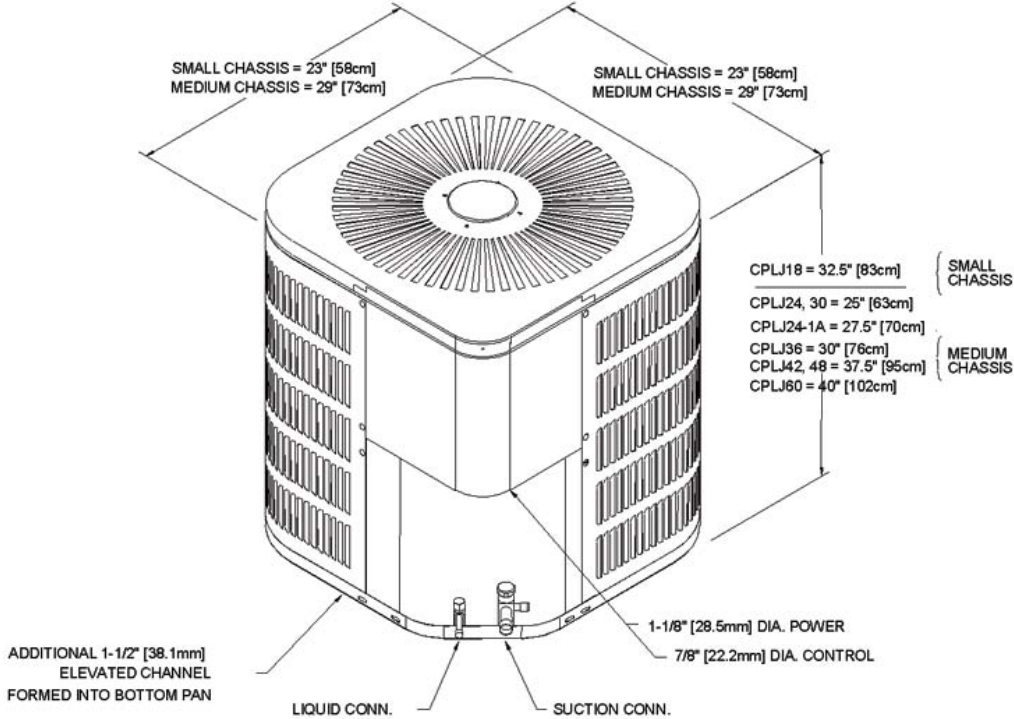
## ELECTRICAL DATA

Model	MCA <sup>1</sup>	MOD <sup>2</sup>	Voltage-Phase	Min. Volts	Max. Volts
CPLJ18-1B	11.7	20	208/230-1	197	253
CPLJ24-1B	13.2	20	208/230-1	197	253
CPLJ30-1B	18	30	208/230-1	197	253
CPLJ36-1B	19.3	30	208/230-1	197	253
CPLJ42-1B	24.8	40	208/230-1	197	253
CPLJ48-1B	24.7	40	208/230-1	197	253
CPLJ60-1B	33.8	50	208/230-1	197	253

<sup>1</sup> Minimum Circuit Ampacity: Wire size should be determined in accordance with National Electrical Codes; extensive wire runs will require larger wire sizes

<sup>2</sup> Maximum Overcurrent Protection Device: May use fuses or HACR-type circuit breakers of the same size as noted

DIMENSIONS



Model	Width	Depth	Height
CPLJ18-1B	23"	23"	34"
CPLJ24-1B	29"	29"	26.5"
CPLJ30-1B	29"	29"	26.5"
CPLJ36-1B	29"	29"	31.5"
CPLJ42-1B	29"	29"	39"
CPLJ48-1B	29"	29"	41.5"
CPLJ60-1B	29"	29"	41.5"

ACCESSORIES

Item #	Description
CHTP18-60HD	Digital Room Thermostat with 1-stage cool/2-stage heat
HPT18-60	Standard Room Thermostat with 1-stage cool/2-stage heat
OT/EHR18-60	Outdoor Lockout Thermostat/Emergency Heat Relay Kit for staging electric heat
OT18-60	Outdoor Thermostat*

\* Required for all heat pumps if outdoor ambient temperature is 0°F with 50% or higher relative humidity

# PRODUCT SPECIFICATIONS

## PERFORMANCE RATINGS

Outdoor Unit	Indoor Unit	Cooling Capacity			Heating Capacity (BTU/h)			ARI #
		BTU/h	SEER <sup>1</sup>	EER <sup>2</sup>	High	HSPF <sup>3</sup>	Low	
CPLJ18-1*	AC18-XX / ACNF18XX1A*	16,400	11.5	10.1	16,000	7	9,000	467078
	AC24-XX	16,800	12	10.5	16,400	7	9,400	467074
	ADPF18241**	18,000	12	10.5	18,000	7.5	10,000	812220
	AEPF18301**	18,000	13	11.5	18,000	7.8	10,000	812217
	AEPT030-00*-1*	18,000	13	11.5	18,000	7.8	10,000	517402
	ARPF036-00B-1* / ADPF18241**	18,000	12	10.5	18,000	7.5	10,000	517404
	ARPF18241**	18,000	12	10.5	18,000	7.5	10,000	812230
	ARPT032-00*-1*	18,000	12	10.5	18,000	7.5	10,000	517400
	ARUF018-00*-1*	17,000	11	9.7	17,000	7	9,400	517399
	ARUF032-00*-1* / ARUF18241**	18,000	12	10.5	18,000	7.5	10,000	517403
	AWB18-XX	17,000	11	9.7	17,000	7	9,400	467081
	AWB24-XX	17,400	12	10.5	17,400	7.5	9,600	467086
	AWUF18XX1A*	17,400	12	10.5	17,400	7.5	9,600	812219
	CA*F030*2* / CA*F1824*6A*+EEP	18,000	12	10.5	18,000	7.3	10,000	504243
	CHPF030A2* / CHPF1824A6A* + EEP	18,000	12	10.5	18,000	7.3	10,000	504292
	H36F / CSCF1824N6A*+ EEP	18,000	12	10.5	18,000	7.3	10,000	467239
CPLJ24-1*	AC24-XX	21,200	11.5	10.1	20,200	7	11,800	516609
	AC30-XX / ACNF24XX1A*	22,000	12	10.5	21,000	7	12,000	516603
	AEPF18301**	23,000	13	11.5	23,000	8.1	13,600	812229
	AEPT030-00*-1*	23,000	13	11.5	23,000	8.1	13,600	517401
	ARPF036-00B-1* / ADPF18241**	23,000	12	10.5	23,000	7.8	13,600	517416
	ARPF18241**	23,000	12	10.5	23,000	7.8	13,600	812225
	ARPF30301**	23,000	12	10.5	23,000	7.8	13,600	812233
	ARPT024-00*-1*	22,400	11.5	10.1	22,000	7	12,100	517412
	ARPT032-00*-1*	23,000	12	10.5	23,000	7.8	13,600	517443
	ARPT042-00*-1*	23,000	12	10.5	23,000	7.8	13,600	517419
	ARUF024-00*-1*	22,400	11.5	10	22,000	7	12,100	517420
	ARUF032-00*-1* / ARUF18241**	23,000	12	10.5	23,000	7.8	13,600	517398
	ARUF042-00*-1* / ARUF30301**	23,000	12	10.5	23,000	7.8	13,600	517424
	AWB24-XX / AWUF24XX1A*	22,400	11.5	10.1	22,000	7	12,100	516653
	AWB36-XX / AWUF36XX1A*	23,000	12	10.5	23,000	7.5	13,600	516638
	CA*F030*2* / CA*F1824*6A*+EEP	23,000	12	10.5	23,000	7.5	13,600	516734
	CA*F042*2* / CA*F3131*6A* + EEP	23,000	12	10.5	23,000	7.5	13,600	516719
	CHPF030A2* / CHPF1824A6A* + EEP	23,000	12	10.5	23,000	7.5	13,600	516730
H36F / CSCF1824N6A*+ EEP	23,000	12	10.5	23,000	7.5	13,600	516725	

<sup>1</sup> Seasonal Energy Efficiency Ratio

<sup>2</sup> Energy Efficiency Ratio @ 80 °F/67 °F/95 °F

<sup>3</sup> HSPF = Heating Seasonal Performance Factor

### Notes:

Order the EEP from the Service Department using Part No. B13707-38 or new Solid State Board B13707-35S. Part No. B13707-38 is **not interchangeable** with B13707-35S.

When mix-matching outdoor and indoor units, the indoor unit check-flowrator must match the outdoor unit size.

# PRODUCT SPECIFICATIONS

## PERFORMANCE RATINGS (CONT.)

Outdoor Unit	Indoor Unit	Cooling Capacity			Heating Capacity (BTU/h)			ARI #
		BTU/h	SEER <sup>1</sup>	EER <sup>2</sup>	High	HSPF <sup>3</sup>	Low	
CPLJ30-1*	AC18-XX	29,000	12	10.5	29,400	7.5	17,000	516721
	AC30-XX	27,000	11.5	10.1	26,000	7	14,000	516654
	AC36-XX / ACNF30XX1A*	27,400	12	10.5	26,400	7	14,600	516625
	AEPF18301**	29,000	12.5	11	29,400	7.8	17,000	812231
	AEPF30361**	30,000	13	11.5	30,000	7.8	18,000	812218
	AEPT030-00*-1*	29,000	12.5	11	29,400	7.8	17,000	517440
	AEPT036-00*-1*	30,000	13	11.5	30,000	7.8	18,000	517413
	ARPF036-00B-1* / ADPF18241**	29,000	12	10.5	29,400	7.8	17,000	517415
	ARPF30301**	29,000	12	10.5	29,400	7.8	17,000	812226
	ARPT032-00*-1*	29,000	12	10.5	29,400	7.8	17,000	517421
	ARPT042-00*-1*	29,000	12	10.5	29,400	7.8	17,000	517431
	ARUF030-00*-1*	27,200	11.3	10	27,000	7	14,600	517429
	ARUF032-00*-1* / ARUF18241**	29,000	12	10.5	29,400	7.8	17,000	517433
	ARUF042-00*-1* / ARUF30301**	29,000	12	10.5	29,400	7.8	17,000	517438
	AWB30-XX	27,200	11.3	10	27,000	7	14,800	516663
	AWB36-XX / AWUF36XX1A*	29,000	12	10.5	29,400	7.8	17,000	516643
	CA*F030*2* / CA*F1824*6A*+EEP	29,000	12	10.5	29,400	7.5	17,000	516718
	CA*F042*2* / CA*F3131*6A* + EEP	29,000	12	10.5	29,400	7.5	17,000	516716
	CHPF030A2* / CHPF1824A6A* + EEP	29,000	12	10.5	29,400	7.5	17,000	516731
	H36F / CSCF1824N6A* + EEP	29,000	12	10.5	29,400	7.5	17,000	516726
CPLJ36-1*	AC36-XX / ACNF30XX1A*	32,000	11	9.7	31,000	7	17,000	516637
	AEPF30361**	35,000	13	11.5	35,000	8	20,000	812221
	AEPT036-00*-1*	35,000	13	11.5	35,000	8	20,000	517441
	ARPF048-00B-1* / ADPF30421**	35,000	12	10.5	35,000	7.8	20,000	517423
	ARPF30301**	34,000	12	10.5	35,000	7.8	20,000	812223
	ARPT036-00*-1*	33,000	11.3	10	33,000	7.5	19,000	517409
	ARPT042-00*-1*	34,000	12	10.5	35,000	7.8	20,000	517410
	ARUF036-00*-1*	33,000	11.3	10	33,000	7.5	19,000	517428
	ARUF042-00*-1* / ARUF30301**	34,000	12	10.5	35,000	7.8	20,000	517417
	AWB36-XX / AWUF36XX1A*	33,000	11.3	10	33,000	7.5	19,000	516641
	CA*F042*2* / CA*F3131*6A* + EEP	34,000	12	10.5	35,000	7.8	20,000	516746
	CHPF042B2* / CHPF2430B6A* + EEP	34,000	12	10.5	35,000	7.8	20,000	516740
	CHPX042B2*+EEP	34,000	12	10.5	35,000	7.8	20,000	516737
H49F / CSCF3036N6A* + EEP	34,000	12	10.5	35,000	7.8	20,000	516738	

<sup>1</sup> Seasonal Energy Efficiency Ratio

<sup>2</sup> Energy Efficiency Ratio @ 80 °F/67 °F/95 °F

<sup>3</sup> HSPF = Heating Seasonal Performance Factor

**Notes:**

Order the EEP from the Service Department using Part No. B13707-38 or new Solid State Board B13707-35S. Part No. B13707-38 is **not interchangeable** with B13707-35S.

When mix-matching outdoor and indoor units, the indoor unit check-flowrator must match the outdoor unit size.

# PRODUCT SPECIFICATIONS

## PERFORMANCE RATINGS (CONT.)

Outdoor Unit	Indoor Unit	Cooling Capacity			Heating Capacity (BTU/h)			ARI #
		BTU/h	SEER <sup>1</sup>	EER <sup>2</sup>	High	HSPF <sup>3</sup>	Low	
CPLJ42-1*	AEPF42601**	41,000	13	10.79	40,000	8.3	23,000	812222
	AEPT060-00*-1*	41,000	13	10.79	40,000	8.3	23,000	517418
	ARPF048-00B-1* / ADPF30421**	40,000	12	10.5	40,000	8	22,400	517408
	ARPF36421**	40,000	12	10.5	40,000	8	22,400	812224
	ARPT042-00*-1*	38,500	11.3	10	38,500	7.5	21,000	517427
	ARPT049-00*-1*	40,000	12	10.5	40,000	8	22,400	517426
	ARUF042-00*-1*	38,500	11.3	10	38,500	7.5	21,000	517425
	ARUF049-00*-1* / ARUF36421**	40,000	12	10.5	40,000	8	22,400	517422
	CA*F060*2* / CA*F3642*6A* + EEP	40,000	12	10.5	40,000	8	22,400	541451
	CHPF060D2* / CHPF4860D6A* + EEP	40,000	12	10.5	40,000	8	22,400	516742
	H61F / CSCF4860N6A* + EEP	40,000	12	10.5	40,000	8	22,400	516743
CPLJ48-1*	AEPF42601**	46,000	12.5	11	46,000	8.5	27,000	812228
	AEPT060-00*-1*	46,000	12.5	11	46,000	8.5	27,000	517432
	ARPF060-00B-1* / ADPF48601**	46,000	12	10.5	46,000	8	27,000	517444
	ARPF36421**	44,000	12	10.5	45,000	8	25,000	812234
	ARPF48601**	46,000	12	10.5	46,000	8	27,000	812227
	ARPT049-00*-1*	44,000	12	10.5	45,000	8	25,000	517430
	ARPT061-00*-1*	46,000	12	10.5	46,000	8	27,000	517439
	ARUF048-00*-1*	44,000	11.5	10.1	44,000	7.5	24,000	517435
	ARUF049-00*-1* / ARUF36421**	44,000	12	10.5	45,000	8	25,000	517442
	ARUF061-00*-1* / ARUF48601**	46,000	12	10.5	46,000	8	27,000	517437
	CA*F060*2* / CA*F3642*6A* + EEP	44,000	12	10.5	45,000	8	25,000	516759
	CHPF060D2* / CHPF4860D6A* + EEP	44,000	12	10.5	45,000	8	25,000	516756
	H61F / CSCF4860N6A* + EEP	44,000	12	10.5	45,000	8	25,000	516762
CPLJ60-1*	AEPF42601**	56,000	12	10.5	56,000	8.5	31,000	812235
	AEPT060-00*-1*	56,000	12	10.5	56,000	8.5	31,000	517414
	ARPF060-00B-1* / ADPF48601**	56,000	12	10.5	56,000	8	31,000	517411
	ARPF48601**	56,000	12	10.5	56,000	8	31,000	812232
	ARPT061-00*-1*	56,000	12	10.5	56,000	8	31,000	517434
	ARUF060-00*-1*	55,000	11.3	10	55,000	7.5	30,000	517436
	ARUF061-00*-1* / ARUF48601**	56,000	12	10.5	56,000	8	31,000	517456
	CA*F061*2* / CA*F4860*6A* + EEP	56,000	12	10.5	56,000	8	31,000	516879
	CHPF060D2* / CHPF4860D6A* + EEP	56,000	12	10.5	56,000	8	31,000	516873
H61F / CSCF4860N6A* + EEP	56,000	12	10.5	56,000	8	31,000	516872	

<sup>1</sup> Seasonal Energy Efficiency Ratio

<sup>2</sup> Energy Efficiency Ratio @ 80 °F/67 °F/95 °F

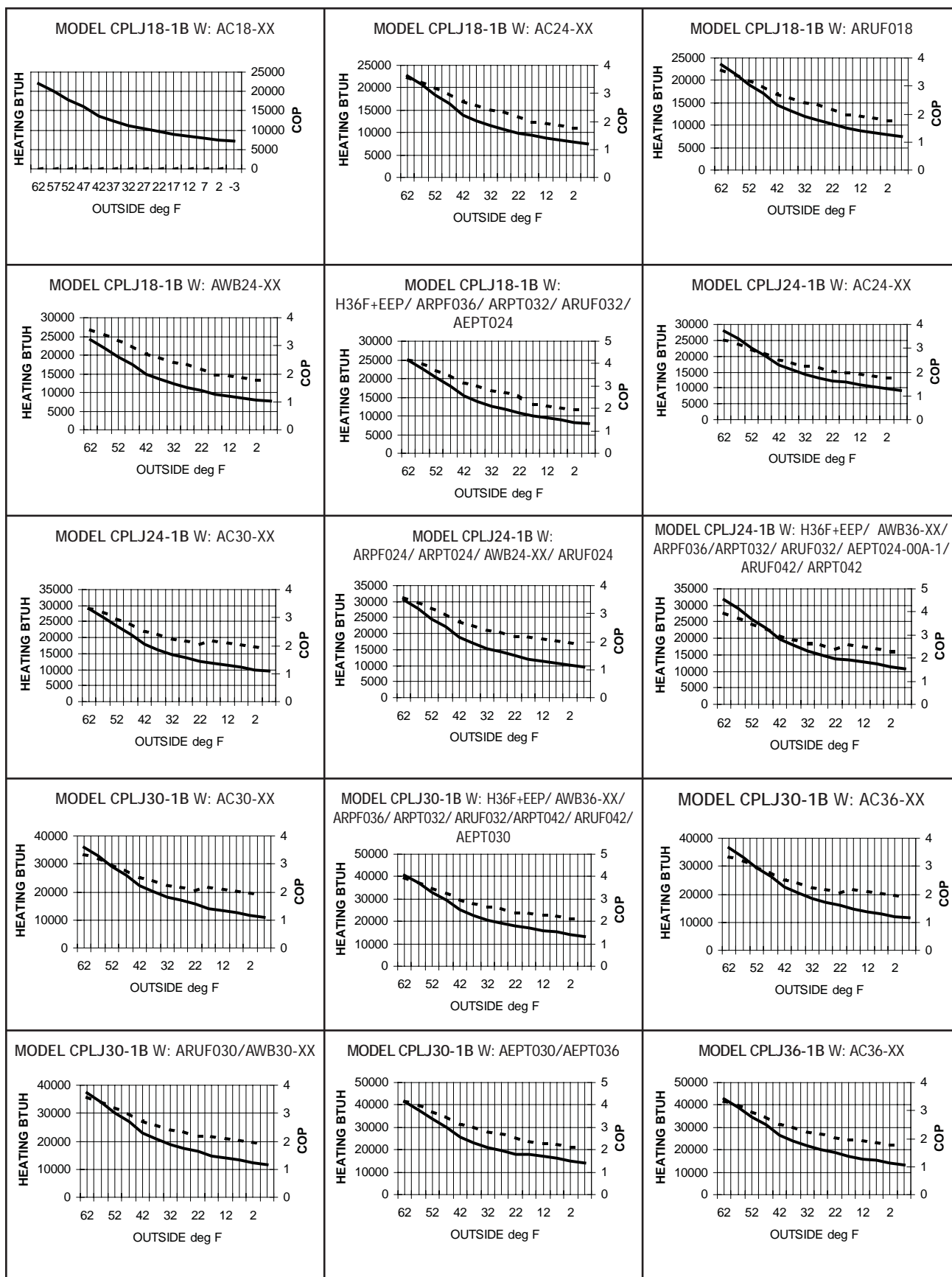
<sup>3</sup> HSPF = Heating Seasonal Performance Factor

Notes:

Order the EEP from the Service Department using Part No. B13707-38 or new Solid State Board B13707-35S. Part No. B13707-38 is **not interchangeable** with B13707-35S.

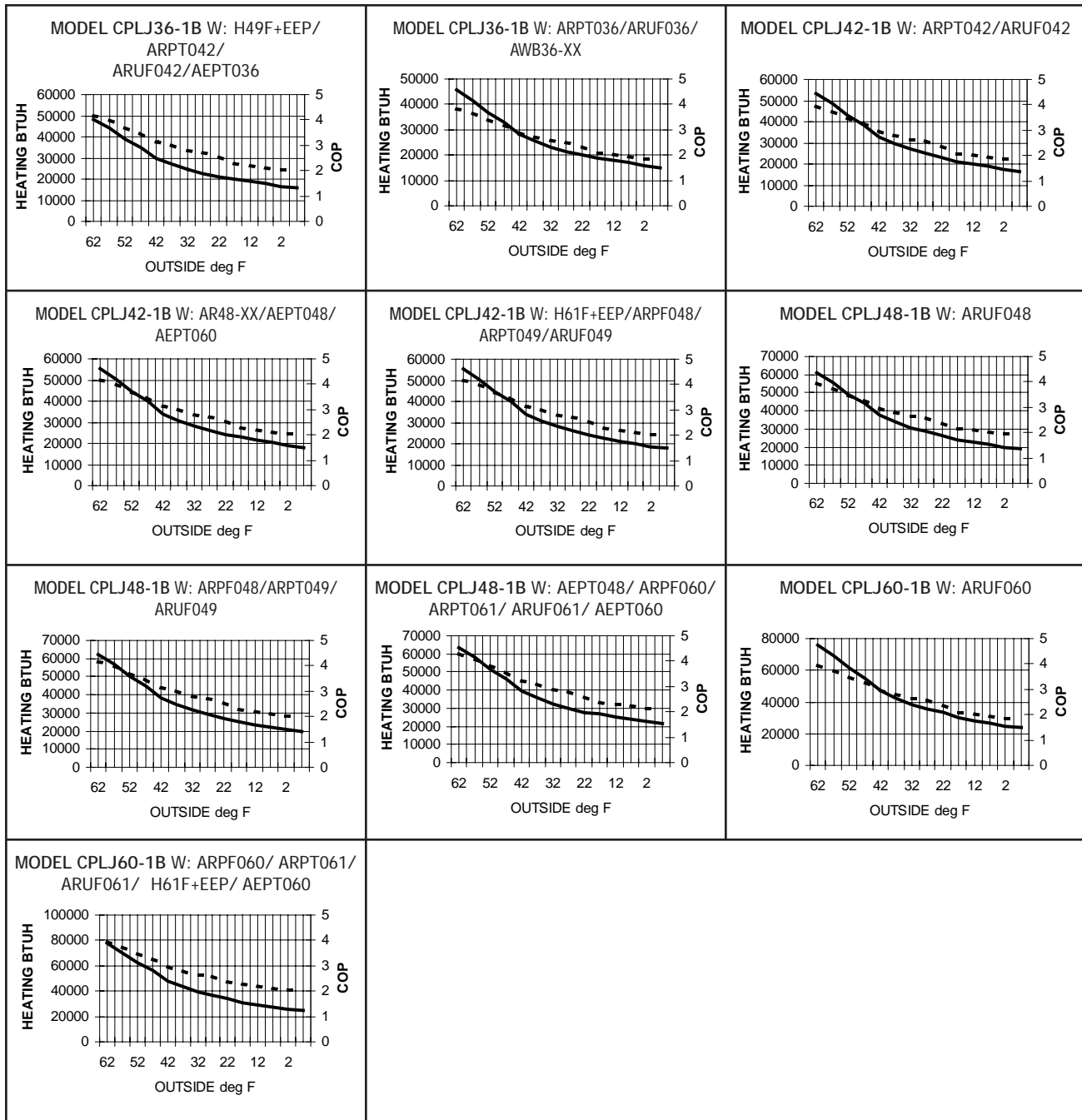
When mix-matching outdoor and indoor units, the indoor unit check-flowrator must match the outdoor unit size.

## HEATING PERFORMANCE EXPANDED RATINGS @ 70 °F INDOOR AMBIENT



# PRODUCT SPECIFICATIONS

## HEATING PERFORMANCE EXPANDED RATINGS @ 70 °F INDOOR AMBIENT (CONT.)



Goodman Manufacturing Company, L.P., reserves the right to discontinue, or change at any time, specifications or designs without notice or without incurring obligations.

Copyright © 2006 • Goodman Manufacturing Company, L.P. • Houston, Texas  
Goodman® brand products are proudly made in the USA.  
Printed in the USA.