

ELKAY[®]

SPECIFICATIONS

EZH20™ – In-Wall Recessed Bottle Filling Station

Models LZWSM8PK & LZWSMDPK
(For use with non-refrigerated SwirlFlo[®] fountains)

PRODUCT FEATURES

- Designed specifically for use with non-refrigerated SwirlFlo[®] fountains
- Space saving ADA-compliant design
- Sanitary, no-touch, sensor activation with automatic 30-second shut-off timer
- WaterSentry[®] Plus 3000 gallon filter included
- Silver ion anti-microbial protection
- Quick fill rate is 1.1 gpm for refrigerated units and 1.5 gpm for non-refrigerated units
- Visual user interface display includes:
 - Filter Monitor indicating when replacement is necessary
 - Green Ticker counts the quantity of 16 oz. bottles saved from the landfill for non-refrigerated units and 12 oz. bottles saved for refrigerated units
- Includes mounting frame for quick and simple installation
- Hinged door for easy servicing
- Constructed of durable 18 gauge stainless steel and ABS plastic

Model LZWSM8PK provides 8.0 gph of 50° F water at 90° F ambient and 80° F inlet water. Model LZWSMDPK is non-refrigerated and provides ambient water. Shall be recessed design and constructed of 18 gauge Type 300 series stainless steel and ABS plastic. Shall include electronic sensor for no-touch activation with automatic 30-second shut-off timer. Shall provide 1.1-1.5 gpm flow rate with laminar flow to minimize splashing. Shall include antimicrobial protected plastic components to prevent mold and mildew. Shall include the WaterSentry[®] Plus, certified to NSF/ANSI 42 and 53 for lead reduction, with visual monitor to indicate when replacement is necessary. Shall meet ADA guidelines for reach ranges, when properly installed. Shall be lead-free design which meets Safe Drinking Water Act and is certified to NSF/ANSI 61 and California AB1953. Unit shall be certified to UL399 and CAN/CSA 22.2 No. 120.

SUGGESTED SPECIFICATION

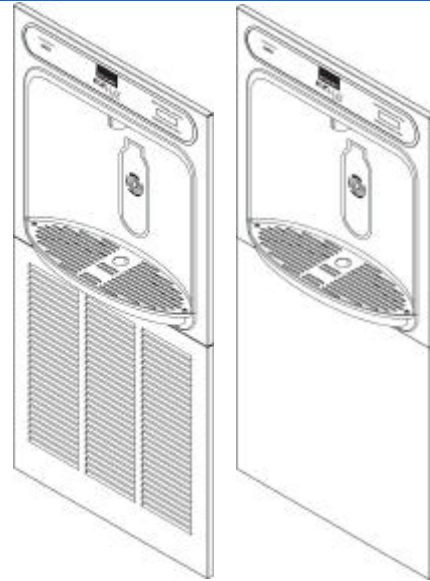
2222 Camden Court Phone: 630-572-3192
Oak Brook, IL 60523 Web: Elkayusa.com



Third Party Certified to:

- UL399 and CAN/CSA 22.2 No. 120
- Lead-free compliance including NSF/ANSI 61 and CA AB1953

IMAGES



Model LZWSM8PK
(refrigerated)

Model LZWSMDPK
(non-refrigerated)

- 51300C - Single replacement filter
- 51300C_3PK - Replacement filter 3-pack

OPTIONAL ACCESSORIES

Designed for pairing with non-refrigerated SwirlFlo[®] fountains (EDFPB models) in:

- Educational facilities
- Healthcare facilities
- Sport and fitness centers
- Airports
- Office buildings
- Other commercial buildings

APPLICATIONS

ELKAY®

Rated for Indoor Use Only

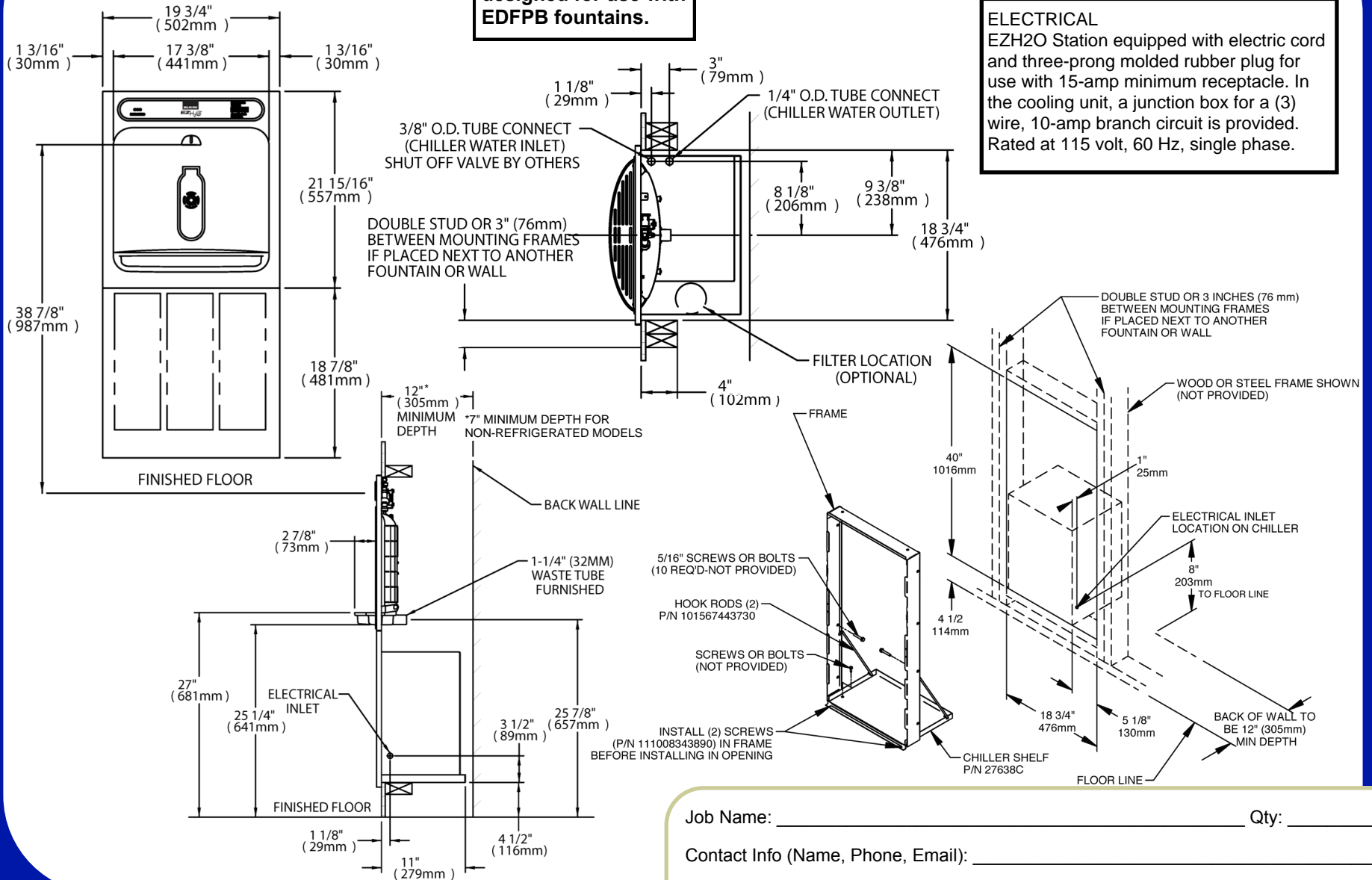
Models LZWSM8PK & LZWSMDPK

ROUGH-IN DIMENSIONS

***NOTE**
These models are designed for use with EDFPB fountains.

ELECTRICAL

EZH2O Station equipped with electric cord and three-prong molded rubber plug for use with 15-amp minimum receptacle. In the cooling unit, a junction box for a (3) wire, 10-amp branch circuit is provided. Rated at 115 volt, 60 Hz, single phase.



Specifications and measurements are subject to change without notification. Please visit elkayusa.com for most current version.

2222 Camden Court
Oak Brook, IL 60523
Phone: 630-572-3192
Web: Elkayusa.com

Job Name: _____ Qty: _____

Contact Info (Name, Phone, Email): _____

Approval for Manufacture— Signature and Date: _____

Comments: _____