

**No Lead Wall Mount Compact  
Slant Front Water Cooler  
Models HEW1, HEW3 and HEW5**



**SPECIFICATIONS**

**GENERAL**

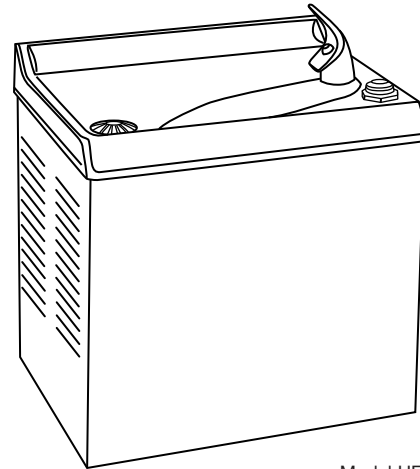
Self-contained, wall hung electric refrigerated water cooler. Capacity of 50°F drinking water, based upon 80°F inlet water and 90°F ambient.

Non-pressurized tank system is standard. Non-pressurized water tank is located after bubbler valve, so that tank is subject to line pressure only when valve button is pressed.

**NO LEAD DESIGN**

**THIS WATER COOLER COMPLIES WITH THE LEAD-FREE DEFINITION IN THE SAFE DRINKING WATER ACT OF 1986 AND LEAD CONTAMINATION CONTROL ACT OF 1988.**

Elkay Water Coolers are manufactured with a waterway system utilizing copper components and completely lead-free material. These waterways have no lead because all lead materials, such as leaded brass, have been removed. All joints are brazed using silver solder only. No lead solder is permitted. A strainer with an easily cleanable screen is provided to allow trapping and convenient removal of water born particulate of 140 microns and larger prior to their entry into the water cooler.



Model HEW1



These water coolers are classified by Underwriters Laboratories Inc. in accordance with **ANSI/NSF61, Section 9-1997b.**

**CAPACITIES CHART**

Model Number	Base Rate	*GPH of 50°F Drinking Water			Rated Watts	Full Load Amps	Glass Filler Option	Ship. Wt. Lbs.
		Room Temperature °F						
		70°F	80°F	90°F				
HEW1	1.0	1.2	1.1	1.0	180	3.0	No	40
HEW3	3.0	3.6	3.2	3.0	200	3.0	No	42
HEW5	4.6	5.5	4.8	4.6	250	3.8	No	48

\*Based on 80°F inlet water temperature. Rated watts shown are based on operational (run) time, in accordance with A.R.I. Standard 1010 conditions. Specific applications will determine the actual watts consumed per hour. Watts consumed will be based on number of people served per hour (usage), ambient temperatures, and inlet water temperature.

**COOLING SYSTEM**

**Motor Compressor:** Hermetically sealed reciprocating type, 115V, 60 Hertz single phase. Sealed-in lifetime oil supply. Equipped with electric cord and three prong molded rubber plug.

**Condenser:** Fan cooled, copper tube with aluminum fins. Fan motor is permanently lubricated.

**Cooling Unit:** Combination tube-tank type. Tube portion is continuous coil of copper tubing. Fully insulated with EPS foam which meets Underwriters Laboratories Inc. requirements for self-extinguishing material.

**Refrigerant Control:** Refrigerant HFC-134a is controlled by accurately calibrated capillary tube for positively trouble free operation.

**Temperature Control:** Enclosed adjustable thermostat is factory pre-set. Requires no adjustment other than for altitude requirements. Easily accessible.

**CONSTRUCTION**

**Cooler Top:** One piece stainless steel basin, smoothly contoured and deep, polished to a uniform Elkay bright luster finish. Snap-out strainer for ease of cleaning vertical drain, without removing cooler top.

**Cabinet:** Cabinet is one piece wrap around. Removable for access to interior through front and sides.

**Color:** Sandalwood vinyl is standard. Stainless steel available at extra cost.

**Exclusive Flexi-Guard® Safety Bubbler\*\*:** Innovative design utilizes a pliable polyester elastomer to prevent accidental mouth injuries. Flexes on impact and then returns to original position. Strong. Abrasion-resistant. Anti-sweat. Meets UL requirements, and all sanitary codes. Keyed in location to prevent rotation. Patented\*\* valve and in-line flow regulator provides constant stream from 20 to 105 psi.

**5 YEAR LIMITED WARRANTY** on the refrigeration system of the unit. Electrical components and water system are warranted for 12 months from date of installation. Sample Certificate available on request.

Elkay Electric Air Cooled Water Coolers are listed by Underwriters Laboratories Inc., approved by C.S.A., rated in accordance with A.R.I. Standard 1010 and meet all known federal and state plumbing codes.

**STANDARDS**



Elkay Electric Air Cooled Water Coolers are listed by Underwriters Laboratories Inc. and comply with both Canadian and U.S. requirements.



Rated in accordance with A.R.I. Standard 1010 and meets all known federal and state plumbing codes.

\*\*Patent #4,481,971

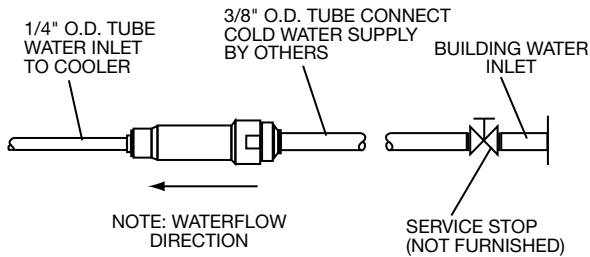
*In keeping with our policy of continuing product improvement, Elkay reserves the right to change product specifications without notice.*

*This specification describes an Elkay product with design, quality and functional benefits to the user. When making a comparison of other producers' offerings, be certain these features are not overlooked.*

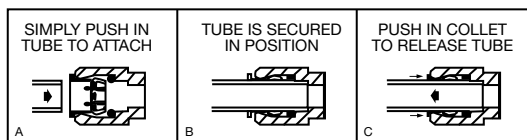
**No Lead Wall Mount Compact  
Slant Front Water Cooler  
Models HEW1, HEW3 and HEW5**



**ROUGH-IN DIMENSIONS**



**OPERATION OF QUICK CONNECT FITTINGS**



PUSHING TUBE IN BEFORE PULLING IT OUT HELPS TO RELEASE TUBE

**IMPORTANT!  
INSTALLER PLEASE NOTE:**

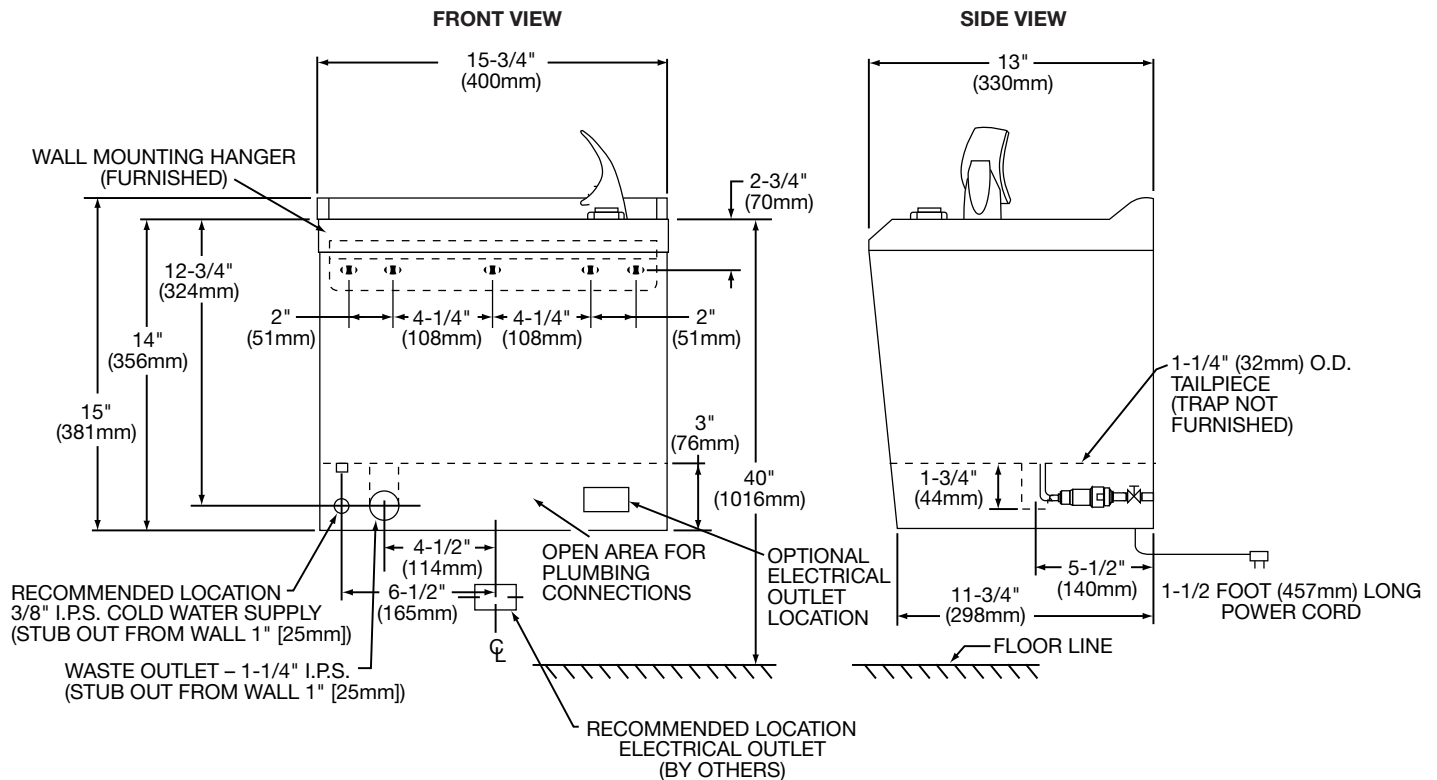
This water cooler has been designed and built to provide water to the user which has not been altered by materials in the cooler waterways.

The grounding of electrical equipment such as telephone, computers, etc., to water lines is a common procedure. This grounding may be in the building but may also occur away from the building. This grounding can cause electrical feedback into a water cooler creating an electrolysis which creates a metallic taste or causes an increase in the metal content of the water. This condition is avoidable by installing the cooler using the proper materials as shown below.

**NOTICE**

This water cooler must be connected to the water supply using a dielectric coupling. The cooler is furnished with a non-metallic strainer which meets this requirement.

The drain trap which is provided by the installer should also be plastic to completely isolate the cooler from the building plumbing system.



**Roughing-In Dimensions**

Installation – A steel mounting hanger provides rigid support of the cooler on the wall. Install at normal bubbler height of approximately 40" (1016mm), or at a lower height for children. If recessed in an alcove, allow full opening beneath cooler, and at least 4" (102mm) or more on each side for air circulation.