



Electronic Faucets

Hardwire electronic wallmount lavatory faucet for cold or pre-mixed water - 8" spout

Model No: DEMD-402

COMPLIES WITH:

- ADA compliant and meets Handicapped Accessibility Standard ASME A117.1 of less than 5 lbs. handle operating force
- IAPMO Listed
- (Contact Delta Representative for State and/or Local Approvals)



SPECIFICATION:

- Electronic wall mount lavatory faucet
- For cold or pre-mixed water - 8" spout
- Sensor detects user's hand to activate water flow
- Supplied with 24 VAC to 9 VDC Converter-requires separate order of 110/24 VAC Class II transformer
- Adjustable maximum run time
- Adjustable sensor range
- Chrome Finish

OPERATION:

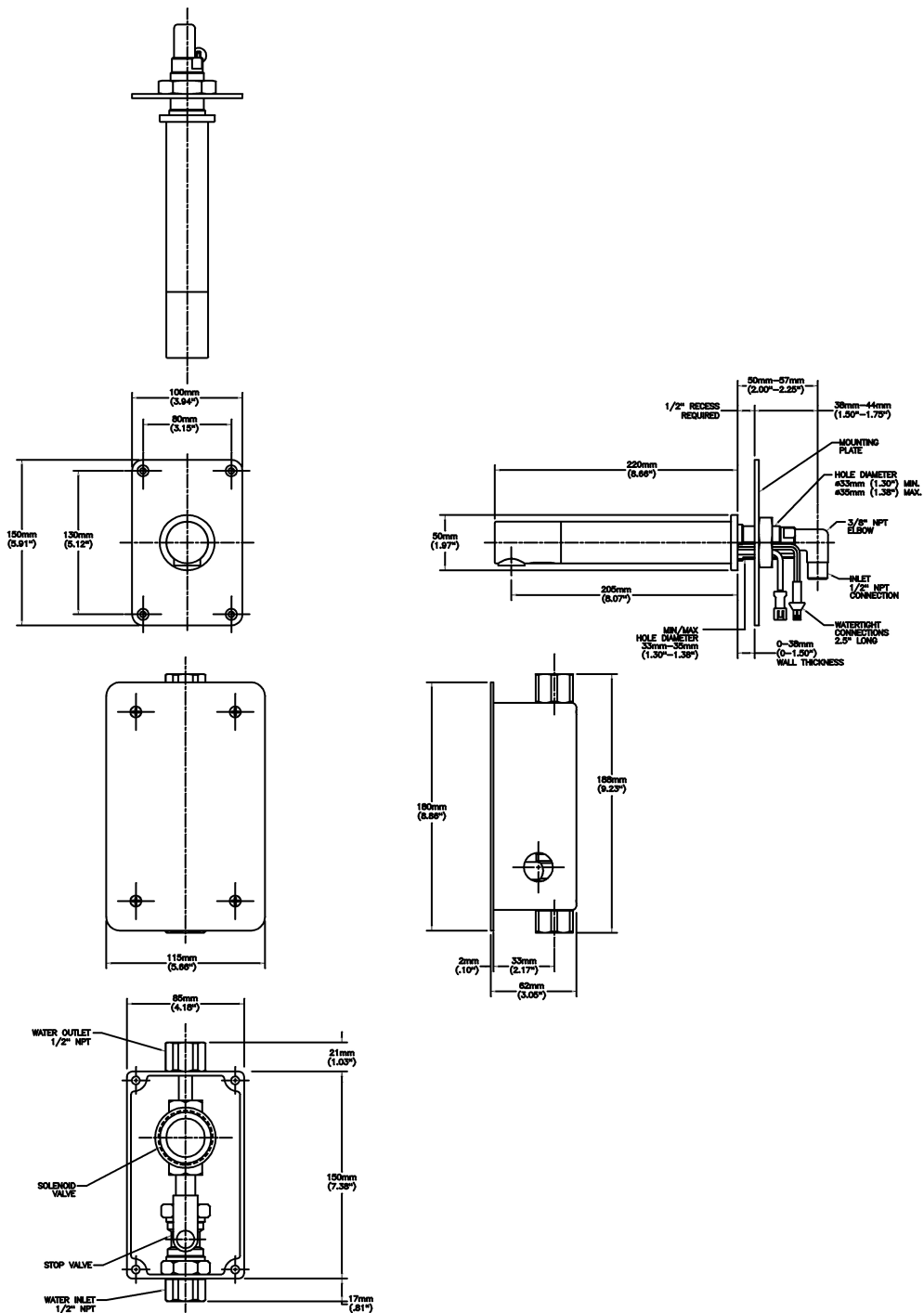
- Sensing Range: Factory set to 8.6" (220 mm), adjustable from 3.15" to 11.8" (80 mm to 300 mm)
- Maximum Run Time: 90 seconds, adjustable with remote control

(Dimensional drawing on following page)

Delta reserves the right (1) to make changes to specifications and materials, and (2) to change or discontinue models, both without notice or obligation. Dimensions are for reference. Measurement may vary plus or minus 6mm(0.25"). Mounting locations are suggested only. Check with local codes for requirements in your area. This spec was produced December 21, 2011.

Delta Faucet Company - 55 East 111th St. - Indianapolis, Indiana, USA 46280 - (317) 848-1812
Delta Faucet Canada - 395 Matheson Blvd E - Mississauga, Ontario, Canada L4Z 2H2 - (905) 712-3030

Model No: DEMD-402



Delta reserves the right (1) to make changes to specifications and materials, and (2) to change or discontinue models, both without notice or obligation. Dimensions are for reference. Measurement may vary plus or minus 6mm(0.25"). Mounting locations are suggested only. Check with local codes for requirements in your area. This spec was produced December 21, 2011.

Delta Faucet Company - 55 East 111th St. - Indianapolis, Indiana, USA 46280 - (317) 848-1812
 Delta Faucet Canada - 395 Matheson Blvd E - Mississauga, Ontario, Canada L4Z 2H2 - (905) 712-3030