



Electronic Showers

Hardwire Operated (860T1) - Push button electronic shower system

Model No: 860T157

COMPLIES WITH:

- ASME A112.18.1 / CSA B125.1
- Volume Control lever handle ADA compliant to ICC / ANSI A117.1/ADA
- *NOTE: For optimum performance of this product, we recommend a system pressure between 20 and 80 psi static. This product will operate up to a maximum of 125 psi static per ANSI and CSA requirements. However, we do not recommend pressures above 80 psi. Thermal expansion or leaking pressure reducing valves may require use of expansion tanks or relief valves to ensure your system never exceeds its maximum intended pressure setting.*
- (Contact Delta Representative for State and/or Local Approvals)
- Handshower back flow protection provided by two integral certified check valves in series, which operate independently, ASME A112.18.3 and ASME A112.18.1/CSA B125.1
- Handshower ADA compliant to ICC / ANSI A117.1/ADA
- Control / Sensor Box Option 7, Pressure Balancing Valve, meets ASSE 1016.



NOTES:

Supplied as COMPLETE PRODUCT ONLY

SPECIFICATION:

- Push button electronic shower system
- Metal cover with S/S vandal resistant mounting screws
- Metal mounting box
- Field adjustable shower time
- Slow closing solenoid valve
- Integral stop
- Hardwire - 24 VAC to 6 VDC
- Battery backup available
- #5 Shower - Handshower with Push Button Pause and standard 24" (610mm) Stainless Steel Slide Bar
- #5 Shower Flow Rate MAX: 1.5 GPM @ 80 PSI (5.7 L/min @ 552 kPa)
- #5 Shower Flow Rate MIN: 1.28 GPM @ 45 PSI (4.85 L/min @ 310 kPa)
- Tempered water supplied to solenoid valve

OPERATION:

- Shower flows when push button is activated.
- Adjustable maximum continuous run time 10 minutes.
- Factory set to 3 minutes
- PAUSE WARNING – FOR #5 Handshower and OPTIONAL #2 Handshower

Plumbing Codes require that showerheads and handshowers provide a small but continuous flow of water (trickle) when in "PAUSE" mode. Because of this continuous flow, in certain circumstances pressure variations in the water line and/or changes in the position of the shower temperature control handle while in "PAUSE" mode could result in dramatic changes to the temperature of the water when the shower head or hand shower is returned to the "ON" position.

ALWAYS point the shower head away from yourself when returning to the "ON" position and feel the water with your hand before resuming your shower to ensure the water flow is not too hot or too cold.

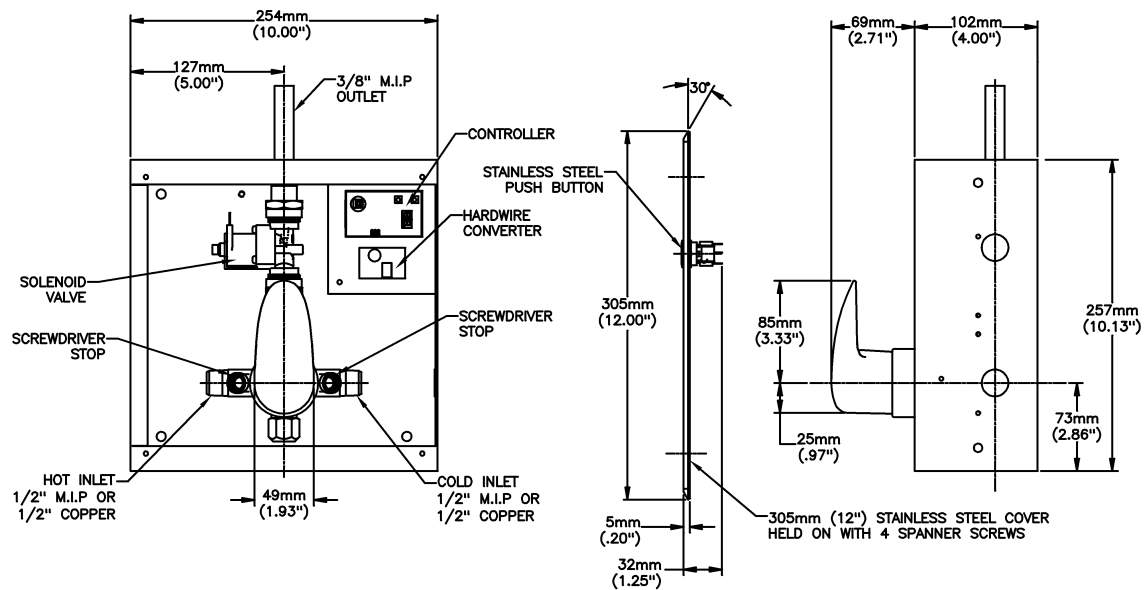
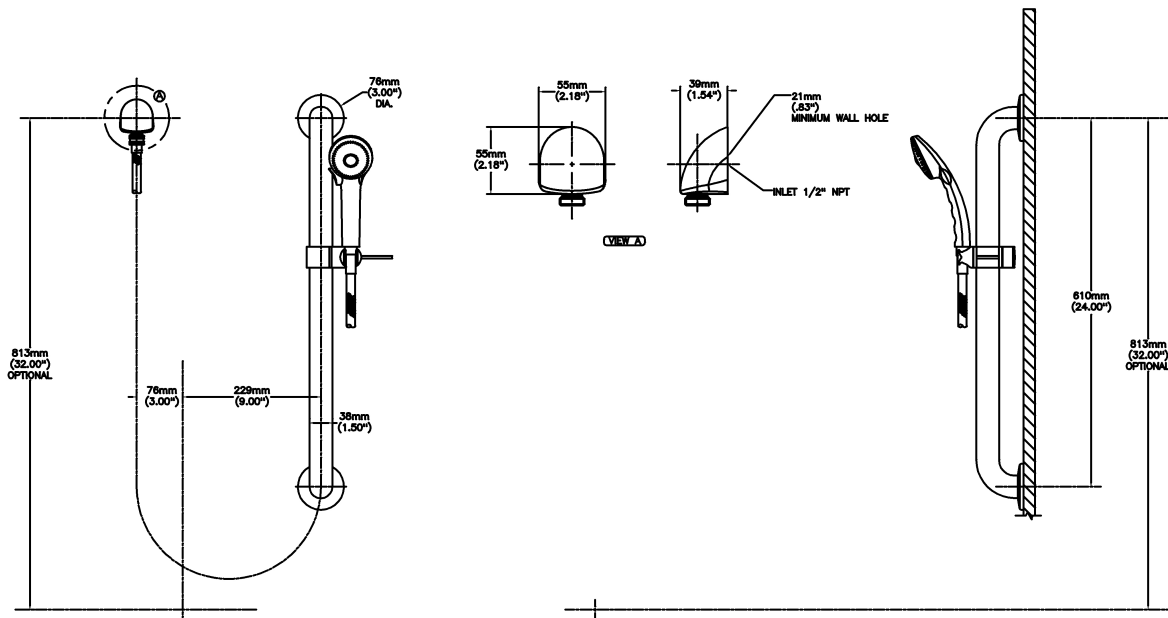
DO NOT allow children or others who might not understand this warning to use the "PAUSE" function.

(Dimensional drawing on following page)

Delta reserves the right (1) to make changes to specifications and materials, and (2) to change or discontinue models, both without notice or obligation. Dimensions are for reference. Measurement may vary plus or minus 6mm(0.25"). Mounting locations are suggested only. Check with local codes for requirements in your area. This spec was produced May 20, 2014.

Delta Faucet Company - 55 East 111th St. - Indianapolis, Indiana, USA 46280 - (317) 848-1812
Delta Faucet Canada - 395 Matheson Blvd E - Mississauga, Ontario, Canada L4Z 2H2 - (905) 712-3030

Model No: 860T157



NOTE:
PERIMETER FOAM TAPE SUPPLIED 6mm (.24") THICK.

Delta reserves the right (1) to make changes to specifications and materials, and (2) to change or discontinue models, both without notice or obligation. Dimensions are for reference. Measurement may vary plus or minus 6mm(0.25"). Mounting locations are suggested only. Check with local codes for requirements in your area. This spec was produced May 20, 2014.

Delta Faucet Company - 55 East 111th St. - Indianapolis, Indiana, USA 46280 - (317) 848-1812
Delta Faucet Canada - 395 Matheson Blvd E - Mississauga, Ontario, Canada L4Z 2H2 - (905) 712-3030

Push Button Electronic Shower 860T and 861T

**TECK®
COMMERCIAL**



Specification: (example)

- Push button electronic shower system
 - **Hardwire** - 24 VAC to 6 VDC or **Battery** - 4 AA 6 VDC
 - Stainless steel cover with S/S vandal resistant mounting screws
 - Metal mounting box
 - Field adjustable shower time
 - Slow closing solenoid valve
 - Integral stop
 - Tempered water supplied to solenoid valve (except control box options No. 3 and 6)
- and... with... (add shower required)
with... (add sensor box required)
with... (transformer – specify separately – See Back Page)

860T167



Engineer/Architect Approval

Model Specified:





Approval:




Date:

DESCRIPTION	PRODUCT NO.
Hardwire	860T1
Battery Operated	861T1
Hardwire with Battery Backup	860T1

-			
-			
-			-BB



	SHOWER	SENSOR
0 <input type="checkbox"/>	0 Specify "0" when no shower required. <input type="checkbox"/>	0 <input type="checkbox"/>
1 <input type="checkbox"/>	1 <input type="checkbox"/>	1 <input type="checkbox"/>
2 <input type="checkbox"/>	2 <input type="checkbox"/>	2 <input type="checkbox"/>
3 <input type="checkbox"/>	3 Showerhead, Arm & Set Screw Flange  <input type="checkbox"/>	3 Recessed Mount with 8" Metal Box - No Mix Valve SEE Specification Drawing #20 <input type="checkbox"/>
4 <input type="checkbox"/>	4 <input type="checkbox"/>	4 <input type="checkbox"/>
5 <input type="checkbox"/>	5 Handshower with 2 Check Valves, 610 mm (24") S/S Bar with ADA Slide  <input type="checkbox"/>	5 <input type="checkbox"/>
	6 30° Vandal Resistant, Cast Wallmount Showerhead  <input type="checkbox"/>	6 Components only UNASSEMBLED 4" Metal Box - No Mix Valve SEE Specification Drawing #21 <input type="checkbox"/>
	7 30° Vandal Resistant, Forged Brass Wallmount Showerhead  <input type="checkbox"/>	7 Recessed Mount with 10" Metal Box and User Controlled Pressure Balance Mixing Valve SEE Specification Drawing #22 <input type="checkbox"/>
	8 <input type="checkbox"/>	8 Recessed Mount with 10" Metal Box and Concealed Thermostatic Mixing Valve SEE Specification Drawing #23 <input type="checkbox"/>
	9 <input type="checkbox"/>	9 <input type="checkbox"/>

SHOWER FLOW RATES		
SHOWER #	ACTUAL @ 45 PSI (310 kPa)	MAXIMUM @ 80 PSI (552 kPa)
 3	1.36 gpm (5.15 L/min)	1.5 gpm (5.7 L/min)
 5	1.28 gpm (4.85 L/min)	1.5 gpm (5.7 L/min)
6	1.38 gpm (5.22 L/min)	1.5 gpm (5.7 L/min)
 7	1.36 gpm (5.15 L/min)	1.5 gpm (5.7 L/min)

Refer to www.specselect.com for individual models.

Note: Use this page front and back, with specification drawing page referenced above, as product submittal sheets.



TECK®
COMMERCIAL

Push Button Electronic Shower 860T and 861T

Approvals:

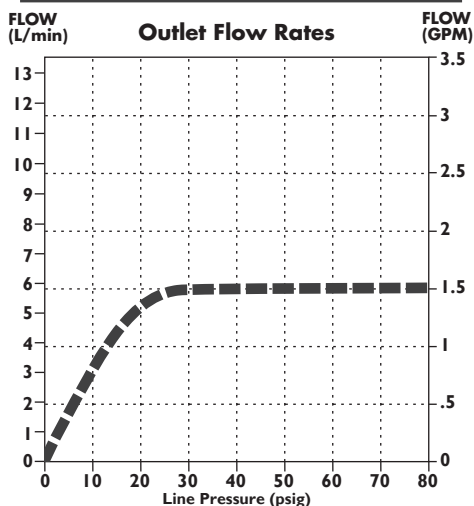
- ASME A112.18.1/CSA B125.1
- Indicates ADA compliance to ICC/ANSI A117.1/ADA
- Control/Sensor Box Option 7, Pressure Balancing Valve, complies with ASSE 1016
- Control/Sensor Box Option 8 Thermostatic Mixing Valve, CSA certified and meets ASSE 1069, 1070
- Handshower backflow protection provided by two integral certified check valves in series, which operate independently, ASME A112.18.3

(Contact Delta Representative for State and/or Local Approvals.)

Patented



FLOW RATE vs PRESSURE



Shower Outlets

■ No. 3, 5, 6 & 7
(52672-15-BG, 59462-WHB15-BG,
061011A, 063196A)

OPERATION:

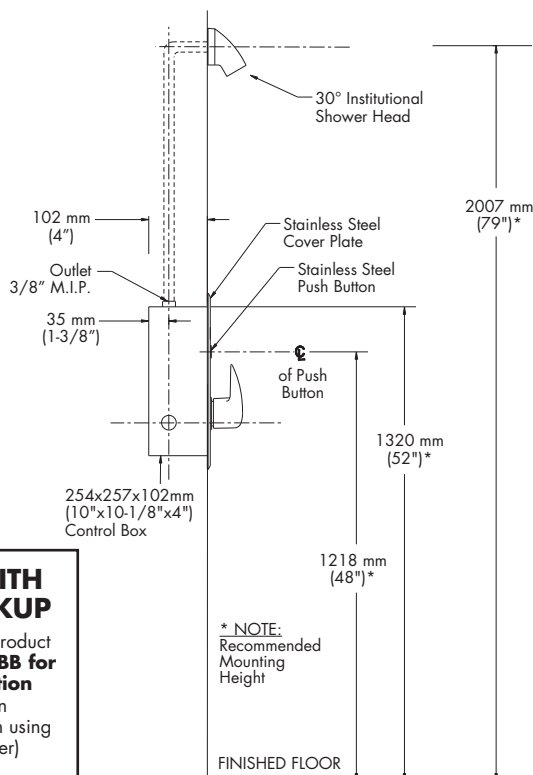
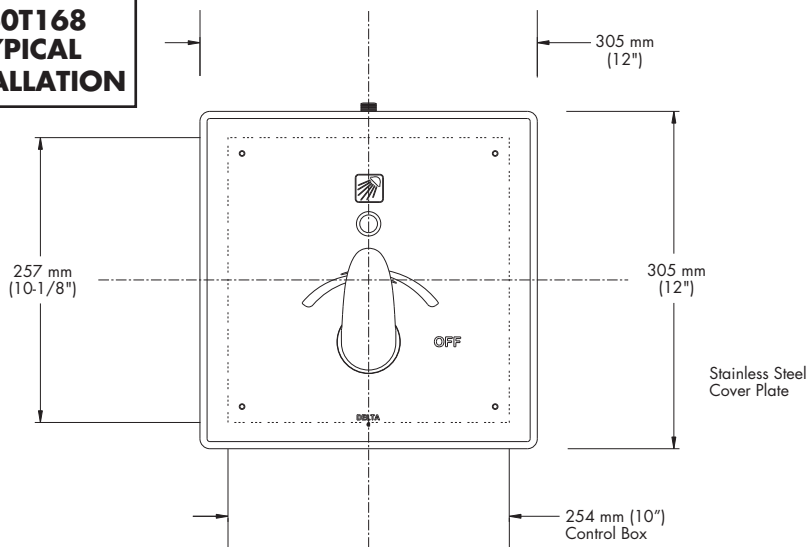
- Shower flows when push button is activated.
- Adjustable maximum continuous run time 10 minutes.
- Factory set to 3 minutes.

NOTE: For optimum performance of this product, we recommend a system pressure between 20 and 80 PSI static. This product will operate up to a maximum of 125 PSI static per ANSI and CSA requirements. However, we do not recommend pressures above 80 PSI. Thermal expansion or leaking pressure reducing valves may require use of expansion tanks or relief valves to ensure your system never exceeds its maximum intended pressure setting.

NOTE: For Showers # 6 and # 7: Not for use as an anti-ligature device.

Note: Measurements may vary ± 6 mm (0.25")

860T168 TYPICAL INSTALLATION



HARDWIRE WITH BATTERY BACKUP

- ☐ Add suffix "-BB" to Product Number. **See DSP-BB for detailed specification** (found in the "Add-On Option" section when using the printed spec binder)

* NOTE:
Recommended
Mounting
Height

PRODUCT SUPPLIED
AS SHOWN BY
SOLID LINES.
ALL ITEMS SHOWN
BY DOTTED LINES
SUPPLIED BY
OTHERS.

860T & 861T ELECTRONIC SHOWER OPTIONAL ACCESSORIES:

✓	TRANSFORMERS:
	060704A 110 to 24VAC Class II 20VA (Up to 5 Electronic Valves)
	060771A 110 to 24VAC Class II 40VA (Up to 10 Electronic Valves)
	060772A 110 to 24VAC Class II 100VA (Up to 25 Electronic Valves)
✓	CORDS:
	060901A 12" Solenoid Extension Cord
	060902A 36" Solenoid Extension Cord

Refer to www.specselect.com for individual models.

Product supplied as shown by solid lines. All items shown by dotted lines supplied by others.

DSP-860T Rev. G

Delta reserves the right (1) to make changes in specifications and materials, and (2) to change or discontinue models, both without notice or obligation. Dimensions are for reference only. See current full-line price book or www.specselect.com for finish options and product availability.

TEMPERED WATER – ASSEMBLED CONTROL BOX

860T AND 861T SERIES

✓	PRODUCT NO.			VALVE TYPE	MOUNT TYPE	COVER
	860T1		3	Push Button Shower Valve – Hardwire	Recessed Mount	254mm (10") Stainless Steel
	861T1		3	Push Button Shower Valve – Battery	Recessed Mount	254mm (10") Stainless Steel

860T AND 861T SERIES

Battery Operated – Batteries and battery pack supplied.

Hardwire Version comes complete with Watertight Connector and Hardwire Converter 24VAC to 6VDC.

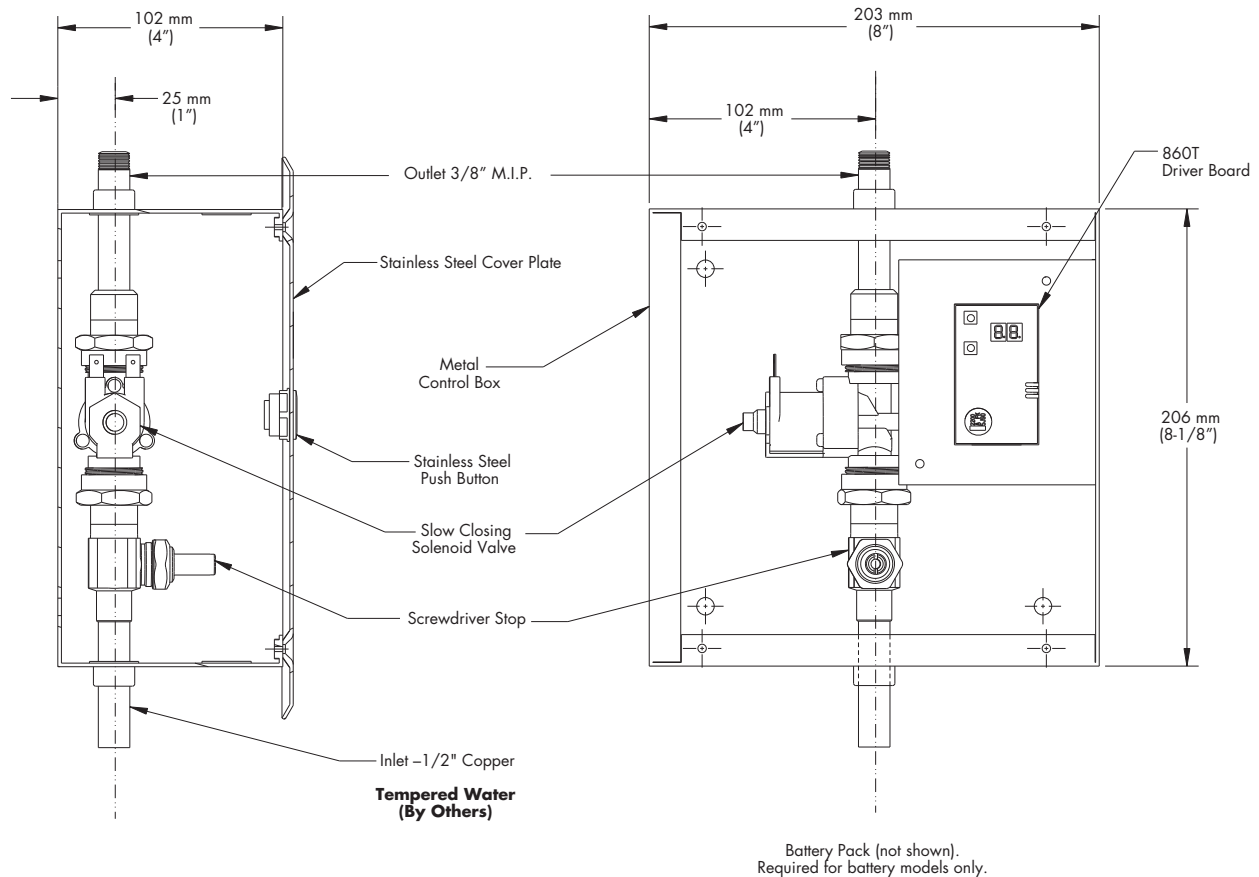
Hardwire with Battery Backup (-BB) comes complete with Watertight Connector, Hardwire Converter 24VAC to 6VDC and 9V battery. **See DSP-BB for detailed specification** (found in the "Add On Option" section when using the printed spec binder).

COMPENSATING VALVE NOTE:

Models with Control Box #3 selected must be used with automatic compensating valves rated at or less than the CV value shown for the different showerhead selection below.

MODELS WITH CONTROL BOX #3	CV VALUE @ 45 PSI (310 kPa)
Plus Shower #3	1.36 gpm (5.15 L/min)
Plus Shower #5	1.28 gpm (4.85 L/min)
Plus Shower #6	1.38 gpm (5.22 L/min)
Plus Shower #7	1.36 gpm (5.15 L/min)

861T1



Note: Measurements may vary $\pm 6\text{mm}$ (0.25")

COMPONENTS ONLY UNASSEMBLED

860T AND 861T SERIES

✓	PRODUCT NO.			VALVE TYPE	MOUNT TYPE	COVER
	860T1		6	Push Button Shower Valve – Hardwire	Recessed Mount	124 mm (4-7/8") Stainless Steel
	861T1		6	Push Button Shower Valve – Battery	Recessed Mount	124 mm (4-7/8") Stainless Steel

860T AND 861T SERIES

Battery Operated – Batteries and battery pack supplied.

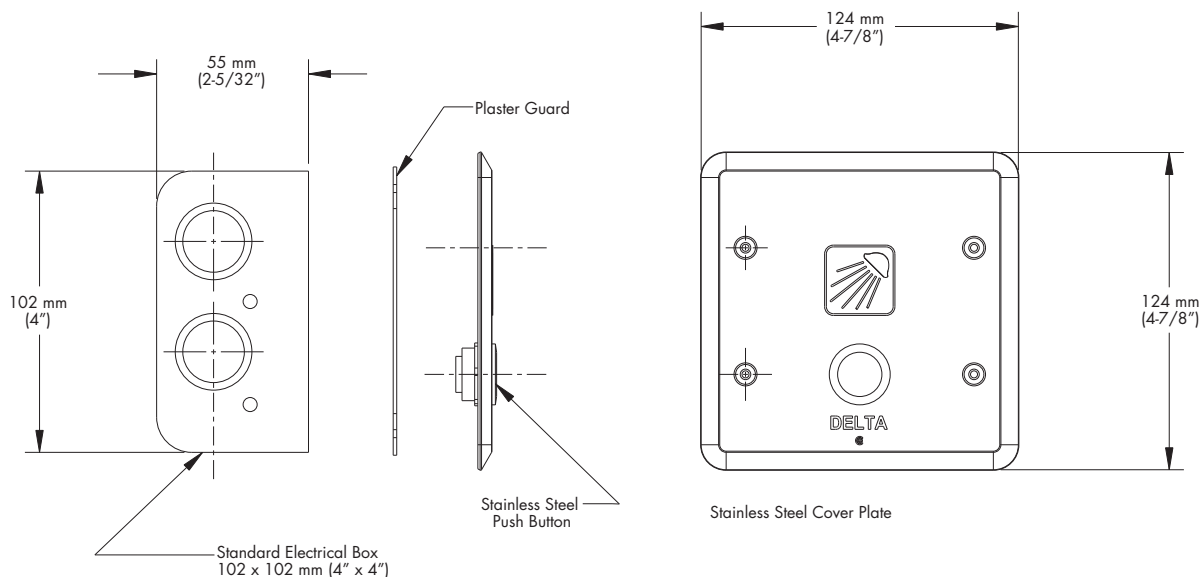
Hardwire Version comes complete with Watertight Connector and Hardwire Converter 24VAC to 6VDC.

Hardwire with Battery Backup (-BB) comes complete with Watertight Connector, Hardwire Converter 24VAC to 6VDC and 9V battery. **See DSP-BB for detailed specification** (found in the "Add-On Option" section when using the printed spec binder).

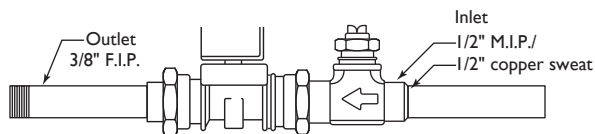
COMPENSATING VALVE NOTE:

Models with Control Box #6 selected must be used with automatic compensating valves rated at or less than the CV value shown for the different showerhead selection below.

MODELS WITH CONTROL BOX #6	CV VALUE @ 45 PSI (310 kPa)
Plus Shower #3	1.36 gpm (5.15 L/min)
Plus Shower #5	1.28 gpm (4.85 L/min)
Plus Shower #6	1.38 gpm (5.22 L/min)
Plus Shower #7	1.36 gpm (5.15 L/min)



Battery Pack (not shown).
Required for battery models only



Slow closing solenoid valve AND Screwdriver stop

**Tempered Water
(By Others)**

Note: Measurements may vary ± 6 mm (0.25")

PRESSURE BALANCING MIXING VALVE ASSEMBLED CONTROL BOX

860T AND 861T SERIES

✓	PRODUCT NO.			VALVE TYPE	MOUNT TYPE	COVER
	860T1		7	Push Button Shower Valve - Hardwire	Recessed Mount	305 mm (12") Stainless Steel
	861T1		7	Push Button Shower Valve - Battery	Recessed Mount	305 mm (12") Stainless Steel

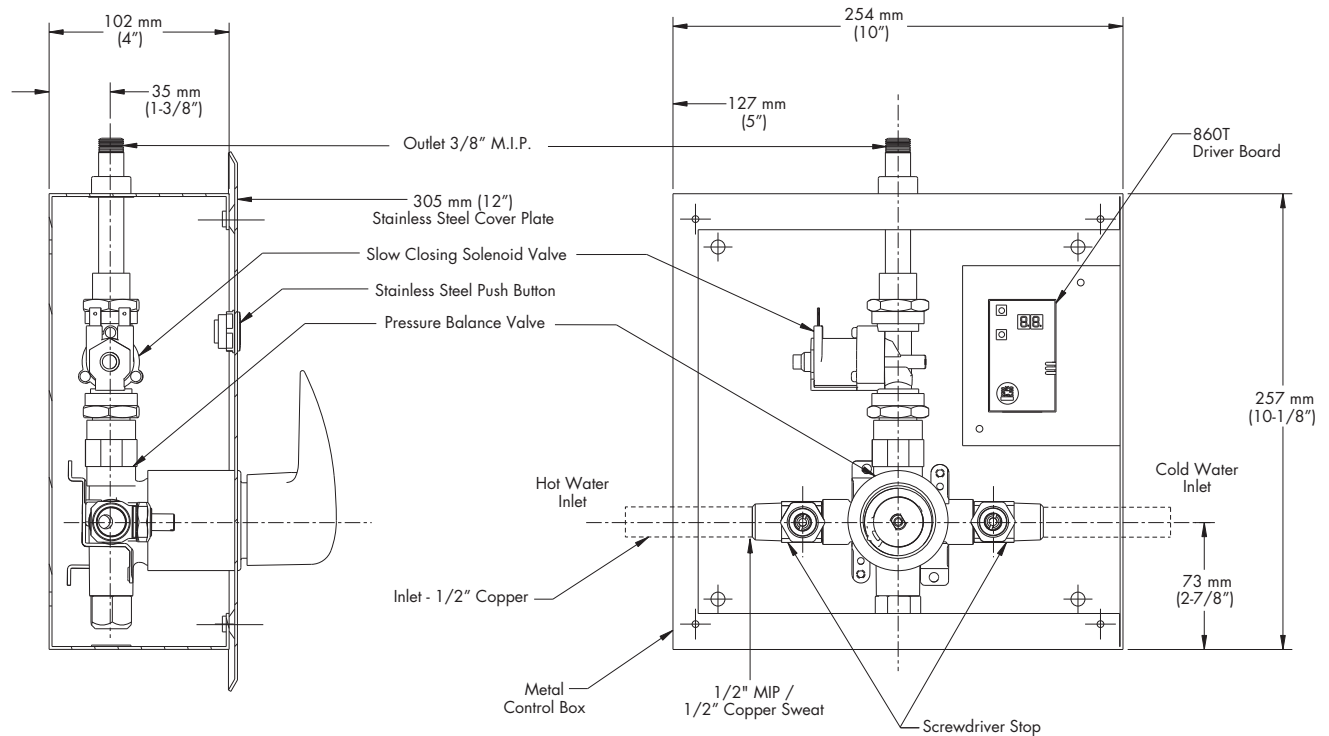
860T AND 861T SERIES

Battery Operated – Batteries and battery pack supplied.

Hardwire Version comes complete with Watertight Connector and Hardwire Converter 24VAC to 6VDC.

Hardwire with Battery Backup (-BB) comes complete with Watertight Connector, Hardwire Converter 24VAC to 6VDC and 9V battery. **See DSP-BB for detailed specification** (found in the "Add-On Option" section when using the printed spec binder).

Models supplied without a showerhead must be used with showerheads rated at 4.73 L/min (1.25 gpm) or higher.



PIPING SHOWN WITH DOTTED LINES SUPPLIED BY OTHER

Battery Pack (not shown).
Required for battery models only.

Note: Measurements may vary $\pm 6\text{ mm}$ (0.25")

THERMOSTATIC BALANCING MIXING VALVE ASSEMBLED CONTROL BOX
860T AND 861T SERIES

✓	PRODUCT NO.			VALVE TYPE	MOUNT TYPE	COVER
	860T1		8	Push Button Shower Valve - Hardwire	Recessed Mount	305 mm (12") Stainless Steel
	861T1		8	Push Button Shower Valve - Battery	Recessed Mount	305 mm (12") Stainless Steel

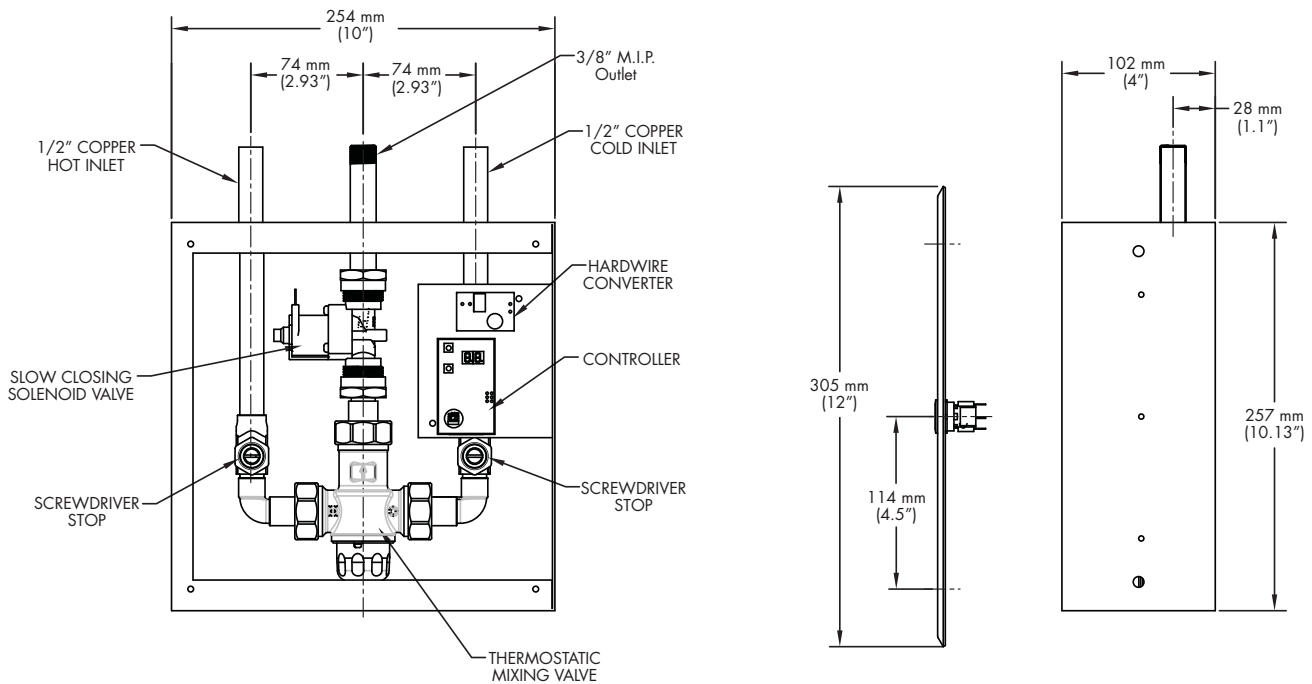
860T AND 861T SERIES

Models supplied without a showerhead must be used with showerheads rated at 1.29 L/min (0.34 gpm) or higher.

Battery Operated – Batteries and battery pack supplied.

Hardwire Version comes complete with Watertight Connector and Hardwire Converter 24VAC to 6VDC.

Hardwire with Battery Backup (-BB) comes complete with Watertight Connector, Hardwire Converter 24VAC to 6VDC and 9V battery. **See DSP-BB for detailed specification** (found in the "Add-On Option" section when using the printed spec binder).



Note: Measurements may vary ± 6 mm (0.25")

860T Series Shower Add-On Options

TECK®
COMMERCIAL



(A number from each option column must be used for a **complete Product Add-On**)



DESCRIPTION	ADD-ON NUMBER		
860T Shower Add-On Options	—		

HOSE

SLIDE BAR

0 Always use "0" if NO selection is required from this column	<input type="checkbox"/>
1	<input type="checkbox"/>
2 1753 mm (69") Long CP Stainless Steel Hose – Stretches to 92" (2337 mm) (See Note 1)	<input type="checkbox"/>
3	<input type="checkbox"/>
4	<input type="checkbox"/>

0 Always use "0" if NO selection is required from this column	<input type="checkbox"/>
1	<input type="checkbox"/>
2	<input type="checkbox"/>
3	<input type="checkbox"/>
4	<input type="checkbox"/>
5 914 mm (36") S/S Slide Bar (See Note 2)	<input type="checkbox"/>



Note:

- (1) **Base Product** for the **HOSE** must include **SHOWER** option **No. 5**
- (2) **Base Product** for S/S Slide Bar must include **SHOWER** option **No. 5**

HOW TO SELECT AND SPECIFY ADD-ON OPTIONS:

Example No. 1: Base Product selected is 860T153.
36" S/S Slide Bar Add-On Suffix Number is -05
Product Number to Specify: 860T153-05