



Electronic Faucets

Battery operated deck mount electronic lavatory faucet with Proximity® Sensing Technology. Vandal Resistant 1.5 gpm (5.7 L/min) flow rate. Laminar Outlet.

Model No: 601T040-SS

COMPLIES WITH:

- CSA certified
- Complies to ASME A112.18.1/CSA B125.1
- 1.5 GPM (5.7 L/min) outlet option is EPA WaterSense listed
- Verified compliant with 0.25% weighted average Pb content regulations
- Patented
- ♿ Indicates compliance to ICC/ANSI A117.1
- (Contact Delta Representative for State and/or Local Approvals)



NOTES:

Supplied as COMPLETE PRODUCT ONLY (no separate rough-in required)
Verified compliant with 0.25% weighted average Pb content regulations

COMPLETE SERIES is available as Compliant product as of August 14 2013 .

The Product Numbers have NOT changed.

SPECIFICATION:

- Deck mount electronic lavatory faucet
- Cast chrome plated brass spout
- Proximity® Sensing Technology
- Battery units supplied with 4 'AA' cell batteries
- Surface mount control box
- Mixing valve required (Order separately)
- 1.5 GPM (5.7 L/min) Laminar Outlet
- Brilliance® Stainless Steel(SS)

OPERATION:

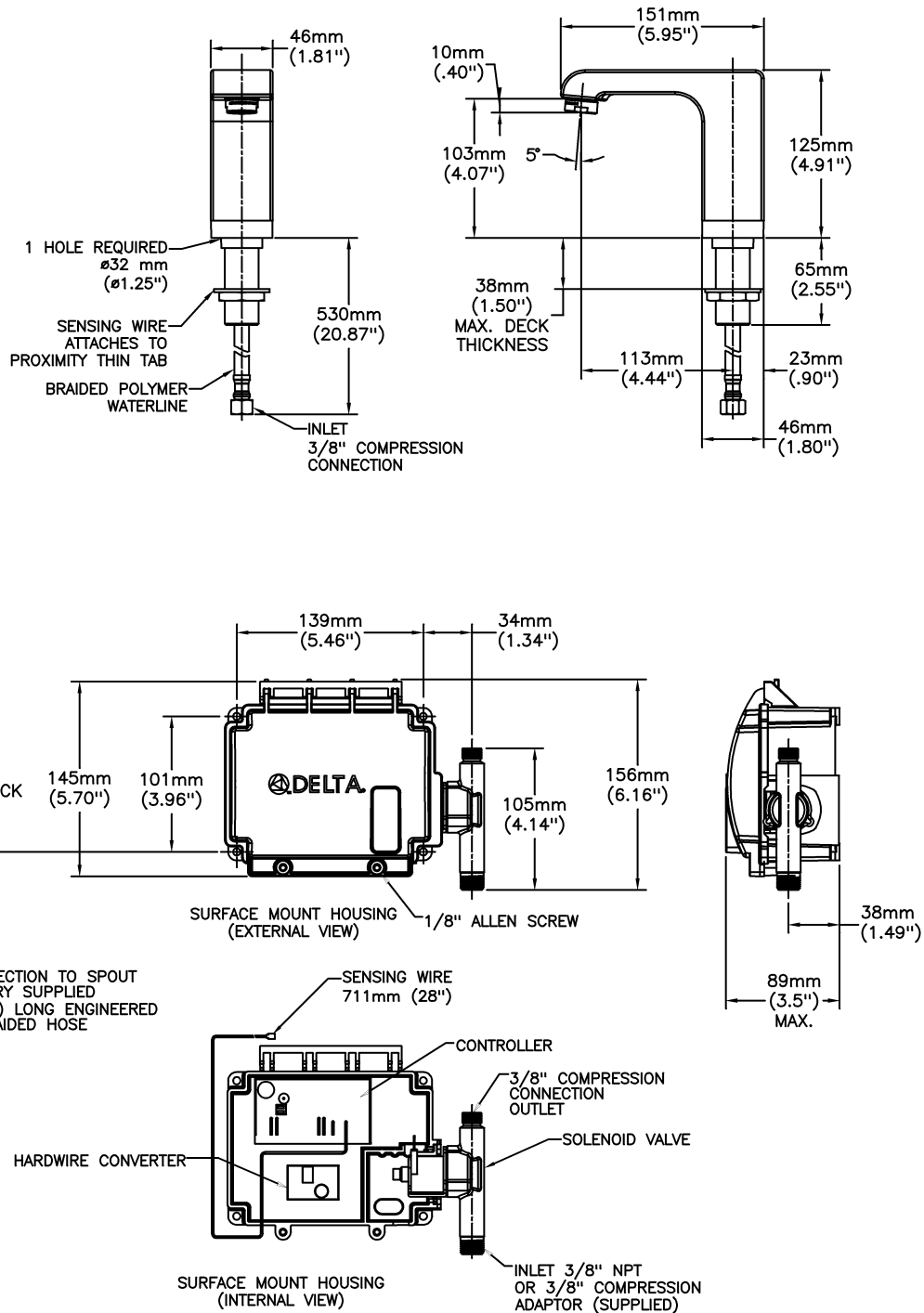
- Hands free (touchless) operation.
- No visible sensor, the spout is the sensor.
- Water flows when sensing is activated.
- Water flow stops upon de-activation of sensing.
- Adjustable sensing distance factory set to 76 mm (3").
- Low battery audible beep (for battery models only) will activate after faucet shuts off when approximately 1500 cycles remain.
- Adjustable auto shut off feature. Factory set to 45 seconds.
- Metering mode with selectable flow times of 7 seconds to 4 minutes, factory set off.
- Periodic Rinse feature, time adjustable in 6 hour increments up to 2 days. Selectable rinsing lengths from 10 to 180 seconds. Factory set off.
- NOTE: For optimum performance of this product, we recommend a system pressure between 20 and 80 PSI static. This product will operate up to a maximum of 125 PSI static per ANSI and CSA requirements. However, we do not recommend pressures above 80 PSI. Thermal expansion or leaking pressure reducing valves may require use of expansion tanks or relief valves to ensure your system never exceeds its maximum intended pressure setting.

(Dimensional drawing on following page)

Delta reserves the right (1) to make changes to specifications and materials, and (2) to change or discontinue models, both without notice or obligation. Dimensions are for reference. Measurement may vary plus or minus 6mm(0.25"). Mounting locations are suggested only. Check with local codes for requirements in your area. This spec was produced October 03, 2014.

Delta Faucet Company - 55 East 111th St. - Indianapolis, Indiana, USA 46280 - (317) 848-1812
Delta Faucet Canada - 395 Matheson Blvd E - Mississauga, Ontario, Canada L4Z 2H2 - (905) 712-3030

Model No: 601T040-SS



Delta reserves the right (1) to make changes to specifications and materials, and (2) to change or discontinue models, both without notice or obligation. Dimensions are for reference. Measurement may vary plus or minus 6mm(0.25"). Mounting locations are suggested only. Check with local codes for requirements in your area. This spec was produced October 03, 2014.

Delta Faucet Company - 55 East 111th St. - Indianapolis, Indiana, USA 46280 - (317) 848-1812
 Delta Faucet Canada - 395 Matheson Blvd E - Mississauga, Ontario, Canada L4Z 2H2 - (905) 712-3030