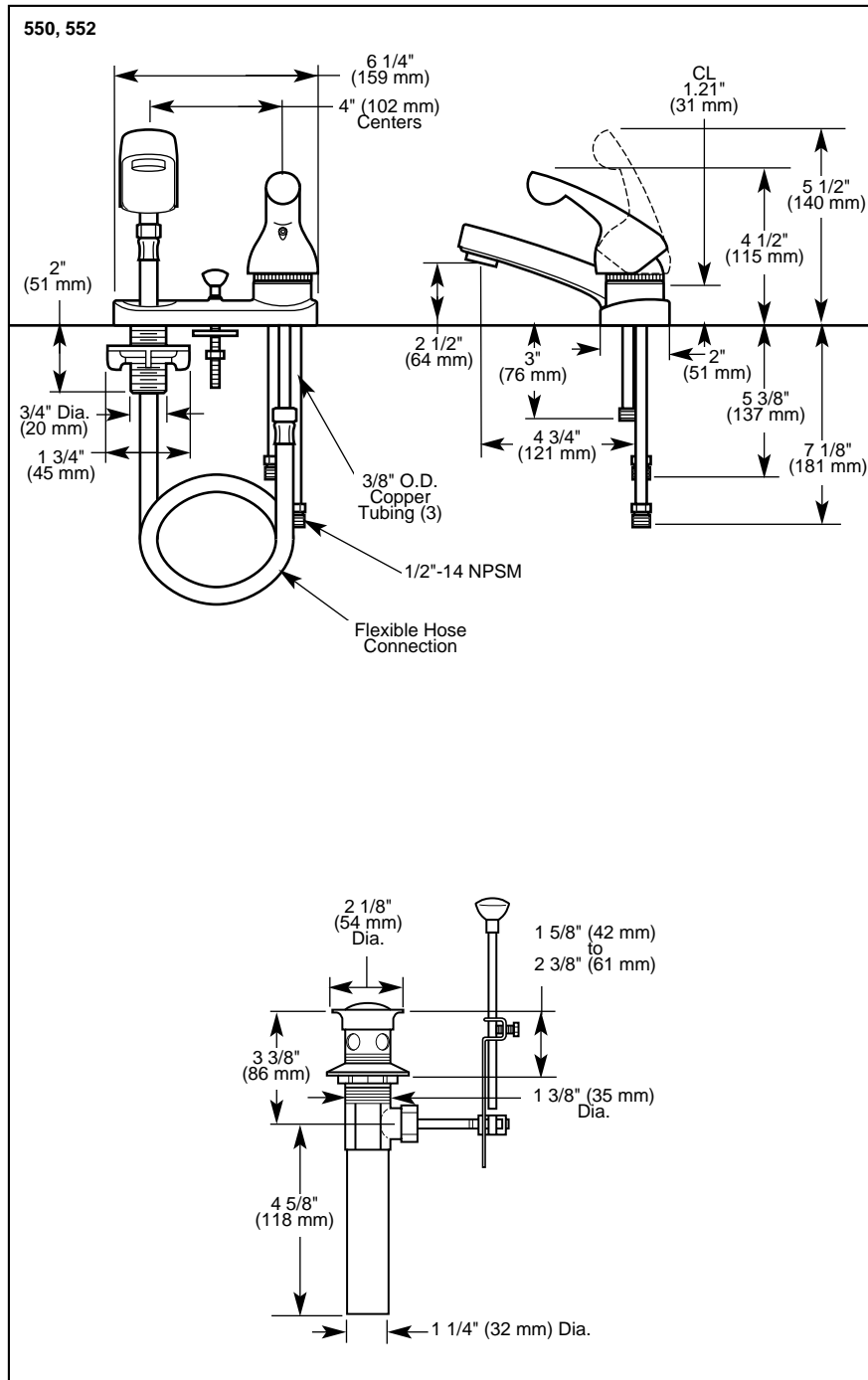




550

Submitted Model No.: _____

Specific Features: _____



Delta reserves the right (1) to make changes in specifications and materials, and (2) to change or discontinue models, both without notice or obligation. Dimensions are for reference only. See current full-line price book for finish options and product availability.

DSP-L-550 Rev. B



LAVATORY FAUCETS

- Handi-Lav® Pull-Out Spout Series
- Single Handle Deck Mount
- 3 Hole Sink Applications
- 4" Centerset

STANDARD SPECIFICATIONS:

- Solid brass fabricated body.
- 4" (102 mm) centerset.
- 4 3/4" (121 mm) long pull-out spout.
- Lever handle.
- Lever control handle shall return to neutral position when valve is turned off.
- Control mechanism is the rotating stainless steel ball type with replaceable non-metallic seats operating in stainless steel lined sockets.
- Pull-out spout operates in aerate mode.
- Spout is connected to valve body with a 42" (1067 mm) hose that extends to 33" (838 mm) usable length.
- Each supply line has a back siphonage check valve. Spout contains a backflow check valve. Valve has an anti-siphon atmospheric vent in the stainless steel ball with integral vacuum breaker.
- 3/8" O.D. straight, staggered copper supply tubes with 1/2"-14 NPSM adapters.
- Model has metal drain with pop-up type fitting with plated flange and stopper.

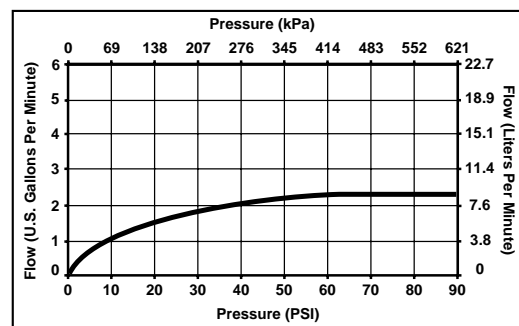
WARRANTY

- Lifetime Faucet and Finish Limited Warranty to the original consumer purchaser to be free from defects in material and workmanship.
- 5 Year Limited Warranty for usage in all industrial, commercial and business applications.



COMPLIES WITH:

- ASME A112.18.1 / CSA B125.1
- ASME A112.18.2 / CSA B125.2
- Indicates ADA compliance to ICC/ANSI A117.1
- IAPMO Listed
- CSA Certified



Indianapolis, Indiana 46280
A Division of Masco Corporation of Indiana
© 2006 Masco Corporation of Indiana