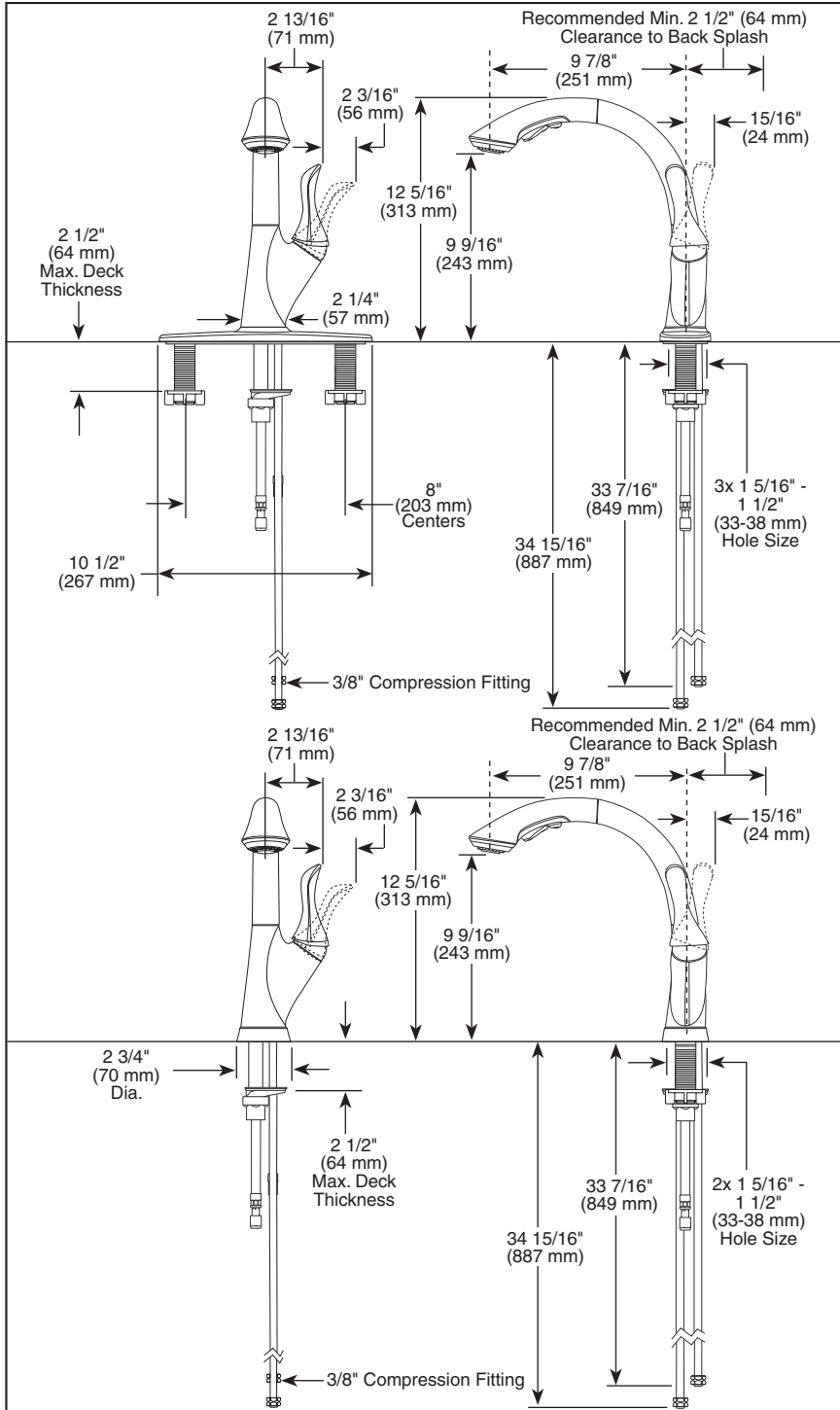


4153-DST▲

Submitted Model No.: \_\_\_\_\_

Specific Features: \_\_\_\_\_



▲ Designate Proper Finish Suffix

Delta reserves the right (1) to make changes in specifications and materials, and (2) to change or discontinue models, both without notice or obligation. Dimensions are for reference only. See current full-line price book or [www.specselect.com](http://www.specselect.com) for finish options and product availability.

DSP-K-4153-DST Rev. A

# DELTA

## KITCHEN FAUCETS

- Linden™ Series
- Single Handle Deck Mount
- 1 or 3 Hole Sink Applications
- DIAMOND® Seal Technology
- Integrated Supply Tubes
- 2-Function Pull-Out W/ Multi-Flow™

### STANDARD SPECIFICATIONS:

- Single handle kitchen faucets for exposed mounting on 1 or 3 hole sinks.
- Centermount or 8" (203 mm) centers with optional 10 1/2" (267 mm) long escutcheon included.
- 12 5/16" (313 mm) high, 9 7/8" (251 mm) long spout nestled in metal hub assembly, swings 360°.
- Spout is connected to valve body with a 53" (1346 mm) long hose.
- Pull-out spout operates in an aerated or spray mode via an easy push button.
- Sprayhead includes Multi-Flow™ feature which allows for a temporary flow rate increase to 2.0 gpm.
- Lever handle returns to neutral position when valve is turned off.
- Control mechanism is the diamond coated ceramic cartridge.
- Red/blue graphics on handle button to indicate hot/cold temperature.
- Touch-Clean® sprayhead.
- 3/8" O.D. straight, staggered pex supply tubes - 33 7/16" (849 mm) and 34 15/16" (887 mm) long.
- Standard 3/8" (10 mm) compression gasket fittings.
- Integral double check valves in spout.

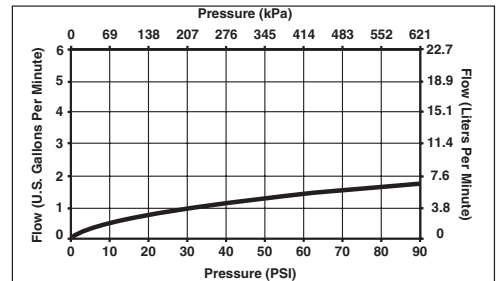
### WARRANTY

- Lifetime Faucet and Finish Limited Warranty to the original consumer purchaser to be free from defects in material and workmanship.
- 5 Year Limited Warranty for usage in all industrial, commercial and business applications.



### COMPLIES WITH:

- ASME A112.18.1 / CSA B125.1
- Indicates compliance to ICC/ANSI A117.1
- Verified compliant with .25% weighted average Pb content regulations.



# DELTA

## FAUCET COMPANY

55 E. 111th Street, Indianapolis, Indiana 46280  
 395 Matheson Blvd. E., Mississauga, ON L4Z 2H2  
 © 2009 Masco Corporation of Indiana