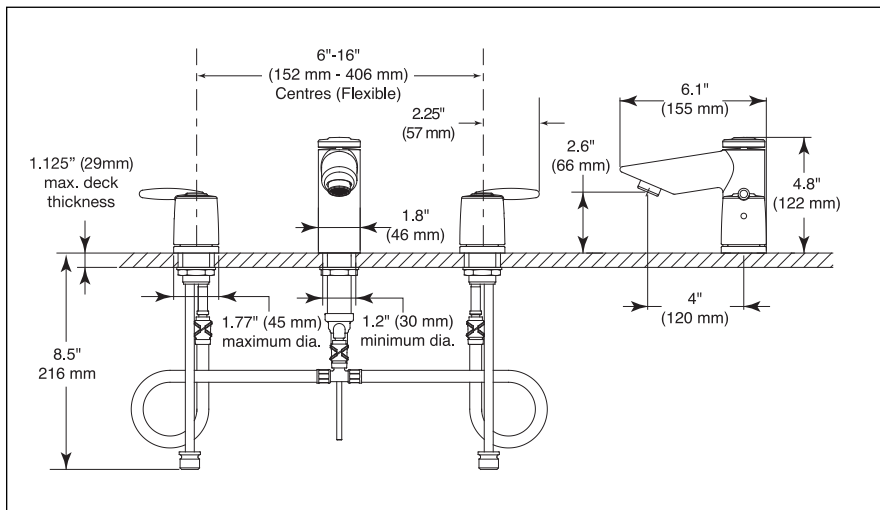


Submitted Model No.: \_\_\_\_\_

Specific Features: \_\_\_\_\_



## LAVATORY FAUCETS

- Grail™ Series
- Two Handle Widespread
- 3 Hole Sink Applications

### STANDARD SPECIFICATIONS:

- Two handle lavatory faucets for concealed mounting on three hole sinks.
- Widespread - 6" (152mm) to 16" (406 mm) centers.
- Solid brass fabricated end valve and cast spout bodies.
- Hot and cold stems are interchangeable.
- 1/4 turn stops.
- Control mechanism shall be of the rotating cylinder type with stainless steel plate and 180° rotation, with replaceable non-metallic seats operating in stainless steel lined sockets.
- 3/8" O.D. copper supply tubes.
- 1/2"-14 NPSM adapters.
- Models have 50/50 drain with pop-up type fitting with plated flange and stopper.
- Quick-Snap® installation.

### WARRANTY

- Lifetime Faucet and Finish Limited Warranty to the original consumer purchaser to be free from defects in material and workmanship.
- 5 Year Limited Warranty for usage in all industrial, commercial and business applications.

### COMPLIES WITH:

- NSF 61
- ASME A112.18.1/CSA B125.1
- Indicates ADA compliance to ICC/ANSI A117.1
- CSA Certified
- EPA WaterSense

