

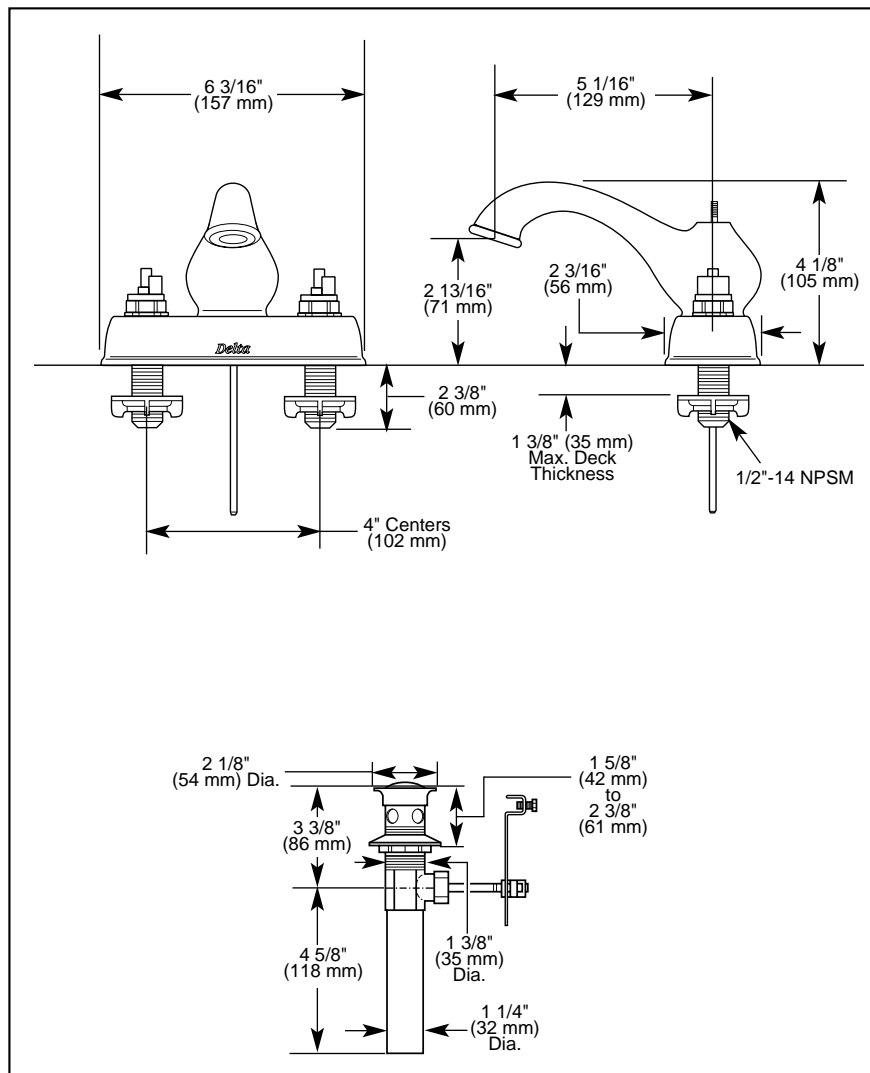
# DELTA<sup>®</sup>

## LAVATORY FAUCETS

- Leland™ Series
- Two Handle Deck Mount
- 3 Hole Sink Applications
- 4" Centerset

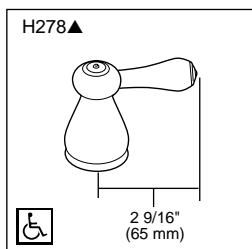
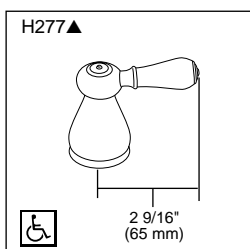
Submitted Model No.: \_\_\_\_\_

Specific Features: \_\_\_\_\_



### Available LHP Handle Options

▲ Designate proper finish suffix



Delta reserves the right (1) to make changes in specifications and materials, and (2) to change or discontinue models, both without notice or obligation. Dimensions are for reference only. See current full-line price book for finish options and product availability.

DSP-L-2578-LHP Rev. A

### STANDARD SPECIFICATIONS:

- Solid brass fabricated body.
- 4" (102 mm) centerset.
- 5 1/16" (129 mm) long, 4 1/8" (105 mm) high rigid spout.
- LHP-Less Handle Program. See handle options below.
- 1/4 turn handle stops.
- Control mechanism is a rotating cylinder type with stainless steel plate and 90° rotation, with replaceable non-metallic seats operating in stainless steel lined sockets.
- Hot and cold stems are interchangeable.
- 1/2"-14 NPSM threaded male inlet shanks.
- LHP models have metal drain with pop-up type fitting with plated flange and stopper.

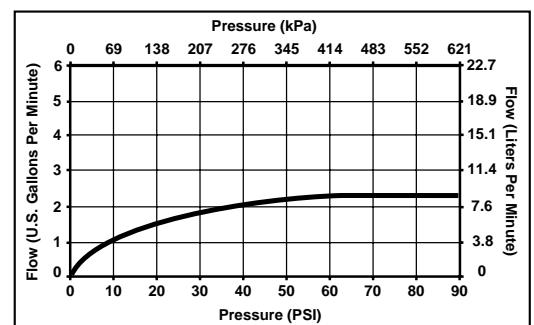
### WARRANTY

- Lifetime Faucet and Finish Limited Warranty to the original consumer purchaser to be free from defects in material and workmanship.
- 5 Year Limited Warranty for usage in all industrial, commercial and business applications.



### COMPLIES WITH:

- ASME A112.18.1 / CSA B125.1
- ASME A112.18.2 / CSA B125.2
- ☐ Indicates ADA compliance to ICC/ANSI A117.1



Indianapolis, Indiana 46280  
A Division of Masco Corporation of Indiana  
© 2006 Masco Corporation of Indiana