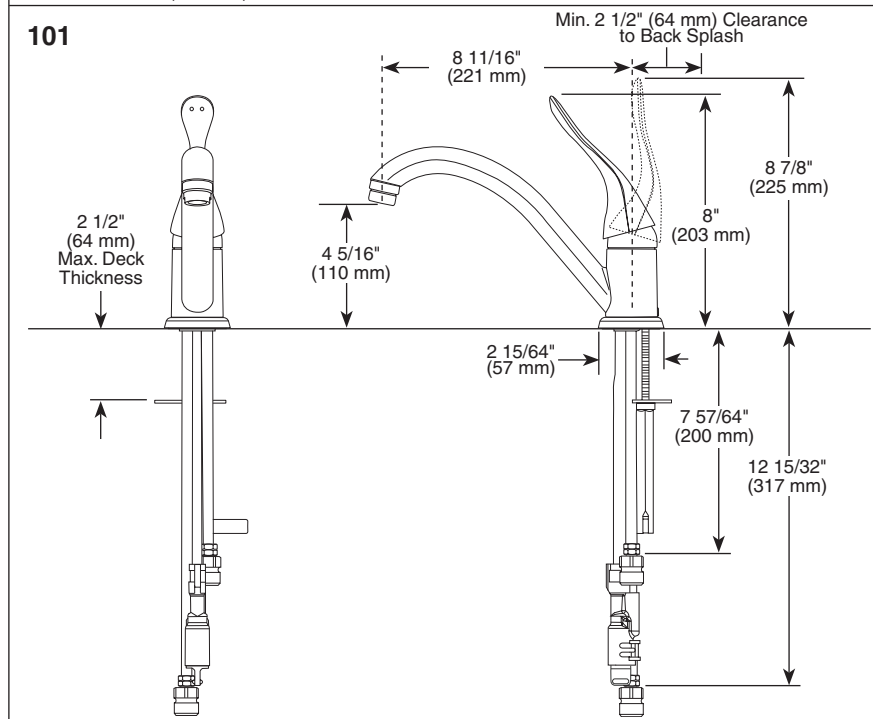
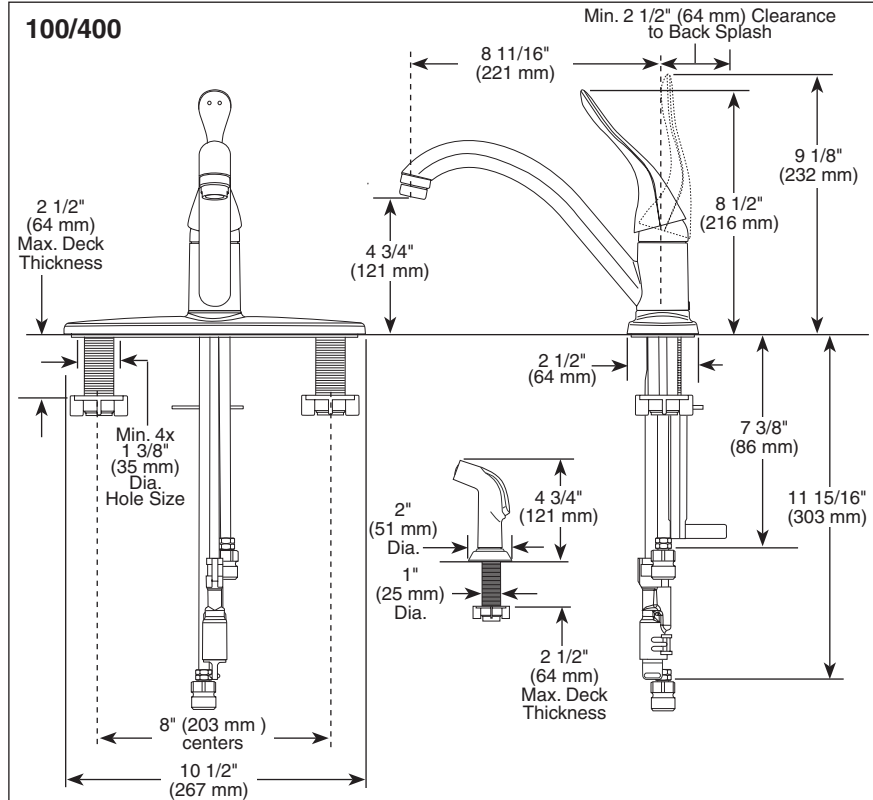


Submitted Model No.: \_\_\_\_\_

Specific Features: \_\_\_\_\_



## KITCHEN FAUCETS

- Single Handle
- Single, 3 and 4 Hole Sink Applications

### STANDARD SPECIFICATIONS:

- Single handle kitchen deck faucets for exposed mounting on single, three or four hole sinks.
- All metal fabricated body.
- $8\frac{11}{16}$ " (221 mm) long spout swings  $180^\circ$ .
- 1.5 gpm (5.7L/min.) vandal resistant aerator.
- Lever handle shall return to neutral position when faucet is turned off.
- Red and blue on handle to indicate hot/cold temperature.
- Control mechanism shall be the diamond coated ceramic cartridge.
- Adjustable handle limit stop.
- $3/8$ " O.D. straight, staggered copper supply tubes with  $3/8$ " fittings.
- Model 400 series with  $45$ " (1143 mm) hose and spray attachment has anti-siphon device as integral part of faucet.
- Mounts on standard  $1\frac{3}{8}$ " (35 mm) diameter holes on  $8$ " (203 mm) centers.

▲ Designate proper finish suffix

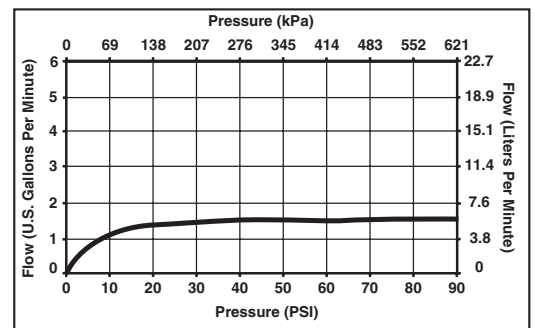
### WARRANTY

- Lifetime Faucet and Finish Limited Warranty to the original consumer purchaser to be free from defects in material and workmanship.
- 5 Year Limited Warranty for usage in all industrial, commercial and business applications.



### COMPLIES WITH:

- ASME A112.18.1 / CSA B125.1
- NSF 61
- Indicates compliance to ICC/ANSI A117.1
- Verified compliant with .25% weighted average Pb content regulations.



55 E. 111th Street, Indianapolis, Indiana 46280  
 395 Matheson Blvd. E., Mississauga, ON L4Z 2H2  
 © 2010 Masco Corporation of Indiana

Delta reserves the right (1) to make changes in specifications and materials, and (2) to change or discontinue models, both without notice or obligation. Dimensions are for reference only. See current full-line price book or [www.specselect.com](http://www.specselect.com) for finish options and product availability.

DSP-K-100LF-HDF Rev. A