

### SINGLE HANDLE DECK MOUNT VESSEL FILLER FAUCET (Produced after 05.28.08)


#### Description

- Single lever, single hole mount
- Brass grid strainer drain with cover for vessels with or without overflow

#### Flow & Valving

- See Chart

#### Standards

- ASME A112.18.1
- CSA B125
- NSF 61-9
- Energy policy act of 1992
- Listed IAPMO/UPC
- ADA Accessibility Guidelines for Buildings and Facilities - 4.27.4 Controls and Mechanisms 
- Manufactured in compliance with EPA High Efficiency Lavatory Faucet Specification

#### Warranty

Danze products are covered by a manufacturer's limited "lifetime" warranty for manufacturing defects.

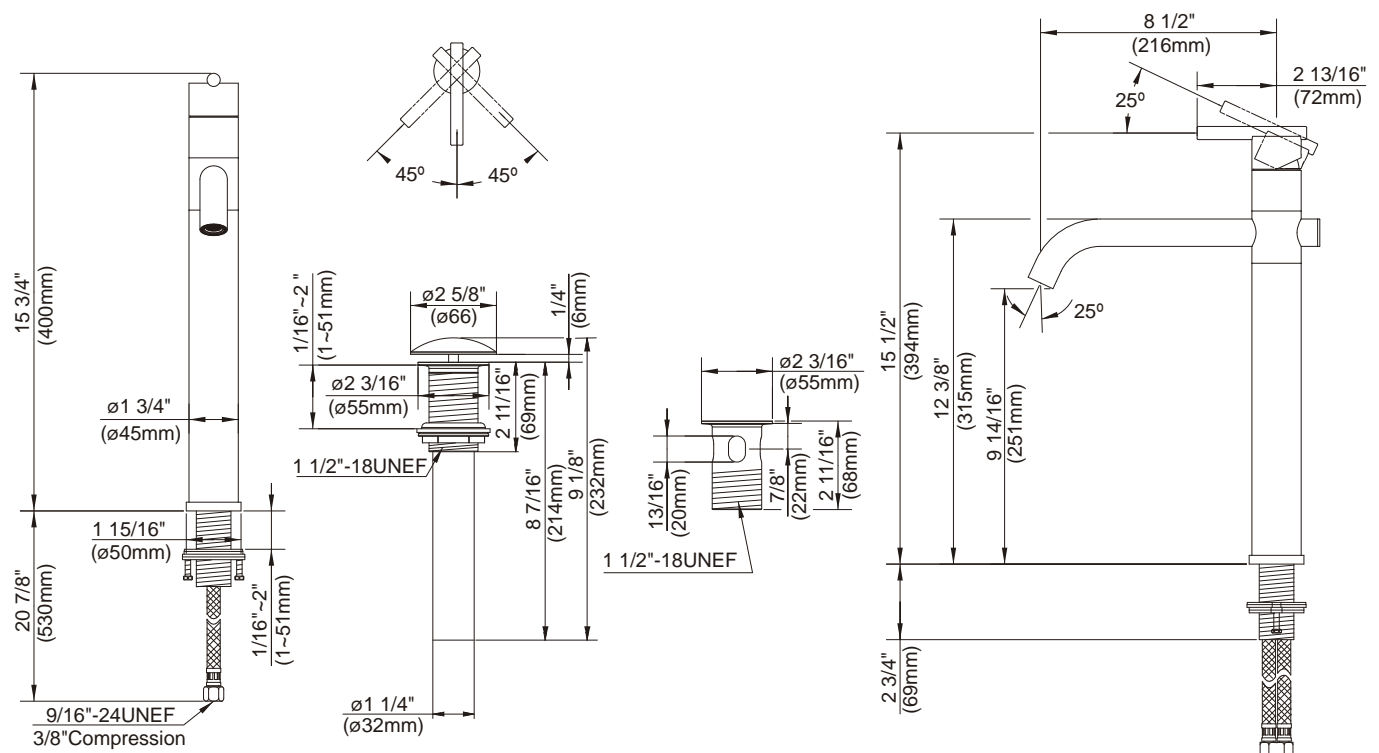
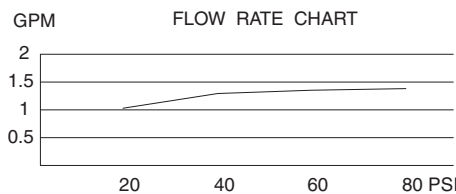


D222658  
PARMA™



#### Available Colors & Finish

- Chrome
- Brushed Nickel (BN)



Specific Features: \_\_\_\_\_ Submitted Model No.: \_\_\_\_\_

SD222658/09-08.03