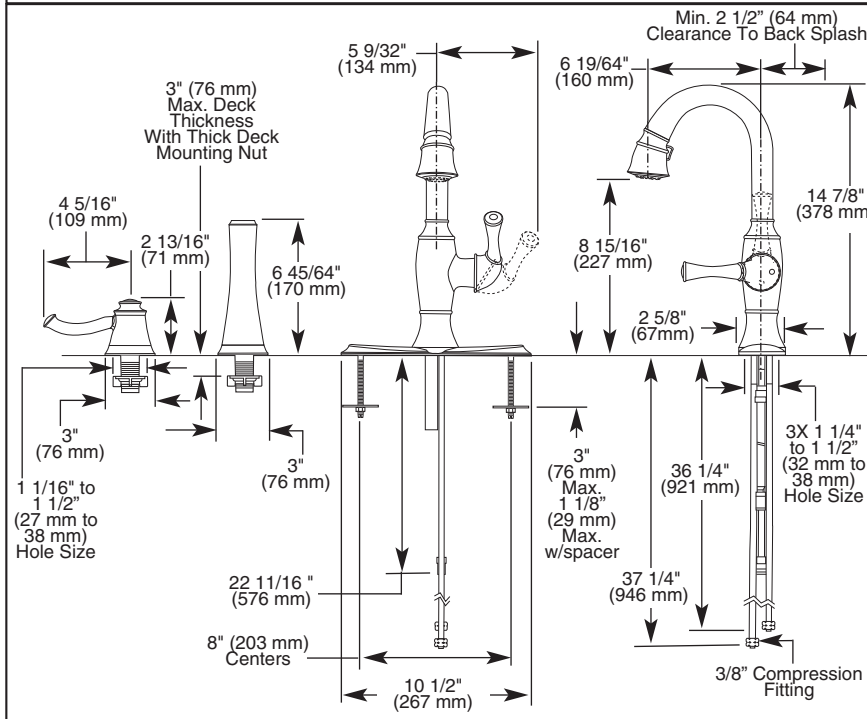
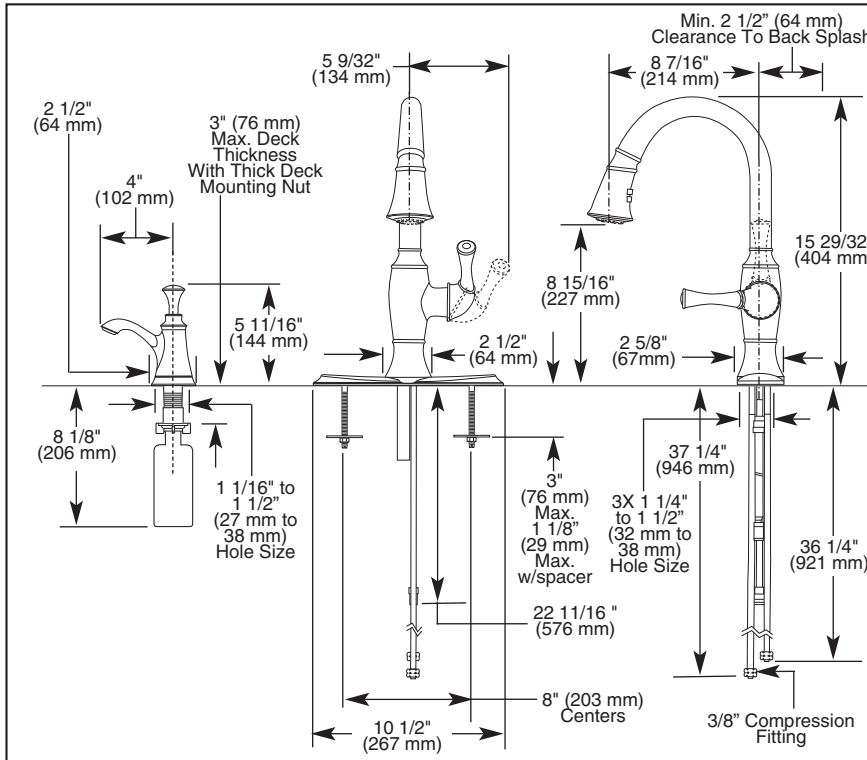


Submitted Model No.: _____

Specific Features: _____



▲ Designate proper finish suffix

Delta reserves the right (1) to make changes in specifications and materials, and (2) to change or discontinue models, both without notice or obligation. Dimensions are for reference only. See current full-line price book or www.brizo.com for finish options and product availability.
BSP-K-63003LF Rev. E

BRIZO® KITCHEN FAUCETS

- Talo® Collection
- Single Handle Deck Mount
- 4-Function Pull-Down with Pause and Volume Control
- Single, 2, 3, or 4 Hole Sink Applications
- Centermount or 8" (203 mm) Centers w/ Optional 10 1/2" (267 mm) Escutcheon
- Optional Vase or Towel Bar Interchangeable with Soap Dispenser
- MagneDock® Magnetic Docking

STANDARD SPECIFICATIONS:

- Single handle, 4-function pull-down kitchen faucet for exposed mounting on single, two, three, and four hole sinks.
- Solid brass fabricated body.
- 15 29/32" (404 mm) high, 8 7/16" (214 mm) long, spout swings 360°.
- Lever handle. Control mechanism shall be full-motion valve cartridge.
- Touch-Clean® sprayhead.
- Quick connect hoses.
- Pull-down wand operates in an aerated or spray mode via ergonomic buttons.
- Red/blue graphics on handle button to indicate hot/cold temperature.
- MagneDock® magnetic docking.
- Thin deck mounting aid to help secure product if used on thin sinks.
- Dual integral check valves in adapter assembly.
- Spacer for mounting nut to reduce number of turns required for installation.
- Mounting wrench to assist in tightening mounting nut securely.
- Hose travels inside mounting shank so it will not interfere with deck edges.
- Keyed trim ring and 10" (254 mm) escutcheon to help alignment and aid installation.

Note: See 63903LF-* for matching bar/prep.

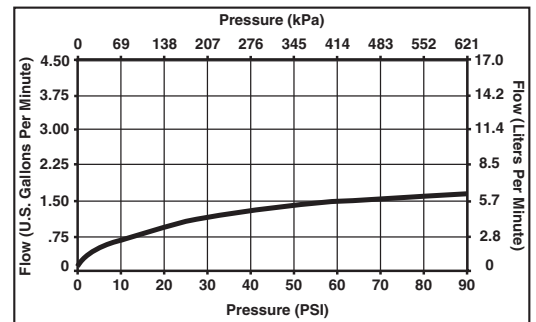
WARRANTY

- Lifetime Faucet and Finish Limited Warranty to the original consumer purchaser to be free from defects in material and workmanship.
- 5 Year Limited Warranty for usage in all industrial, commercial and business applications.



COMPLIES WITH:

- ASME A112.18.1 / CSA B125.1
- Indicates compliance to ICC/ANSI A117.1
- Verified compliant with .25% weighted average Pb content regulations.



Delta Faucet Company
Indianapolis, Indiana 46280
A Division of Masco Corporation of Indiana
© 2011 Masco Corporation of Indiana