

Braeburn®

Model 3200 Multi-Stage 2 Heat / 2 Cool Conventional or Heat Pump Thermostat

Premier Series Non-Programmable



Features

- Large Display with Bright Blue Backlight
- Non-Volatile Memory to Retains User Settings
- Circulating Fan Mode
- Hardwire or Battery Powered
- Residual Cooling Fan Delay
- Separate Heating and Cooling Set Points
- Compressor Short Cycle Protection
- Adjustable 1st and 2nd Stage Temperature Differential
- Auxiliary Heat Fossil Fuel Switch
- Low Battery Indication
- ESD Guard™ Electronic Circuitry
- Front Access Reset Button
- Easy Access Front Battery Door
- F° / C° Switch
- Mount to Horizontal or Vertical Box
- Separate O & B Terminals
- Keypad Lockout

The
brighter
choice®

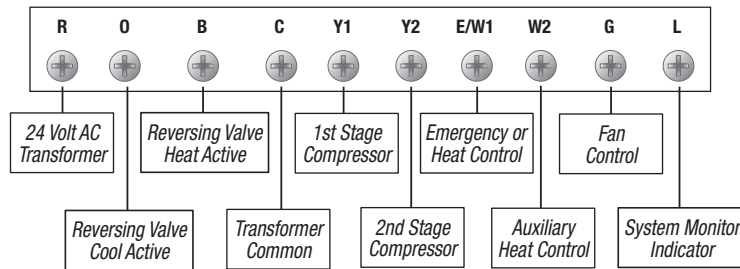


Premier Series

FREE Contractor Branding! Visit www.braeburnonline.com

Braeburn®

Model 3200 Terminal Designations



Architectural Specifications

The digital non-programmable thermostat shall be a Braeburn®, model number 3200, 4.63" high x 5.00" wide x 1.25" deep, powered independently with either 24 Volt AC or with two "AA" alkaline batteries (3.0 Volt DC). The thermostat shall be compatible with multi-stage conventional or heat pump systems with up to two stages of heating and two stages of cooling. The thermostat shall have a bright blue backlight display, front loading battery door, separate sub-base for trouble free installation and keypad lockout. Temperature control range shall be between 45° and 90° F (7° and 32° C), accuracy of +/- 1° F (+/- .5° C), humidity range between 5% and 95% relative humidity. The thermostat shall include circulating fan mode, residual cooling fan delay, separate heating and cooling set points, non-volatile memory to retain user settings, and auxiliary heat fossil fuel switch. Thermostat shall have low battery indication and a front reset button will return user settings to default values when pressed. The thermostat can be mounted to a horizontal or vertical junction box.

Product Specifications

| | |
|----------------------------------|--|
| Dimensions: | 4.63" x 5.00" x 1.25" |
| Electric Rating: | 24 Volt AC (18-30 Volt AC) 1 amp maximum load per terminal 4 amp total maximum load (all terminals) |
| AC Power: | 18-30 Volt AC |
| DC Power: | 3.0 Volt DC (2 "AA" alkaline batteries included) |
| Compatibility: | Multi-stage conventional or heat pump systems with up to two stages of heating and two stages of cooling |
| Control Range: | 45° to 90° F (7° to 32° C) |
| Display Range: | 40° to 99° F (4° to 37° C) |
| Accuracy: | +/- 1° F (+/- .5° C) |
| Temperature Differential: | 1st Stage - .5°, 1°, or 2° F (.25°, .5°, or 1° C) 2nd Stage - 2°, 3°, 4°, 5°, or 6° F (1°, 1.5°, 2°, 2.5°, or 3° C) |
| Storage Temperature: | 14° to 140° F (-10° to 60° C) |
| Operating Humidity: | 5% to 95% Relative Humidity |
| Terminations: | R, O, B, C, Y1, Y2, E/W1, W2, G, L |

Shipping Information

| | |
|--|---|
| INDIVIDUAL CARTON | MASTER CARTON |
| Dimensions: 5.25" x 5.88" x 2.00" | Quantity: 6 |
| Weight: .70 lbs. | Dimensions: 6.25" x 11.75" x 6.25" |
| | Cubic Feet: .26 |
| | Weight: 4.2 lbs. |

Braeburn 3200 Replaces*

| | |
|-----------------------|--------------------------------|
| Honeywell® | TH5220 |
| White-Rodgers® | 1F83-0422, 1F83-0471, 1F89-211 |
| Robertshaw® | RS4220 |
| ICM® | SC2300, SC2301, SC2311 |
| LuxPro® | PSD122E |

*Verify specific application requirements.
All trademarks are the property of their respective owners.

Accessories

| |
|---|
| 2950 Universal Wall Plate (6.5" x 6.5" x .125") |
| 5970 Universal Thermostat Guard |

FREE Contractor Branding Available!

Visit our website (www.braeburnonline.com) for more information, contact your local distributor or call our sales department toll-free at 866.268.5599 (U.S.), +1.630.844.1968 (Outside the U.S.).

Date: _____
Job Name: _____
Location: _____
Contractor: _____

Engineer: _____
Model No.: _____
Submitted By: _____
Submitted For Approval: _____ **Record:** _____

Braeburn Systems LLC • 2215 Cornell Avenue • Montgomery, IL 60538 • Toll-Free 866.268.5599 (U.S.) +1.630.844.1968 (Outside the U.S.)