

- Ideal for Barrier-Free Shower Rooms

Specifications

Shower Stall Configuration

Available in a right or left-handed configuration depending on location of valve.

Construction

Materials

All exposed materials, except for phenolic seat, are type 304 stainless steel or polished chrome-plated brass. Valve bodies are brass casting. Grab bar is 18 gauge.

Barrier-Free (ADA Compliant)

When installed properly in a 3' x 3' stall, the HN300 provides a shower stall designed to comply with all known ADA guidelines on reaches, clearances, and operation. Controls are mounted 38"–48" above the floor to accommodate all users.



Check local applicable codes for dimensional compliance.

Standard Equipment

Showerhead

Standard fixed direction adjustable sprayhead.

Diverter Valve

Lever handle operation for easy transfer of water flow between fixed and hand-held shower spray.

Hand-Held Shower Spray

Consisting of hand shower with on-off control, a 60" stainless steel flexible hose and post style mounting bracket to hold to wall. Elevated in-line backflow preventer with quick-disconnect for flexible hose.

Flow Control

A 2.0 GPM (7.6 LPM) flow control is standard. Actual flow may vary, but will not exceed 2.5 GPM (9.5 LPM) max.

L-Shaped Grab Bar

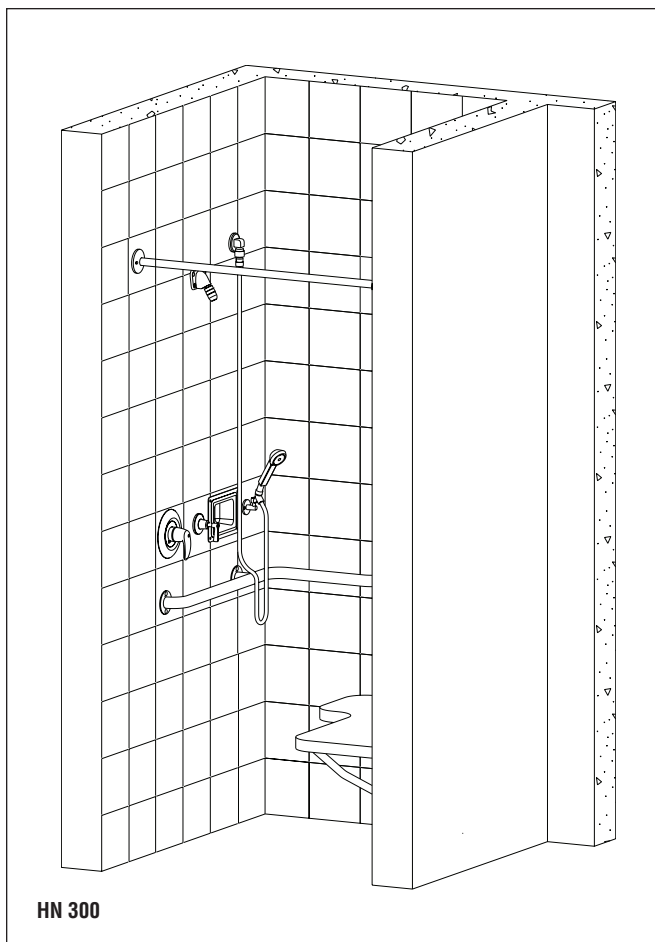
Grab bar fabricated of 18 gauge 1-1/2" O.D. stainless steel tubing with a 1-1/2" safety statute clearance. Flanges are 11 gauge. Load capacity in excess of 300 lbs.

Barrier-Free Seat

Reversible phenolic shower seat. Load capacity of 250 lbs. See technical data document 9027 for additional information.

Shower Curtain

Vinyl shower curtain with heavy duty curtain rod and hooks.



Model <input type="checkbox"/> HN300	Description ADA-Compliant In-Wall Shower
Standard Selections (Must select one from each category)	
Valve Type (select one)	
<input type="checkbox"/> EF	Equa-Flo Pressure-Balancing Valve
<input type="checkbox"/> HD	Equa-Flo HD Pressure-Balancing Valve
<input type="checkbox"/> TMV	Thermostatic Mixing Valve
<input type="checkbox"/> AST	Air Metering Valve
<input type="checkbox"/> AZ	Infrared Metering Valve**
<input type="checkbox"/> SVL	Single Compression Valve w/Lever Handle
<input type="checkbox"/> TT	TouchTime® Metering Valve - 1 Minute*
<input type="checkbox"/> TT3	TouchTime® Metering Valve - 3 Minute*
Shower Stall Configuration (select one)	
<input type="checkbox"/> VL/SR	Valve Left/Seat Right
<input type="checkbox"/> VR/SL	Valve Right/Seat Left
<input type="checkbox"/> RSS	Reversible Phenolic Shower Seat
<input type="checkbox"/> RHS	Right Hand Stainless Steel Seat
<input type="checkbox"/> RSS	Reversible Phenolic Shower Seat
<input type="checkbox"/> LHS	Left Hand Stainless Steel Seat

Optional Selections

Showerhead Variations

- ☐ SX Severe Service Showerhead
- ☐ SF Deluxe Showerhead with Ball Joint
- ☐ ES Economy Soft Flow with Ball Joint

Flow Control (Not available with SF Showerhead)

- ☐ G 1.5 GPM (5.7 LPM) Flow Control (Showerhead and Hand Shower)

Volume Control (Not available with SX or ES Showerhead)

- ☐ AKV Allen Key Volume Control
- ☐ THV T-Handle Volume Control

Ball Joint (Not available with SX or ES Showerhead)

- ☐ LBJ Lockable Ball Joint

Miscellaneous

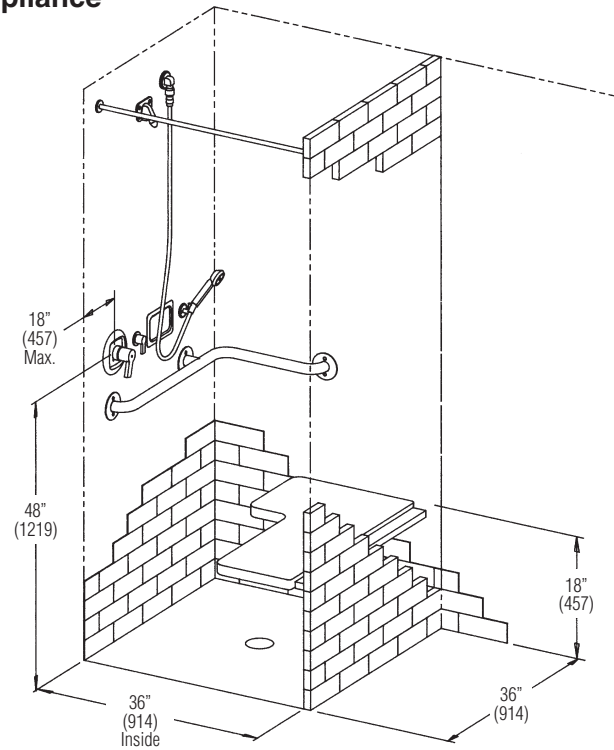
- ☐ AP Anchor Plate for Showerhead
- ☐ BP Back Plate for Showerhead
- ☐ ST Stops in Supplies (each)
- ☐ RP Reinforced Partition Kit
- ☐ DBS Deduct Barrier-Free Seat
- ☐ DCR Deduct Curtain, Rod and Hooks
- ☐ DGB Deduct Grab Bar
- ☐ SD Wall-Mount Soap Dish
- ☐ RSD Recessed Soap Dish

**Non-cancelable, non-returnable

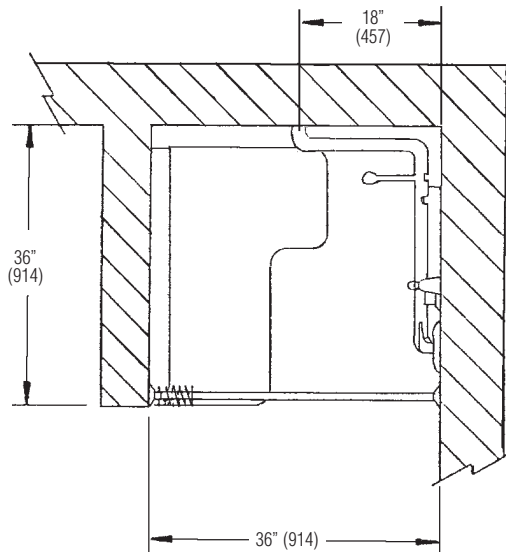
*AZ and TT valves require optional 24V Class 2 transformers, available as a separate item from Bradley.

Dimensions for ADA Compliance

(mm)



Valve Right/Seat Left Configuration



Valve Left/Seat Right Configuration

