

- ADA and TAS Compliant
- Serves One to Three Users at a Time
- Standard Lavatory Spacing on 30" Centers
- Continuous Bowl is Constructed of Terreon® or Terreon®RE Solid Surface Material
- Select a Bradley Faucet or faucet by others
- Available in 32 Terreon or TerreonRE Colors

Specifications

Accommodates one to three users. Units handle washroom traffic quickly and economically, while providing each user with personal space. The Express® Deck System is designed with standard lavatory spacing positioned on 30" centers.

Construction

Bowl

Constructed of Terreon, a densified solid surface material composed of polyester resin, or TerreonRE, a densified solid surface material composed of a bio-based resin and preconsumer recycled granules. Terreon and TerreonRE are resistant to chemicals, stains, burns and impact. Surface damage can be easily repaired with everyday cleansers or fine grit abrasives. Terreon and TerreonRE are certified by NAHB to meet ANSI Z124.3, Z124.6 and ANSI/ICPA SS-1. Terreon and TerreonRE are GREENGUARD® certified as low-emitting materials.

Pedestal

Panel is composed of vacuum-formed acrylic laminate. Highly resistant to impact, abrasion, acid and corrosion. The panel will not chip, peel or flake.

Support Frame

Bowl assembly and pedestal panel are secured to a heavy gauge stainless steel support frame mounted to wall.

Vandal Resistance

Water supplies, valving, waste assembly and other optional items are concealed within the pedestal/frame.

Code Compliance and Certifications

ANSI Standards

Terreon and TerreonRE are NAHB certified to meet ANSI Z124.3, Z124.6 and ANSI/ICPA SS-1.

cUPC Approval

Express Lavatory Systems are Uniform Plumbing Code (UPC), International Plumbing Code (IPC) and National Plumbing Code of Canada (NPC) approved through the International Association of Plumbing and Mechanical Officials (IAPMO). Manufactured in compliance with IGC 156, CSA B45 Series (R08) & ASME A112.18.1/CSA B125.1.



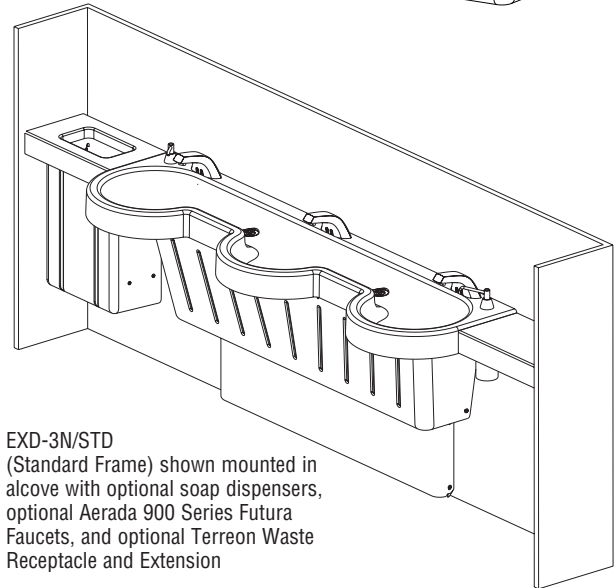
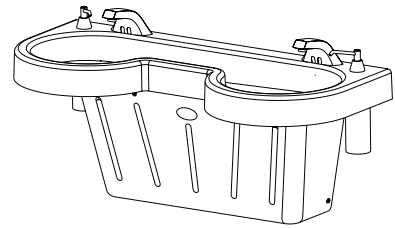
Verify all rough-in dimensions prior to installation.

Consult local and national codes. Conformity and compliance to local and national codes is the responsibility of the installer.

Plumbing Fixtures
Document No. 1062

Page 1 of 6
This information is subject to change without notice.
11/15/2012

EXD-2N/WH
(Wall-Hung Frame)
shown with optional
soap dispensers and
optional Aerada™ 900
Series Futura Faucets



EXD-3N/STD
(Standard Frame) shown mounted in
alcove with optional soap dispensers,
optional Aerada 900 Series Futura
Faucets, and optional Terreon Waste
Receptacle and Extension

- ☒ This plumbing fixture is designed for hand washing only. It is not Intended to dispense water for human consumption through drinking or for preparation of food or beverages.

Standard Frame

The standard frame on the Express® EXD-Series includes a scuff base and is designed to comply with all ADA guidelines on reaches, clearances and operation for adult users.

Wall-Hung Frame

The wall-hung frame on the Express® EXD-Series (less scuff base above) is designed to mount at different heights (adult and children) to comply with guidelines on reaches, clearances and operation for various codes including, ADA Accessibility Guidelines for Buildings and Facilities (ADAAG) and TAS (Texas Accessibility Standards). Always check your local and state codes.

Standard Equipment

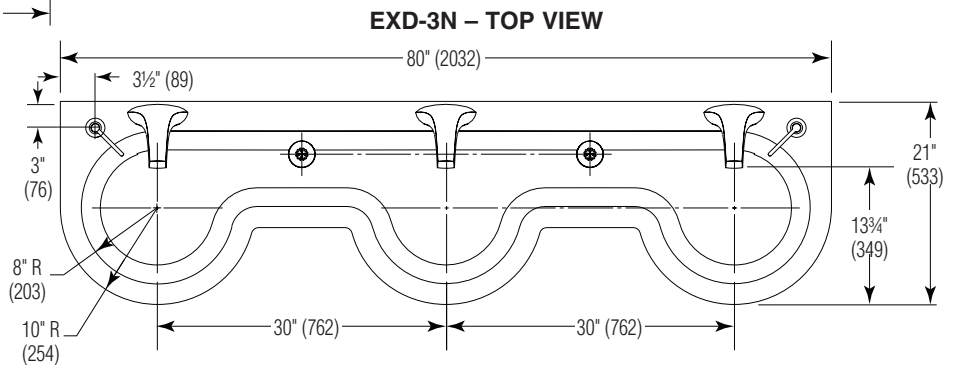
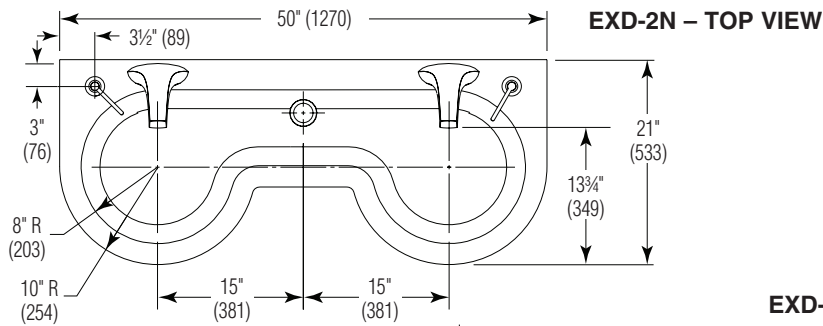
Bowl with two or three lavatories, pedestal, stainless steel mounting frame (as described above), and the following fittings: P-trap; tailpiece.

For more information on faucets, valves, transformers, cabinets, waste receptacles, and the sensor-operated soap dispenser, please visit bradleycorp.com.

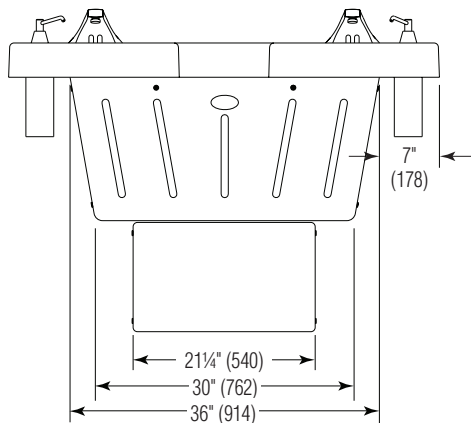
© 2012 Bradley
P.O. Box 309, Menomonee Falls, WI 53052-0309
Phone: 800.BRADLEY (800.272.3539) Fax: 262.251.5817
bradleycorp.com

Dimensions

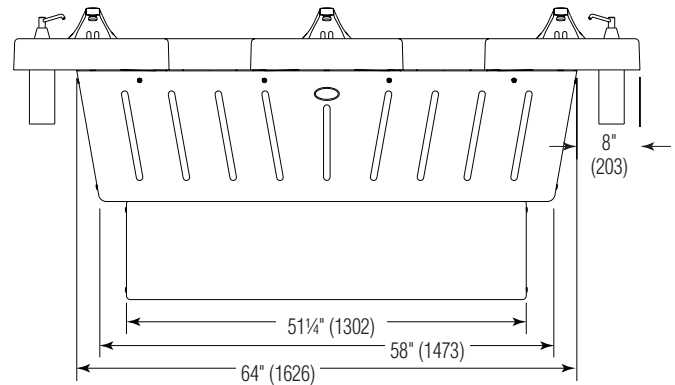
(mm)



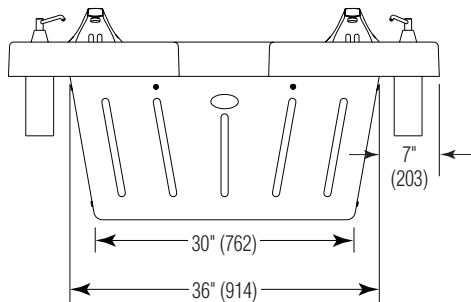
EXD-2N – FRONT VIEW – STANDARD FRAME



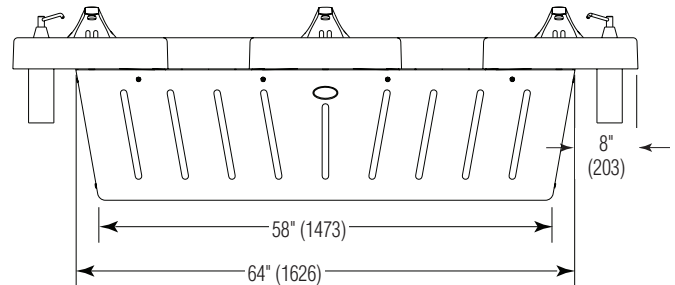
EXD-3N – FRONT VIEW – STANDARD FRAME



EXD-2N – FRONT VIEW – WALL-HUNG FRAME

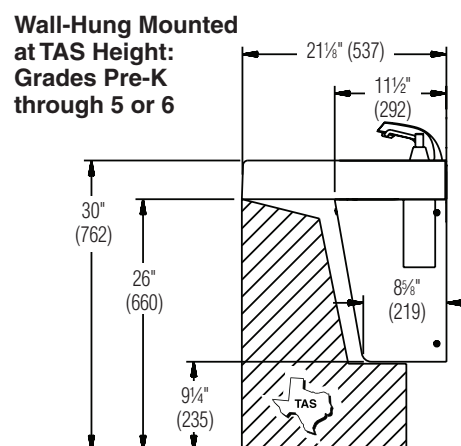
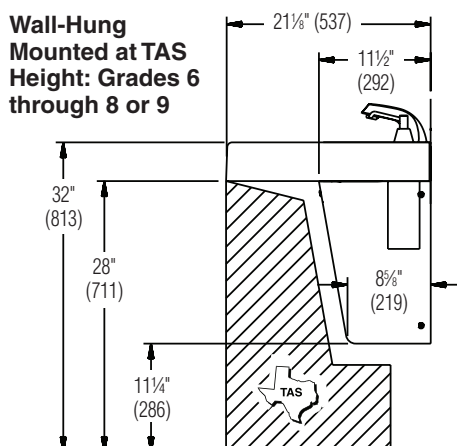
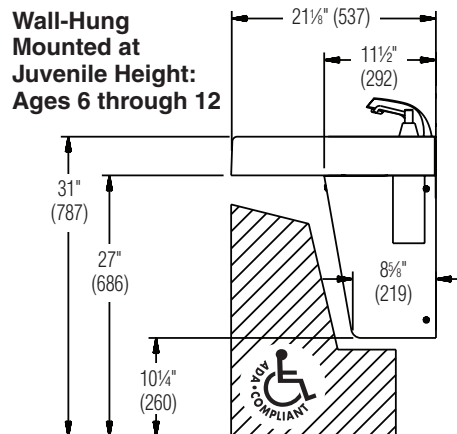
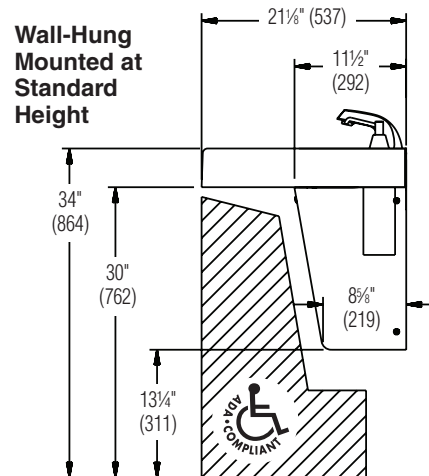
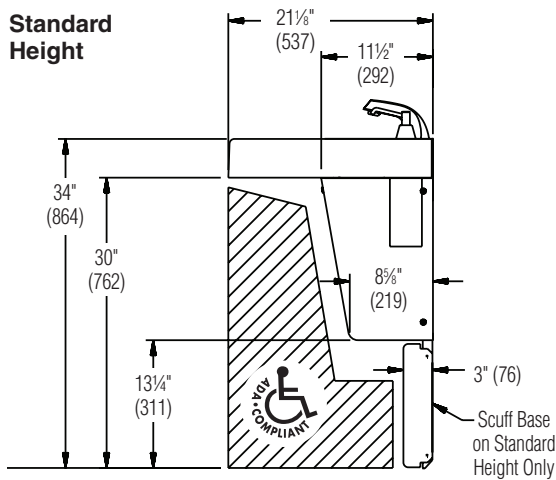


EXD-3N – FRONT VIEW – WALL-HUNG FRAME



Dimensions – Side View

(mm)



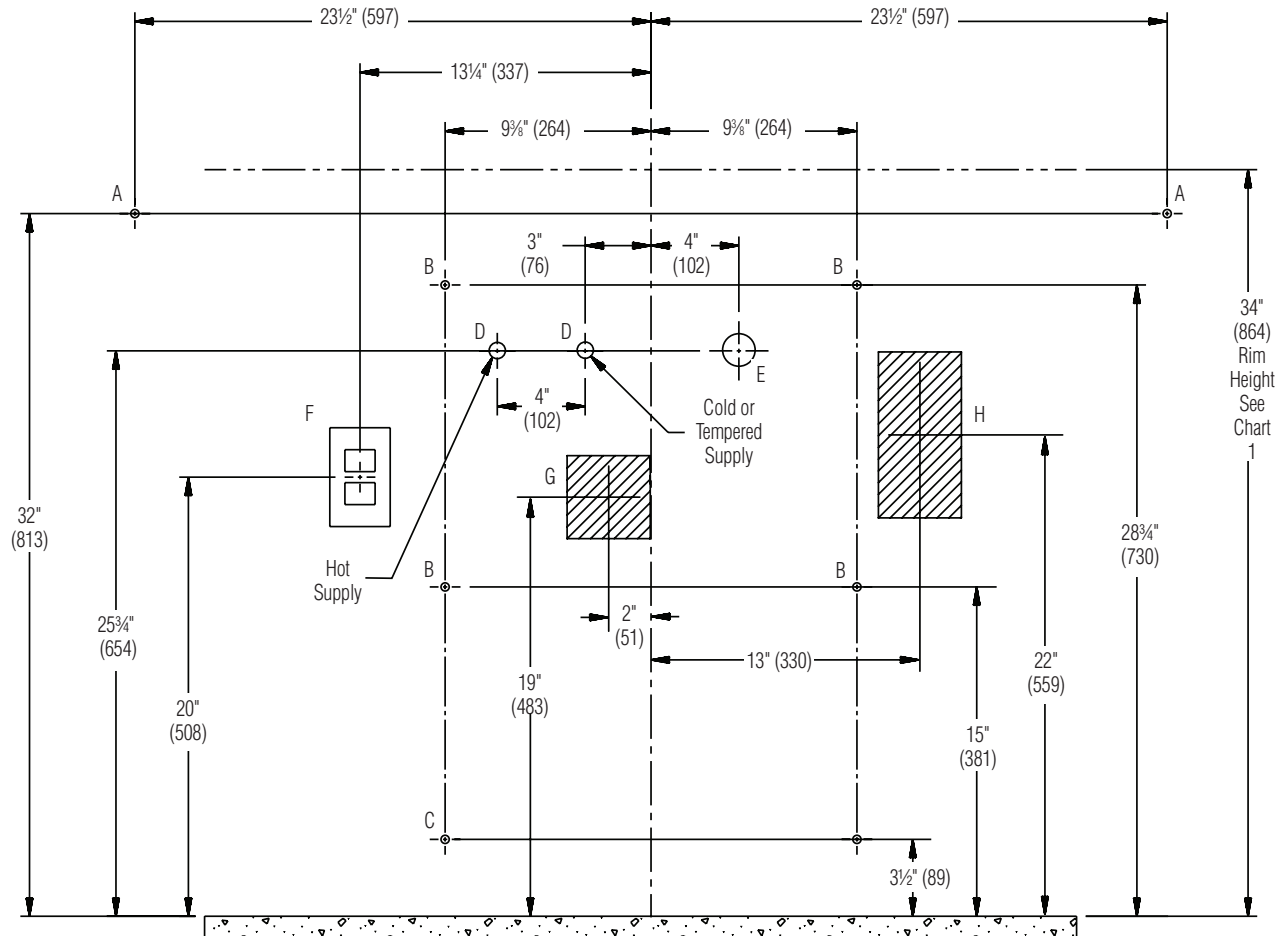


CHART 1

RIM HEIGHT	VERTICAL HEIGHT ADJUSTMENTS A – H	FIXTURE STYLE
34"	None	Standard Height
34"	None	Wall-Hung
32"	Subtract 2"	TAS, Grades 6 through 8 or 9
31"	Subtract 3"	Juvenile Height
30"	Subtract 4"	TAS, Pre-K through 5 or 6

CHART 2

CODE	DESCRIPTION	QTY.
A	3/8" Bowl Wall Anchors with a Min. Pull-Out Force of 1000 lbs.	2
B	3/8" Main Frame Wall Anchors with a Minimum Pull-Out Force of 1000 lbs.	4
C	3/8" Base Frame Wall Anchors with a Min. Pull-Out Force of 1000 lbs. Standard Frame Option Only.	2
D	1/2" Nominal Copper Tubing for Hot/Cold Supplies, Stub-Out 2" from Wall	2
E	1 1/2" NPT Drain, Stub-Out 2" from Wall	1
F	110V GFCI Protected Elec. Outlet	1
G	Optional Heater, Electric Box Location. 4" L x 4" W x 4" H - Option 1	1
H	Optional Heater, Electric Box Location. 4" L x 4" W x 8" H - Option 2	1

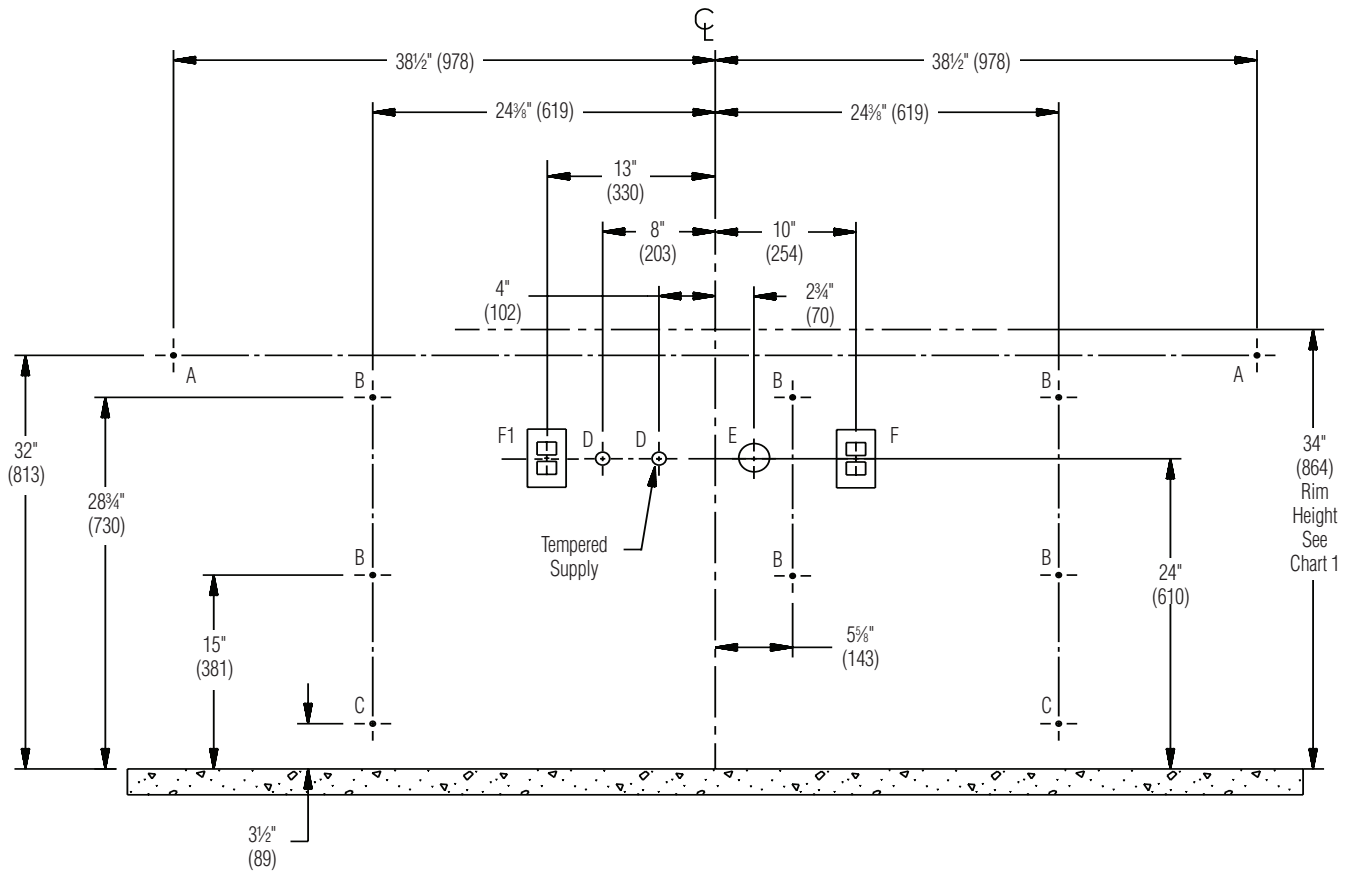


CHART 1

RIM HEIGHT	VERTICAL HEIGHT ADJUSTMENTS A – H	FIXTURE STYLE
34"	None	Standard Height
34"	None	Wall-Hung
32"	Subtract 2"	TAS, Grades 6 through 8 or 9
31"	Subtract 3"	Juvenile Height
30"	Subtract 4"	TAS, Pre-K through 5 or 6

CHART 2

CODE	DESCRIPTION	QTY.
A	3/8" Bowl Wall Anchors with a Min. Pull-Out Force of 1000 lbs.	2
B	3/8" Main Frame Wall Anchors with a Minimum Pull-Out Force of 1000 lbs.	6
C	3/8" Base Frame Wall Anchors with a Min. Pull-Out Force of 1000 lbs. Standard Frame Option Only.	2
D	1/2" Nominal Copper Tubing for Hot/Cold Supplies, Stub-Out 2" from Wall	2
E	1 1/2" NPT Drain, Stub-Out 2" from Wall	1
F	110V GFCI Protected Elec. Outlet	1
F1	110V GFCI Protected Elec. Outlet – OPTIONAL	1
G	Optional Heater, Electric Box Location. 4" L x 4" W x 8" H - Option 1	1
H	Optional Heater, Electric Box Location. 4" L x 4" W x 8" H - Option 2	1



EXD-2N, EXD-3N Express® Deck Lavatory System – EXD-Series

Models (Must select one)

Model	Description
<input type="checkbox"/> EXD-2N	Express Deck Lavatory System, 2-Station
<input type="checkbox"/> EXD-3N	Express Deck Lavatory System, 3-Station

Standard Selections (Must select one from each category)

Faucet Drilling* (select one)

- ☐ 4" SET 4" Centerset ☐ 8" SET 8" Centerset ☐ SHANK Centershank

Pedestal (select one)

- ☐ STD Standard Frame - 34" (With Scuff Base) ☐ WH Wall-Hung Frame

Soap Dispenser (select one)

- ☐ 6324 16oz. Plastic Globe, 4" Spout ☐ 6315 Sensor-Operated Soap Dispenser
☐ 6324-67 16oz. Stainless Steel Globe, 4" Spout ☐ SDO Soap Drilling Only
☐ 6324-68 32oz. Plastic Globe, 4" Spout ☐ NSD No Soap Dispenser

For 6315 Dispenser (must order as separate line items)

- ☐ P19-232B 1000-Shot or 27 oz. Lotion Soap with Moisturizer (4 Bottles per Case)
☐ P19-232A 2000-Shot or 54 oz. Lotion Soap with Moisturizer (4 Bottles per Case)
☐ P19-231F AC Adapter - 6315 Soap Dispenser

Water Supply (select one)

- ☐ TMA Navigator® Thermostatic Mixing Assembly (Hot and Cold Supplies)
☐ TL Single Tempered Line
☐ HEAT277 Tankless Electric Water Heater, 277 Volts
☐ HEAT240-208 Tankless Electric Water Heater, 240/208 Volts
☐ NONE No Valve Option Selected

Color of Terreon® Bowl (select one)

Standard Colors

- | | | |
|---|---|--|
| <input type="checkbox"/> E-GRAY Empire Gray | <input type="checkbox"/> CHAR Charcoal Gray | <input type="checkbox"/> WHT-SAND White Sand |
| <input type="checkbox"/> BONE Mesa Bone | <input type="checkbox"/> JADE Jade | <input type="checkbox"/> FIESTA Fiesta |
| <input type="checkbox"/> PEP-WHT Peppered White | <input type="checkbox"/> GRAPH Graphite | <input type="checkbox"/> LONDON London Gray |
| <input type="checkbox"/> SAND Sandtrap | <input type="checkbox"/> LANNON Lannonstone | <input type="checkbox"/> O-TAUPE Organic Taupe |
| <input type="checkbox"/> DS-WHT Designer White | <input type="checkbox"/> COBBLE Cobblestone | |

Designer Colors (available at an additional charge; non-cancelable, non-returnable)

- | | | |
|---|---|--|
| <input type="checkbox"/> ARC-CHIP Arctic Chip | <input type="checkbox"/> STAR-D Stardust | <input type="checkbox"/> HILLSIDE Hill Side |
| <input type="checkbox"/> S-SAGE Summer Sage | <input type="checkbox"/> COFFEE Coffee Bean | <input type="checkbox"/> MOUNTAIN Mountain Top |
| <input type="checkbox"/> RIVER Riverstone | <input type="checkbox"/> CORN Cornfield | |
| <input type="checkbox"/> MYSTIC-M Mystic Moss | <input type="checkbox"/> BLUESKY Blue Sky | |

TerreonRE Colors (available at an additional charge; non-cancelable, non-returnable)

- | | | |
|--|---|--|
| <input type="checkbox"/> BIRCH-BARK Birch Bark | <input type="checkbox"/> MAIZE Maize | <input type="checkbox"/> OCEAN-MIST Ocean Mist |
| <input type="checkbox"/> DUSK Dusk | <input type="checkbox"/> MOONDUST Moon Dust | <input type="checkbox"/> OLIVE Olive |
| <input type="checkbox"/> FERN Fern | <input type="checkbox"/> OAT Oat | |

Color of Access Panel (select one)

- ☐ GRAY Gray ☐ PUTTY Putty ☐ COAL Coal

Optional Selections

- P-Trap: ☐ S-CHROME Single Chrome-Plated P-Trap

Verify all rough-in dimensions prior to installation.

Consult local and national codes. Conformity and compliance to local and national codes is the responsibility of the installer.