



## COL-2C, COL-3C, COL-4C, COL-5C 2 – 5-Person Column Showers

- One Set of Supply Connections Required for Five Stations
- Preassembled, Complete with Drain Fitting

### Specifications

#### Materials

All exposed parts are type 304 stainless steel or polished chrome-plated brass. Valve manifold is cast brass. Drain fitting is cast iron and supply inlets are copper tubing.

### Standard Equipment

#### Flow Control

A 1.5 GPM (5.7 LPM) flow control is standard. Actual flow may vary, but will not exceed 2.0 GPM (7.6 LPM) max.

#### Column Shower

Constructed of type 304 stainless steel. Column and column cap are 16 gauge, and base flange is 13 gauge. Access panel located near bottom of column. Each station on column shower equipped with a stainless steel soap tray.

#### Drain Fitting

Cast iron with five stainless steel mounting bolts.

#### Supply Inlets

Constructed of 3/4" type "L" copper tubing.

### Optional Privacy Compartments

#### Partitions

Fabricated of 20 gauge 300 series stainless steel sheets polished to a #4 finish. Sandwich type construction with waterproof cores securely bonded between sheets. Partitions are secured to posts with 14 gauge type 300 stainless steel stirrups and stainless steel screws.

#### Posts

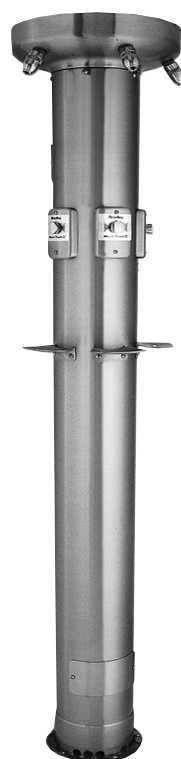
Fabricated 18 gauge 1-1/4" square x 80" stainless steel tubing. Post is secured to floor with an expansion anchor and a concealed foot angle which allows plus or minus 1/2" vertical adjustment.

#### Curtains

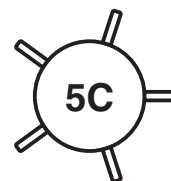
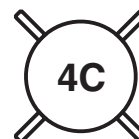
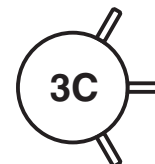
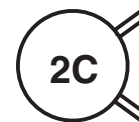
Curtain rails fabricated of 300 series #4 finish stainless steel cylindrical tubing. Curtain hooks are steel wire with a zinc chromate finish. Curtains are 60" W x 74" H and fabricated of heavy gauge translucent vinyl with hemmed edges and aluminum grommet reinforced eyelets.

#### Hardware

All exposed fasteners are vandal-proof stainless steel. Post shoes are anodized aluminum and finished to match stainless steel.



Equa Flo Valve Shown



Showerhead Configurations  
for Models COL-2C – COL-5C



Privacy Compartment



## COL-2C, COL-3C, COL-4C, COL-5C 2 – 5-Person Column Showers

### Standard Selections (Must select one from each category)

#### Model No. (select one)

- ☐ **COL-2C** 2-Person Column Shower\*
- ☐ **COL-3C** 3-Person Column Shower\*
- ☐ **COL-4C** 4-Person Column Shower
- ☐ **COL-5C** 5-Person Column Shower

#### Drain Type (select one)

- ☐ **A** Off-line vent with supplies from below
- ☐ **B** Centrally rising vent with supplies from above
- ☐ **H** Centrally rising vent with supplies from below
- ☐ **O** Off-line vent with supplies from above

#### Showerhead Height (select one)

- ☐ 6'-0" Standard Height
- ☐ 5'-6" Juvenile Height

#### Showerhead Type

- ☐ **S15** Standard Showerhead (Flow Rate = 1.5 GPM/5.7 LPM)
- ☐ **SX15** Severe Service Showerhead (Flow Rate = 1.5 GPM/5.7 LPM)
- ☐ **S20** Standard Showerhead (Flow Rate = 2.0 GPM/7.6 LPM)
- ☐ **SX20** Severe Service Showerhead (Flow Rate = 2.0 GPM/7.6 LPM)
- ☐ **SF** Deluxe Showerhead w/ Ball Joint (Flow Rate = 1.5 GPM/5.7 LPM)
- ☐ **ES** Economy Soft Flow w/ Ball Joint (Flow Rate = 2.0 GPM/7.6 LPM)
- ☐ **J** Multi-Jet Showerhead w/ Ball Joint (Flow Rate = 1.5GPM/5.7 LPM)
- ☐ **LX** Luxury Showerhead w/ Ball Joint (Flow Rate = 1.5GPM/5.7 LPM)
- ☐ **B** Axis Showerhead w/ Ball Joint (Flow Rate = 1.5GPM/5.7 LPM)

#### Valve Type (select one)

##### Hot/Tempered and Cold Supplies

- ☐ **EF** Equa-Flo Pressure Balancing Valve
- ☐ **HD** Equa-Flo HD Pressure Balancing Valve
- ☐ **TMV** Thermostatic Mixing Valve
- ☐ **HC** Hot and Cold Compression Valve\*

##### Single Tempered/Cold Supply

- ☐ **AST** Air Metering Valve
- ☐ **TT** TouchTime® Metering Valve\*\*§

### Optional Selections

#### Volume Control (only available on S15 and S20 showerheads)

- ☐ **AKV** Allen Key Volume Control
- ☐ **LHV** Lever Handle Volume Control

#### Ball Joint (only available on S15 and S20 showerheads)

- ☐ **LBJ** Lockable Ball Joint

#### Drain Variations

- ☐ **CR** Clamping Ring for Flashing
- ☐ **DG** Dome Grate Drain

#### Miscellaneous

- ☐ **ST** Stops in Supplies
- ☐ **SH** Telescoping Shroud - Floor to Ceiling Height: \_\_\_\_\_
- ☐ **FAK** Flange Anchor Kit
- ☐ **LD** Less Column Drain
- ☐ **LS** Less Drain Slots\*

#### Multi-Stall Partitions

- ☐ **MS** Multi-Stall Partitions

#### Multi-Stall Options

- ☐ **HR** Herculite Curtain
- ☐ **RH** Roller Hooks
- ☐ **BH** Robe Hook

\*Non-cancelable, non-returnable

\*\*TT valves require optional 24V Class 2 transformers, available as a separate item from Bradley. PT (S83-134) 24V Plug In Transformer (1/2 amp) Up to 2 showers. 4RT (S45-2045) 24V Remote Transformer (2amp) Up to 4 showers.

Verify all rough-in dimensions prior to installation.

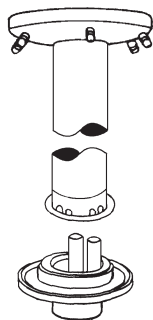
Consult local and national codes: conformity and compliance to local and national codes is the responsibility of the installer.

§ Please visit [www.bradleycorp.com/dc](http://www.bradleycorp.com/dc) for important information regarding a regulatory requirement to convert Bradley's TT activations from AC to DC starting in late 2016.

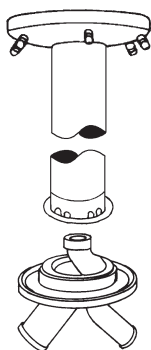
### Drain Variations



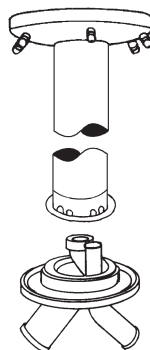
See Document No. 5140 for drain rough-ins and column installation instructions.



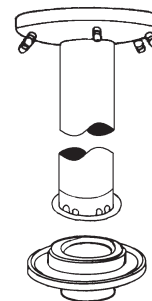
**TYPE A**  
Supplies below.  
Vent off line.



**TYPE B**  
Supplies above.  
Vent through column.



**TYPE H**  
Supplies below.  
Vent through column.



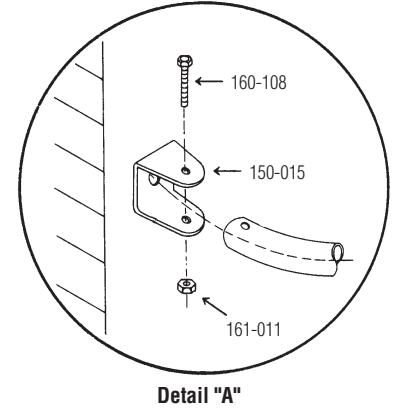
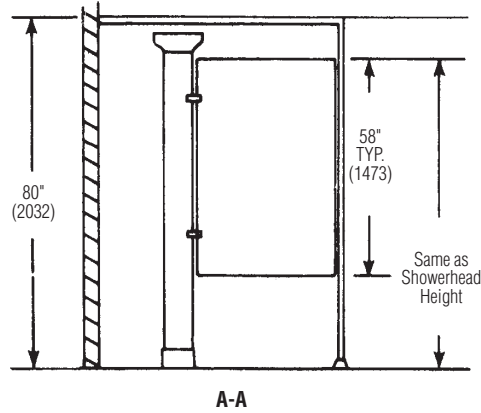
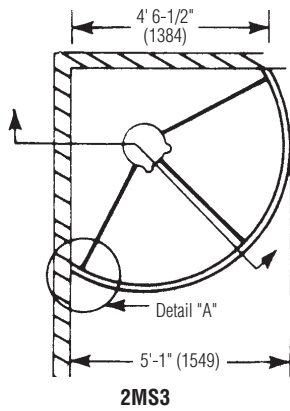
**TYPE O**  
Supplies above.  
Vent off line.



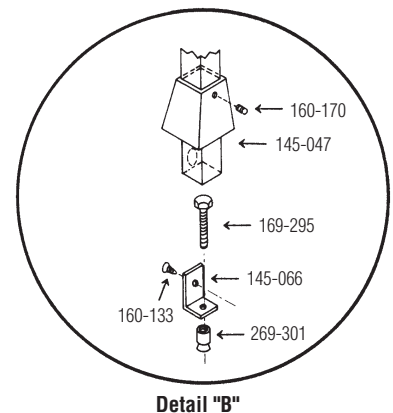
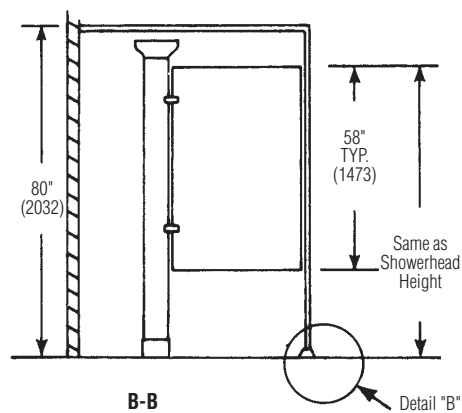
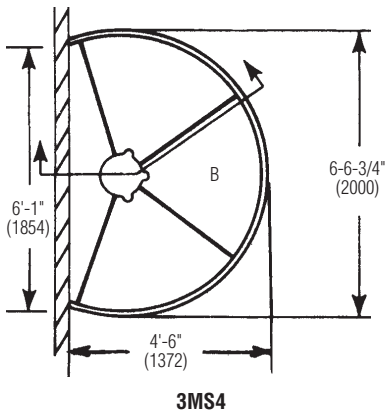
# COL-2C, COL-3C, COL-4C, COL-5C 2 – 5-Person Column Showers

## 2-Person Multi-Stall Dimensions

(mm)



## 3-Person Multi-Stall Dimensions



## 4 – 5-Person Multi-Stall Dimensions

