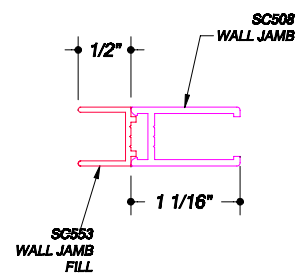
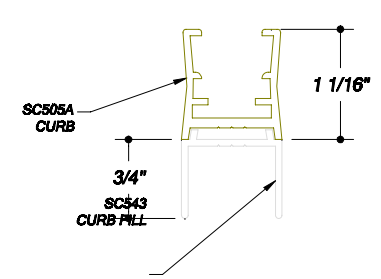
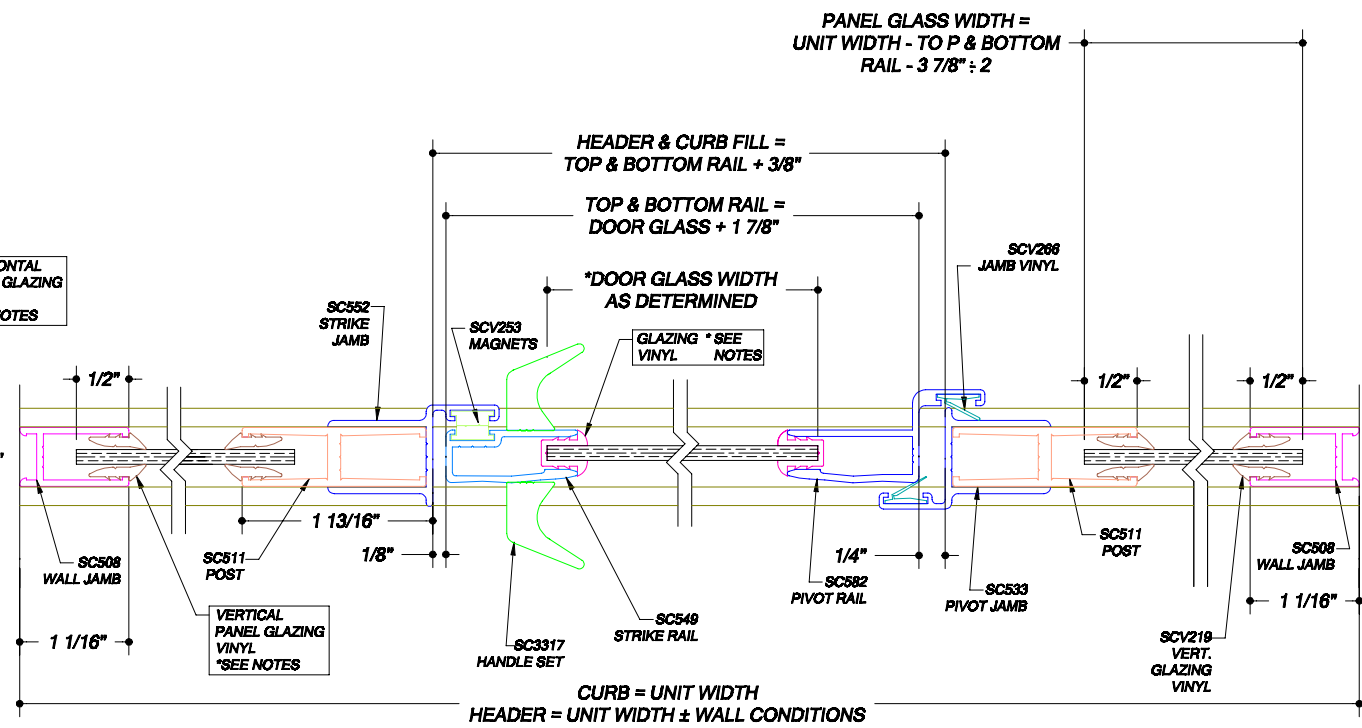


VERTICAL CROSS SECTION



- NOTES**
- GLASS AND OVERLAP OF VERTICAL MEMBERS MAY BE ALTERED TO FACILITATE USE OF STANDARD GLASS SIZES OR FOR OUT PLUMB WALL CONDITIONS.
 - DOOR GLAZING VINYL
3/16" GLASS = SCV82
1/4" GLASS = SCV87
 - PANEL GLAZING VINYL
VERTICAL
3/16" = SCV228
1/4" = SCV219
HORIZONTAL
SCV225
SCV220



HORIZONTAL CROSS SECTION

NOTE: GLAZING MATERIAL FOR ALL KD UNITS AND GLAZED UNITS MUST CONFORM TO ANSI Z97.1 AND CPSC STANDARD 16 CFC 1201 CATEGORY I AND II.

REV. #1
DATE: 9/2/06

SERIES	UNIT	WIDTH & HEIGHT	DOOR GLASS	PANEL GLASS
125 725 FRAMED THINLINE	125S	60" X 65 1/8"	WIDTH AS DETERMINED*	WIDTH AS DETERMINED*
	125	60" X 68 5/8"	HEIGHT= 60"	HEIGHT= 64"
	725	60" X 72 1/8"	HEIGHT= 63 1/2"	HEIGHT= 67 1/2"
			HEIGHT= 67"	HEIGHT= 71"

BASCO
SHOWER ENCLOSURES
7201 Snider Road - Mason, Ohio 45040
Phone (513) 573-1900 Toll Free 1-800-543-1938