

# **GRIFFIN 61" CAST IRON SLIPPER TUB**

Cat. No.  
CTSN60



L: 61- $\frac{1}{4}$ "  
W: 30- $\frac{1}{4}$ "  
H: 21- $\frac{1}{2}$ " & 31" (from floor to top of tub)  
15- $\frac{1}{2}$ " & 23- $\frac{3}{4}$ " (from bottom of tub to top of tub)

**The following is recommended for CTSN60 tubs without deck holes:**

- Faucets: part #4602, 7393 or 7410
- Rigid, freestanding supplies: part #4502
- Leg tub drain: part #5599

Gallon Capacity:	43
Shipping Weight:	500 lbs.
Empty Weight:	300 lbs.
Filled Weight:	679 lbs.

## **Features:**

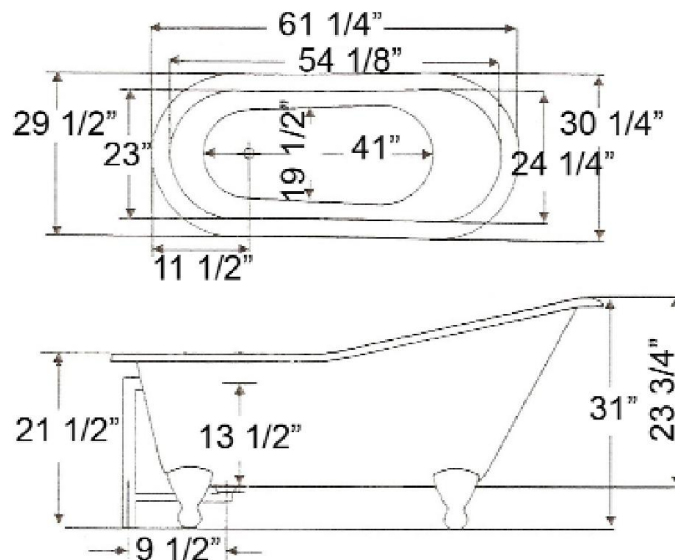
- Inside finish is white enamel
- Cast Iron ball and claw feet
- Tub exterior is white (epoxy)
- No faucet holes with tap deck
- Non-skid strips
- Feet are attached and leveled before shipment



## **Foot Finishes:**

<b>BL</b> Black	<b>ORB</b> Oil-rubbed Bronze
<b>BQ</b> Bisque	<b>PB</b> Polished Brass
<b>CP</b> Polished Chrome	<b>SN</b> Brushed Nickel
<b>PN</b> Polished Nickel	<b>WH</b> White

**Custom Colors Available** (inside of tub is always white enamel):  
Painted bathtubs are considered "special order" and are not returnable  
\$160 Bisque or Black \$250 Designer Color



Dimensions of fixture are nominal and may vary within the range of tolerances established by ANSI Standard A112.19.1M. Dimensions and specifications subject to change without notice.