

**57" GRAYSON  
CAST IRON  
SLIPPER TUB**

Cat. No.  
CTSN57



L: 57- $\frac{3}{8}$ "  
W: 29- $\frac{1}{2}$ "  
H: 22- $\frac{3}{4}$ " - 30" (from floor to top of tub)  
16- $\frac{1}{2}$ " - 23- $\frac{3}{4}$ " (from bottom of tub to top of tub)

Water Depth: 22- $\frac{7}{8}$ " to top of tub  
Water Depth 14" to overflow

Overflow hole: 1 $\frac{1}{2}$ " diameter

**The following is recommended for  
CTSN57 tubs without deck holes:**

- Faucets: part **#4602**
- Rigid, freestanding supplies: part **#4502**
- Leg tub drain: part **#5599**

Gallon Capacity:	35
Shipping Weight:	455 lbs.
Empty Weight:	275 lbs.
Filled Weight:	567 lbs.

**Features:**

- ▶ Inside finish is white enamel
- ▶ Tub exterior is white (epoxy)
- ▶ No faucet holes
- ▶ Pre-drilled overflow hole
- ▶ Cast Iron ball and claw reet available in 6 finishes
- ▶ Tub is thoroughly inspected before shipment

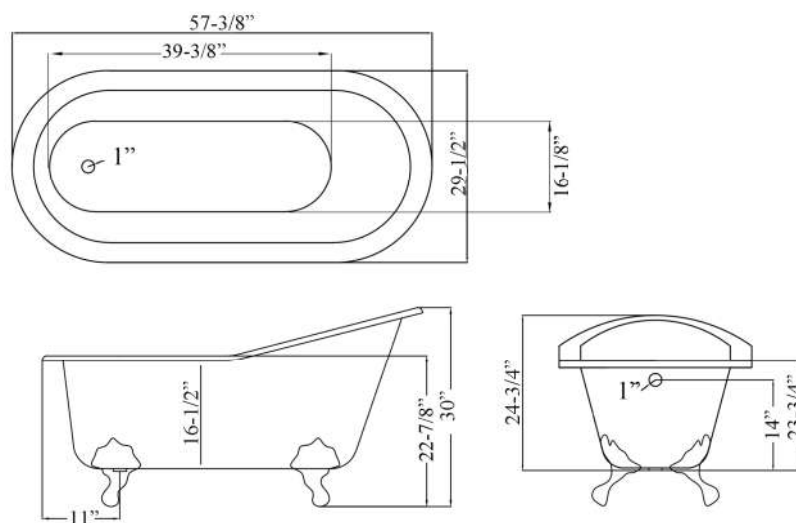
**Foot Finishes:**

**PB** Polished Brass  
**CP** Polished Chrome  
**SN** Brushed Nickel



**WH** White  
**PN** Polished Nickel  
**ORB** Oil-rubbed Bronze

**Custom Colors Available** (inside of tub is always white enamel):  
Painted bathtubs are considered "special order" and are not returnable  
\$160 Bisque or Black \$250 Designer Color



Dimensions of fixture are nominal and may vary within the range of tolerances established by ANSI Standard A112.19.1M. Dimensions and specifications subject to change without notice.