

GRIFFIN 61" CAST IRON SLIPPER TUB

Cat. No.
CTSH60



L: 61- $\frac{1}{4}$ "
W: 30- $\frac{1}{4}$ "
H: 21- $\frac{1}{2}$ " & 31" (from floor to top of tub)
15 - $\frac{1}{2}$ " & 23- $\frac{3}{4}$ " (from bottom of tub
to top of tub)



**The following is recommended for
CTSH60 tubs with deck holes:**

- Rim-mounted faucet: part #4601 or 7529
- Complete shower unit: part# 4063
- Straight bath supplies: part #5577
- Leg tub drain: part #5599

Do not use with rigid, freestanding supplies.

Gallon Capacity:	43
Shipping Weight:	500 lbs.
Empty Weight:	300 lbs.
Filled Weight:	679 lbs.

Features:

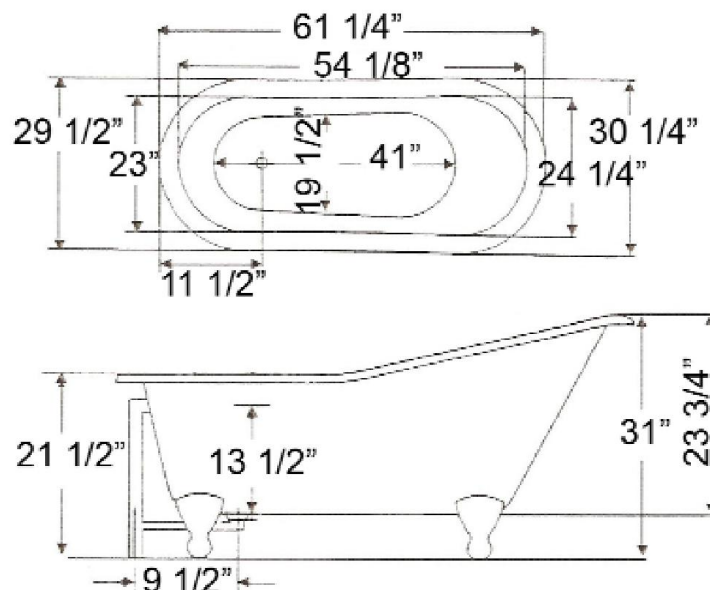
- Inside finish is white enamel
- Cast iron ball and claw
- Tub exterior is white (epoxy)
- 7" centers in tub deck
- Non-skid strips
- Feet attached and leveled before shipment
- Tub is thoroughly inspected before shipment



Foot Finishes:

BL Black	PB Polished Brass
BQ Bisque	ORB Oil-rubbed Bronze
CP Polished Chrome	SN Brushed Nickel
PN Polished Nickel	WH White

Custom Colors Available (inside of tub is always white enamel):
Painted bathtubs are considered "special order" and are not returnable
\$160 Bisque or Black \$250 Designer Color



Dimensions of fixture are nominal and may vary within the range of tolerances established by ANSI Standard A112.19.1M. Dimensions and specifications subject to change without notice.