

**COLUMBUS  
61" CAST IRON  
DOUBLE ROLL  
TOP TUB**

Cat. No.  
CTDRN61



L: 61"  
W: 31 1/2"  
H: 24" (from floor to top of tub)  
18" (from bottom of tub to top of tub)

Depth: 13 1/2" to overflow  
18" at drain

**The following is recommended for CTDRN tubs without faucet holes:**

- Faucets: part #4602
- Rigid, freestanding supplies: part #4502
- Leg tub drain: part #5599

Gallon Capacity: 60  
Shipping Weight: 480 lbs.  
Empty Weight: 300 lbs.  
Filled Weight: 801 lbs.

**Features:**

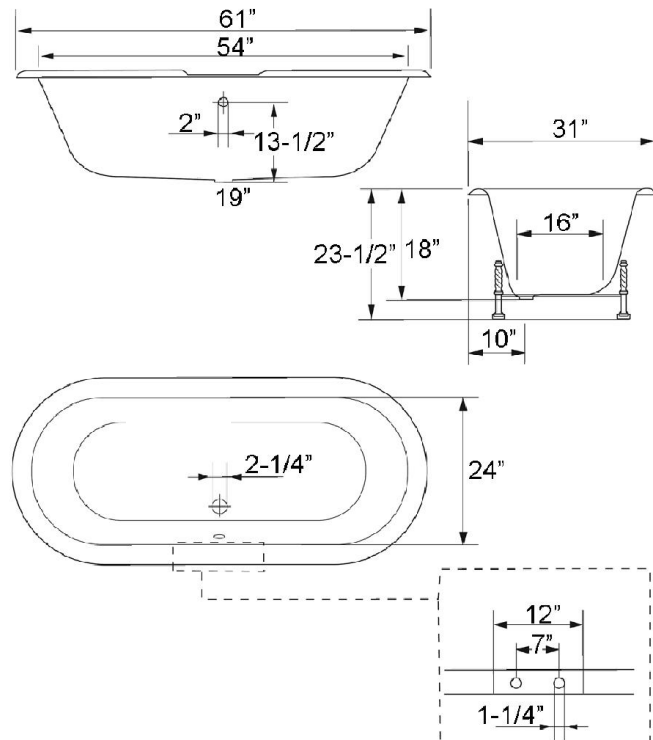
- ▶ Inside finish is white enamel
- ▶ Cast Iron imperial feet available in 8 finishes or unfinished
- ▶ Tub exterior is white (expoxy)
- ▶ No faucet holes
- ▶ Feet are attached and leveled before shipment
- ▶ Tub is thoroughly inspected before shipment



**Foot Finishes:**

- BL Black
- PB Polished Brass
- BQ Bisque
- BN Brushed Nickel
- CP Polished Chrome
- ORB Oil-rubbed Bronze
- PN Polished Nickel
- WH White

**Custom Colors Available** (inside of tub is always white enamel):  
Painted bathtubs are considered "special order" and are not returnable  
\$160 Bisque or Black \$250 Designer Color



Dimensions of fixture are nominal and may vary within the range of tolerances established by ANSI Standard A112.19.2. Dimensions and specifications subject to change without notice.