



<b>JOB:</b>	<b>REPRESENTATIVE:</b>	
<b>UNIT TAG:</b>	<b>ORDER NO.</b>	<b>DATE:</b>
<b>ENGINEER:</b>	<b>SUBMITTED BY:</b>	<b>DATE:</b>
<b>CONTRACTOR:</b>	<b>APPROVED BY:</b>	<b>DATE:</b>



## ASME Compression Tanks

### Air Control

#### DESCRIPTION

The Compression Tank absorbs the expansion forces of the system water and provides proper pressurization under varying operating conditions. Used with Airtrol Fittings it provides positive air control.

#### CONSTRUCTION

These tanks are constructed of carbon steel in accordance with Section VIII, Division I of the ASME Boiler and Pressure Vessel Code - and so stamped.

#### SCHEDULE

PART NUMBER	MODEL NUMBER	CAPACITY GAL (L)	REQUIRED AIRTROL TANK FITTINGS	TAGGING INFORMATION	QUANTITY
116661	15	15 (57)	ATF-12		
116662	24	24 (91)	ATF-12		
116663	30	30 (114)	ATF-12		
116664	40	40 (151)	ATF-12		
116665	60	60 (227)	ATF-16		
116666	80	80 (303)	ATF-20		
116667	100	100 (379)	ATF-20 or ATFL		
116668	120	120 (454)	ATF-24 or ATFL		
116669	135	135 (511)	ATF-24 or ATFL		
116670	175	175 (662)	ATFL		
116671	220	220 (833)	ATFL		
116672	240	240 (908)	ATFL		
116673	305	305 (1,154)	ATFL		
116674	400	400 (1,514)	ATFL		
116675	505	505 (1,912)	ATFL		

#### TYPICAL SPECIFICATION

Furnish and install as shown on plans a \_\_\_\_ gallon ( \_\_\_\_ liter), \_\_\_\_" diameter x \_\_\_\_" long horizontal compression tank with two 1/2" NPT gauge glass tappings in one head and a minimum of two \_\_\_\_" NPT tappings (Select one: 15 thru 135 gallon [57 thru 511 liter] tanks @ 1" or 175 thru 505 gallon [662 thru 1912 liter] tanks @ 1-1/2") in the shell. The tank must be designed, constructed and stamped for \_\_\_\_ psig @ 450° F (232 °C) in accordance with Section VIII, Division I of the ASME Boiler and Pressure Vessel Code, and registered with The National Board of Boiler and Pressure Vessel Inspectors.

#### PERFORMANCE LIMITATIONS

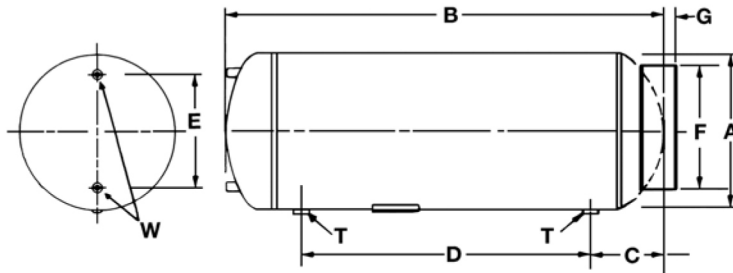
Maximum Design Pressure:  
 Model 15 – 100: 150 psig (1034 kPa)  
 Model 120 – 505: 125 psig (862 kPa)

Maximum Design Temperature:  
 450°F (232°C)

The Compression tank(s) shall be painted with one shop coat of air dry enamel.

A Manufacturers' Data Report for Pressure Vessels, Form U-1 as required by the provisions of the ASME Boiler and Pressure Vessel Code shall be furnished for each compression tank upon request.

Each tank shall be Xylem – Bell & Gossett Model No. \_\_\_\_\_



**DIMENSIONS AND WEIGHTS**

Model Number	DIMENSIONS - INCHES (mm)							TAPPINGS NPT INCHES (mm)	
	A	B	C	D	E	F	G	T	W
15	12 (305)	33 (838)	7 (178)	19 (483)	8 (203)	11.5 (292)	.88 (22)	1 (25)	0.5 (13)
24	12 (305)	51 (1,295)	7 (178)	37 (940)	8 (203)	11.5 (292)	.88 (22)	1 (25)	0.5 (13)
30	14 (356)	48 (1,219)	10 (254)	28 (711)	10 (254)	11.5 (292)	1.13 (29)	1 (25)	0.5 (13)
40	14 (356)	63 (1,600)	10 (254)	43 (1,092)	10 (254)	11.5 (292)	1.13 (29)	1 (25)	0.5 (13)
60	16 (406)	72 (1,829)	10 (254)	52 (1,321)	12 (305)	11.5 (292)	1.13 (29)	1 (25)	0.5 (13)
80	20 (508)	62 (1,575)	10 (254)	42.5 (1,080)	16 (406)	18 (457)	1.5 (38)	1 (25)	0.5 (13)
100	20 (508)	78 (1,981)	10 (254)	58 (1,473)	16 (406)	18 (457)	1.5 (38)	1 (25)	0.5 (13)
120	24 (610)	65 (1,651)	11.13 (283)	42.75 (1,086)	20 (508)	18 (457)	1.5 (38)	1 (25)	0.5 (13)
135	24 (610)	72 (1,829)	11.13 (283)	49.75 (1,264)	20 (508)	18 (457)	1.5 (38)	1 (25)	0.5 (13)
175	30 (762)	62 (1,575)	13.5 (343)	35 (889)	22 (559)	24 (610)	2 (51)	1.5 (38)	0.5 (13)
220	30 (762)	77 (1,956)	13.5 (343)	50 (1,270)	22 (559)	24 (610)	2 (51)	1.5 (38)	0.5 (13)
240	30 (762)	84 (2,134)	13.5 (343)	57 (1,448)	22 (559)	24 (610)	2 (51)	1.5 (38)	0.5 (13)
305	30 (762)	105.75 (2,686)	13.5 (343)	78.75 (2,000)	22 (559)	24 (610)	2 (51)	1.5 (38)	0.5 (13)
400	36 (914)	92.5 (2,362)	14.75 (375)	62 (1,575)	28 (711)	30 (762)	2.5 (64)	1.5 (38)	0.5 (13)
505	36 (914)	120 (3,048)	14.75 (375)	90.5 (2,299)	28 (711)	-	-	1.5 (38)	0.5 (13)

Dimensions are subject to change. Not to be used for construction purposes unless certified.

SIZE	Approximate Shipping Weight LBS. (KG)	Approximate Weight 100% Full LBS. (KG)
15	44 (20)	169 (77)
24	62 (28)	261 (119)
30	72 (33)	321 (146)
40	92 (42)	424 (193)
60	120 (55)	618 (281)
80	136 (62)	800 (364)
100	168 (76)	998 (454)
120	218 (99)	1,214 (552)
135	238 (108)	1,359 (618)
175	338 (154)	1,791 (814)
220	368 (167)	2,194 (997)
240	394 (179)	2,386 (1085)
305	486 (221)	3,018 (1372)
400	645 (293)	3,965 (1802)
505	810 (368)	5,002 (2274)



Xylem Inc.  
 8200 N. Austin Avenue  
 Morton Grove, IL 60053  
 Phone: (847) 966-3700  
 Fax: (847) 965-8379  
[www.xyleminc.com/bellgossett](http://www.xyleminc.com/bellgossett)

Bell & Gossett is a trademark of Xylem Inc. or one of its subsidiaries. © 2020 Xylem Inc. February 2020