

# 80% Oil Furnace

## Upflow-Belt & Direct Drive

### RLUF



### **Features and Benefits**

- ◆ Heavy-duty 14 gauge steel heat exchanger with a long lasting ceramic fiber combustion chamber
- ◆ Easy access large diameter clean out ports in heat exchanger
- ◆ Foil-faced high density fiberglass insulation in cabinet reduces heat loss and noise
- ◆ Cabinet has pre-painted steel for maximum durability
- ◆ External filter and filter rack included
- ◆ Direct drive have slide-out design blower with quick plug-in wiring
- ◆ 4-speed PSC direct drive have dynamically balanced blower with resilient motor mounts for smooth and quiet operation
- ◆ Belt drive models have permanently lubricated split phase blower motor, adjustable pulley and sheave
- ◆ High quality Beckett Flame Retention burner for efficient combustion
- ◆ High efficiency air flow system to provide consistent operation through all operating conditions
- ◆ Honeywell 7184B primary control with 15 second pre-purge, interrupted ignition, limited reset, and LED diagnostics
- ◆ Solid state igniter with 20kW output voltage
- ◆ PSC motor with low amp draw and ball bearings for long life
- ◆ Readily available trade components
- ◆ 40 VA transformer (Direct drive only)
- ◆ Color coded wiring for easy service
- ◆ Transformer and cooling fan relay are factory wired for easy add-on cooling installation (Direct drive only)
- ◆ Includes standard barometric damper
- ◆ Optional sidewall vent kit
- ◆ Lifetime heat exchanger warranty available
- ◆ 10 year limited parts warranty
- ◆ See Limited Warranty documents for details

### **ACCESSORIES**

- ◆ Coil cabinet
- ◆ Combustion air boot
- ◆ Cleanout brush kit
- ◆ Side return air cabinet
- ◆ External filter kit for single side entry over 1600 CFM

# CONCORD

## Physical & Electrical Data

Model	Nozzle Size	Input (Btuh)	Output (Btuh)	AFUE (ICS)	Nom. Cooling Capacity	Flue Dia. (in.)	Filter Size (in.)	Volts/Hz/Phase	Max. Time Delay Breaker or Fuse (amp)	Trans. (V.A.)	Weight (lb.)
RLUF80C57/72D12	.50GPH-80 <sup>a</sup> A	70,000	58,000	83	2.0 - 3.0	6	16 x 25	120/60/1	15	40	225
	.65GPH-80 <sup>b</sup> B	90,000	74,000								
RLUF80C84/95D16	.65GPH-80 <sup>b</sup> B	105,000	85,000	81	2.5 - 4.0	6	16 x 25	120/60/1	15	40	225
	.75GPH-80 <sup>b</sup> B	119,000	97,000								
RLUF80C112/125D20	.85GPH-80 <sup>b</sup> B	140,000	113,000	81	3.0 - 5.0	6	(2) 16 X 25 <sup>2</sup>	120/60/1	15	40	275
	1.00GPH-80 <sup>b</sup> B	154,000	125,000								
RLUF80C57B08	.50GPH-80 <sup>a</sup> A	70,000	57,000	82	2.0 - 2.5 <sup>1</sup>	6	16 x 25	120/60/1	15	12 <sup>3</sup>	230
RLUF80C84/95B10	.65GPH-80 <sup>b</sup> B	105,000	85,000	81	2.0 - 3.5 <sup>1</sup>	6	16 x 25	120/60/1	15	12 <sup>3</sup>	230
	.75GPH-80 <sup>b</sup> B	119,000	97,000								
RLUF80C112/125B16	.85GPH-80 <sup>b</sup> B	140,000	113,000	81	4.0 - 5.0 <sup>1</sup>	6	(2) 16 x 25 <sup>2</sup>	120/60/1	20	12 <sup>3</sup>	280
	1.00GPH-80 <sup>b</sup> B	154,000	125,000								

<sup>1</sup> See Table for Alternate Motors for Cooling Combinations

<sup>2</sup> Requires return air be brought to both side above 1600 CFM

<sup>3</sup> Heating only. Additional transformer required for cooling applications.

Note: Units shipped with filter(s) for side return.

Note: All models are rated at 140 psi pump pressure except the RLUF80C57/72 which is rated at 100 psi

## Blower Performance Data - Direct Drive

Model	Motor Size (hp)	Blower Size	Temp. Rise (°F)	Blower Speed	CFM @ ext. static pressure in. W.C.							
					.20	.30	.40	.50	.60	.70	.80	.90
RLUF80C57/72D12	1/3	10 x 8	50-80	High	1,412	1,356	1,299	1,222	1,154	1,075	988	890
				Med High	1,260	1,217	1,172	1,120	1,060	988	914	797
				Med	1,040	1,025	991	960	910	860	790	680
				Low	887	878	850	830	787	742	680	605
RLUF80C84/95D16	1/2	10 x 10	50-80	High	1,756	1,693	1,940	1,590	1,495	1,361	1,250	1,095
				Med High	1,445	1,425	1,400	1,335	1,287	1,200	1,065	965
				Med	1,191	1,181	1,147	1,110	1,054	985	894	827
				Low	989	979	961	926	880	835	775	690
RLUF80C112/125D20	3/4	12 x 11	45-75	High	2,204	2,140	2,058	2,000	1,900	1,850	1,680	1,560
				Med High	1,760	1,725	1,670	1,615	1,560	1,480	1,390	1,313
				Med	1,520	1,496	1,450	1,400	1,360	1,315	1,250	1,165
				Low	1,366*	1,329*	1,304*	1,250*	1,210*	1,180*	1,120*	1,040*

\*Not recommended for heating. Temperature rise may be outside acceptable range.

## Blower Performance - Belt Drive

Model	Motor Size (hp)	Blower Size	Motor Pulley (in.)	Motor Pulley Adjustment	Blower Pulley (in.)	Belt Size (in.)	Temp. Rise (°F)	CFM @ .20 ext. static pressure in. W.C.
RLUF80C57B08	1/6	10 x 8	3 1/4	1 Turn	7	40	55-85	820
RLUF80C84/95B10	1/4	10 x 8	4	Closed	7	41	55-85 <sup>1</sup> 60-90 <sup>2</sup>	1,170
RLUF80C112/125B16	3/4	12 x 9	4	Closed	7	41	50-80 <sup>1</sup> 60-90 <sup>2</sup>	1,550

<sup>1</sup> Low Fire Nozzle

<sup>2</sup> High Fire Nozzles

## Alternate Motors for Cooling Combinations - Belt Drive

Model	Nominal Cooling Capacity (tons)	Motor Size (hp)	Blower Size	Motor Pulley (in.)	Motor Pulley Adjustment	Blower Pulley (in.)	Belt Size (in.)	CFM @ ext. static pressure - in. W.C.			
								.20	.30	.40	.50
RLUF80C57B08	2.0 - 2.5	1/4	10 x 8	4	Closed	7	41	1,170	1,154	1,070	975
RLUF80C84/95B10	2.0 - 3.5	1/2	10 x 8	4	Closed	6	39	1,550	1,495	1,430	1,370
RLUF80C112/125B16	4.0 - 5.0	3/4	12 x 9	3 1/4	Closed	5	36	1,990	1,925	1,850	1,820

Note: Field converted with different size motor for cooling applications.

## Accessories

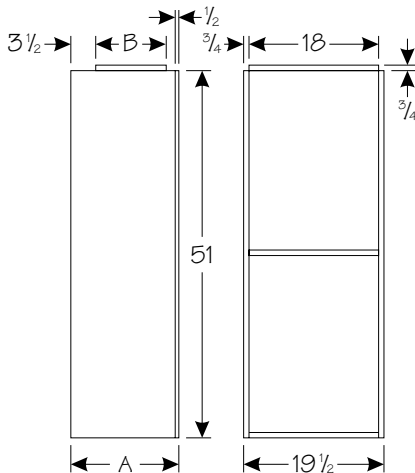
Description	Used with	Kit Number
Clean Out Kit	All models	ABRSH380-3
Tjerlund Side Wall Vent Kit <sup>1</sup>	All models	ASVNT522
Field Controls Side Wall Vent Kit <sup>2</sup>	All models	ASVNT523
Evaporator Coil Cabinet	LUF57/72/84/95 to U2E24NB, U2E30NB, U2E36NB, U2E46NB	AAOILKDC19
Evaporator Coil Cabinet	LUF84/95 to U2E58C & LUF112/125 to U2E36C, U2E46C, U2E58C	AAOILKDC22
Evaporator Coil Cabinet	LUF112/125 TO U2E60D	AAOILKDC27
External Filter Rack	All LUF models.	AFILTHA7-2
Side Return Air Cabinet	LUF57/84/95	ARCABHA-8
Side Return Air Cabinet	LUF112/125	ARCABHA-9
Combustion Air Kit	All models	ABOOT571
Clean Out Cap Kit	All models	ACAP570

<sup>1</sup> This can be ordered from Tjerlund, part number SSII.

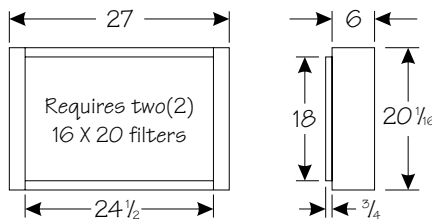
<sup>2</sup> This can be ordered from Field Controls, part number SWG-5-CK61.

## Side Return Air Cabinet

Model	A	B
ARCABHA-8	15	10
ARCABHA-9	21	16

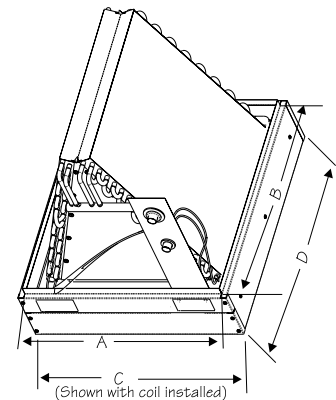


## External Filter Rack



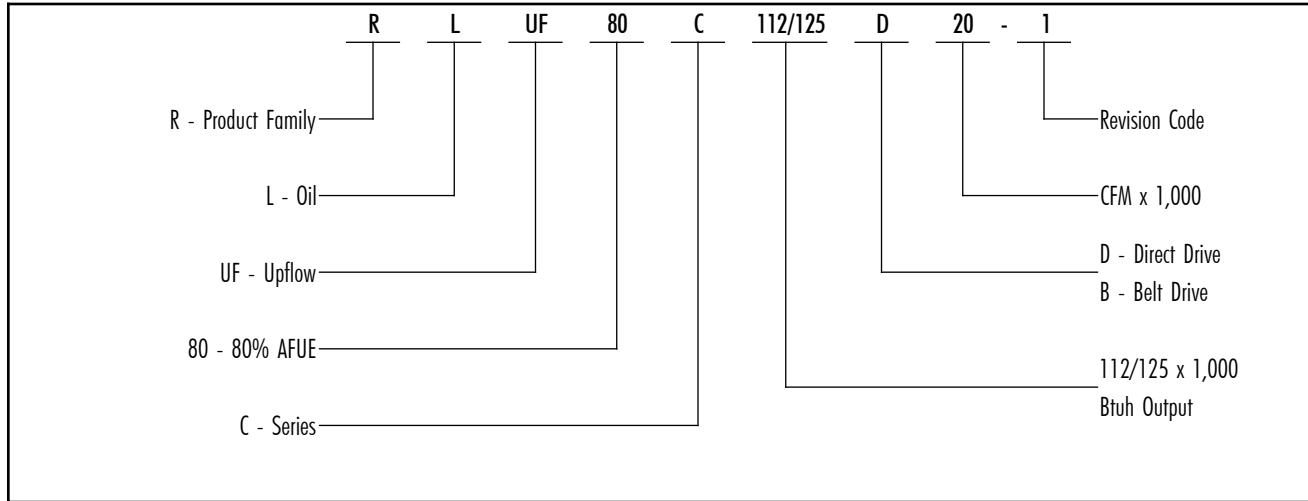
## Evaporator Coil Cabinet

Model No.	Plenum		Cabinet	
	A	B	C	D
AROILKDC19	18 1/2	21 1/8	19 1/2	22 1/8
AROILKDC22	21 1/2	22 1/4	22 1/2	23 1/4
AROILKDC27	25	24 5/8	26	25 5/8



(Note: Some coils only have right side drain.)

## Model Number Guide



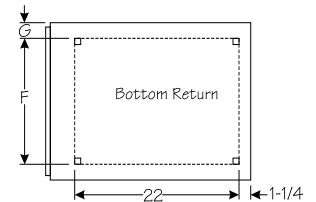
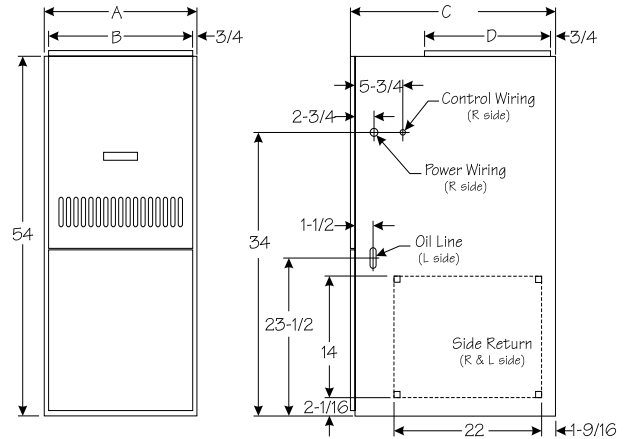
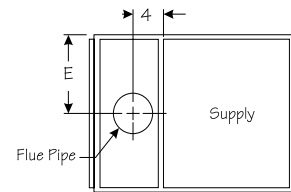
## Dimensions (in.)

Model	A	B	C	D	E
RLUF80C57/72	19 1/2	18	30 5/8	19 5/8	9 3/4
RLUF80C84/95					
RLUF80C112/125	22 1/2	21	33 1/8	22 1/8	11 1/4

## Clearances (in.)

Model Number	Front*	Sides	Rear
RLUF80C57/72	4	0	0
RLUF80C84/95			
RLUF80C112/125			

\*For service requirements normally 24".



# CONCORD™

Quality heating and cooling products

www.concord-air.com

1-800-448-5872

All specifications and illustrations subject to change without notice and without incurring obligations.