



Meridian® 2141-3 Series Siphon Jet Toilet - Floor Outlet



2141-W-3-RM *

Fixture May Show Some Available Options

Please visit www.acorneng.com for most current specifications.

Siphon Jet Toilet - Floor Outlet

Meridian® Toilet contoured housings feature an attractive, satin finish and are optionally available with a High Polish Finish (-HP) for an exceptional, elegant appearance. The standard toilet bowl has a matte finish on the inside. Mounting is available for front or rear installations. All units include punching for an elongated hinged seat. (-HS Hinged Seat is optionally available.) Housing includes access panel on each side for installation of fixture and hinged seat.

Toilet is a Siphon Jet Floor Outlet type with an elongated bowl manufactured to ASME A112.19.3-2008 and CSA B45.4-2008 requirements and will flush with a minimum of 25 PSI flow pressure when used in conjunction with a minimum of 1.28 GPF. Trap has a minimum 3-1/2" seal, will pass a 2-1/8" ball and is fully enclosed. Waste outlet connection is a 7-1/2" diameter recessed gasket flange.

Flush Valve supply is available for exposed or concealed flush valve styles with 1-1/2" NPT connection.

Front Mount (-FM) units include a fixture-to-wall mounting plate with exposed vandal-resistant fasteners. Mounting plate is mounted directly to reinforced wall or to an optional -MC Mounting Carrier (6" bolt center).

Rear Mount (-RM) units include integral 1/2" UNC anchor tapping and mounting hardware. Unit requires an accessible pipe chase for installation.

GUIDE SPECIFICATION

Acorn Meridian® Siphon Jet Floor Outlet Toilet, On-Floor (specify model number and options). Fixture to be heavy gage type 304 stainless steel. Exposed surfaces shall be polished to a satin finish. Housing to include side access panels and punching for hinged seat. Toilet shall meet ASME A112.19.3-2008 and CSA B45.4-2008 requirements and will flush with a minimum of 25 PSI flow pressure when used in conjunction with a minimum of 1.28 GPF. Toilet trap shall have a minimum 3-1/2" seal that shall pass a 2-1/8" diameter ball and be fully enclosed.

* Patent applied for

Meridian®: 2141-3 Siphon Jet Toilet-Floor Outlet



WALL THICKNESS AND TYPE (Must Specify)

Thickness: _____ Type: ☐ Concrete ☐ Block ☐ Steel

MODEL NUMBER AND OPTIONS SELECTION:

BASE MODEL NUMBER

☒ 2141 Siphon Jet Toilet

SUPPLY SELECTION (Must Specify)

☐ -T Top (Exposed)
☐ -W Wall (Concealed)

FIXTURE MOUNTING & WASTE (Must Specify)

☒ -3 On-Floor, Floor Outlet

INSTALLATION (Must Specify)

☐ -FM Front Mount
☐ -RM Rear Mount

FLUSH VALVE GPFs (Must Specify)

☐ -1.28 GPF (HET)
☐ -1.6 GPF (Not Available in California)
☐ -3.5 GPF (Not Available in California)

FLUSH VALVE OPTIONS (Must Specify)

REFER TO ACORN DURA-WARE ACCESSORIES FOR FLUSH VALVE COVER #2802, BOX #2803-1 AND PANEL #2898

☐ -FV Flush Valve, Mechanical (N/A for ADA)
☐ -FVBO Flush Valve by Other
☐ -FVH Flush Valve, Hydraulic (N/A for Top Supply)
☐ -FVL Flush Valve, ADA Lever Handle
☐ -MVCFV Time-Trol Flush Valve (N/A for Top Supply)

TOILET SEAT OPTIONS

☐ -HS-OFCL Hinged Seat, Open Front Less Cover
☐ -HS-OFWC Hinged Seat w/ Cover
☐ -LPFS Less Punch for Hinged Seat

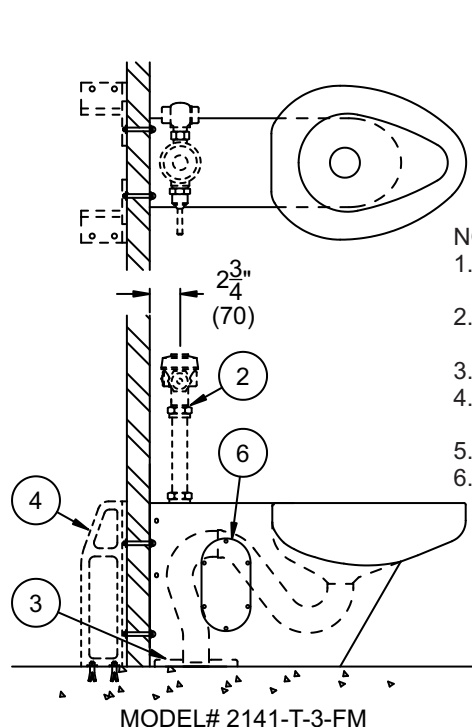
TOILET OPTIONS

☐ -FVT Flush Thru Wall Connector
☐ -GW Gasket Waste (Standard on-FM but Optional on -RM)

PRODUCT OPTIONS

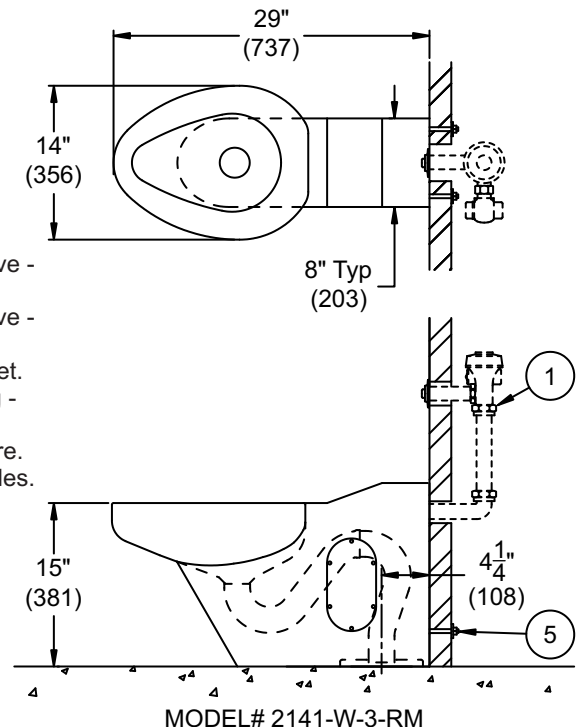
☐ -ADA 18" Integral Seat Height
☐ -BL Bedpan Lugs
☐ -EG Enviro-Glaze Color Specify: _____
☐ -EGE Enviro-Glaze Color Specify: _____
☐ -EGE Toilet Exterior Only
☐ -FG 14 Gage Housing
☐ -HP High Polish Finish (Exterior Only)
☐ -MC Mounting Carrier (6" Bolt Centers) (-FM Models Only)
☐ -MT Metal Template
☐ -SW Wall Sleeve (-RM Models Only)
☐ -TF Transformer, 120VAC to 24VAC (-MVCFV option)

Please visit www.acorneng.com for most current specifications.



NOTES:

1. Optional -FV Flush Valve - Wall Supply.
2. Optional -FV Flush Valve - Top Supply.
3. Toilet Floor Waste Outlet.
4. Optional -MC Mounting - Carrier.
5. Wall Mounting Hardware.
6. Access Panel. Both Sides.



<p>Important: Installation instructions and current rough-in are furnished with each fixture. Do not rough in without certified dimensions. Dimensions are subject to manufacturer's tolerance of plus or minus 1/4" and change without notice. Acorn assumes no responsibility for use of void or superseded data. © Copyright 2009 Acorn Engineering Company</p>	
<p>Selection Summary</p> <p>Model No. & Option _____</p> <p>Quantity _____</p>	<p>Approved for Manufacturing</p> <p>Company _____ Title _____</p> <p>Signature _____ Date _____</p>