



AquaSense® AV ZER Series

Automatic Sensor-Operated,
Battery-Powered Flushometer

Installation, Operation, Maintenance,
and Parts Manual

Patented and Patents Pending



**ZER6000AV-CP
ZER6000AV-CPM**



**ZER6003AV-CP
ZER6003AV-CPM**

**Sensor-Operated, Battery-Powered
Closet/Urinal Systems**

- ZER6000AV-CPM**
- ZER6000AV-WS1-CPM**
- ZER6001AV-CPM**
- ZER6001AV-WS1-CPM**
- ZER6003AV-CPM**
- ZER6003AV-WS1-CPM**

LIMITED WARRANTY

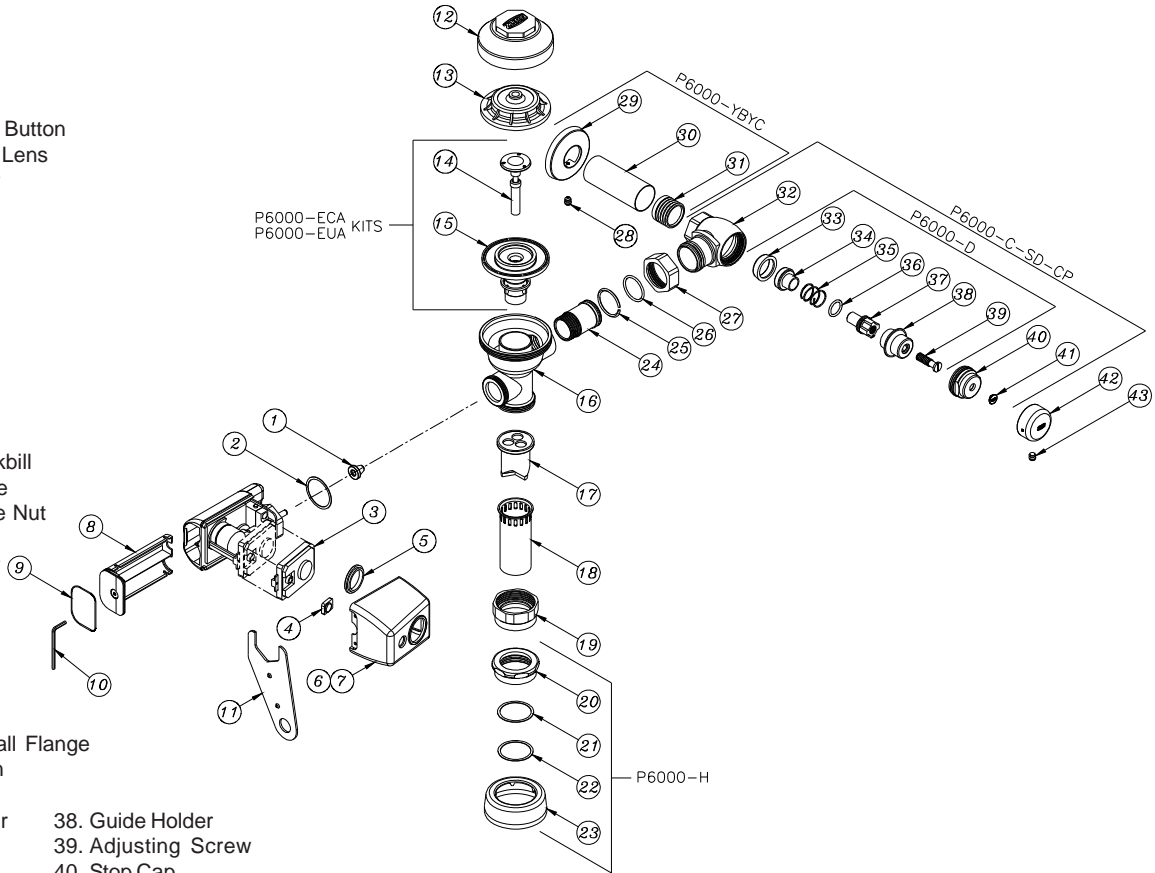
All goods sold hereunder are warranted to be free from defects in material and factory workmanship for a period of three years from the date of purchase. Decorative finishes warranted for one year. We will replace at no costs goods that prove defective provided we are notified in writing of such defect and the goods are returned to us prepaid at Sanford, NC, with evidence that they have been properly maintained and used in accordance with instructions. We shall not be responsible for any labor charges or any loss, injury or damages whatsoever, including incidental or consequential damages. The sole and exclusive remedy shall be limited to the replacement of the defective goods. Before installation and use, the purchaser shall determine the suitability of the product for his intended use and the purchaser assumes all risk and liability whatever in connection therewith. Where permitted by law, the implied warranty of merchantability is expressly excluded. If the products sold hereunder are "consumer products," the implied warranty of merchantability is limited to a period of three years and shall be limited solely to the replacement of the defective goods. All weights stated in our catalogs and lists are approximate and are not guaranteed.



AquaVantage® Exposed E-Z Flush Repair Kits

Part Identification

1. Seal
2. Collar Gasket
3. Sensor Module
4. Manual Override Push Button
5. Replacement Sensor Lens
6. Chrome Plastic Cover
7. Chrome Metal Cover
8. Battery Drawer
9. O-Ring
10. Allen Wrench
11. Handle Nut Wrench
12. Valve Body Cover
13. Plastic Cover
14. Trip Mechanism
15. Diaphragm Repair Kit
16. Valve Body
17. Vacuum Breaker Duckbill
18. Vacuum Breaker Tube
19. Vacuum Breaker Tube Nut
20. Spud Nut
21. Spud Friction Washer
22. Spud Sleeve
23. Spud Escutcheon
24. Tailpiece
25. Snap Ring
26. Tailpiece O-Ring
27. Locking Nut
28. Setscrew for Cast Wall Flange
29. Cast Wall Escutcheon
30. Supply Cover Tube
31. Sweat Solder Adapter
32. Stop Body
33. Piston Seal
34. Piston
35. Stop Spring
36. Guide O-Ring
37. Piston Guide
38. Guide Holder
39. Adjusting Screw
40. Stop Cap
41. Snap Cap Screw Cover
42. Vandal - Resistant Control Stop Cover
43. Setscrew for Control Stop Cover



| Covers and Repair Kits | Product No. |
|---|---------------|
| Outside Cover - CP - Item 10 | P6000-LL-CP |
| Inside Cover - Item 11 | P6000-L |
| Low Consumption Closet Kit - 1.28 gal. flush | P6000-ECA-HET |
| Low Consumption Closet Kit - 1.6 gal. flush | P6000-ECA-WS1 |
| Water Saving Closet Kit - 3.5 gal. flush | P6000-ECA-WS |
| Full Flow Closet Kit - 4.5 gal. flush | P6000-ECA-FF |
| Ultra Low Flush Urinal Kit - 0.125 gal. flush | P6000-EUA-ULF |
| Extra Water Saver Urinal Kit - 0.5 gal. flush | P6000-EUA-EWS |
| Low Consumption Urinal Kit - 1.0 gal. flush | P6000-EUA-WS1 |
| Water Saving Urinal Kit - 1.5 gal. flush | P6000-EUA-WS |
| Full Flush Urinal Kit - 3.0 gal. flush | P6000-EUA-FF |

| Repair Parts - Inside Parts | Product No. |
|-------------------------------|-------------|
| Urinal Relief Valve - Item 12 | P6000-EU13 |
| Closet Relief Valve - Item 12 | P6000-EC13 |

| Flush Connections and Spud Coupling Kits | Product No. |
|--|-------------|
| Flush Tube Assembly for Flush Valves Includes Items 15-19, Specify Diameter and Length | P6000-A |
| Vacuum Breaker Repair Kit, Item 17 | P6000-B |
| Spud Coupling Assembly Includes Items 20-23 Specify Size. | P6000-H |

| Control Stop Repair Kit and Parts | Product No. |
|---|-------------|
| Control Stop Repair Kit for 1" and 3/4", Includes Items 33-39 | P6000-D-SD |
| Seal Seat for 1" and 3/4", Includes Item 33 | P6000-D42 |
| VP Control Stop Repair Kit for 1" and 3/4", Includes Items 33-39 | P6000-D-VP |
| Sweat Solder Connection with Cast Wall Flange, Includes Items 29-31 | P6000-YBYC |

| Adjustable Tailpieces | Product No. |
|--|-------------|
| Adjustable Tailpiece for Standard Flush Valve Includes Items 24-26 | P6000-J1 |
| Tailpiece Coupling Assembly Includes Items 25-27 | P6000-K |
| Tailpiece Locking Ring Includes Item 25 | P6000-C30 |
| Tailpiece O-Ring Includes Items 26 | P6000-C31 |
| Coupling Nut Includes Item 27 | P6000-C32 |

| Handle Assembly and Repair Kits | Product No. |
|---|------------------|
| Chrome Plastic Cover, Item 6 | PERK6000-L-CPCR |
| Chrome Metal Cover, Item 7 | PERK6000-L-CPMCR |
| Replacement Sensor Lens Item 5 | PERK6000-SCR |
| Battery Drawer, Item 8 | PERK6000-BD |
| Repair Kit Includes Items 1, 2, 4, and 9 | PERK6000-RK |
| Repair Kit Includes Items 1, 2, Retainer and Cup Seal | PERK6000-MRK |
| Sensor Module | PERK6000-SR |

ZURN INDUSTRIES, LLC. ♦ COMMERCIAL BRASS OPERATION ♦ 5900 ELWIN BUCHANAN DRIVE ♦ SANFORD NC 27330

PHONE: 1-800-997-3876 ♦ FAX: 919-775-3541 ♦ WORLD WIDE WEB: WWW.ZURN.COM

IN CANADA: ZURN INDUSTRIES LIMITED ♦ 3544 NASHUA DRIVE ♦ MISSISSAUGA, ONTARIO L4V1L2 ♦ PHONE: 905-405-8272 FAX: 905-405-1292