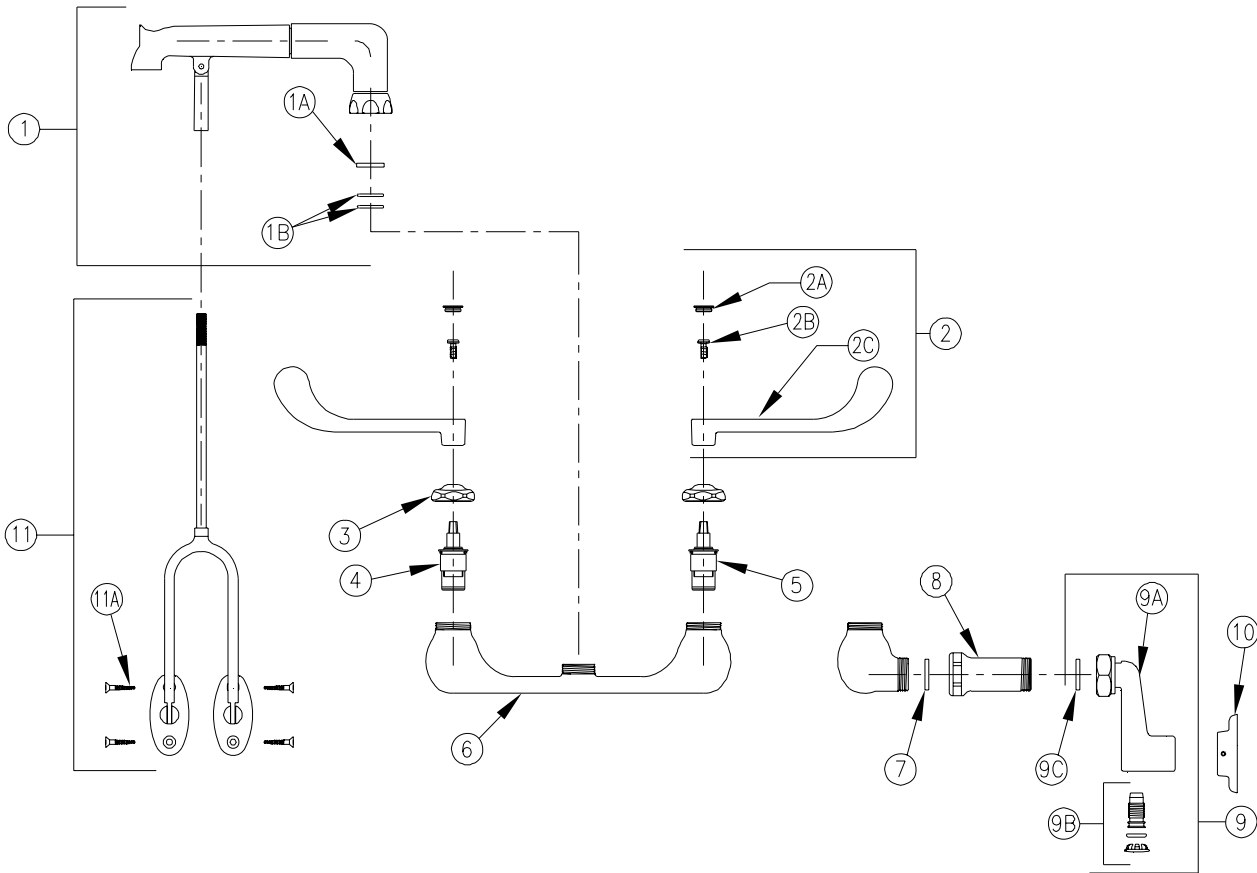


CLINICAL SERVICE SINK FAUCET



Z842D6-LSI-LVB-PE-2XT Parts List



Item	Part Number	Description	Qty.
1	G61922	7-1/2" Cast 'D' Spout Assembly	1
1A	59436001	Spacer Washer	1
1B	58155018	O-Rings	2
2	G60508	6" [152mm] Vandal-Resistant Metal Wrist Blade Handles	1
2A	G60500	Hot/Cold Color-Coded Indexes	1
	59454001	Hot Index	1
	59454002	Cold Index	1
2B	62464001	10-32 screw	2
2C	59453002	6" [152mm] Wrist Blade Handle	2
3	559440001	Handle Nut	2
4	59517002	Short Hot Cartridge	1
5	59517001	Short Cold Cartridge	1
6	59463001	Sink Body	1
7	59748001	Gasket	2
8	61625001	Extension	2
9	G60528	Long Supply Arm and Integral Stop Assembly	2
9A	60810003	Long Supply Arm	1
9B	G60527	Screwdriver Integral Stop Assembly	1
	59536001	Integral Stop	1
	58155013	O-Ring	1
	59667001	Hole Plug	1
9C	59748001	Gasket	1
10	G65300	3/4" Wall Escutcheon	2
11	G61924	Short Split Wall Bracket/Rod Assy.	1
11A	62388001	#10 Flat Head WD. Screw 1 1/2" [38mm] Long	4

ZURN INDUSTRIES, LLC ♦ COMMERCIAL BRASS OPERATION ♦ 2640 SOUTH WORK STREET ♦ FALCONER NY 14733

Phone: 1-716-665-1132 ♦ Fax: 1-716-665-1135 ♦ World Wide Web: www.zurn.com

In Canada: ZURN INDUSTRIES LIMITED ♦ 3544 Nashua Drive ♦ Mississauga, Ontario L4V1L2 ♦ Phone: 905/405-8272 Fax: 905/405-1292