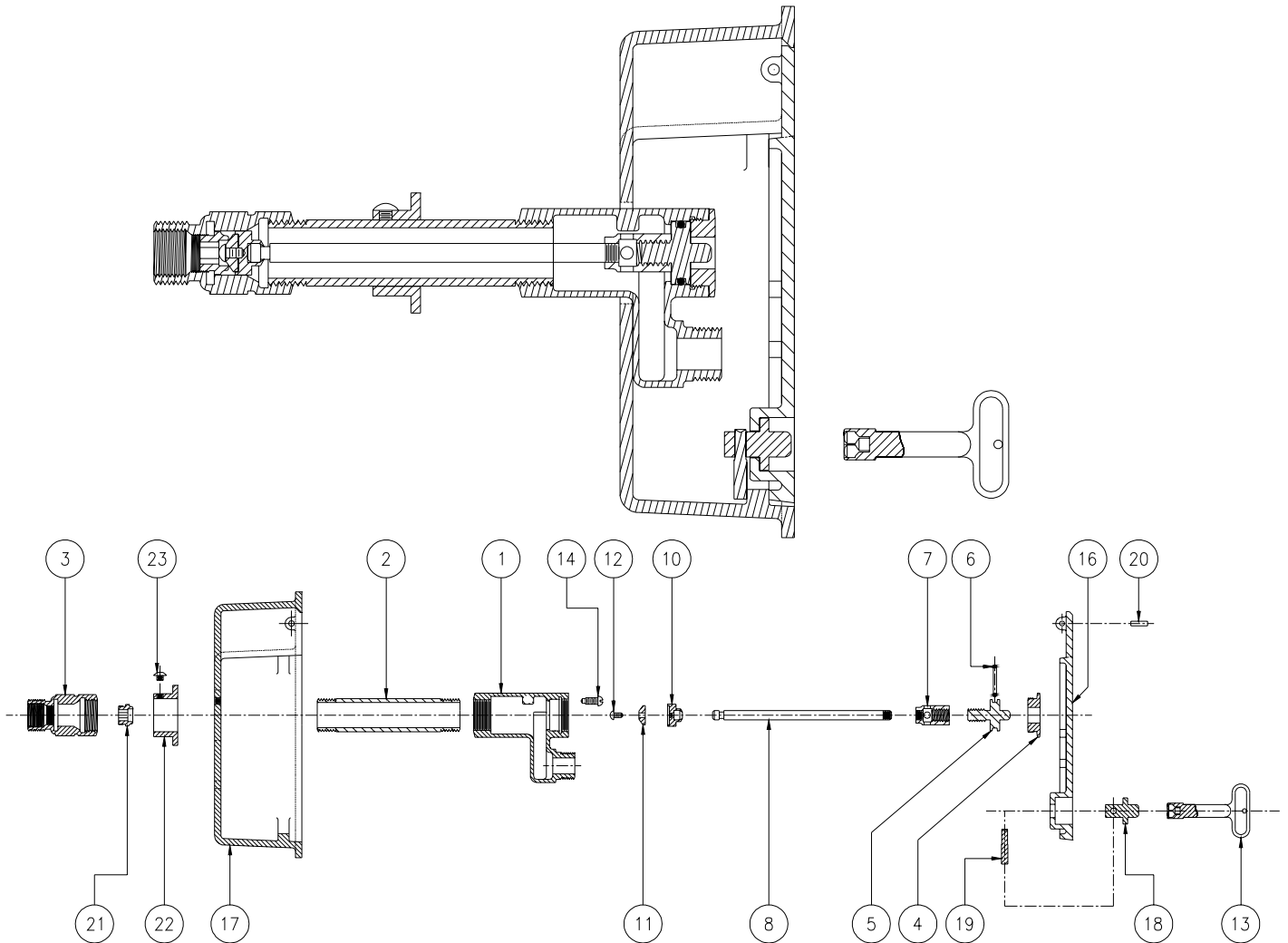




# Z1325 WALL HYDRANT ASSEMBLY



LIST OF MATERIAL			
IT.	QTY	PART NO.	DESCRIPTION
1	1	38949-001	HEAD
2	2	50270-XXX	CASING
3	2	31258-001	VALVE HOUSING
4	2	22156-002	FACE NUT
*	5	25049-001	OPERATING SCREW
*	6	23750-028	O-RING
*	7	25147-001	OPERATING COUPLING
8	2	45042-XXX	OPERATING ROD
10	2	25050-001	WASHER GUIDE
*	11	23075-001	WASHER
*	12	14853-042	SCREW #10-24 N.C.

LIST OF MATERIAL			
IT.	QTY	PART NO.	DESCRIPTION
*	13	59546-001	KEY
14	1	14853-072	SCREW #10-24 N.C.
16	1	25511-001	HYDRANT COVER
17	1	25512-003	HYDRANT BODY
18	1	25514-002	LOCKING PIN MOUNTING
19	1	25513-001	LOCKING PIN
20	2	45553-010	HINGE PIN
*	21	25262-001	REMOVABLE SEAT
22	2	50268-001	WALL CLAMP (OPT)
23	2	26050-004	WALL CLAMP SCREW (OPT)

\* ITEMS ARE AVAILABLE IN -RK REPAIR KIT OPTION BAG #66955-203-9.

<b>Form #</b> H22	<b>Date:</b> 11/13/03	<b>C.N. No.</b> 91649	<b>Rev.</b> A
-------------------	-----------------------	-----------------------	---------------