

# MODEL 975XL

## Reduced Pressure Principle Backflow Preventers 1/4" to 1/2"

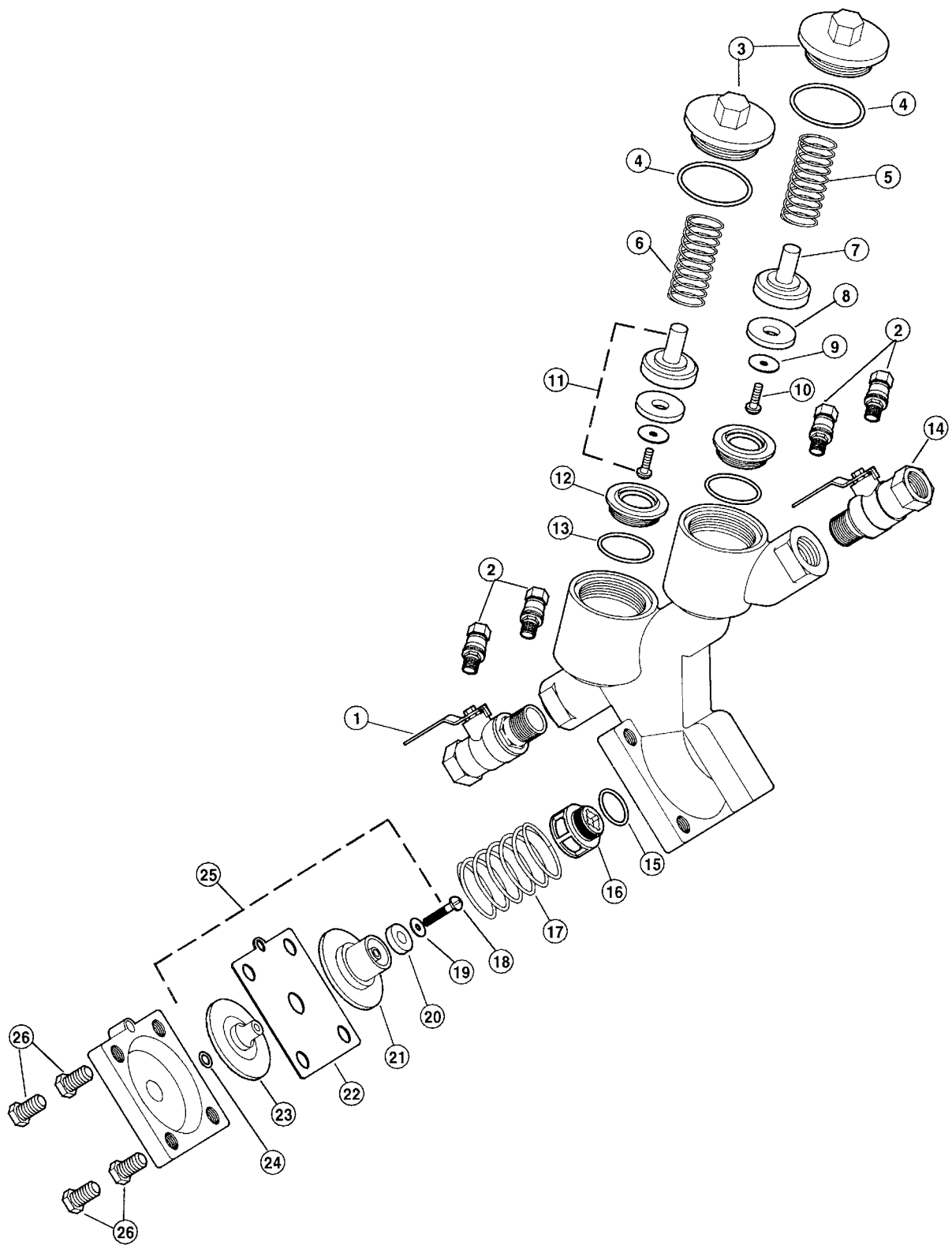
# WILKINS

A **ZURN**™ Company

ITEM NO.	DESCRIPTION	1/4"	3/8"	1/2"
1	BALL VALVE, TAPPED	14-850TM	38-850TM	12-850TM
2	TEST COCK	18-860	18-860	18-860
3	CHECK COVER	971-3-010F	971-3-010F	971-3-010F
4	O-RING, COVER	123N	123N	123N
5	NO. 2 CHECK SPRING	951-33	951-33	951-33
6	NO. 1 CHECK SPRING	971-33	971-33	971-33
7	POPPET	951-30	951-30	951-30
8	SEAL RING	951-12S	951-12S	951-12S
9	SEAL RING RETAINER	951-14	951-14	951-14
10	RETAINING BOLT	951-11	951-11	951-11
11	POPPET ASSEMBLY	951-300S	951-300S	951-300S
12	CHECK SEAT	951-18	951-18	951-18
13	O-RING, CHECK SEAT	020N	020N	020N
14	BALL VALVE	14-850M	38-850M	12-850M
15	O-RING, RELIEF VALVE SEAT	016N	016N	016N
16	RELIEF VALVE SEAT	971-18	971-18	971-18
17	RELIEF VALVE SPRING	971A-33	971A-33	971A-33
18	RELIEF VALVE RETAINING BOLT	971-11	971-11	971-11
19	RELIEF VALVE SEAL RING RETAINER	971-14	971-14	971-14
20	RELIEF VALVE SEAL RING	971-12S	971-12S	971-12S
21	RELIEF VALVE LOWER PLUNGER	971-34A	971-34A	971-34A
22	RELIEF VALVE DIAPHRAGM	971-43	971-43	971-43
23	RELIEF VALVE UPPER PLUNGER	971-34	971-34	971-24
24	O-RING, RELIEF VALVE STEM	011N	011N	011N
25	RELIEF VALVE STEM ASSY.	971-50S	971-50S	971-50S
26	RELIEF VALVE COVER BOLTS	971-11A	971-11A	971-11A
	RV. & CHECK SEAT TOOL	971-SEATTOOL		

### REPAIR KITS

NO. RK14-975XL			REPAIR KIT COMPLETE Model 975XL 1/4", 3/8" & 1/2" Only			NO. RK14-975XLR			RUBBER REPAIR KIT Model 975XL 1/4", 3/8", 1/2" Only		
PART NO.	QTY.	DESCRIPTION	PART NO.	QTY.	DESCRIPTION	PART NO.	QTY.	DESCRIPTION	PART NO.	QTY.	DESCRIPTION
951-12S	2	SEAL RING	951-12S	2	SEAL RING						
971-12S	1	RELIEF VALVE SEAL RING	971-12S	1	RELIEF VALVE SEAL RING						
971-43	1	DIAPHRAGM	971-43	1	DIAPHRAGM						
123N	2	O-RING, COVER	123N	2	O-RING, COVER						
011N	1	O-RING, RELIEF VALVE STEM	011N	1	O-RING, RELIEF VALVE STEM						
971-33	1	NO. 1 CHECK SPRING									
951-33	1	NO. 2 CHECK SPRING									
971A-33	1	RELIEF VALVE SPRING									



# MODEL 975XL

## Reduced Pressure Principle Backflow Preventers 3/4" to 2"

# WILKINS

A **ZURN**™ Company

ITEM NO.	DESCRIPTION	3/4"	1"	1-1/4"	1-1/2"	2"
1	BALL VALVE, TAPPED	34-850T	1-850T	114-850T	112-850T	2-850T
2	BALL VALVE	34-850	1-850	114-850	112-850	2-850
3	O-RING, CHECK SEAT	125N	125N	142N	142N	142N
4	CHECK SEAT	952-18S	952-18S	954-18S	954-18S	954-18S
5	RETAINING BOLT	952-11	952-11	952-11	952-11	952-11
6	SEAL RING RETAINER	952-14	952-14	954-14	954-14	954-14
7	SEAL RING	952-12S	952-12S	954-12S	954-12S	954-12S
8	POPPET	952-30	952-30	954-30	954-30	954-30
9	NO. 1 CHECK SPRING	972-33	972-33	5754-33	5754-33	5754-33
10	O-RING, COVER	136N	136N	153N	153N	153N
11	CHECK COVER	952-3-010F	952-3-010F	954-3-010F	954-3-010F	954-3-010F
12	POPPEY ASSY.	952-300S	952-300S	954-300S	954-300S	954-300S
13	NO. 2 CHECK SPRING	952-33	952-33	554-33	554-33	554-33
14	TEST COCK	18-860	18-860	14-860	14-860	14-860
15	O-RING, RELIEF VALVE SEAT	019N	019N	029N	029N	029N
16	RELIEF VALVE SEAT	972-18	972-18	974-18	974-18	974-18
17	RELIEF VALVE SPRING	972A-33	972A-33	974A-33	974A-33	974A-33
18	RELIEF VALVE RETAINING BOLT	972-11A	972-11A	604B-11	604B-11	604B-11
19	RELIEF VALVE SEAL RING RETAINER	972-14	972-14	552-14	552-14	552-14
20	RELIEF VALVE SEAL RING	972-12S	972-12S	974-12S	974-12S	974-12S
21	RELIEF VALVE LOWER PLUNGER	972-34A	972-34A	974-34A	974-34A	974-34A
22	RELIEF VALVE DIAPHRAGM	972-43	972-43	974-43	974-43	974-43
23	RELIEF VALVE UPPER PLUNGER	972-34	972-34	974-34	974-34	974-34
24	O-RING, RELIEF VALVE STEM	111N	111N	121N	121N	121N
25	RELIEF VALVE STEM ASSY.	972-50S	972-50S	974-50S	974-50S	974-50S
26	RELIEF VALVE COVER BOLT	554-11A	554-11A	554-11A	554-11A	554-11A
	RV. & CHECK SEAT TOOL	972-SEATTOOL		974-SEATTOOL		

### REPAIR KITS

NO. RK34-975XL			REPAIR KIT COMPLETE Model 975XL 3/4" & 1" Only			NO. RK114-975XL			REPAIR KIT COMPLETE Model 975XL 1-1/4", 1-1/2", 2" Only		
PART NO.	QTY.	DESCRIPTION	PART NO.	QTY.	DESCRIPTION	PART NO.	QTY.	DESCRIPTION	PART NO.	QTY.	DESCRIPTION
952-12S	2	SEAL RING	954-12S	2	SEAL RING						
972-12S	1	RELIEF VALVE SEAL RING	974-12S	1	RELIEF VALVE SEAL RING						
972-43	1	DIAPHRAGM	974-43	1	DIAPHRAGM						
136N	2	O-RING, COVER	153N	2	O-RING, COVER						
111N	1	O-RING, RELIEF VALVE STEM	121N	1	O-RING, RELIEF VALVE STEM						
972-33	1	NO. 1. CHECK SPRING	5754-33	1	NO. 1. CHECK SPRING						
952-33	1	NO. 2 CHECK SPRING	554-33	1	NO. 2 CHECK SPRING						
972A-33	1	RELIEF VALVE SPRING	974A-33	1	RELIEF VALVE SPRING						
NO. RK34-975XLR			RUBBER REPAIR KIT Model 975XL 3/4" & 1" Only			NO. RK114-975XLR			RUBBER REPAIR KIT Model 975XL 1-1/4", 1-1/2", 2" Only		
PART NO.	QTY.	DESCRIPTION	PART NO.	QTY.	DESCRIPTION	PART NO.	QTY.	DESCRIPTION	PART NO.	QTY.	DESCRIPTION
952-12S	2	SEAL RING	954-12S	2	SEAL RING						
972-12S	1	RELIEF VALVE SEAL RING	974-12S	1	RELIEF VALVE SEAL RING						
972-43	1	DIAPHRAGM	974-43	1	DIAPHRAGM						
136N	2	O-RING, COVER	153N	2	O-RING, COVER						
111N	1	O-RING, RELIEF VALVE STEM	121N	1	O-RING, RELIEF VALVE STEM						

