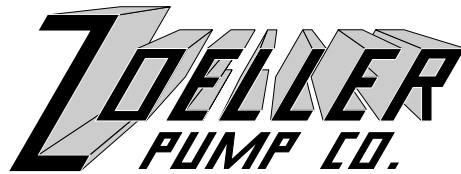


"QUALITY PUMPS SINCE 1939"

Product information presented here reflects conditions at time of publication. Consult factory regarding discrepancies or inconsistencies.



SECTION 6.10.230

FM0434

1099

Supersedes

0296

MAIL TO: P.O. BOX 16347 • Louisville, KY 40256-0347
 SHIP TO: 3649 Cane Run Road • Louisville, KY 40211-1961
 (502) 778-2731 • 1 (800) 928-PUMP • FAX (502) 774-3624

REPLACEMENT PARTS LIST FOR MODELS:

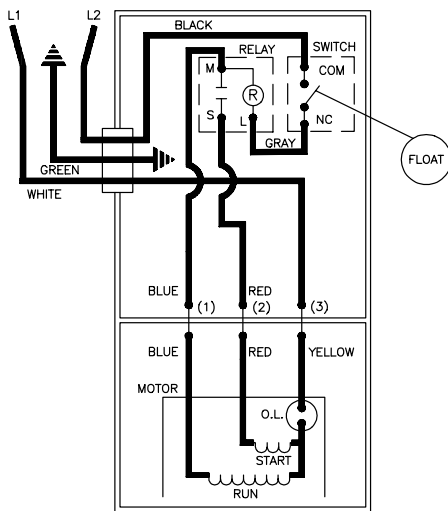
M139 AUTOMATIC 115V
D139 AUTOMATIC 230V
N139 NON-AUTOMATIC 115V
E139 NON-AUTOMATIC 230V

Consult factory for all other models

TO ORDER REPLACEMENT PARTS:

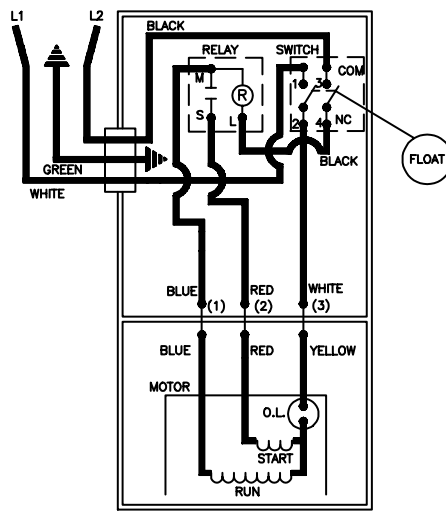
PLEASE FURNISH THE FOLLOWING INFORMATION:

- Model Number.
- Part Number of Pump.
(If manufactured prior to June 1988, give 2 letter date code following Model No.)
- Part Number and Description of part.



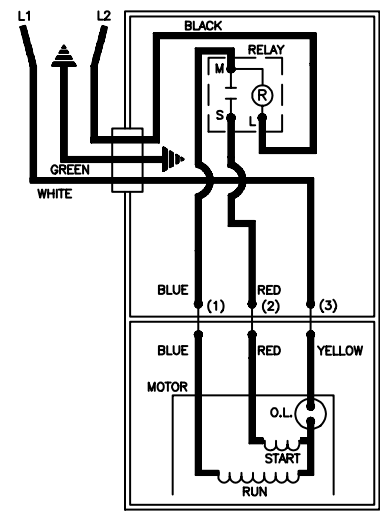
002389A

WIRING DIAGRAM FOR
MODELS
"M139-A"
"D139-A"
2/81 (NM) thru 8/86 (US)



004620

WIRING DIAGRAM FOR
MODELS
"M139-B"
"D139-B"
9/86 (VS) thru Present



002395A

WIRING DIAGRAM FOR MODELS
"N139-A" and "N139-B"
"E139-A" and "E139-B"
2/81 (NM) thru Present

REPLACEMENT PARTS LIST FOR MODELS "M139" and "D139". See back page for "M139" and "D139" illustration.

REF. NO.	DESCRIPTION	MODELS:				D139-A	D139-B
		M139-A	M139-B				
		QTY	NOTES	2/81 NM thru 8/86 US	9/86 VS thru Current	2/81 NM thru 8/86 US	9/86 VS thru Current
1	• Handle	1		267032	267032	267032	267032
2	Case-Mach "137/267/268"	1	3	001517	004611	001517	004611
3	• Gasket, Case/Cover	1		267007	267007	267007	267007
4	Relay Asm	1		002474	002474	267050	147135
5	• Wire Pkg (2)Wires	1		267014	267014	267014	267014
6	• Seal,Thru Wall Term	3		003402	003402	003402	003402
7	• Plug,Test-White	2		034090	034090	034090	034090
8	• Clamp,Strain Relief-Red	1		001770	001770	001770	001770
9	Cord Term & Seal Asm 10'	1	3	267033	094071	267034	094072
10	• Seal,Cord-Asm & Strain Relief	1		094032	094032	094032	094032
11	Bearing,Upper Rotor	1		NA	NA	NA	NA
12	• Guard	1		267008	267008	267008	267008
13	Float-Polypropylene	1		034019	034019	034019	034019
14	• Arm & Seal Asm "130/260"	1	3	267018	004741	267018	004741
15	Case & Switch Asm "130/260"	1	3	139043	004742	139043	004742
16	Switch Asm "130/260"	1	3	267015	004740	267015	004740
17	Lead Wire (Gray)	1		002227	NA	002227	NA
18	• Rod,Float	1		001526	001526	001526	001526
19	• Housing,Mtr-&Str GE	1	1,2	002477	002477	002478	002478
		1	1,2	005535	005535	005536	005536
20	• Rotor Asm 115/230V/1Ph GE	1	2	267005	267005	267005	267005
21	• Rotor Asm 115/230V/1Ph EMD	1	2	004021	004021	004021	004021
		1	2	267006	267006	267006	267006
22	• Seal,Mtr Hsg	1		267006	267006	267006	267006
23	• Washer, Trst-Nyl. 875X.504X.050"	1		002140	002140	002140	002140
24	Bearing,Sleeve-Lower Rotor	1		NA	NA	NA	NA
25	Housing,Pump-Mach	1		139018	139018	139018	139018
26	• Oil,Dielectric (24.5 Oz Can)	1		267056	267056	267056	267056
27	Guide Asm,Flt Rod	1		094048	004676	094048	004676
28	• Seal Asm,Shaft-Blister Pak	1		267027	267027	267027	267027
29	Impeller "137"	1		139006	139006	139006	139006
30	Base & Plate Asm	1		139002	139002	139002	139002
31	Strainer Plate	1		137008	137008	137008	137008
32	• Screw, .25-20 X .75 HHm-SS	13		001916	001916	001916	001916
33	• Screw,#6-32x.438Rhstlp"1"Stlzi	2		001877	004644	001877	004644
34	• Screw,#10-24 X.375 RHM-SI SS	3		001883	001883	001883	001883
35	• Sem,10-24x.375HH-SI Tc.688Wash	2		002000	002000	002000	002000
36	• Screw,#6-32x.25RHM SI Tc Stlgr	3		001877	001877	001877	001877
37	Rebuild Kit "130/260"	1		267059	004743	267059	004743

• Items included in Rebuild Kit. □ Not shown in illustration.

NOTES:

- 1) Mtr. Hsg., Brg., Stator & Term. (Item 18) are preassembled at the factory and must be replaced as a unit. Stator is permanently attached to the Motor Housing. Plug (Item 7); Seal, Thru Wall Term. (Item 6) and Bearing - Upper (Item 11) are replaceable.
- 2) When ordering Motor Housing, Bearing, Stator and Term. (Item 18) or Rotor (Item 16) specify either GE or Emerson motor. GE or Emerson motor. GE motor can be identified by (4) half oval slots spaced at 90° around the outside diameter or the stator. Emerson motor can be identified by (2) half oval slots or holes spaced 180° around the outside diameter of the stator.
- 3) If an "X" follows Model No., or Date Mfg. on brass ID tag, consult factory for ordering any parts.
- 4) See FM0160 Parts Price Sheet for listing of parts prices.
- 5) "NA" indicates, not applicable.

DATE CODE OF MANUFACTURE FROM 12/70 TO 12/88					
1st LETTER MONTH			2nd LETTER YEAR		
M -- JAN.	T -- JULY	A -- 1971	G -- 1977	O -- 1983	
N -- FEB.	U -- AUG.	B -- 1972	H -- 1978	P -- 1984	
O -- MARCH	V -- SEPT.	C -- 1973	I -- 1979	R -- 1985	
P -- APRIL	W -- OCT.	D -- 1974	J -- 1980	S -- 1986	
R -- MAY	X -- NOV.	E -- 1975	M -- 1981	T -- 1987	
S -- JUNE	Y -- DEC.	F -- 1976	N -- 1982	U -- 1988	

NOTE: Four digit (MMYY) date of mfg. used after June, 1988.
IE: MMYY = 0192 = Jan. 1992

REPLACEMENT PARTS LIST FOR MODELS "N139" and "E139". See back page for "N139" and "E139" illustration.

REF. NO.	DESCRIPTION	QTY	NOTES	MODELS:													E139-A		E139-B	
				N139-A	N139-B												2/81 NM thru 8/86 US	9/86 VS thru Current	2/81 NM thru 8/86 US	9/86 VS thru Current
1	• Handle	1		267032	267032												267032	267032		
2	• Cover & Handle Asm	1		002599	002599												002599	002599		
3	• Cover-Mach	1		001519	001519												001519	001519		
4	• Gasket, Case/Cover	1		267007	267007												267007	267007		
5	• Relay Asm	1		002474	002474												267050	147135		
6	• Wire Pkg (2)Wires	1		267014	267014												267014	267014		
7	• Seal,Thru Wall Term	3		003402	003402												003402	003402		
8	• Plug, Test-White	2		034090	034090												034090	034090		
9	• Clamp,Strain Relief-Red	1		001770	001770												001770	001770		
10	• Cord Term & Seal 15'	1	3	003617	003617												003618	003618		
11	• Seal,Cord-Asm & Strain Relief	1		094032	094032												094032	094032		
12	• Bearing,Upper Rotor	1		NA	NA												NA	NA		
13	• Retainer, Hdl-Na	1		267053	267053												267053	267053		
14	• Housing,Mtr-&Str GE	1	1,2	002477	002477												002478	002478		
15	• Housing,Mtr- & Str EMD	1	1,2	005535	005535												005536	005536		
16	• Oil,Dielectric (24.5 Oz Can)	1		267056	267056												267056	267056		
17	• Rotor Asm 115/230V/1Ph GE	1	2	267005	267005												267005	267005		
18	• Rotor Asm 115/230V/1Ph EMD	1	2	004021	004021												004021	004021		
19	• Seal,Mtr Hsg	1		267006	267006												267006	267006		
20	• Washer,Trst-Nyl.875X.504X.050"	1		002140	002140												002140	002140		
21	• Bearing,Sleeve-Lower Rotor	1		NA	NA												NA	NA		
22	• Housing,Pump-Mach	1		139018	139018												139018	139018		
23	• Seal Asm,Shaft-Blister Pak	1		267027	267027												267027	267027		
24	• Impeller "137"	1		139006	139006												139006	139006		
25	• Base & Plate Asm	1		139002	139002												139002	139002		
26	• Strainer Plate	1		137008	137008												137008	137008		
27	• Screw,#6-32X.25RHM SI Tc Stlgr	2		001877	001877												001877	001877		
28	• Screw,#25-20 X .75 HHm-SS	13		001916	001916												001916	001916		
29	• Screw,#10-24 x .375 RHM-SI SS	3		001883	001883												001883	001883		
30	• Sem,10-24x.375HH-SI Tc.688Wash	2		002000	002000												002000	002000		
31	• Rebuild Kit "130/260"	1		267059	004743												267059	004743		

• Items included in Rebuild Kit. ✖ Not shown in illustration.

NOTES:

- 1) Mtr. Hsg., Brg., Stator & Term. (Item 14) are preassembled at the factory and must be replaced as a unit. Stator is permanently attached to the Motor Housing. Plug (Item 8); Seal, Thru Wall Term. (Item 7) and Bearing - Upper (Item 12) are replaceable.
- 2) When ordering Motor Housing, Bearing, Stator and Term. (Item 14) or Rotor (Item 16) specify either GE or Emerson motor. GE or Emerson motor. GE motor can be identified by (4) half oval slots spaced at 90° around the outside diameter of the stator. Emerson motor can be identified by (2) half oval slots or holes spaced 180° around the outside diameter of the stator.
- 3) If an "X" follows Model No., or Date Mfg. on brass ID tag, consult factory for ordering any parts.
- 4) See FM0160 Parts Price Sheet for listing of parts prices.
- 5) "NA" indicates, not applicable.

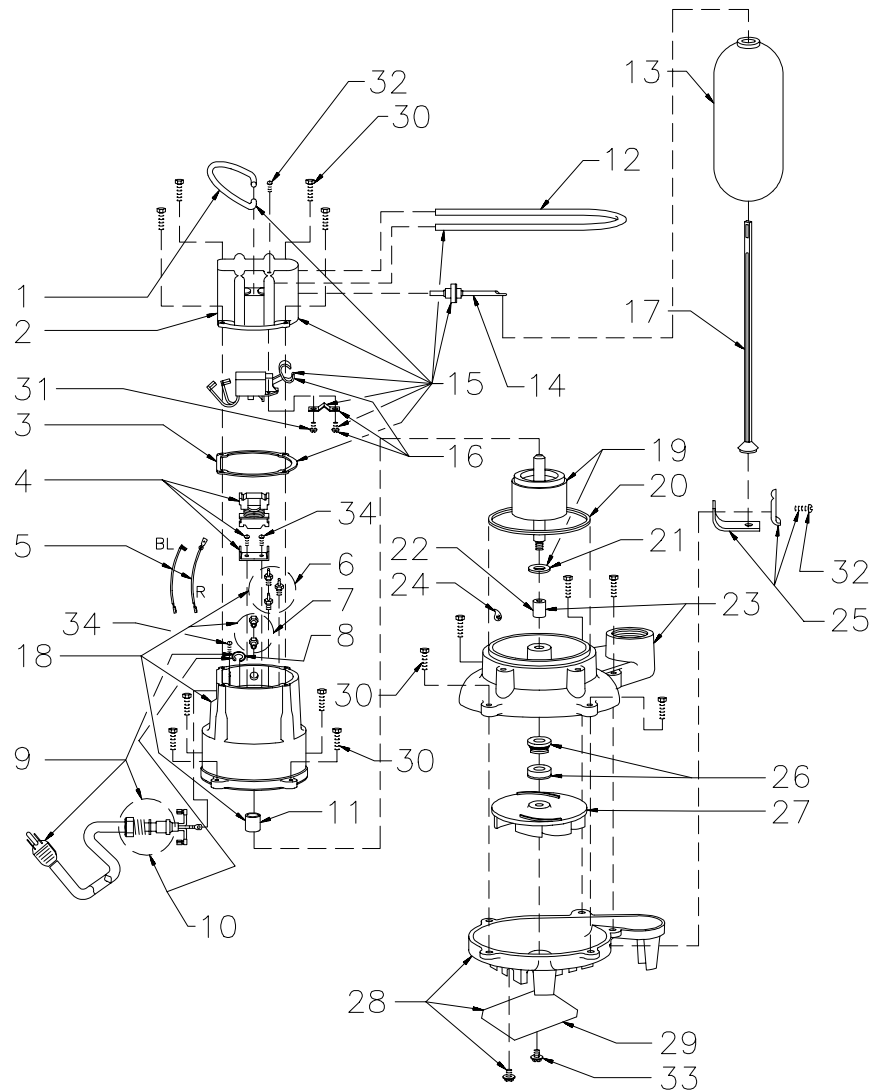


MAIL TO: P.O. BOX 16347
 Louisville, KY 40256-0347
 SHIP TO: 3649 Cane Run Road
 Louisville, KY 40211-1961
 (502) 778-2731 • 1 (800) 928-PUMP
 FAX (502) 774-3624

Manufacturers of . . .

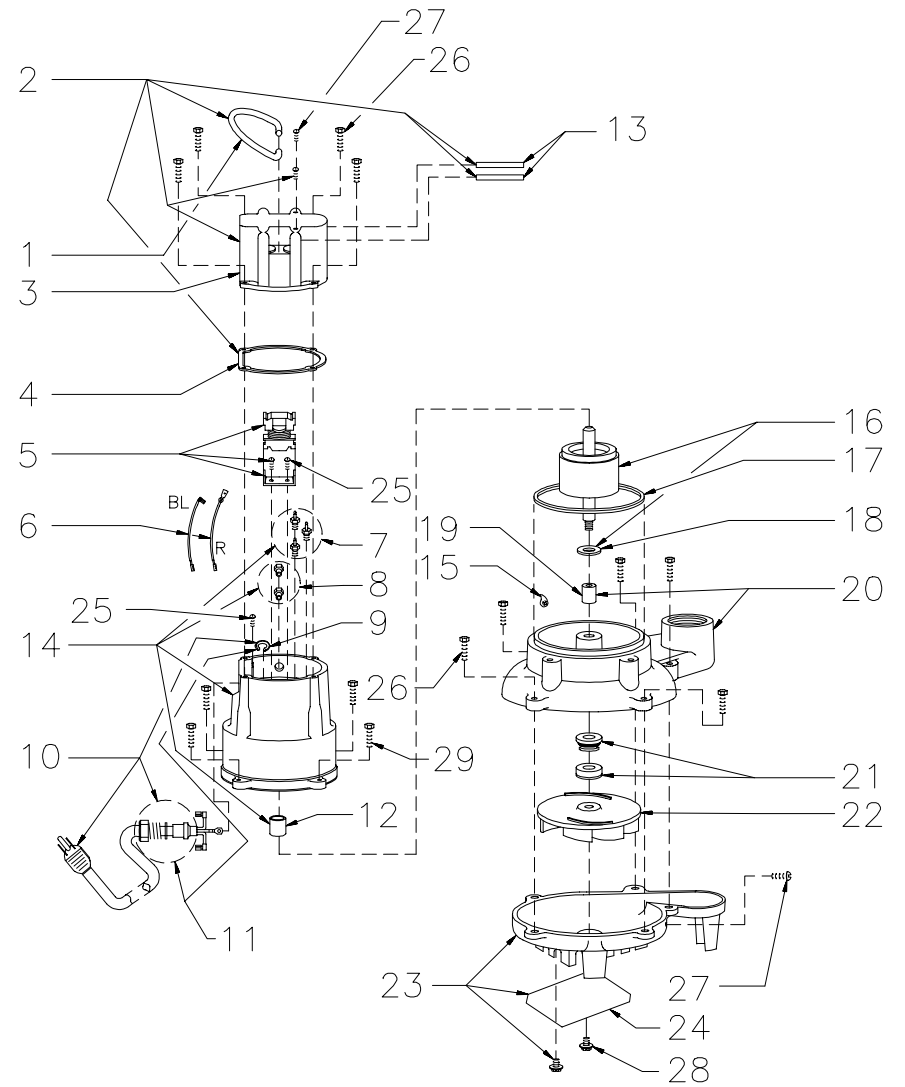
"QUALITY PUMPS SINCE 1939"

REPLACEMENT PARTS ILLUSTRATION FOR MODELS "M139" AND "D139"



SKA264

REPLACEMENT PARTS ILLUSTRATION FOR MODELS "N139" AND "E139"



SKA913