



The Woodford Model 27 drains as handle is shut off even if hose is attached. This faucet is designed for residential outside water service applications and intended for irrigation purposes.

**SPECIFICATIONS:**  
**MODEL 50HA BACKFLOW PREVENTER -**  
*Patent Pending*

- ASSE 1052 Approved
- Listed by IAPMO
- Field Testable
- Two Independent Check Valves
- Drains automatically when hose is removed
- No spray back



**FEATURES:**

**EXTERIOR FINISH** - Brass

**VALVE** - Molded nitrile suitable for hot water.

**NOZZLE** - 3/4" male hose thread.

**NO LEAD SOLDER** - All solder joints.

**PLUNGER** - Hemispherical cushion type.

**STEM SCREW** - DELRIN®

**HEAD NUT** - Brass

**HANDLE** - Metal. (Optional Tee Key)

**INLETS** - As shown.

**MAX PRESSURE** - 125 p.s.i.

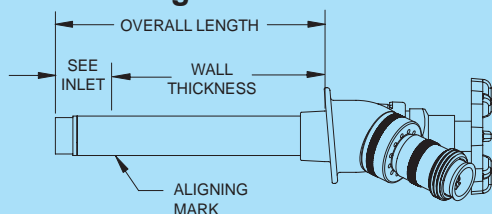
**MAX TEMPERATURE** - 120° F

# Backflow Protected Automatic Draining Freezeless Wall Faucet Model 27



**NOTICE** - To close and drain, turn handle clockwise until seated and water drains out of the drain hole or faucet may freeze and burst. Backflow Preventer replacement is recommended every 3-5 years.

### Rough-In Dimensions



Wall Thickness (inches)

4	6	8	10	12	14	16	18	20	22	24
2.2	2.3	2.4	2.5	2.6	2.7	2.9	3.1	3.3	3.5	3.7

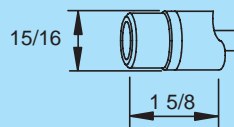
Shipping Wt. (lbs)

*Approx. Shipping Weight Each*

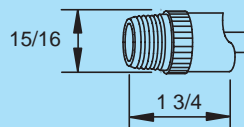
\*Overall Length Dimension: Add wall thickness and inlet option length shown in chart above.

**For instructions go to**  
[www.woodfordmfg.com](http://www.woodfordmfg.com) or call 1-800-621-6032

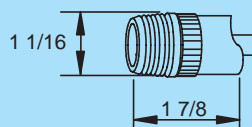
### Inlet Descriptions



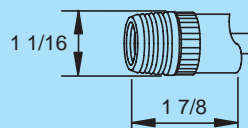
**C Inlet**  
**COMBINATION**  
 Copper Sweat Fitting  
 1/2" K, L or M Inside  
 3/4" M Only Outside



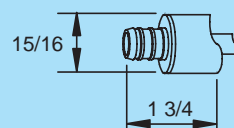
**CP Inlet**  
**COMBINATION**  
 1/2" Male Pipe Thread  
 1/2" Female Sweat



**CP3 Inlet**  
**COMBINATION**  
 3/4" Male Pipe Thread  
 3/4" Female Sweat



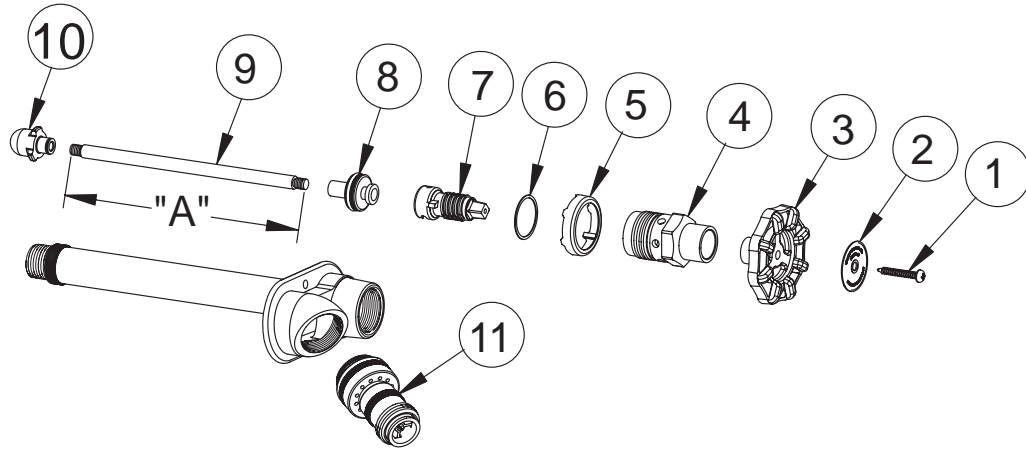
**P Inlet**  
**COMBINATION**  
 1/2" Female Pipe Thread  
 3/4" Male Pipe Thread



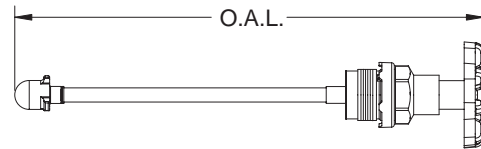
**PX Inlet**  
 1/2" PEX Tube Fitting

**PX3 INLET**  
 3/4" PEX Tube Fitting

**When ordering, specify model, inlet and wall thickness.**

**WOODFORD****MODEL 27 PARTS LIST**

ITEM	PART#	DESCRIPTION
1	30234	Handle Screw
2	30439	I.D. Ring - Model 27
3	30239	Wheel Handle - Metal
4	30241	Head Nut - Brass
5	30236	Drain Guard
6	30245	Head Nut Gasket
7	30238	Stem Screw
8	35280	Drain Valve Assembly
9	303XX	Operating Rod (See Chart)
10	30230	Plunger Assembly
11	50HA-BR	Backflow Preventer
	RK-25	Repair Kit (Includes items 1, 3-8 & 10)

**OPERATING ROD ASSEMBLY  
INCLUDES ITEMS 1 THRU 10**

Wall Thickness	Overall Length	Part No.
4	8"	35504
6	10"	35506
8	12"	35508
10	14"	35510
12	16"	35512
14	18"	35514
16	20"	35516
18	22"	35518
20	24"	35520
22	26"	35522
24	28"	35524

**OPERATING ROD DIM "A"**

Wall Thickness	Length	Part No.
4	4-7/16"	30304
6	6-7/16"	30306
8	8-7/16"	30308
10	10-7/16"	30310
12	12-7/16"	30312
14	14-7/16"	30314
16	16-7/16"	30316
18	18-7/16"	30318
20	20-7/16"	30320
22	22-7/16"	30322
24	24-7/16"	30324

**Woodford**  
*Excellence*  
 Since 1929  
 Proudly Made In The U.S.A.

Manufactured under one or more of the following U.S. Patents: 3,414,001; 4,178,956; 4,316,481; 4,532,954; D216,790; D216,791; D277,365; D277,366; Canada Patents: 852,529; 865,995; 1,146,438

*For more information contact...*

**WOODFORD MANUFACTURING COMPANY**

2121 Waynoka Road, Colorado Springs, Colorado 80915 • Phone: (800) 621-6032 • Fax: (800) 765-4115

To view our complete product line visit: [www.woodfordmfg.com](http://www.woodfordmfg.com) or email: [sales@woodfordmfg.com](mailto:sales@woodfordmfg.com)

A Division Of WCM Industries, Inc.